

MSCI Thematics

► Helping Active Managers to benefit from thematic investing

Thematic investing is a top-down investment approach which capitalizes on opportunities created by macroeconomic, geopolitical and technological trends that are structural and transformative in nature, rather than short-term shifts, spanning across four themes - Environment & Resources, Transformative technologies, Health & Healthcare, and Society & Lifestyle.

Active Managers gain a clearer view of thematic fund performance

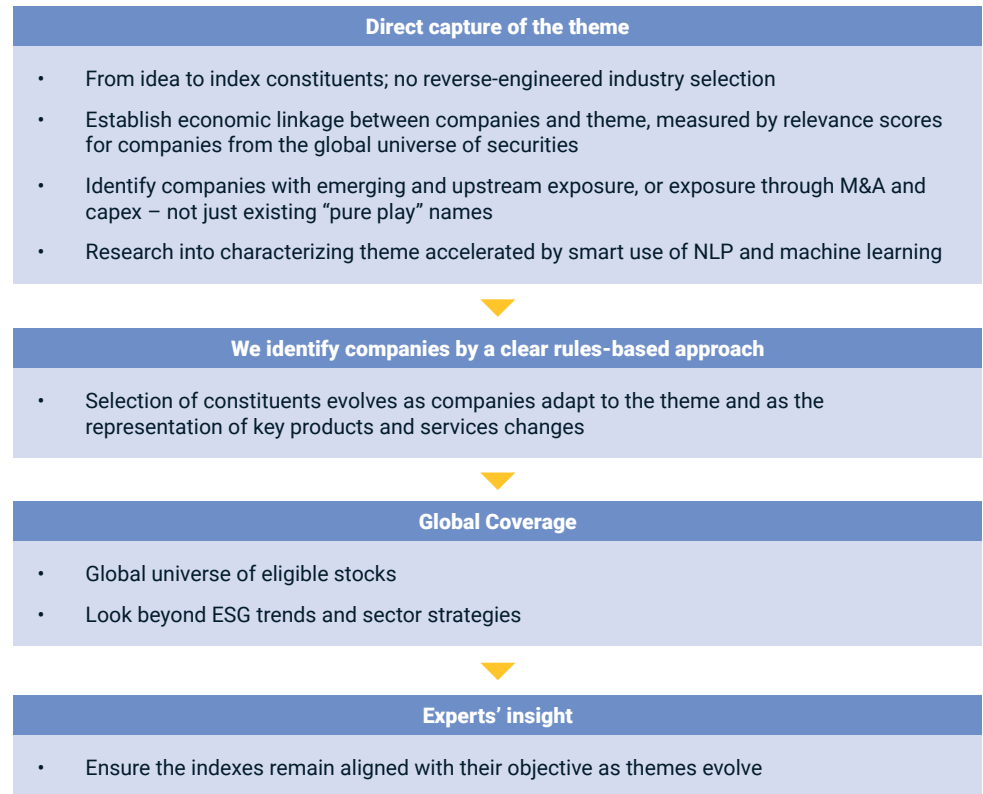
Active Managers with a strong thematic fund offering are now benchmarking their strategies against MSCI Thematic indexes or using our Thematic constituent universe.

How Active Managers can benefit from Thematics

Active Managers can benefit from specific advantages that our Thematic Indexes offer.

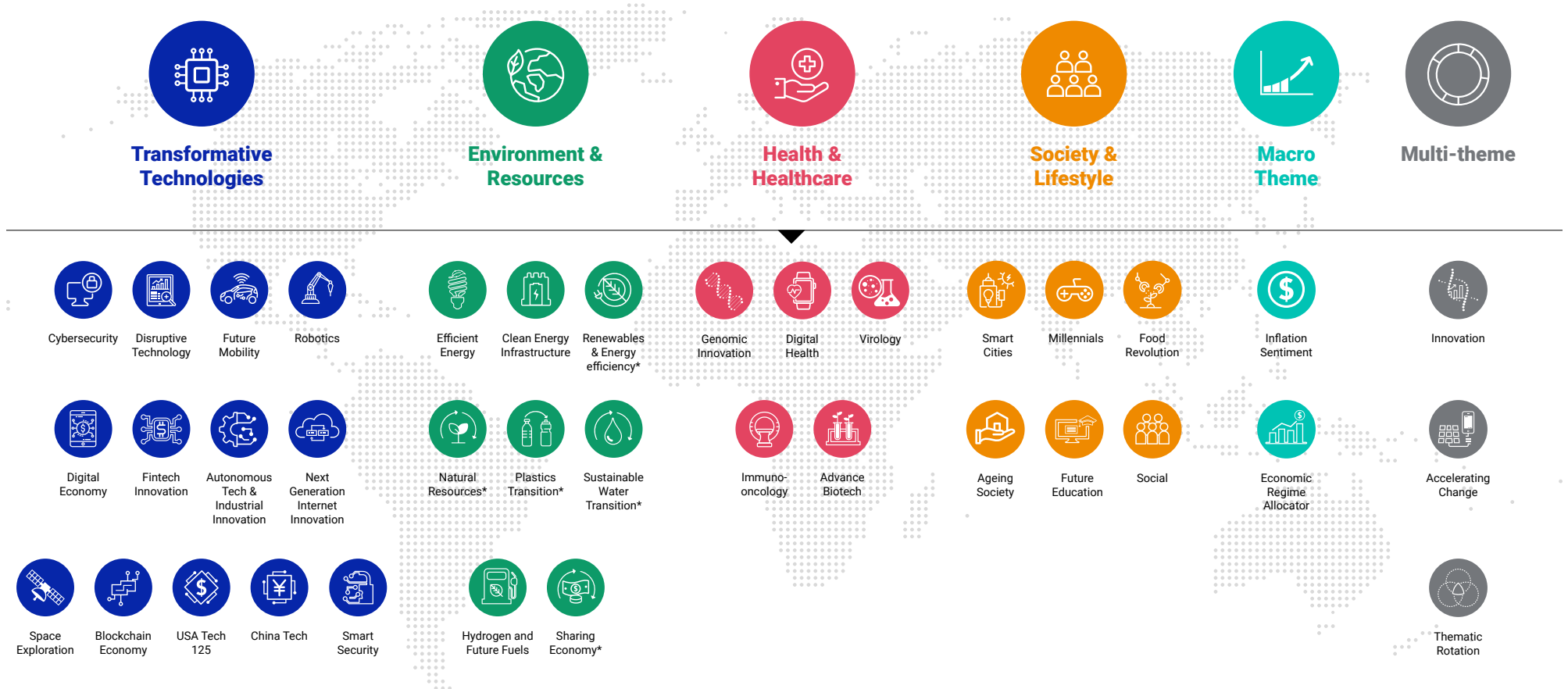
- 1 Use MSCI thematic indexes as a constituent universe for active strategies
- 2 Provide additional reporting on theme exposures, attribution and performance to end investors
- 3 Understand how your current portfolio is exposed to key long-term megatrends and themes
- 4 Manage and control these thematic exposures in a deliberate way

Active Managers can benefit from our approach to Thematic Index construction



MSCI's range of megatrend indexes

Thematic investing helps you to gain an appropriate exposure to such diverse themes as:



We give you a broader picture, helping you to explore the themes of the future. Our thematic offerings enhance other analytical tools and complement traditional country, industry and factor lenses when analysing and designing portfolios.

At MSCI we have a long history of anticipating emerging trends. Our rules-based methodology, in-depth insights from leading industry experts, and broad range of megatrend themes, help you understand the structural changes happening around us – and translate this knowledge into a better diversified long-term investment strategy.



Bring the future into view with MSCI Thematic Indexes

MSCI's Thematic Indexes are constructed by including companies that may be impacted by emerging technological, environmental, innovative healthcare and societal trends.

To explore more about our thematic offerings visit
www.msci.com/thematic-investing



About MSCI

MSCI is a leading provider of critical decision support tools and services for the global investment community. With over 50 years of expertise in research, data and technology, we power better investment decisions by enabling clients to understand and analyze key drivers of risk and return and confidently build more effective portfolios. We create industry-leading research-enhanced solutions that clients use to gain insight into and improve transparency across the investment process.

The process for submitting a formal index complaint can be found on the index regulation page of MSCI's website at: <https://www.msci.com/index-regulation>.

The information contained herein (the "Information") may not be reproduced or disseminated in whole or in part without prior written permission from MSCI. The Information may not be used to verify or correct other data, to create any derivative works, to create indexes, risk models, or analytics, or in connection with issuing, offering, sponsoring, managing or marketing any securities, portfolios, financial products or other investment vehicles. Historical data and analysis should not be taken as an indication or guarantee of any future performance, analysis, forecast or prediction. None of the Information or MSCI index or other product or service constitutes an offer to buy or sell, or a promotion or recommendation of, any security, financial instrument or product or trading strategy. Further, none of the Information or any MSCI index is intended to constitute investment advice or a recommendation to make (or refrain from making) any kind of investment decision and may not be relied on as such. MSCI ESG and climate ratings, research and data are produced by MSCI ESG Research LLC, a subsidiary of MSCI Inc. MSCI ESG Indexes, Analytics and Real Estate are products of MSCI Inc. that utilize information from MSCI ESG Research LLC. MSCI Indexes are administered by MSCI Limited (UK). The Information is provided "as is" and the user of the Information assumes the entire risk of any use it may make or permit

to be made of the Information. NONE OF MSCI INC. OR ANY OF ITS SUBSIDIARIES OR ITS OR THEIR DIRECT OR INDIRECT SUPPLIERS OR ANY THIRD PARTY INVOLVED IN MAKING OR COMPILING THE INFORMATION (EACH, AN "INFORMATION PROVIDER") MAKES ANY WARRANTIES OR REPRESENTATIONS AND, TO THE MAXIMUM EXTENT PERMITTED BY LAW, EACH INFORMATION PROVIDER HEREBY EXPRESSLY DISCLAIMS ALL IMPLIED WARRANTIES, INCLUDING WARRANTIES OF MERCHANTABILITY AND FITNESS FOR A PARTICULAR PURPOSE. WITHOUT LIMITING ANY OF THE FOREGOING AND TO THE MAXIMUM EXTENT PERMITTED BY LAW, IN NO EVENT SHALL ANY OF THE INFORMATION PROVIDERS HAVE ANY LIABILITY REGARDING ANY OF THE INFORMATION FOR ANY DIRECT, INDIRECT, SPECIAL, PUNITIVE, CONSEQUENTIAL (INCLUDING LOST PROFITS) OR ANY OTHER DAMAGES EVEN IF NOTIFIED OF THE POSSIBILITY OF SUCH DAMAGES. The foregoing shall not exclude or limit any liability that may not by applicable law be excluded or limited. Privacy notice: For information about how MSCI collects and uses personal data, please refer to our Privacy Notice at <https://www.msci.com/privacy-pledge>.