

MSCI ONE Navigation Guide

How to provide feedback and updates on your climate-related data

MSCI ONE, which includes our MSCI ESG Issuer Communications Portal (ICP), is a dedicated online portal designed for issuers in MSCI ESG Research coverage to:

- Gain insights into their ESG and Climate profile.
- Access their ESG Research assessments.
- Provide feedback on their Climate data at any time.

In this user guide we share how issuers can navigate MSCI ONE.

The screenshot displays the MSCI ONE user interface. On the left is a navigation menu with categories like Insights, Design, Operate, and Reports. The main content area features a 'What's New' section with two cards: 'For Companies: View your ESG and climate profile' and 'Understand portfolio risk with MSCI Insights'. To the right is a 'Recent Actions' list. Below this is a table titled 'MSCI Real-Time Index Data' showing performance metrics for various indices.

Global	Asia Pacific	EMEA	Americas	Factor		
MSCI Index Performance						
Index	Currency	Last Price	Change	%	YTD%	As of
ACWI	USD	632.80	▼ 0.81	▼ 0.14	▲ 4.50	23:19 *
ACWI ex, USA	USD	302.36	▼ 1.06	▼ 0.36	▲ 7.56	23:19 *
ACWI, IM	USD	1608.13	▼ 2.40	▼ 0.15	▲ 4.65	23:19 *
World	USD	2709.96	▼ 3.58	▼ 0.13	▲ 4.12	23:19 *
EAFE	USD	2090.56	▼ 7.65	▼ 0.36	▲ 7.85	23:19 *
Emerging Markets, (EM)	USD	1030.06	▲ 2.68	▲ 0.26	▲ 7.70	Jan 18
World, ESG	USD	165.96	▼ 0.22	▼ 0.13	▲ 4.23	23:19 *
Frontier Markets, (FM)	USD	496.30	▲ 3.21	▲ 0.65	▲ 4.84	Jan 18

Performance data will be automatically refreshed every minute.
Click index name for end of day data. Terms Use Restrictions * GMT | 30 minute delay

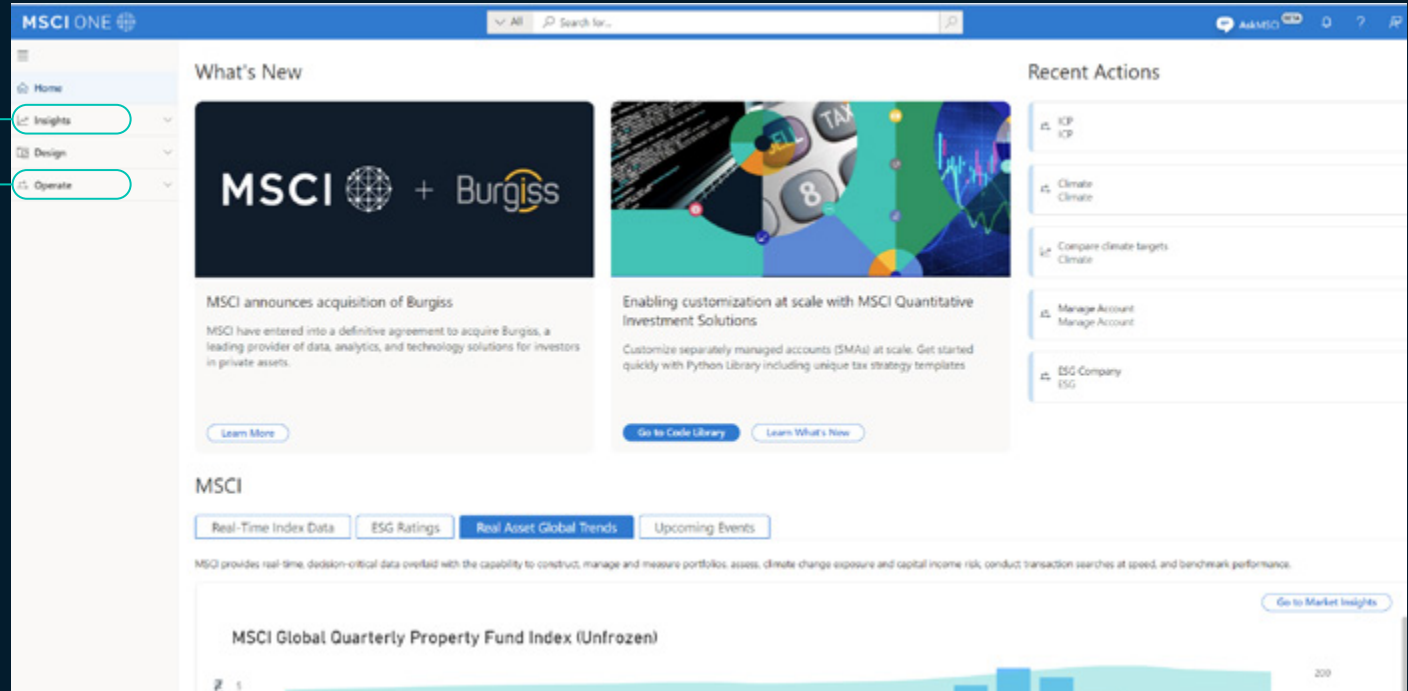
SUBSCRIBE
Subscribe to MSCI Real Time Indexes for only \$40 per terminal, per month.
• If you are a FactSet, ICE, Refinitiv or Six Financial please contact your local account manager or helpdesk and ask to subscribe to MSCI Real Time Indexes.
• If you are a Bloomberg client, please contact MSCI Global Client Services to obtain the required license agreement.

Discover How MSCI Powers Better Investment Decisions
[Learn More](#)

Latest from MSCI Research

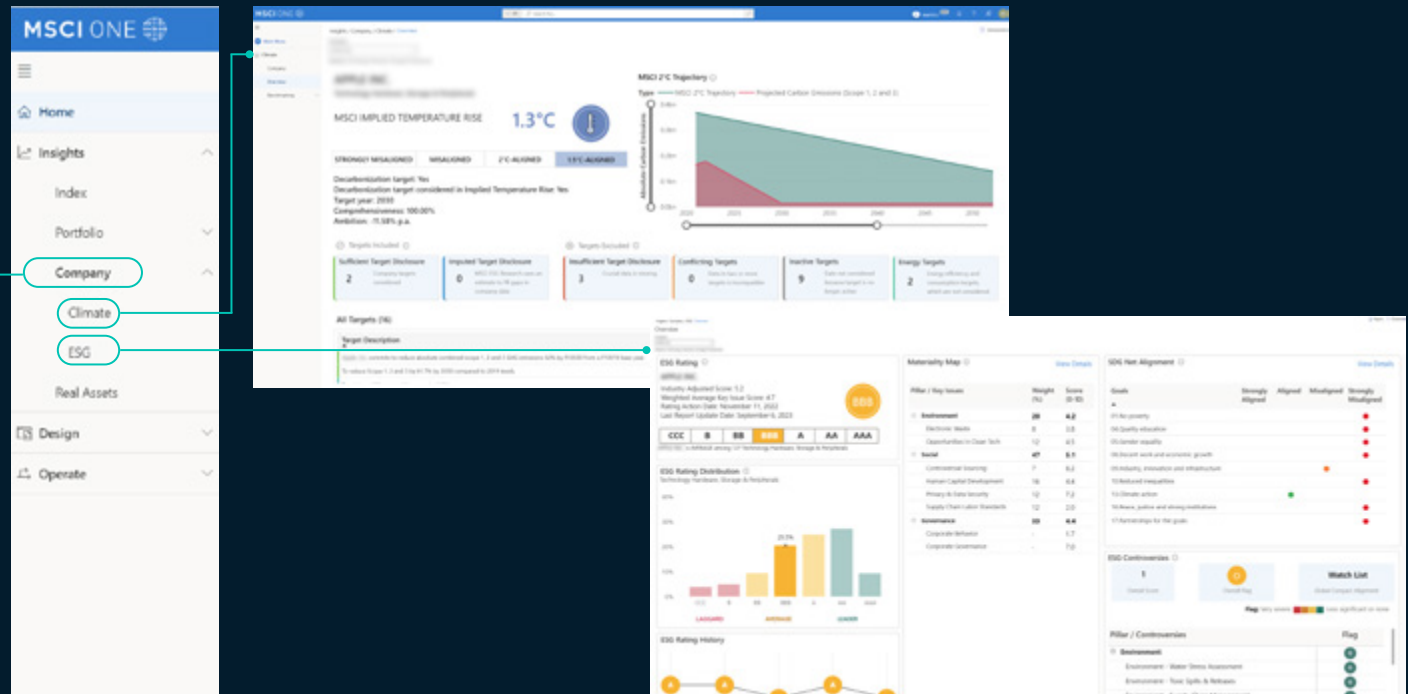
- India Equity Futures for the World**
India is the world's fifth largest economy and one of the fastest-growing major markets. We believe that futures linked to the MSCI India Index could help capture a deeper opportunity set and manage Indian equity exposures.
- No Country for Old Firms? Revisiting Growth and Thematic Investing**
Investors that were previously enthralled with growth at any price have since reevaluated. With this in mind, we focus on spotting key differences between growth and thematic investing, and highlight how the two can complement each another.
- Understanding MSCI's Climate Metrics**
With no "one fits all" solution, to help investors identify the most suitable climate metrics, we take an in-depth look at MSCI ESG Research's climate metrics in terms of what they measure, how they are calculated and their potential use cases.
- Parallel Benchmarking for Climate Alignment**
Broad market cap weighted indexes might not fully assess climate-objective alignment. We believe that an appropriate parallel benchmark could help illustrate this alignment, improve transparency and allow investors to make more informed decisions.
- Markets in Focus: Investors Look to Capture Big Market Shifts**
Global equities and bonds declined in 2022 against a surge in inflation, waning economic growth and monetary tightening. We highlight how factor indexes, country allocation and thematic investing can help investors capture opportunities with greater precision.
- Growth Investing in Private Markets: Trends and Transparency**
Are quoted returns of private-equity investment comparable to those in public equity markets? To analyze this quandary, we use transaction and order-book data for timely insights into venture capital trends and relate them to public markets.

Issuers should be primarily familiar with the **Insights** and **Operate** dropdowns on the lefthand side of the screen.



Insights will direct you to Climate and ESG Overviews. Navigate to **Insights > Company**.

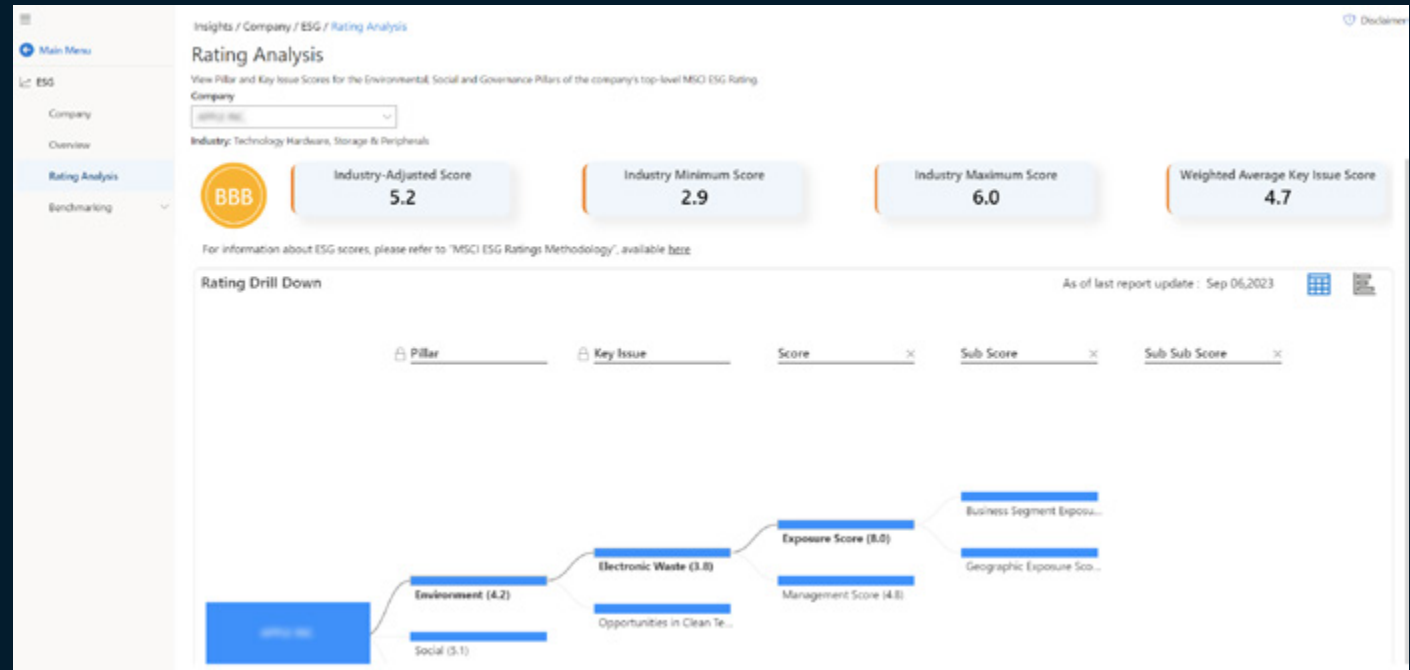
- ▶ **Climate** Overview for target data including ITR
- ▶ **ESG** Overview for ESG Rating, SDG Alignment, Controversies and more



Navigate to **Insights > Company > ESG > Rating Analysis** to view:

- Rating Drill Down
- Industry-Adjusted Score
- Industry Minimum and Maximum Scores
- Weighted Average Key Issue Score

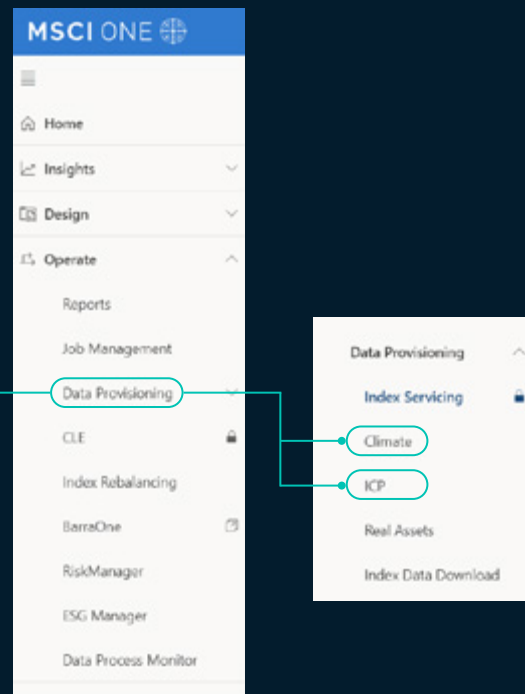
This detail is also available in your ESG Ratings Report, accessible via **Operate > Reports**



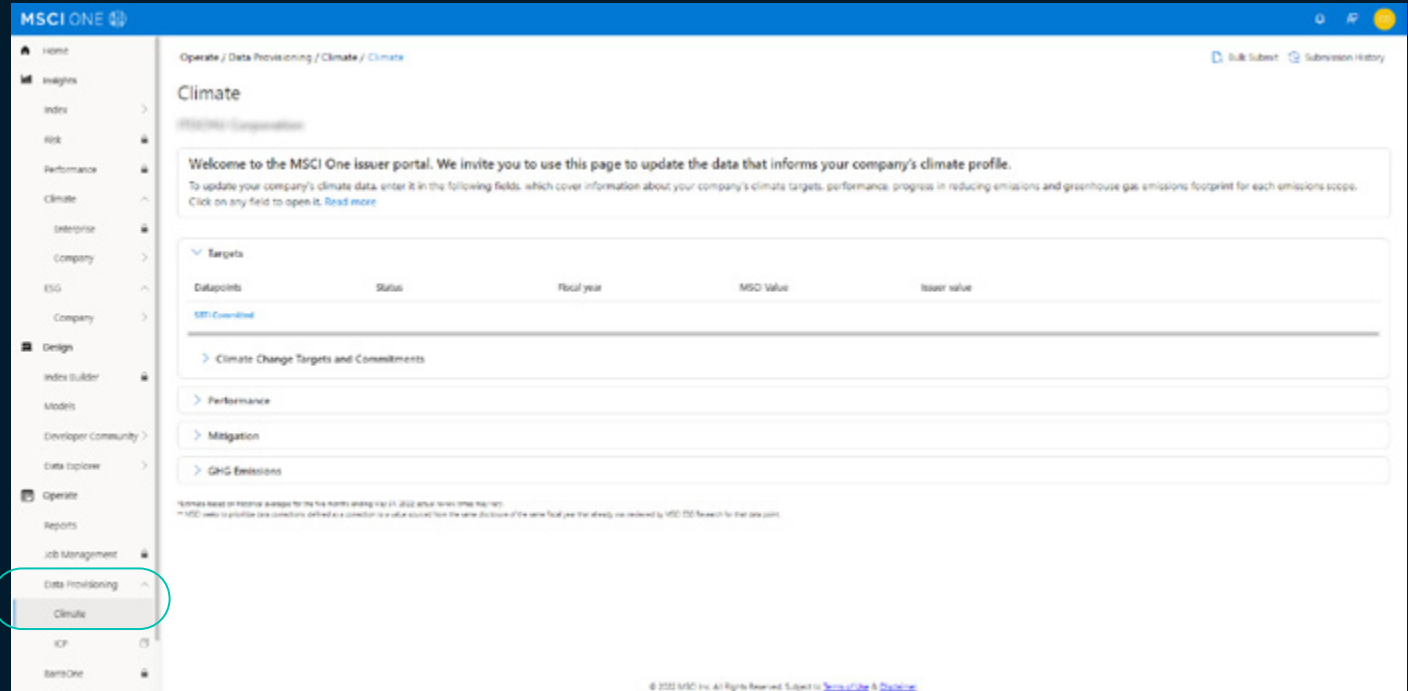
Operate also contains **Data Provisioning**, where you can provide feedback for MSCI ESG Research analyst review.

Navigate to **Operate > Data Provisioning**

- ▶ **Climate** for climate-related data
- ▶ **ICP** for all other data categories



Index Servicing and Real Assets are for subscribers only. If you are interested in exploring these solutions, please email Corporate Sales @msci.com.



Provide data feedback in the **Climate tab** under **Data Provisioning**.

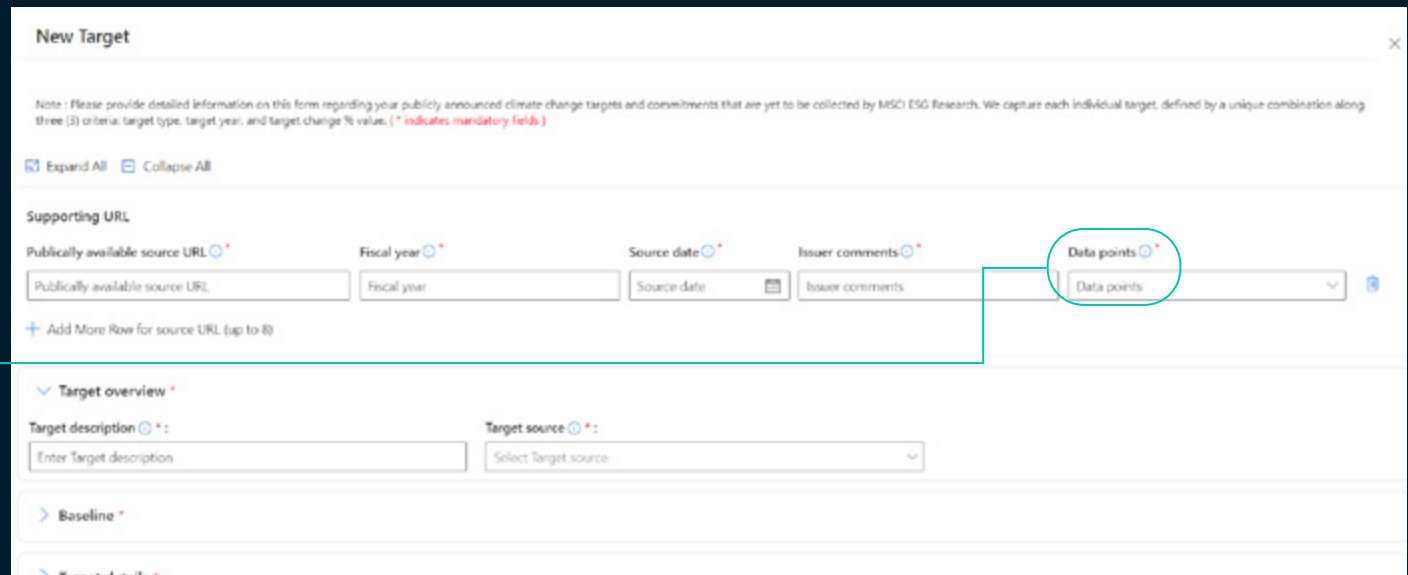
Clicking on any data point shows existing information.

To provide feedback on an existing record:

- Select editable fields (in blue)
- Click on “Provide Feedback” (pencil icon)
- “Reset to default” if appropriate

To add a record (any new information):

1. Click the “New Record” button
2. Add all relevant information and the supporting URL
3. Scroll up to the “Data points” section. “Select All” for each URL.



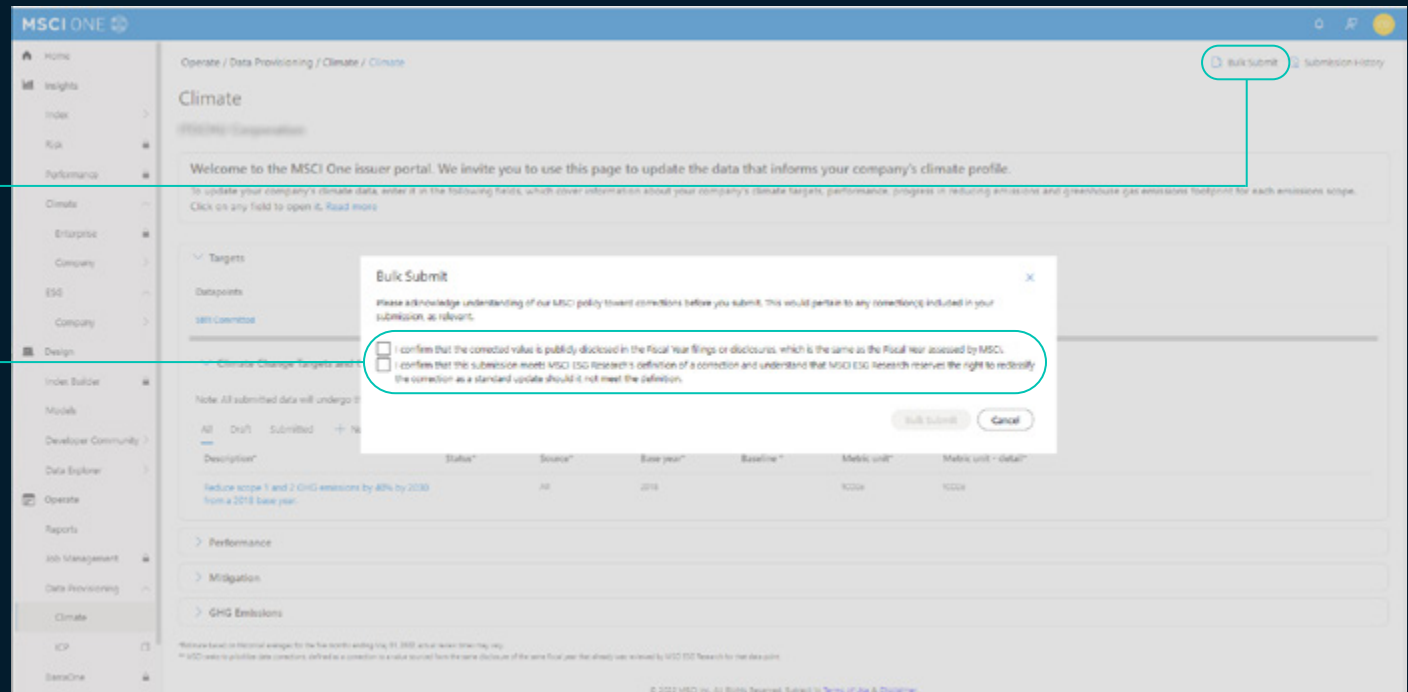
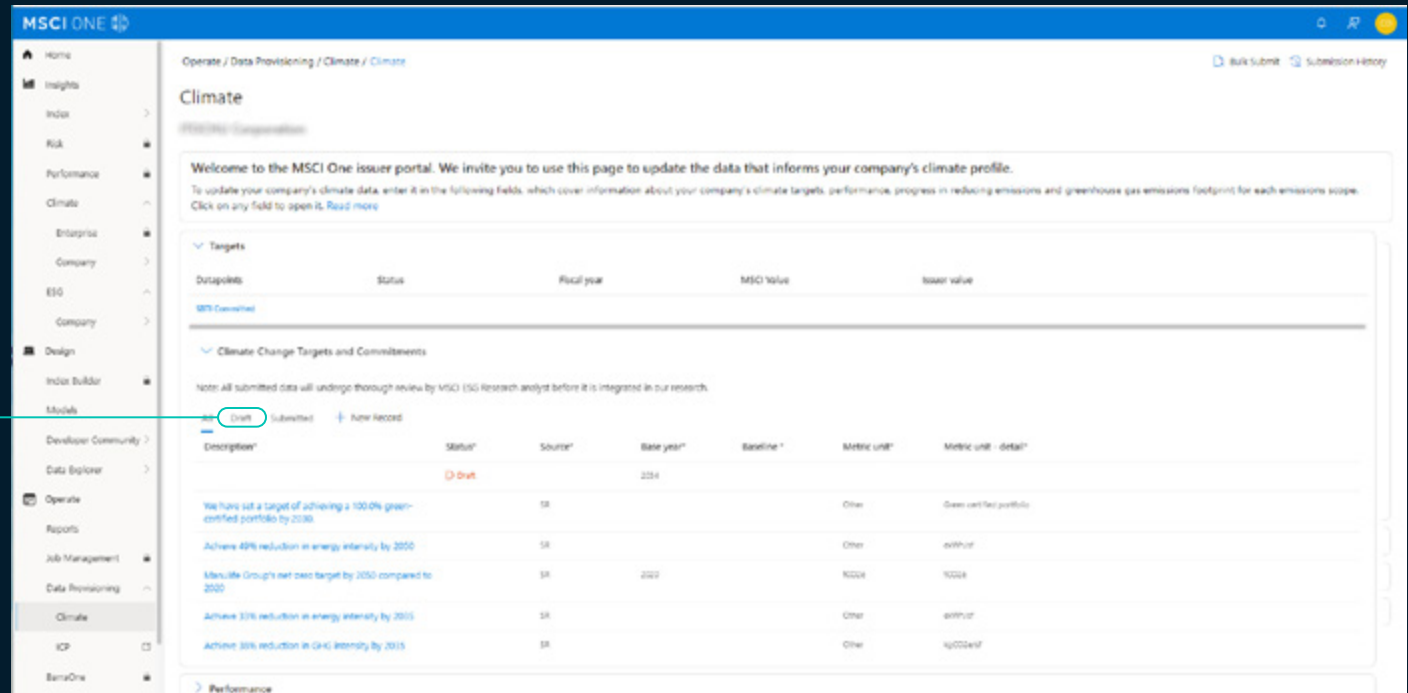


To modify an existing record, find the **editable fields** by identifying the **blue text**. Click on **“Provide feedback”** (pencil icon) and edit as appropriate.

Make and save all of your updates before submitting. You’ll see all saved updates under the relevant accordion. At this point, you also have the option to invite colleagues to review the data. Upon login, they’ll see the same “draft” information.

When you’re ready to submit all your saved drafts to MSCI ESG Research for review, click **“bulk submit”** in the top right corner.

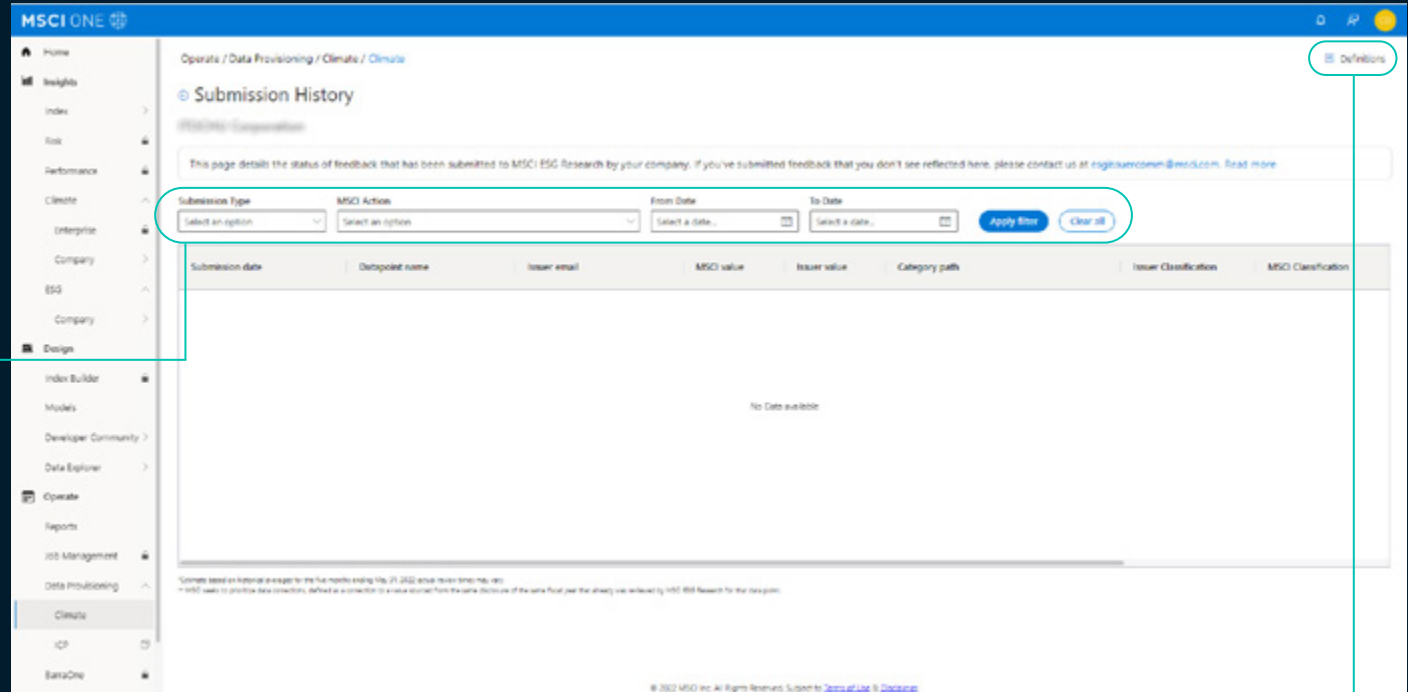
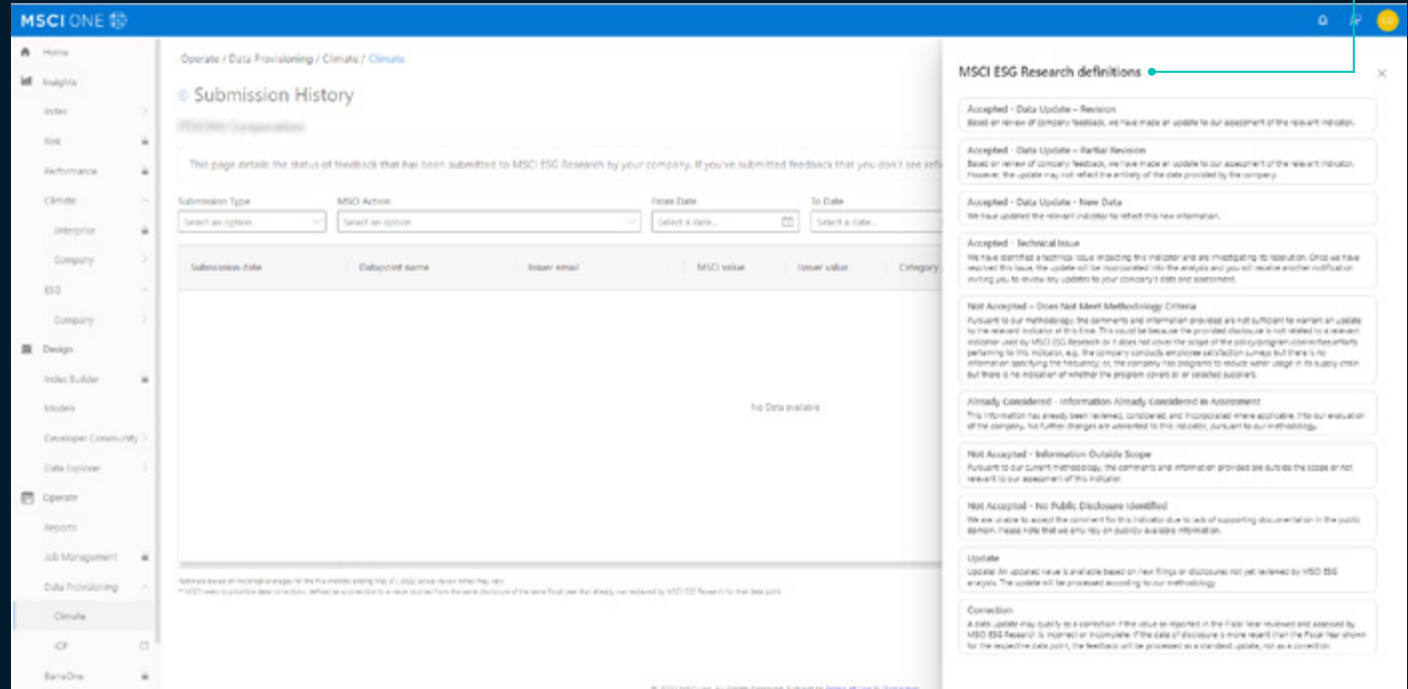
You will be prompted to acknowledge that you understand the MSCI ESG Research Corrections Policy. Agreement of this policy is required to proceed.



Submission History is a new feature that shows you the status of all your data submissions in one place. You can filter by submission type, MSCI action, and dates.

Click **“definitions”** in the top right corner to see how MSCI ESG Research reviews and evaluates data feedback.

For more information on our methodology and process, visit <https://www.msci.com/esg-and-climate-methodologies>.

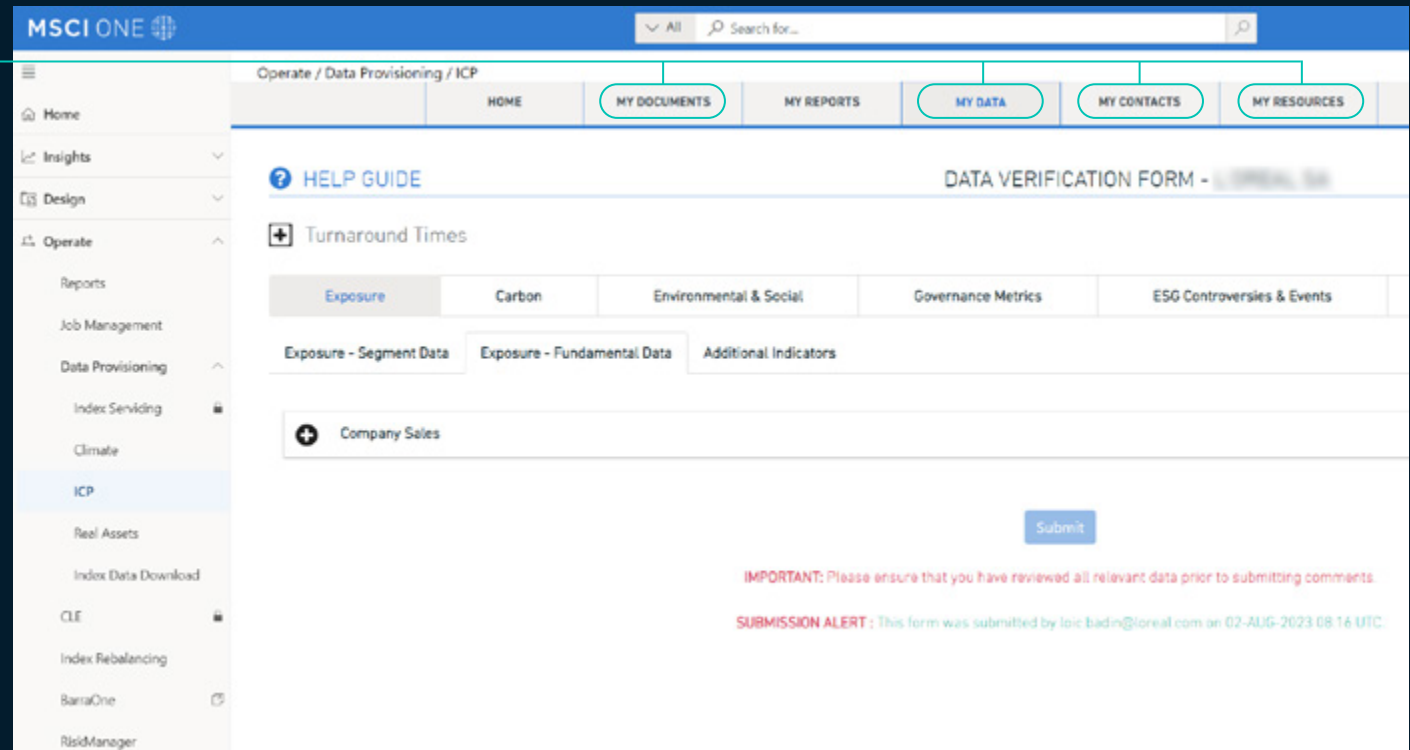


Through MSCI One issuers can also access our legacy Issuer Communications Portal to provide data feedback on all data categories excluding climate and to access educational resources.

Navigate to **Operate > Data**

Provisioning > ICP

- ▶ **MY DATA** to provide non-climate data feedback
- ▶ **MY DOCUMENTS** to upload publicly available company disclosures
- ▶ **MY CONTACTS** to update company contacts*
- ▶ **MY RESOURCES** to access educational materials



*Please note, adding company contacts via **MY CONTACTS** on the ICP requires you to follow the Account Creation Steps outlined in our "Getting Started with MSCI ONE and the ESG Issuer Communications Portal" Guide under MY RESOURCES.

If you have any questions or feedback, contact ESG Issuer Communications: esgissuercomm@msci.com.



About MSCI Inc.

MSCI is a leading provider of critical decision support tools and services for the global investment community. With over 50 years of expertise in research, data and technology, we power better investment decisions by enabling clients to understand and analyze key drivers of risk and return and confidently build more effective portfolios. We create industry-leading research-enhanced solutions that clients use to gain insight into and improve transparency across the investment process.

To learn more, please visit www.msci.com.

About MSCI ESG Research Products and Services

MSCI ESG Research products and services are provided by MSCI ESG Research LLC, and are designed to provide in-depth research, ratings and analysis of environmental, social and governance-related business practices to companies worldwide. ESG ratings, data and analysis from MSCI ESG Research LLC. are also used in the construction of the MSCI ESG Indexes. MSCI ESG Research LLC. is a Registered Investment Adviser under the Investment Advisers Act of 1940 and a subsidiary of MSCI Inc.

The information contained herein (the "Information") may not be reproduced or disseminated in whole or in part without prior written permission from MSCI. The Information may not be used to verify or correct other data, to create indexes, risk models, or analytics, or in connection with issuing, offering, sponsoring, managing or marketing any securities, portfolios, financial products or other investment vehicles. Historical data and analysis should not be taken as an indication or guarantee of any future performance, analysis, forecast or prediction. None of the Information or MSCI Index or other product or service constitutes an offer to buy or sell, or a promotion or recommendation of, any security, financial instrument or product or trading strategy. Further, none of the Information or any MSCI Index is intended to constitute investment advice or a recommendation to make (or refrain from making) any kind of investment decision and may not be relied on as such. The Information is provided "as is" and the user of the Information assumes the entire risk of any use it may make or permit to be made of the Information. NONE OF MSCI INC. OR ANY OF ITS SUBSIDIARIES OR ITS OR THEIR DIRECT OR INDIRECT SUPPLIERS OR ANY THIRD PARTY INVOLVED IN THE MAKING OR COMPILING OF THE INFORMATION (EACH, AN "MSCI PARTY") MAKES ANY WARRANTIES OR REPRESENTATIONS AND, TO THE MAXIMUM EXTENT PERMITTED BY LAW, EACH MSCI PARTY HEREBY EXPRESSLY DISCLAIMS ALL IMPLIED WARRANTIES, INCLUDING WARRANTIES OF MERCHANTABILITY AND FITNESS FOR A PARTICULAR PURPOSE. WITHOUT LIMITING ANY OF THE FOREGOING AND TO THE MAXIMUM EXTENT PERMITTED BY LAW, IN NO EVENT SHALL ANY OF THE MSCI PARTIES HAVE ANY LIABILITY REGARDING ANY OF THE INFORMATION FOR ANY DIRECT, INDIRECT, SPECIAL, PUNITIVE, CONSEQUENTIAL (INCLUDING LOST PROFITS) OR ANY OTHER DAMAGES EVEN IF NOTIFIED OF THE POSSIBILITY OF SUCH DAMAGES. The foregoing shall not exclude or limit any liability that may not by applicable law be excluded or limited.