

MSCI Hedge Invest IndexSM Performance Summary – December 2006

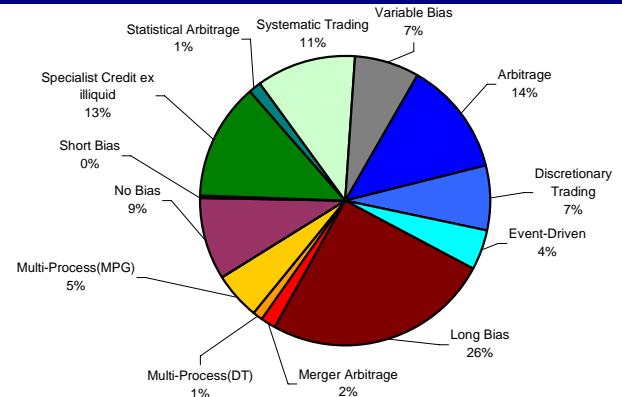
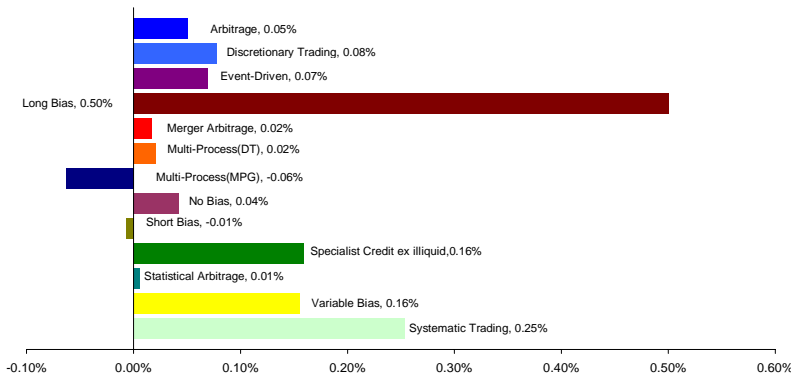
New York - January 3, 2007 - The MSCI Hedge Invest Index is designed to be both investable and take into account the overall structure and composition of the hedge fund universe. It uses the non-investable MSCI Hedge Fund Indices and Database as a reference framework for the characteristics of the overall hedge fund universe.

	Dec-06	Fund Count	Index Level	Inception Date	YTD Return	52 Weeks Return	ITD Return	Sharpe Ratio*
MSCI Hedge Invest Index	1.28%	143	12,105	15-Jul-2003	7.33%	7.33%	21.05%	0.53

*Risk Free Rate = 30 days LIBOR Annualized over 3 yrs

December Contribution

Investment Segments Weights

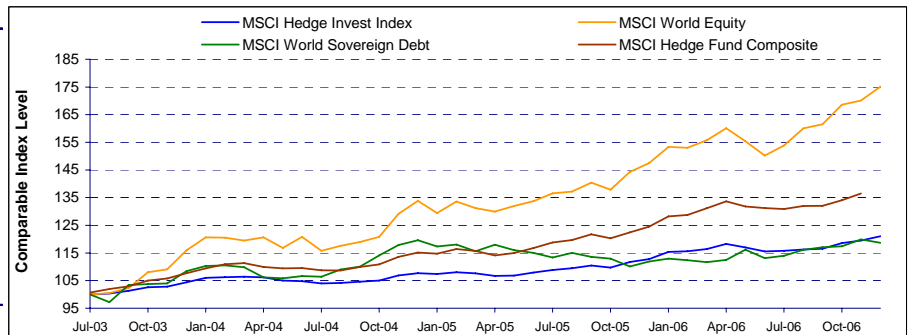


For the month of December, the MSCI Hedge Invest Index gained 1.28%, bringing the return since inception to 21.05%. The largest positive contribution came from Long Bias funds adding 50 basis points, while the largest negative contribution came from Multi-Process funds with a decline of 6 basis points.

Monthly Performance

Comparative Performance

	2003	2004	2005	2006
Jan		1.55%	-0.32%	2.29%
Feb		0.25%	0.60%	0.24%
Mar		0.15%	-0.38%	0.72%
Apr		-0.23%	-0.79%	1.57%
May		-1.09%	0.04%	-1.08%
Jun		-0.24%	1.04%	-1.27%
Jul	-0.03%	-0.71%	0.86%	0.22%
Aug	0.37%	0.11%	0.56%	0.43%
Sep	0.96%	0.49%	0.90%	0.18%
Oct	1.26%	0.40%	-0.62%	1.78%
Nov	0.22%	1.79%	1.85%	0.81%
Dec	1.49%	0.74%	0.91%	1.28%
Total	4.35%	3.23%	4.70%	7.33%

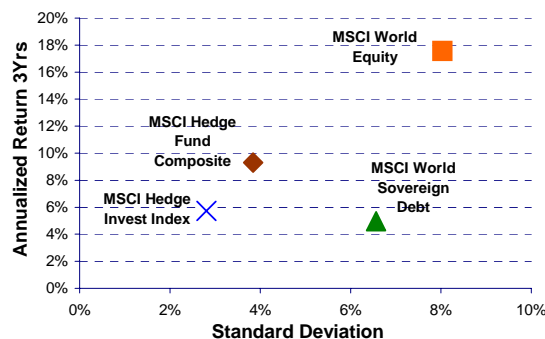


Key Statistics

Risk/Return Analysis

Index Correlations

Cumulative Return	21.0%
Annualized RoR	5.61%
Annualized Standard Deviation	2.91%
Average Monthly Return	0.45%
Median Monthly Return	0.40%
Average Positive Month	0.84%
% of Positive Months	73.81%
Average Negative Month	-0.61%
Peak to Valley	-2.33%
Drawdown Period	May-June06
Time to recovery	4 months
12 Month Rolling Return Avg.	4.99%
Rolling Return 12 Month Min.	0.57%
Rolling Return 12 Month Max.	10.81%



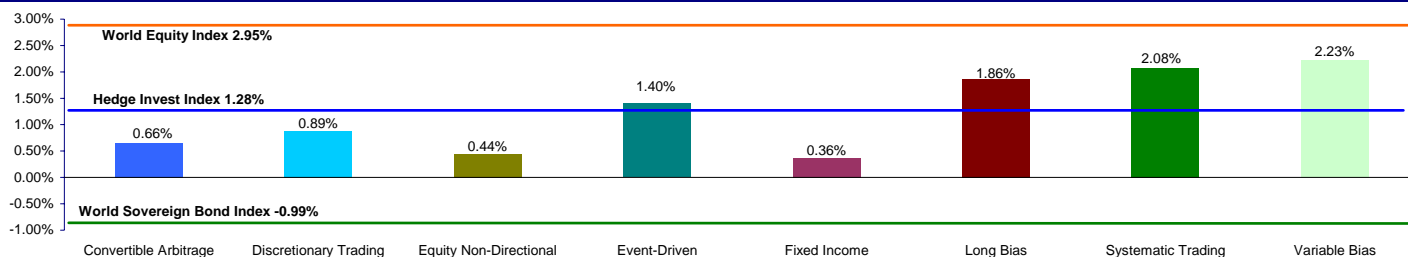
	Hedge Invest Index	Hedge Fund Composite	World Equity
Hedge Fund Composite	97.30%		
World Equity	84.61%	86.70%	
World Sovereign	22.45%	27.40%	31.17%

Hedge Invest Index data is tabulated using data from the last Tuesday of each period due to weekly pricing. Data as of December 26, 2006 other than hedge fund composite index (a non-investable index) data as of November 30, 2006 * Hedge Invest Index data begins July 15th, 2003. The MSCI Hedge Invest Indices are constructed according to the MSCI Investable Hedge Fund Index Methodology.

MSCI Hedge Invest Strategy Indices Performance Summary – December 2006

	Dec-06	Index Level	Fund Count	Inception Date	YTD Return	52 Weeks Return	ITD Return	Std. Dev. 12M Rolling
Convertible Arbitrage Index	0.66%	10,655	13	15-Jul-2003	8.30%	8.30%	6.55%	1.66%
Discretionary Trading Index	0.89%	10,963	12	6-Jan-2004	4.49%	4.49%	9.63%	0.48%
Equity Non-Directional Index	0.44%	11,454	11	15-Jul-2003	4.47%	4.47%	14.54%	1.30%
Event Driven Index	1.40%	11,687	14	15-Jul-2003	9.08%	9.08%	16.87%	2.13%
Fixed Income Index	0.36%	10,983	17	4-Jan-2005	5.88%	5.88%	9.83%	0.99%
Long Bias Index	1.86%	13,923	22	15-Jul-2003	11.09%	11.09%	39.23%	0.83%
Systematic Trading Index	2.08%	11,687	26	15-Jul-2003	5.20%	5.20%	16.87%	1.19%
Variable Bias Index	2.23%	12,506	16	6-Jul-2004	9.07%	9.07%	25.06%	1.61%

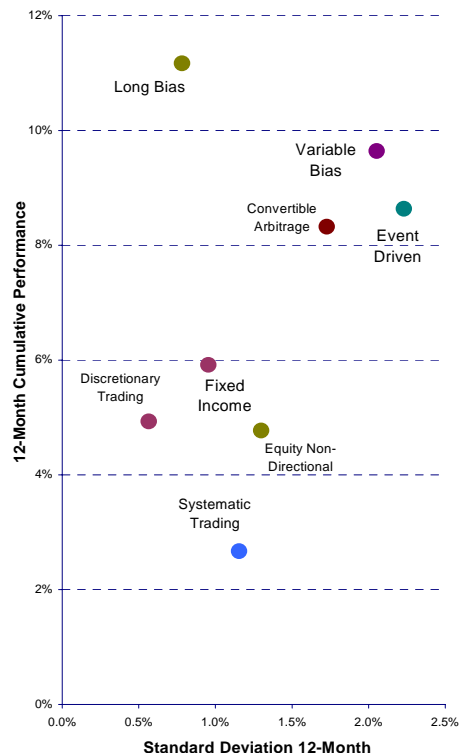
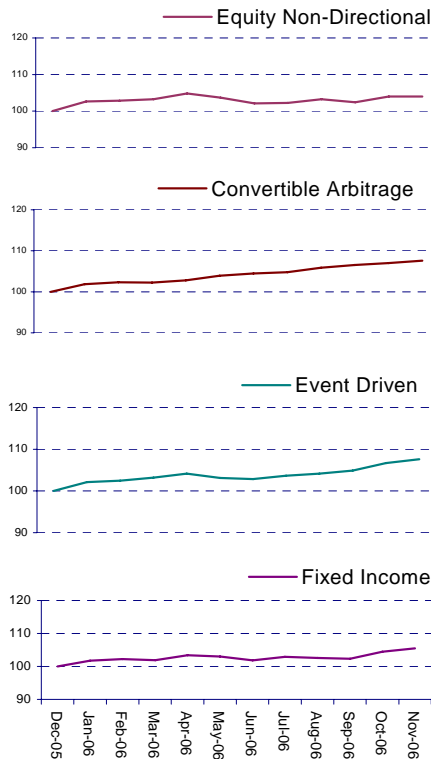
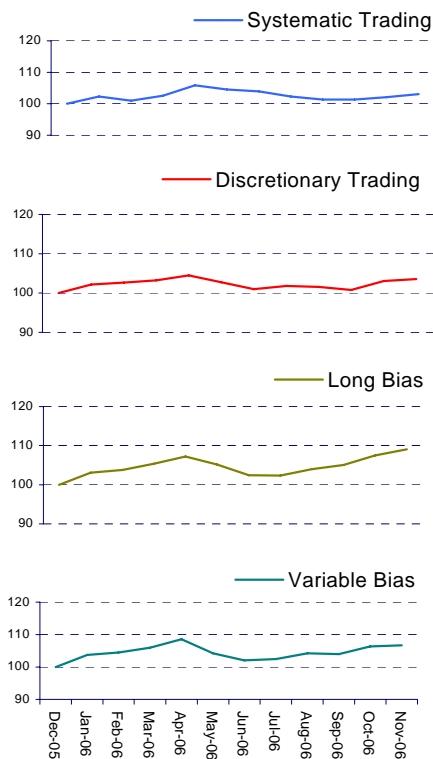
Comparative Monthly Performance by Strategy Indices



For the month of December, the MSCI Hedge Invest Variable Bias IndexSM was the best strategy-level performer, gaining 2.23%, bringing the return since inception to 25.06%. The worst performer for the month was the MSCI Hedge Invest Fixed Income IndexSM, which had a return of 0.36%.

12-Month Cumulative Performance by Strategy Index

Risk/Return Analysis



Hedge Invest Index data is tabulated using data from the last Tuesday of each period due to weekly pricing. Data as of December 26, 2006 other than hedge fund composite index (a non-investable index) data as of November 30, 2006 * Hedge Invest Index data begins July 15th, 2003. The MSCI Hedge Invest Indices are constructed according to the MSCI Investable Hedge Fund Index Methodology.

###

About MSCI Barra

MSCI Barra develops and maintains equity, fixed income, multi-asset class, REIT and hedge fund indices that serve as benchmarks for an estimated USD 3 trillion on a worldwide basis. MSCI Barra's risk models and analytics products help the world's largest investors analyze, measure and manage portfolio and firm-wide investment risk. MSCI Barra is headquartered in New York, with research and commercial offices around the world. Morgan Stanley, a global financial services firm and a market leader in securities, asset management, and credit services, is the majority shareholder of MSCI Barra, and Capital Group International, Inc. is the minority shareholder.

For further information on MSCI Barra, please visit our web site at www.msicbarra.com

For media enquiries please contact:

Ben Curson Clare Rowsell, Penrose Financial, London	+ 44.20.7786.4888
Ann Taylor Reed Mary Beth Grover, Abernathy MacGregor, New York	+ 1.212.371.5999

MSCI Barra Global Client Service:

Cecile Distel, MSCI Barra, New York	+ 1.212.762.5790
Aatish Suchak, MSCI Barra, London	+ 44.20.7618.2222
Susanna Wu, MSCI Barra, Hong Kong	+ 852.2848.6740
Pavithra Ramasubban, MSCI Barra, Sydney	+ 61.2.9220.9333
Masao Ikeda, MSCI Barra, Tokyo	+ 813.5424.5470

The information contained in this document, including all text, data, graphs, charts and all other information (collectively, the "Information") is the property of Morgan Stanley Capital International Inc. (MSCI) and is provided for informational purposes only. Any use of MSCI indices, data or other information requires a license from MSCI. The Information may not be used to verify or correct other data, to create indices, or in connection with offering, sponsoring, managing or marketing any securities, portfolios, financial instruments or products. None of the Information constitutes an offer to buy or sell, or a promotion or recommendation of, any security, financial instrument or product or trading strategy, and MSCI does not endorse, approve or otherwise express any opinion regarding any issuer, securities, financial instruments or products or trading strategies that may be described or mentioned herein. Further, none of the Information is intended to constitute investment advice or a recommendation to make (or refrain from making) any kind of investment decision and may not be relied on as such.

The user of the Information assumes the entire risk of any use it may make or permit to be made of it. NEITHER MSCI, ANY OF ITS AFFILIATES OR ANY OTHER THIRD PARTY INVOLVED IN MAKING OR COMPILING ANY OF THE INFORMATION MAKES ANY EXPRESS OR IMPLIED WARRANTIES OR REPRESENTATIONS WITH RESPECT TO THE INFORMATION (OR THE RESULTS TO BE OBTAINED BY THE USE THEREOF), AND MSCI, ITS AFFILIATES AND EACH SUCH OTHER THIRD PARTY HEREBY EXPRESSLY DISCLAIM ALL IMPLIED WARRANTIES (INCLUDING, WITHOUT LIMITATION, ANY IMPLIED WARRANTIES OF ORIGINALITY, ACCURACY, TIMELINESS, NON-INFRINGEMENT, COMPLETENESS, MERCHANTABILITY AND FITNESS FOR A PARTICULAR PURPOSE) WITH RESPECT TO ANY OF THE INFORMATION. Without limiting any of the foregoing, in no event shall MSCI, any of its affiliates or any other third party involved in making or compiling any of the Information have any liability regarding any of the Information for any direct, indirect, special, punitive, consequential or any other damages (including lost profits) even if notified of the possibility of such damages.

Morgan Stanley Capital International, MSCI®, ACWI, EAFE®, Barra®, MSCI Barra and all other service marks referred to herein are the exclusive property of MSCI or its affiliates, except as provided below. All MSCI indices are the exclusive property of MSCI and may not be used in any way without the express written permission of MSCI. The Global Industry Classification Standard (GICS) was developed by and is the exclusive property of MSCI and Standard & Poor's. "Global Industry Classification Standard (GICS)" is a service mark of MSCI and Standard & Poor's.