

# **MSCI TOTAL SHAREHOLDER YIELD INDEXES METHODOLOGY**

**April 2015**

**CONTENTS**

- 1 Introduction ..... 3
- 2 Index Construction Methodology ..... 4
  - 2.1 Defining the Eligible Universe ..... 4
  - 2.2 Determination of Total Shareholder Yield Score ..... 4
    - 2.2.1 Winsorizing Buyback Yield, Dividend Yield and Debt Reduction Yield .....4
    - 2.2.2 Calculating the Z-Scores.....5
    - 2.2.3 Calculating the Total Shareholder Yield Score .....5
  - 2.3 Security Inclusion ..... 6
  - 2.4 Weighting Scheme ..... 6
- 3 Maintaining MSCI Total Shareholder Yield Indexes ..... 7
  - 3.1 Annual Index Reviews ..... 7
    - 3.1.1 Buffer Rules:.....7
  - 3.2 Ongoing Event Related changes..... 7
    - 3.2.1 IPOs and other early inclusions.....7
    - 3.2.2 Additions and Deletions due to corporate events.....7
- Appendix I: Calculation of Fundamental Variables ..... 9
- Appendix II: Rules to Determine Fixed Number of Securities at Initial Construction and in Ongoing Rebalancing ..... 10
- Appendix III: Corporate Events Treatment..... 12

## 1 INTRODUCTION

The MSCI Total Shareholder Yield Indexes aim to reflect performance of companies that return cash to shareholders either through buybacks or by paying dividends. These Indexes target companies that have returned capital directly to the equity shareholders (as opposed to the debt holders) and seek to minimize their exposure to the companies that have raised debt levels to support inter alia these capital repayments.

MSCI categorizes the MSCI Total Shareholder Yield Indexes as Factor Indexes (Risk Premia), which reflect the systematic elements of particular investment styles or strategies. While capitalization weighted indexes represent the broad market beta, investors increasingly recognize that there are additional sources of systematic return associated with particular investment styles and strategies, such as value, momentum, volatility, etc., that could be represented through alternatively weighted indexes.

## 2 INDEX CONSTRUCTION METHODOLOGY

### 2.1 DEFINING THE ELIGIBLE UNIVERSE

The applicable universe includes all the existing constituents of an underlying MSCI Parent Index (herein, a “Parent Index”). MSCI Total Shareholder Yield Indexes also employ the following screens to define the eligible universe with an aim to achieve a better representation of Total Shareholder Yield opportunity set.

- Securities from the Parent Index that have Dividend Yield greater than zero or Buyback Yield greater than 10 bps are included to form the eligible universe. A buyback yield cutoff of 10 bps is used in order to avoid companies buying shares to offset other sources of issuance, for e.g. Employee Stock Options Program.
- Real Estate Investment Trusts (REITs) are excluded. REITs have structurally very high dividend yield and, if included, would represent a disproportionate share of the MSCI Total Shareholder Yield Index. Also, typically, regulatory constraints restrict the inclusion of REITs in meaningful proportions in many institutional portfolios.
- Securities with negative Enterprise Value are excluded.

### 2.2 DETERMINATION OF TOTAL SHAREHOLDER YIELD SCORE

The Total Shareholder Yield Score is determined for each security in the eligible universe. The Total Shareholder Yield score for each security is calculated by combining Z scores of two fundamental variables, namely the Total Yield (Dividend Yield + Buyback Yield) and the Debt Reduction Yield. Please refer to Appendix I for further details on the calculation of the underlying fundamental variables.

#### 2.2.1 WINSORIZING BUYBACK YIELD, DIVIDEND YIELD AND DEBT REDUCTION YIELD

As part of the standardization process, securities with extremely high Dividend Yield or Buyback Yield values are excluded from the eligible universe to ensure that the average values used to standardize the variables are less affected by extreme values. To do this, for a given variable, the values for all the securities are first ranked in ascending order within the eligible universe. Missing values are excluded from the ranking. Then, the securities with values that lie in the top 99th percentile rank are excluded provided buyback yield or dividend yield values are greater than 15%. Securities whose buyback yield or dividend yield values is less than 15% but still lie in top 99<sup>th</sup> percentile are not excluded. Debt Reduction Yield values are also winsorized to ensure that the average values used to standardize the variables are less affected by extreme values. To do this, the debt reduction yield values for all securities are first ranked in ascending order within the eligible universe. Missing values

are excluded from the ranking. Then, for values that lie in the bottom 1st percentile rank or in the top 99th percentile rank, their value is set equal to the value of the 1st percentile ranked or 99th percentile ranked security, as applicable.

### 2.2.2 CALCULATING THE Z-SCORES

The z-score for the two variables for each security is calculated using the mean and standard deviation of the relevant variable within eligible universe as described below. The variables used are as follows:

1. Total Yield = Winsorized Dividend Yield + Winsorized Buyback Yield
2. Winsorized Debt Reduction Yield

$$z = \frac{(x - \mu)}{\sigma}$$

Where:

- $x$  is the variable for a given security
- $\mu$  is the mean of the variable in the eligible universe, excluding missing values
- $\sigma$  is the standard deviation of the variable in the eligible universe, excluding missing values

The Z scores are winsorized at +/-3.

### 2.2.3 CALCULATING THE TOTAL SHAREHOLDER YIELD SCORE

Total Shareholder Yield Z-Score is then computed by equal weighting the Total Yield Z Score and the Debt Reduction Yield Z Score. The Debt Reduction Yield Z Score is only considered for companies which have a higher debt compared with the previous fiscal year (a negative Debt Reduction Yield) and have a negative Debt Reduction Yield Z-score.

Composite Total Shareholder Yield Z Score =  
 Mean (Total Yield Z Score, max (Debt Reduction Yield Z Score, 0))

The Composite Total Shareholder Yield Z Score is then translated into a Total Shareholder Yield Score. Total Shareholder Yield Score is computed from the Composite Z Score using the formula mentioned below:

$$\text{Total Shareholder Yield Score} = \begin{cases} (1 + Z) & \text{for } Z > 0 \\ (1 - Z)^{-1} & \text{for } Z < 0 \end{cases}$$

Where Z is Composite Z Score calculated in the previous step.

### 2.3 SECURITY INCLUSION

The MSCI Total Shareholder Yield Index is constructed with a fixed number of securities approach. All the existing constituents of the relevant MSCI Parent Index are ranked based on their Total Shareholder Yield Scores. If multiple securities have the same Total Shareholder Yield Score, then the security having a higher weight in the Parent Index is given a higher rank. A fixed number of securities with the highest positive Total Shareholder Yield Scores are predetermined for every MSCI Total Shareholder Yield Index at initial construction. Rules for arriving at a fixed number of constituents at initial construction are explained in Appendix II. The fixed number for security inclusion determined at initial construction is evaluated at every Index Review to ensure that the Total Shareholder Yield universe has sufficient index market capitalization coverage. Rules for evaluating the fixed number of constituents at every May Annual Index Review are explained in Appendix II.

### 2.4 WEIGHTING SCHEME

For a given rebalancing effective date, all the securities eligible for inclusion in the MSCI Total Shareholder Yield Indexes are weighted by the product of their market capitalization weight in the Parent Index and the Total Shareholder Yield Score.

Total Shareholder Yield Weight =  
 Total Shareholder Yield Score \* Market Capitalization Weight in the Parent Index

The above weights are then normalized to 100%.

Additionally, constituent weights are capped at issuer level to mitigate concentration risk:

1. Issuers in the MSCI Total Shareholder Yield Indexes based on broad parent MSCI Indexes (e.g. MSCI World Index, MSCI Emerging Markets Index etc.) will be capped at 5%
2. Issuers in the MSCI Total Shareholder Yield Indexes based on narrow parent MSCI Indexes will be capped at the maximum weight in the Parent Index.

Narrow parent MSCI Indexes are defined as those indexes for which the maximum market capitalization weight in the Parent Index is more than 10%.

### **3 MAINTAINING MSCI TOTAL SHAREHOLDER YIELD INDEXES**

#### **3.1 ANNUAL INDEX REVIEWS**

The MSCI Total Shareholder Yield Indexes are rebalanced on an annual basis, usually as of the close of the last business day of May, coinciding with May Semi Annual Index Review of the MSCI Global Investable Market Indexes. Fundamental variables as of the end of the April are used. The pro forma MSCI Total Shareholder Yield Indexes are announced nine business days before the effective date.

##### **3.1.1 BUFFER RULES:**

To reduce Index turnover and enhance index stability, buffer rules are applied. A security selection buffer of 50% is applied during the on-going index review.

For example, the MSCI World Total Shareholder Yield Index targets 350 securities and the buffers are applied between rank 176 and 525. The securities in the Parent Index with a Total Shareholder Yield rank at or above 175 will be added to the MSCI World Total Shareholder Yield Index on a priority basis. The existing constituents that have a Total Shareholder Yield rank between 176 and 525 are then successively added until the number of securities in the MSCI World Total Shareholder Yield Index reaches 350. If the number of securities is below 350 after this step, the remaining securities in the Parent Index with the highest Total Shareholder Yield score are added until the number of securities in the MSCI World Total Shareholder Yield Index reaches 350.

#### **3.2 ONGOING EVENT RELATED CHANGES**

In general, the MSCI Total Shareholder Yield Indexes follow the event maintenance of the Parent Index.

##### **3.2.1 IPOs AND OTHER EARLY INCLUSIONS**

IPOs and other newly listed securities will only be considered for inclusion at the next annual Index review in the MSCI Total Shareholder Yield Index, even if they qualify for early inclusion in the Parent Index.

##### **3.2.2 ADDITIONS AND DELETIONS DUE TO CORPORATE EVENTS**

The general treatment of additions and deletions due to corporate events aims at minimizing the turnover in the MSCI Total Shareholder Yield Indexes. A constituent deleted from the Parent Index following a corporate event or during the Quarterly Index Review of

the Parent Index will be simultaneously deleted from the MSCI Total Shareholder Yield Index.

Please refer to Appendix III for more details on the treatment of corporate events.



## APPENDIX I: CALCULATION OF FUNDAMENTAL VARIABLES

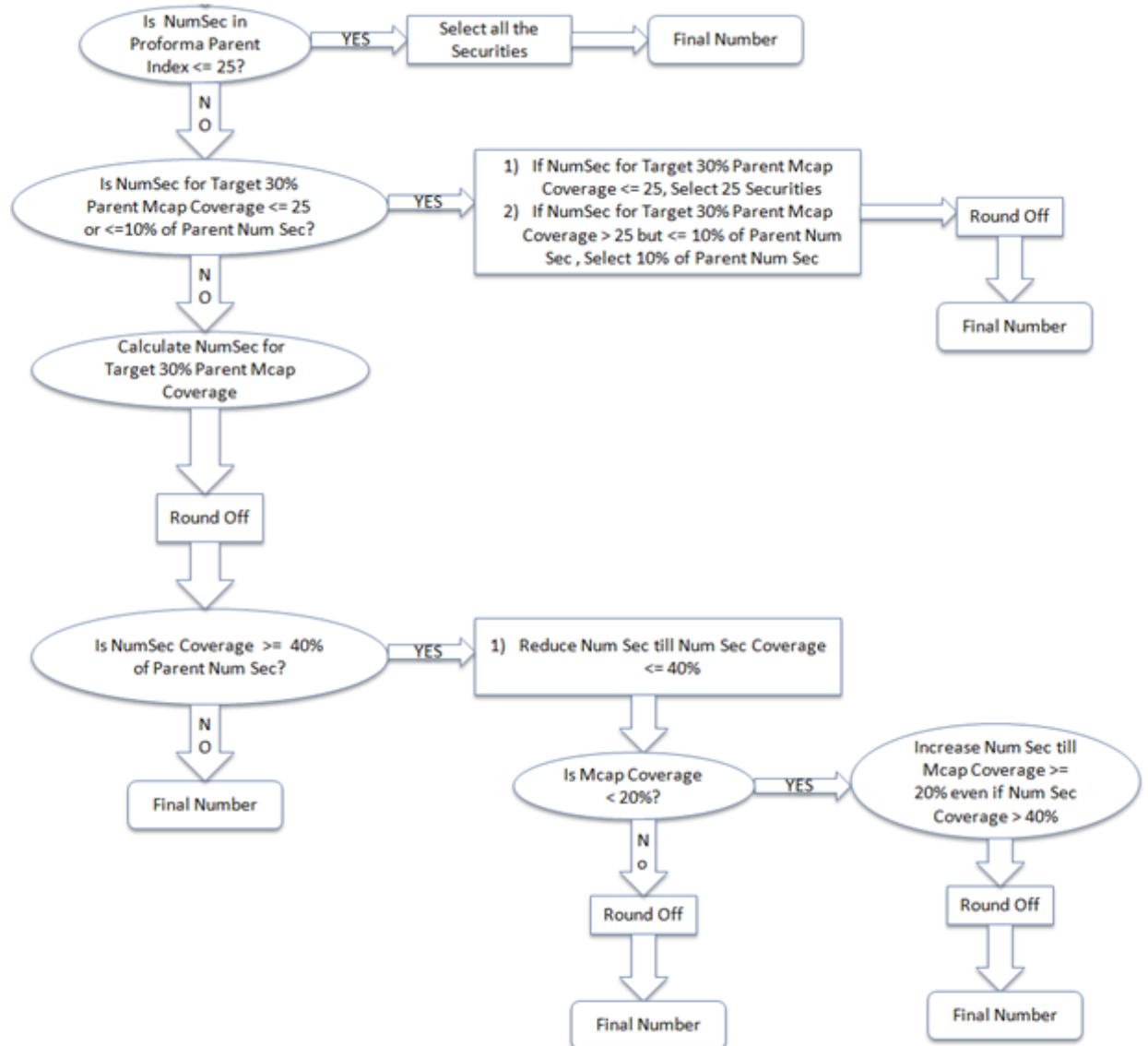
Fundamental Variable	Calculation Details
<p><b>Dividend Yield</b></p>	<p>Dividend Yield is calculated using the trailing 12 month dividend per share figure and the current security price as per the standard MSCI methodology.</p> $\text{Dividend Yield} = \frac{\text{Trailing 12 Month Dividend Per Share}}{\text{Current Security Price}}$ <p>Please refer to MSCI Fundamental Data Methodology books for more details <a href="http://www.msci.com/eqb/methodology/meth_docs/MSCI_Nov13_Fundamental_Data.pdf">http://www.msci.com/eqb/methodology/meth_docs/MSCI_Nov13_Fundamental_Data.pdf</a></p>
<p><b>Buyback Yield</b></p>	<p>Buyback Yield is calculated at issuer level using trailing 12 month (TTM) number of common shares (NOS) outstanding adjusted for relevant corporate events and the current common number of shares outstanding. Preferred stocks and other sharetypes such as units, warrants etc. are excluded from the buyback yield calculation.</p> $\text{Net Buyback Yield} = \frac{\text{Change in TTM NOS}}{\text{Current NOS}}$
<p><b>Debt Reduction Yield</b></p>	<p>Debt Reduction Yield is calculated using reduction in debt over the last one fiscal year and the latest Enterprise Value</p> $\text{Debt Reduction Yield} = \frac{\text{Last Fiscal Year Debt Reduction}}{\text{Enterprise Value}}$ <p>Total debt is utilized for all the sectors except for the financials GICS sector in calculating debt reduction. Long term debt is used for calculating debt reduction for the securities in the financials GICS sector.</p>

## APPENDIX II: RULES TO DETERMINE FIXED NUMBER OF SECURITIES AT INITIAL CONSTRUCTION AND IN ONGOING REBALANCING

### Algorithm to Determine Fixed Number of Securities at Initial Construction

Rank the securities in the proforma parent universe in the descending order of Total Shareholder Yield Score

- NumSec: Number of Securities
- Mcap: Float Market Capitalization

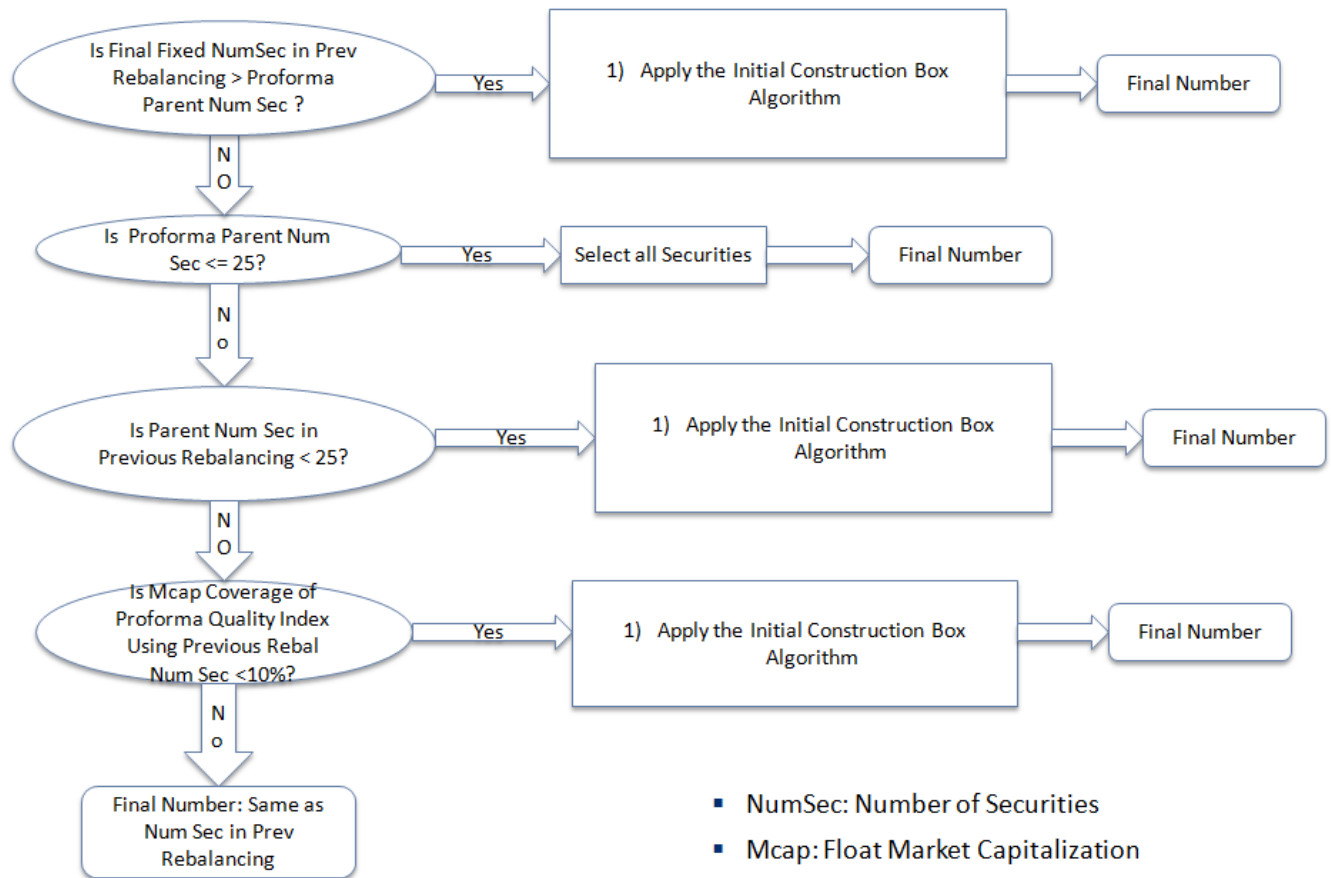


**Rounding Off Rules:**

**Upward rounding off** is done depending on NumSec Obtained in the Previous Box Step

- If NumSec in Previous Step < 100, Nearest Rounding = 10 Securities
- If NumSec in Previous Step >= 100 but < 300, Nearest Rounding = 25 Securities
- If NumSec in Previous Step >= 300, Nearest Rounding = 50 Securities

**Algorithm to reevaluate Fixed Number of Securities at Annual Rebalancing**



### APPENDIX III: CORPORATE EVENTS TREATMENT

This appendix describes the treatment of the most common corporate events in the MSCI Indexes. Details regarding the treatment of all other corporate events not covered in this appendix can be found in the MSCI Corporate Events Methodology book, available at

<http://www.msci.com/products/indexes/size/standard/methodology.html>

Event Type	Event details	Action
Acquisition	Total Shareholder Yield Index constituent acquires another Total Shareholder Yield Index constituent	Maintain acquiring company and remove acquired company
	Total Shareholder Yield Index constituent acquires non Total Shareholder Yield Index constituent	Maintain acquiring company
	Non Total Shareholder Yield Index constituent acquires Total Shareholder Yield Index constituent	Remove acquired company without adding acquiring company
Merger	Total Shareholder Yield Index constituent merges with Total Shareholder Yield Index constituent	Add new company with a constraint factor that is the weighted average of the two constituents
	Total Shareholder Yield Index constituent merges with non Total Shareholder Yield Index constituent	Add new company if MSCI links its price history to the Total Shareholder Yield Index constituent. New company not added if price history is linked to the non Total Shareholder Yield Index constituent
IPO	IPO added to Parent Index	Security will be considered for inclusion in the Total Shareholder Yield Index at the next Annual Index Review
Spin-off	Total Shareholder Yield Index constituent spins off security	Add spun-off security to the Total Shareholder Yield Index with the constraint factor of the spinning security, if it is included in the Parent Index

Event Type	Event details	Action
Conversion	Security A converted to B, A deleted from Parent Index, B added	B inherits constraint factors from A
Country Reclassification	Domicile of company reviewed: Security A deleted from country A, security B added to country B	B inherits constraint factors from A if it is added to the Parent Index
Stock exchange reclassification	Stock exchange (price source) of company reviewed: Security A deleted, security B added	B inherits constraint factors from A if it is added to the Parent Index
Other Events Resulting in Changes in Number of Shares and FIFs	Changes in number of shares and subsequent FIF resulting from other events such as share placements and offerings, and debt-to-equity-swaps	No change in Constraint Factor

## CONTACT US

clientservice@msci.com

### AMERICAS

Americas	1 888 588 4567 *
Atlanta	+ 1 404 551 3212
Boston	+ 1 617 532 0920
Chicago	+ 1 312 675 0545
Monterrey	+ 52 81 1253 4020
New York	+ 1 212 804 3901
San Francisco	+ 1 415 836 8800
Sao Paulo	+ 55 11 3706 1360
Toronto	+ 1 416 628 1007

### EUROPE, MIDDLE EAST & AFRICA

Cape Town	+ 27 21 673 0100
Frankfurt	+ 49 69 133 859 00
Geneva	+ 41 22 817 9777
London	+ 44 20 7618 2222
Milan	+ 39 02 5849 0415
Paris	0800 91 59 17 *

### ASIA PACIFIC

China North	10800 852 1032 *
China South	10800 152 1032 *
Hong Kong	+ 852 2844 9333
Mumbai	+ 91 22 6784 9160
Seoul	00798 8521 3392 *
Singapore	800 852 3749 *
Sydney	+ 61 2 9033 9333
Taipei	008 0112 7513 *
Tokyo	+ 81 3 5290 1555

\* = toll free

## ABOUT MSCI

For more than 40 years, MSCI's research-based indexes and analytics have helped the world's leading investors build and manage better portfolios. Clients rely on our offerings for deeper insights into the drivers of performance and risk in their portfolios, broad asset class coverage and innovative research.

Our line of products and services includes indexes, analytical models, data, real estate benchmarks and ESG research.

MSCI serves 98 of the top 100 largest money managers, according to the most recent P&I ranking.

For more information, visit us at [www.msci.com](http://www.msci.com).

## NOTICE AND DISCLAIMER

This document and all of the information contained in it, including without limitation all text, data, graphs, charts (collectively, the “Information”) is the property of MSCI Inc. or its subsidiaries (collectively, “MSCI”), or MSCI’s licensors, direct or indirect suppliers or any third party involved in making or compiling any Information (collectively, with MSCI, the “Information Providers”) and is provided for informational purposes only. The Information may not be modified, reverse-engineered, reproduced or disseminated in whole or in part without prior written permission from MSCI.

The Information may not be used to create derivative works or to verify or correct other data or information. For example (but without limitation), the Information may not be used to create indexes, databases, risk models, analytics, software, or in connection with the issuing, offering, sponsoring, managing or marketing of any securities, portfolios, financial products or other investment vehicles utilizing or based on, linked to, tracking or otherwise derived from the Information or any other MSCI data, information, products or services.

The user of the Information assumes the entire risk of any use it may make or permit to be made of the Information. NONE OF THE INFORMATION PROVIDERS MAKES ANY EXPRESS OR IMPLIED WARRANTIES OR REPRESENTATIONS WITH RESPECT TO THE INFORMATION (OR THE RESULTS TO BE OBTAINED BY THE USE THEREOF), AND TO THE MAXIMUM EXTENT PERMITTED BY APPLICABLE LAW, EACH INFORMATION PROVIDER EXPRESSLY DISCLAIMS ALL IMPLIED WARRANTIES (INCLUDING, WITHOUT LIMITATION, ANY IMPLIED WARRANTIES OF ORIGINALITY, ACCURACY, TIMELINESS, NON-INFRINGEMENT, COMPLETENESS, MERCHANTABILITY AND FITNESS FOR A PARTICULAR PURPOSE) WITH RESPECT TO ANY OF THE INFORMATION.

Without limiting any of the foregoing and to the maximum extent permitted by applicable law, in no event shall any Information Provider have any liability regarding any of the Information for any direct, indirect, special, punitive, consequential (including lost profits) or any other damages even if notified of the possibility of such damages. The foregoing shall not exclude or limit any liability that may not by applicable law be excluded or limited, including without limitation (as applicable), any liability for death or personal injury to the extent that such injury results from the negligence or willful default of itself, its servants, agents or sub-contractors.

Information containing any historical information, data or analysis should not be taken as an indication or guarantee of any future performance, analysis, forecast or prediction. Past performance does not guarantee future results.

The Information should not be relied on and is not a substitute for the skill, judgment and experience of the user, its management, employees, advisors and/or clients when making investment and other business decisions. All Information is impersonal and not tailored to the needs of any person, entity or group of persons.

None of the Information constitutes an offer to sell (or a solicitation of an offer to buy), any security, financial product or other investment vehicle or any trading strategy.

It is not possible to invest directly in an index. Exposure to an asset class or trading strategy or other category represented by an index is only available through third party investable instruments (if any) based on that index. MSCI does not issue, sponsor, endorse, market, offer, review or otherwise express any opinion regarding any fund, ETF, derivative or other security, investment, financial product or trading strategy that is based on, linked to or seeks to provide an investment return related to the performance of any MSCI index (collectively, “Index Linked Investments”). MSCI makes no assurance that any Index Linked Investments will accurately track index performance or provide positive investment returns. MSCI Inc. is not an investment adviser or fiduciary and MSCI makes no representation regarding the advisability of investing in any Index Linked Investments.

Index returns do not represent the results of actual trading of investable assets/securities. MSCI maintains and calculates indexes, but does not manage actual assets. Index returns do not reflect payment of any sales charges or fees an investor may pay to purchase the securities underlying the index or Index Linked Investments. The imposition of these fees and charges would cause the performance of an Index Linked Investment to be different than the MSCI index performance.

The Information may contain back tested data. Back-tested performance is not actual performance, but is hypothetical. There are frequently material differences between back tested performance results and actual results subsequently achieved by any investment strategy.

Constituents of MSCI equity indexes are listed companies, which are included in or excluded from the indexes according to the application of the relevant index methodologies. Accordingly, constituents in MSCI equity indexes may include MSCI Inc., clients of MSCI or suppliers to MSCI. Inclusion of a security within an MSCI index is not a recommendation by MSCI to buy, sell, or hold such security, nor is it considered to be investment advice.

Data and information produced by various affiliates of MSCI Inc., including MSCI ESG Research Inc. and Barra LLC, may be used in calculating certain MSCI indexes. More information can be found in the relevant index methodologies on [www.msci.com](http://www.msci.com).

MSCI receives compensation in connection with licensing its indexes to third parties. MSCI Inc.’s revenue includes fees based on assets in Index Linked Investments. Information can be found in MSCI Inc.’s company filings on the Investor Relations section of [www.msci.com](http://www.msci.com).

MSCI ESG Research Inc. is a Registered Investment Adviser under the Investment Advisers Act of 1940 and a subsidiary of MSCI Inc. Except with respect to any applicable products or services from MSCI ESG Research, neither MSCI nor any of its products or services recommends, endorses, approves or otherwise expresses any opinion regarding any issuer, securities, financial products or instruments or trading strategies and MSCI’s products or services are not intended to constitute investment advice or a recommendation to make (or refrain from making) any kind of investment decision and may not be relied on as such. Issuers mentioned or included in any MSCI ESG Research materials may include MSCI Inc., clients of MSCI or suppliers to MSCI, and may also purchase research or other products or services from MSCI ESG Research. MSCI ESG Research materials, including materials utilized in any MSCI ESG Indexes or other products, have not been submitted to, nor received approval from, the United States Securities and Exchange Commission or any other regulatory body.

Any use of or access to products, services or information of MSCI requires a license from MSCI. MSCI, Barra, RiskMetrics, IPD, FEA, InvestorForce, and other MSCI brands and product names are the trademarks, service marks, or registered trademarks of MSCI or its subsidiaries in the United States and other jurisdictions. The Global Industry Classification Standard (GICS) was developed by and is the exclusive property of MSCI and Standard & Poor’s. “Global Industry Classification Standard (GICS)” is a service mark of MSCI and Standard & Poor’s.