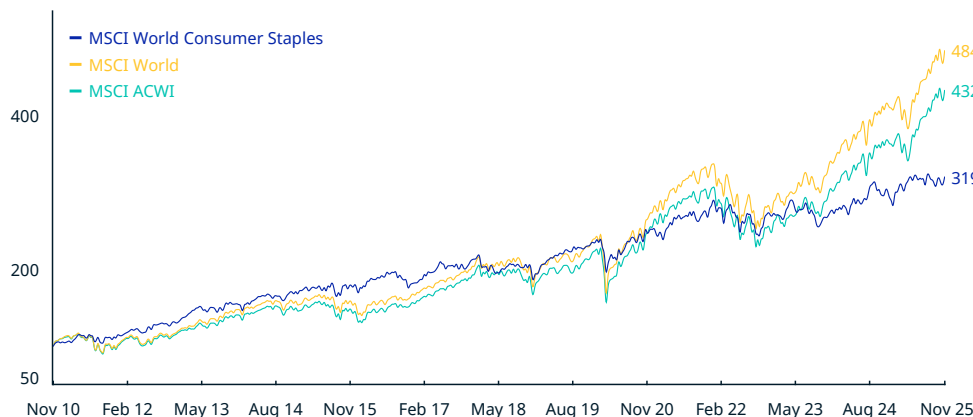


# MSCI World Consumer Staples Index (USD)

The **MSCI World Consumer Staples Index** is designed to capture the large and mid cap segments across 23 Developed Markets (DM) around the world. All securities in the index are classified in the Consumer Staples sector as per the Global Industry Classification Standard (GICS®).

For a complete description of the index methodology, please see [Index methodology - MSCI](#).

## CUMULATIVE INDEX PERFORMANCE – NET RETURNS (USD) (NOV 2010 – NOV 2025)



## ANNUAL PERFORMANCE (%)

Year	MSCI World Consumer Staples	MSCI World	MSCI ACWI
2024	5.65	18.67	17.49
2023	2.31	23.79	22.20
2022	-6.13	-18.14	-18.36
2021	13.06	21.82	18.54
2020	7.78	15.90	16.25
2019	22.80	27.67	26.60
2018	-10.10	-8.71	-9.41
2017	17.04	22.40	23.97
2016	1.63	7.51	7.86
2015	6.35	-0.87	-2.36
2014	7.31	4.94	4.16
2013	21.28	26.68	22.80
2012	13.36	15.83	16.13
2011	8.58	-5.54	-7.35

## INDEX PERFORMANCE – NET RETURNS (%) (NOV 28, 2025)

	1 Mo	3 Mo	1 Yr	YTD	ANNUALIZED				Since Dec 29, 2000	FUNDAMENTALS (NOV 28, 2025)			
					3 Yr	5 Yr	10 Yr			Div Yld (%)	P/E	P/E Fwd	P/BV
MSCI World Consumer Staples	3.88	0.48	5.18	9.95	5.33	5.29	6.07	7.13		2.75	21.38	19.34	4.86
MSCI World	0.28	5.58	16.99	20.12	19.11	12.90	11.88	7.20		1.58	24.23	20.25	3.93
MSCI ACWI	-0.01	5.93	18.21	21.07	18.64	11.97	11.41	7.09		1.66	23.07	19.21	3.61

## INDEX RISK AND RETURN CHARACTERISTICS (NOV 28, 2025)

	Turnover (%) <sup>1</sup>	ANNUALIZED STD DEV (%) <sup>2</sup>			SHARPE RATIO <sup>2,3</sup>			Since Dec 29, 2000	MAXIMUM DRAWDOWN	
		3 Yr	5 Yr	10 Yr	3 Yr	5 Yr	10 Yr		(%)	Period YYYY-MM-DD
MSCI World Consumer Staples	2.13	10.91	12.32	11.71	0.09	0.23	0.37	0.51	39.64	2007-12-10–2009-03-09
MSCI World	2.37	11.99	14.46	14.73	1.13	0.70	0.69	0.44	57.82	2007-10-31–2009-03-09
MSCI ACWI	2.56	11.78	14.06	14.50	1.11	0.66	0.67	0.39	58.38	2007-10-31–2009-03-09

<sup>1</sup> Last 12 months

<sup>2</sup> Based on monthly net returns data

<sup>3</sup> Based on NY FED Overnight SOFR from Sep 1 2021 & on ICE LIBOR 1M prior that date

\* Developed Markets countries include: Australia, Austria, Belgium, Canada, Denmark, Finland, France, Germany, Hong Kong, Ireland, Israel, Italy, Japan, Netherlands, New Zealand, Norway, Portugal, Singapore, Spain, Sweden, Switzerland, the UK and the US.

The MSCI World Consumer Staples Index was launched on Sep 15, 1999. Data prior to the launch date is back-tested test (i.e. calculations of how the index might have performed over that time period had the index existed). There are frequently material differences between back-tested performance and actual results. Past performance – whether actual or back-tested – is no indication or guarantee of future performance.

## INDEX CHARACTERISTICS

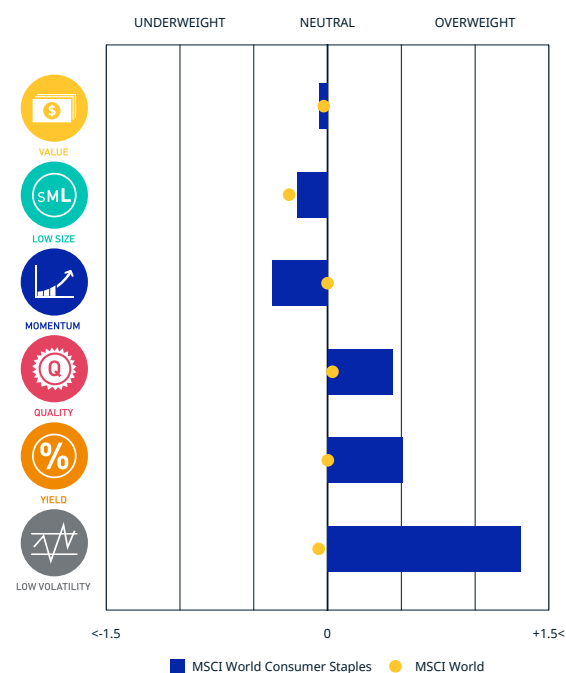
MSCI World Consumer Staples	
Number of Constituents	94
Mkt Cap (USD Millions)	
Index	4,446,947.87
Largest	484,593.88
Smallest	3,656.65
Average	47,307.96
Median	18,952.72

## TOP 10 CONSTITUENTS

	Country	Float Adj Mkt Cap (USD Billions)	Index Wt. (%)
WALMART	US	484.59	10.90
COSTCO WHOLESALE CORP	US	404.88	9.10
PROCTER & GAMBLE CO	US	346.77	7.80
COCA COLA (THE)	US	298.95	6.72
NESTLE	CH	256.16	5.76
PHILIP MORRIS INTL	US	245.13	5.51
PEPSICO	US	203.38	4.57
UNILEVER PLC (GB)	GB	147.62	3.32
BRITISH AMERICAN TOBACCO	GB	128.06	2.88
L'OREAL	FR	104.70	2.35
Total		2,620.24	58.92

## FACTORS - KEY EXPOSURES THAT DRIVE RISK AND RETURN

## MSCI FACTOR BOX



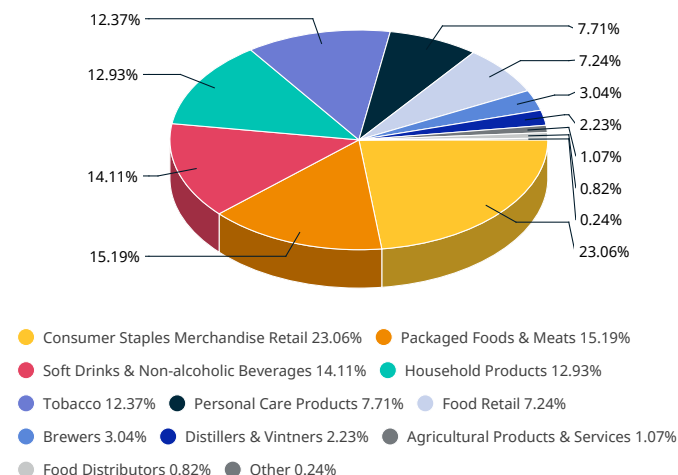
## MSCI FaCS

- VALUE**  
Relatively Inexpensive Stocks
- LOW SIZE**  
Smaller Companies
- MOMENTUM**  
Rising Stocks
- QUALITY**  
Sound Balance Sheet Stocks
- YIELD**  
Cash Flow Paid Out
- LOW VOLATILITY**  
Lower Risk Stocks

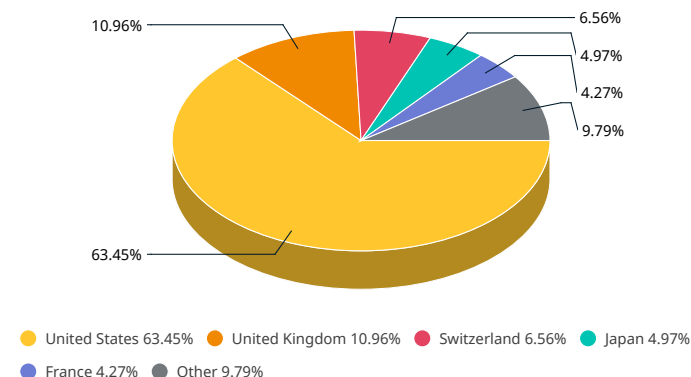
MSCI FaCS provides absolute factor exposures relative to a broad global index - MSCI ACWI IMI.

Neutral factor exposure (FaCS = 0) represents MSCI ACWI IMI.

## SUB-INDUSTRY WEIGHTS



## COUNTRY WEIGHTS



**MSCI FACTOR BOX AND FaCS FRAMEWORK (Please refer to complete description of the MSCI FaCS methodology [here](#))**

MSCI FaCS is a standard method for evaluating and reporting the Factor characteristics of equity portfolios. MSCI FaCS consists of Factor Groups (e.g. Value, Size, Momentum, Quality, Yield, and Volatility) that have been extensively documented in academic literature and validated by MSCI Research as key drivers of risk and return in equity portfolios. These Factor Groups are constructed by aggregating 16 factors (e.g. Book-to-Price, Earnings/Dividend Yields, LT Reversal, Leverage, Earnings Variability/Quality, Beta) from the latest Barra global equity factor risk model, GEMLT, designed to make fund comparisons transparent and intuitive for use. The MSCI Factor Box, which is powered by MSCI FaCS, provides a visualization designed to easily compare absolute exposures of funds/indexes and their benchmarks along 6 Factor Groups that have historically demonstrated excess market returns over the long run.

**ABOUT MSCI**

MSCI (NYSE: MSCI Inc.) strengthens global markets by connecting participants across the financial ecosystem with a common language. Our research-based data, analytics and indexes, supported by advanced technology, set standards for global investors and help our clients understand risks and opportunities so they can make better decisions and unlock innovation. We serve asset managers and owners, private-market sponsors and investors, hedge funds, wealth managers, banks, insurers and corporates. To learn more, please visit [www.msci.com](http://www.msci.com).

The data, data feeds, databases, reports, text, graphs, charts, images, videos, recordings, models, metrics, analytics, indexes, assessments, ratings, scores, software, websites, products, services and other information delivered in connection with this notice (the "Information"): (a) are proprietary information of MSCI and its suppliers, (b) may not be used for commercial purposes without prior written permission from MSCI Inc. or its affiliates ("MSCI"), and (c) are not investment advice and must not be relied on as such. The Information and its use are further subject to the disclaimer at <https://www.msci.com/legal/notice-and-disclaimer>. As detailed therein, MSCI AND ITS SUPPLIERS MAKE NO EXPRESS OR IMPLIED WARRANTIES OF MERCHANTABILITY, FITNESS FOR A PARTICULAR PURPOSE OR OTHERWISE WITH RESPECT TO THE INFORMATION HEREIN AND DISCLAIM ALL LIABILITY TO THE MAXIMUM EXTENT PERMITTED BY LAW. For information about how MSCI collects and uses personal data, refer to <https://www.msci.com/privacy-pledge>.

© 2025 MSCI Inc. All rights reserved.

