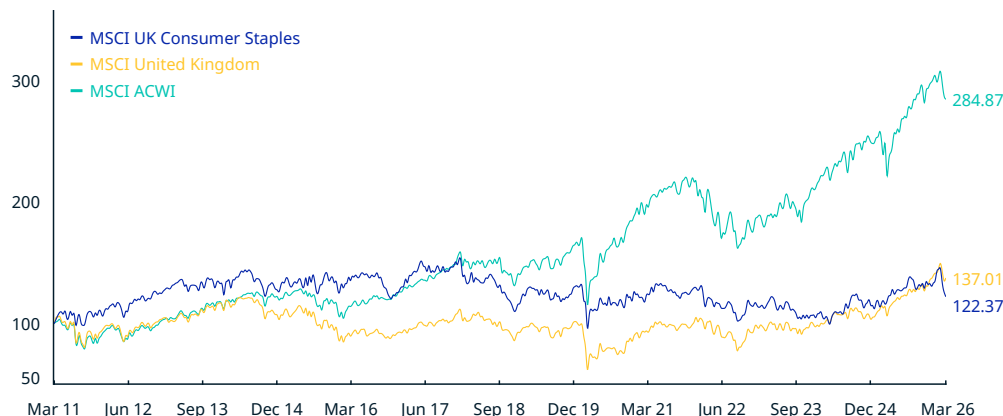


MSCI UK Consumer Staples Index (USD)

The **MSCI UK Consumer Staples Index** is designed to capture the large and mid cap segments of the UK equity universe. All securities in the index are classified in the Consumer Staples sector as per the Global Industry Classification Standard (GICS®).

For a complete description of the index methodology, please see [Index methodology - MSCI](#).

CUMULATIVE INDEX PERFORMANCE – PRICE RETURNS (USD) (MAR 2011 – MAR 2026)



ANNUAL PERFORMANCE (%)

Year	MSCI UK Consumer Staples	MSCI United Kingdom	MSCI ACWI
2025	15.42	30.40	20.60
2024	7.88	3.42	15.73
2023	-6.42	9.51	20.09
2022	-12.20	-8.51	-19.80
2021	5.26	13.92	16.80
2020	-5.57	-13.40	14.33
2019	16.63	15.24	24.05
2018	-25.69	-17.74	-11.18
2017	20.30	17.41	21.62
2016	-6.11	-4.22	5.63
2015	3.82	-11.03	-4.26
2014	-6.00	-8.74	2.10
2013	10.21	16.21	20.25
2012	12.50	10.79	13.43

INDEX PERFORMANCE – PRICE RETURNS (%) (MAR 31, 2026)

	1 Mo	3 Mo	1 Yr	YTD	ANNUALIZED				Since Dec 30, 1994
					3 Yr	5 Yr	10 Yr		
MSCI UK Consumer Staples	-15.64	-7.82	3.90	-7.82	1.83	-0.07	-1.28	4.74	
MSCI United Kingdom	-8.28	0.96	21.31	0.96	12.44	8.15	4.05	3.13	
MSCI ACWI	-7.36	-3.52	18.35	-3.52	14.82	7.77	9.41	6.06	

FUNDAMENTALS (MAR 31, 2026)

Div Yld (%)	P/E	P/E Fwd	P/BV
4.52	13.69	12.69	3.16
3.16	15.74	13.02	2.32
1.75	21.77	17.12	3.43

INDEX RISK AND RETURN CHARACTERISTICS (MAR 31, 2026)

	Turnover (%) ¹	ANNUALIZED STD DEV (%) ²			SHARPE RATIO ^{2,3}			Since Dec 30, 1994	MAXIMUM DRAWDOWN	
		3 Yr	5 Yr	10 Yr	3 Yr	5 Yr	10 Yr		(%)	Period YYYY-MM-DD
MSCI UK Consumer Staples	2.60	16.51	15.14	15.38	-0.09	-0.15	-0.16	0.20	51.46	2007-11-01–2009-03-09
MSCI United Kingdom	2.22	12.54	14.45	15.63	0.62	0.38	0.19	0.10	65.47	2007-10-31–2009-03-09
MSCI ACWI	2.47	11.68	14.42	14.41	0.84	0.36	0.54	0.29	59.61	2007-10-31–2009-03-09

¹ Last 12 months

² Based on monthly price returns data

³ Based on NY FED Overnight SOFR from Sep 1 2021 & on ICE LIBOR 1M prior that date

MSCI UK Consumer Staples Index (USD)

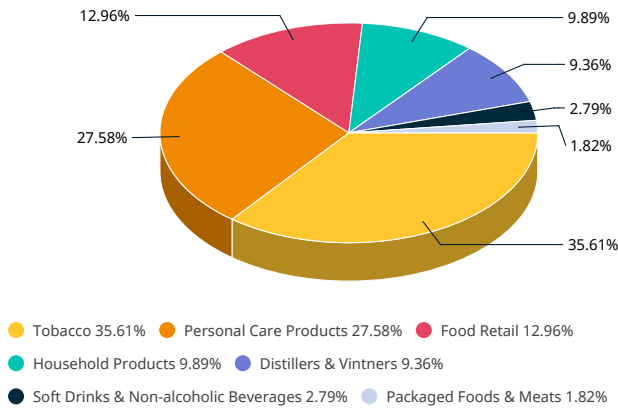
INDEX CHARACTERISTICS

MSCI UK Consumer Staples	
Number of Constituents	10
Mkt Cap (USD Millions)	
Index	437,864.02
Largest	125,558.01
Smallest	7,684.17
Average	43,786.40
Median	35,108.25

TOP 10 CONSTITUENTS

	Float Adj Mkt Cap (USD Billions)	Index Wt. (%)
BRITISH AMERICAN TOBACCO	125.56	28.68
UNILEVER PLC (GB)	120.75	27.58
RECKITT BENCKISER GROUP	43.28	9.89
DIAGEO	40.99	9.36
TESCO	39.84	9.10
IMPERIAL BRANDS	30.37	6.94
COCA-COLA HBC CDI	12.21	2.79
MARKS & SPENCER GROUP	9.20	2.10
ASSOCIATED BRITISH FOODS	7.97	1.82
SAINSBURY (J)	7.68	1.75
Total	437.86	100.00

SUB-INDUSTRY WEIGHTS



The MSCI UK Consumer Staples Index was launched on Sep 15, 1999. Data prior to the launch date is back-tested test (i.e. calculations of how the index might have performed over that time period had the index existed). There are frequently material differences between back-tested performance and actual results. Past performance – whether actual or back-tested – is no indication or guarantee of future performance.

ABOUT MSCI

MSCI (NYSE: MSCI Inc.) strengthens global markets by connecting participants across the financial ecosystem with a common language. Our research-based data, analytics and indexes, supported by advanced technology, set standards for global investors and help our clients understand risks and opportunities so they can make better decisions and unlock innovation. We serve asset managers and owners, private-market sponsors and investors, hedge funds, wealth managers, banks, insurers and corporates. To learn more, please visit www.msci.com.

The data, data feeds, databases, reports, text, graphs, charts, images, videos, recordings, models, metrics, analytics, indexes, assessments, ratings, scores, software, websites, products, services and other information delivered in connection with this notice (the "Information"): (a) are proprietary information of MSCI and its suppliers, (b) may not be used for commercial purposes without prior written permission from MSCI Inc. or its affiliates ("MSCI"), and (c) are not investment advice and must not be relied on as such. The Information and its use are further subject to the disclaimer at <https://www.msci.com/legal/notice-and-disclaimer>. As detailed therein, MSCI AND ITS SUPPLIERS MAKE NO EXPRESS OR IMPLIED WARRANTIES OF MERCHANTABILITY, FITNESS FOR A PARTICULAR PURPOSE OR OTHERWISE WITH RESPECT TO THE INFORMATION HEREIN AND DISCLAIM ALL LIABILITY TO THE MAXIMUM EXTENT PERMITTED BY LAW. For information about how MSCI collects and uses personal data, refer to <https://www.msci.com/privacy-pledge>.

© 2026 MSCI Inc. All rights reserved.

