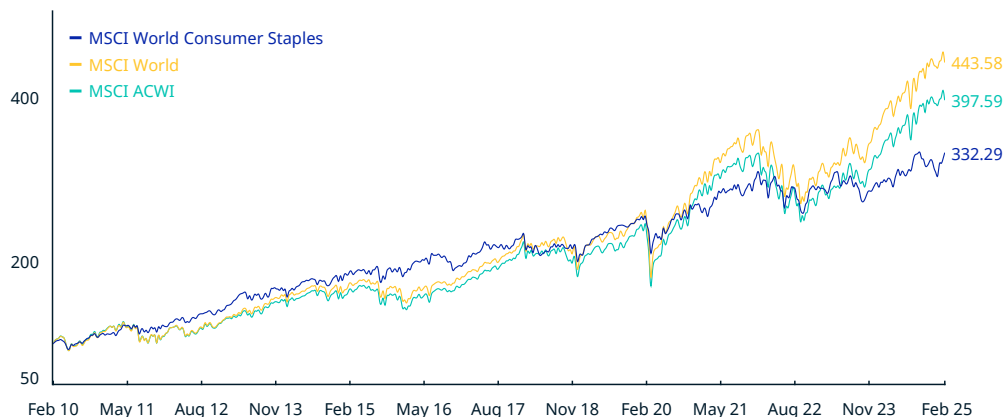


# MSCI World Consumer Staples Index (USD)

The **MSCI World Consumer Staples Index** is designed to capture the large and mid cap segments across 23 Developed Markets (DM) around the world. All securities in the index are classified in the Consumer Staples sector as per the Global Industry Classification Standard (GICS®).

For a complete description of the index methodology, please see [Index methodology - MSCI](#).

## CUMULATIVE INDEX PERFORMANCE – NET RETURNS (USD) (FEB 2010 – FEB 2025)



## ANNUAL PERFORMANCE (%)

Year	MSCI World Consumer Staples	MSCI World	MSCI ACWI
2024	5.65	18.67	17.49
2023	2.31	23.79	22.20
2022	-6.13	-18.14	-18.36
2021	13.06	21.82	18.54
2020	7.78	15.90	16.25
2019	22.80	27.67	26.60
2018	-10.10	-8.71	-9.41
2017	17.04	22.40	23.97
2016	1.63	7.51	7.86
2015	6.35	-0.87	-2.36
2014	7.31	4.94	4.16
2013	21.28	26.68	22.80
2012	13.36	15.83	16.13
2011	8.58	-5.54	-7.35

## INDEX PERFORMANCE – NET RETURNS (%) (FEB 28, 2025)

	1 Mo	3 Mo	1 Yr	YTD	ANNUALIZED				Since Dec 29, 2000
					3 Yr	5 Yr	10 Yr	Since Dec 29, 2000	
MSCI World Consumer Staples	4.85	2.18	11.75	6.82	4.05	7.69	5.79	7.23	
MSCI World	-0.72	0.11	15.63	2.78	10.22	13.91	9.82	6.74	
MSCI ACWI	-0.60	0.30	15.06	2.73	9.14	12.79	9.11	6.59	

## FUNDAMENTALS (FEB 28, 2025)

Div Yld (%)	P/E	P/E Fwd	P/BV
2.60	20.93	19.77	4.77
1.72	22.85	19.26	3.57
1.81	21.81	18.19	3.27

## INDEX RISK AND RETURN CHARACTERISTICS (FEB 28, 2025)

	Turnover (%) <sup>1</sup>	ANNUALIZED STD DEV (%) <sup>2</sup>			SHARPE RATIO <sup>2,3</sup>			Since Dec 29, 2000	MAXIMUM DRAWDOWN	
		3 Yr	5 Yr	10 Yr	3 Yr	5 Yr	10 Yr		(%)	Period YYYY-MM-DD
MSCI World Consumer Staples	1.41	12.99	13.25	12.00	0.05	0.43	0.37	0.52	39.64	2007-12-10–2009-03-09
MSCI World	2.36	16.49	17.42	14.99	0.43	0.69	0.58	0.41	57.82	2007-10-31–2009-03-09
MSCI ACWI	2.57	16.08	17.01	14.78	0.37	0.65	0.54	0.37	58.38	2007-10-31–2009-03-09

<sup>1</sup> Last 12 months

<sup>2</sup> Based on monthly net returns data

<sup>3</sup> Based on NY FED Overnight SOFR from Sep 1 2021 & on ICE LIBOR 1M prior that date

\* Developed Markets countries include: Australia, Austria, Belgium, Canada, Denmark, Finland, France, Germany, Hong Kong, Ireland, Israel, Italy, Japan, Netherlands, New Zealand, Norway, Portugal, Singapore, Spain, Sweden, Switzerland, the UK and the US.

The MSCI World Consumer Staples Index was launched on Sep 15, 1999. Data prior to the launch date is back-tested test (i.e. calculations of how the index might have performed over that time period had the index existed). There are frequently material differences between back-tested performance and actual results. Past performance – whether actual or back-tested – is no indication or guarantee of future performance.

**INDEX CHARACTERISTICS**

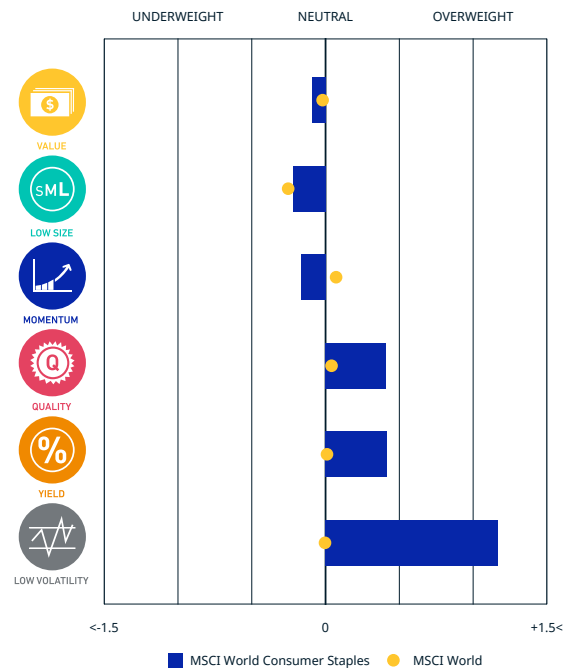
MSCI World Consumer Staples	
Number of Constituents	104
Mkt Cap (USD Millions)	
Index	4,466,279.17
Largest	464,611.34
Smallest	2,281.25
Average	42,944.99
Median	16,222.42

**TOP 10 CONSTITUENTS**

	Country	Float Adj Mkt Cap (USD Billions)	Index Wt. (%)
COSTCO WHOLESALE CORP	US	464.61	10.40
WALMART	US	435.96	9.76
PROCTER & GAMBLE CO	US	408.47	9.15
COCA COLA (THE)	US	291.56	6.53
NESTLE	CH	252.98	5.66
PHILIP MORRIS INTL	US	241.43	5.41
PEPSICO	US	210.56	4.71
UNILEVER PLC (GB)	GB	140.26	3.14
ALTRIA GROUP	US	95.29	2.13
L'OREAL	FR	88.16	1.97
Total		2,629.29	58.87

**FACTORS - KEY EXPOSURES THAT DRIVE RISK AND RETURN**

**MSCI FACTOR BOX**

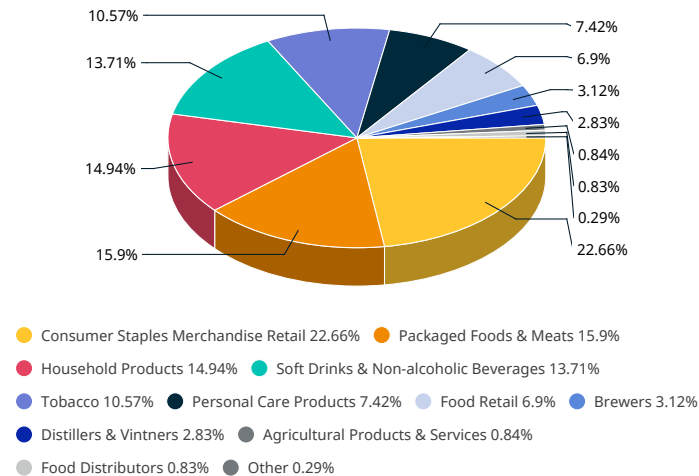


**MSCI FaCS**

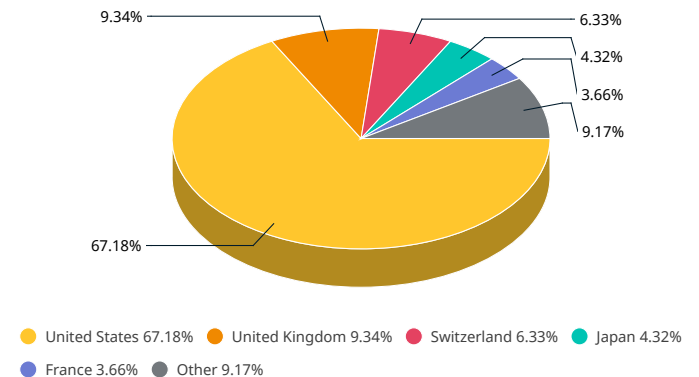
- VALUE**  
Relatively Inexpensive Stocks
- LOW SIZE**  
Smaller Companies
- MOMENTUM**  
Rising Stocks
- QUALITY**  
Sound Balance Sheet Stocks
- YIELD**  
Cash Flow Paid Out
- LOW VOLATILITY**  
Lower Risk Stocks

MSCI FaCS provides absolute factor exposures relative to a broad global index - MSCI ACWI IMI. Neutral factor exposure (FaCS = 0) represents MSCI ACWI IMI.

**SUB-INDUSTRY WEIGHTS**



**COUNTRY WEIGHTS**



**MSCI FACTOR BOX AND FaCS FRAMEWORK (Please refer to complete description of the MSCI FaCS methodology [here](#))**

MSCI FaCS is a standard method for evaluating and reporting the Factor characteristics of equity portfolios. MSCI FaCS consists of Factor Groups (e.g. Value, Size, Momentum, Quality, Yield, and Volatility) that have been extensively documented in academic literature and validated by MSCI Research as key drivers of risk and return in equity portfolios. These Factor Groups are constructed by aggregating 16 factors (e.g. Book-to-Price, Earnings/Dividend Yields, LT Reversal, Leverage, Earnings Variability/Quality, Beta) from the latest Barra global equity factor risk model, GEMLT, designed to make fund comparisons transparent and intuitive for use. The MSCI Factor Box, which is powered by MSCI FaCS, provides a visualization designed to easily compare absolute exposures of funds/indexes and their benchmarks along 6 Factor Groups that have historically demonstrated excess market returns over the long run.

**ABOUT MSCI**

MSCI is a leading provider of critical decision support tools and services for the global investment community. With over 45 years of expertise in research, data and technology, we power better investment decisions by enabling clients to understand and analyze key drivers of risk and return and confidently build more effective portfolios. We create industry-leading research-enhanced solutions that clients use to gain insight into and improve transparency across the investment process. To learn more, please visit [www.msci.com](http://www.msci.com).

The information contained herein (the "Information") may not be reproduced or disseminated in whole or in part without prior written permission from MSCI. The Information may not be used to verify or correct other data, to create indexes, risk models, or analytics, or in connection with issuing, offering, sponsoring, managing or marketing any securities, portfolios, financial products or other investment vehicles. Historical data and analysis should not be taken as an indication or guarantee of any future performance, analysis, forecast or prediction. None of the Information or MSCI index or other product or service constitutes an offer to buy or sell, or a promotion or recommendation of, any security, financial instrument or product or trading strategy. Further, none of the Information or any MSCI index is intended to constitute investment advice or a recommendation to make (or refrain from making) any kind of investment decision and may not be relied on as such. The Information is provided "as is" and the user of the Information assumes the entire risk of any use it may make or permit to be made of the Information. NONE OF MSCI INC. OR ANY OF ITS SUBSIDIARIES OR ITS OR THEIR DIRECT OR INDIRECT SUPPLIERS OR ANY THIRD PARTY INVOLVED IN THE MAKING OR COMPILING OF THE INFORMATION (EACH, AN "MSCI PARTY") MAKES ANY WARRANTIES OR REPRESENTATIONS AND, TO THE MAXIMUM EXTENT PERMITTED BY LAW, EACH MSCI PARTY HEREBY EXPRESSLY DISCLAIMS ALL IMPLIED WARRANTIES, INCLUDING WARRANTIES OF MERCHANTABILITY AND FITNESS FOR A PARTICULAR PURPOSE. WITHOUT LIMITING ANY OF THE FOREGOING AND TO THE MAXIMUM EXTENT PERMITTED BY LAW, IN NO EVENT SHALL ANY OF THE MSCI PARTIES HAVE ANY LIABILITY REGARDING ANY OF THE INFORMATION FOR ANY DIRECT, INDIRECT, SPECIAL, PUNITIVE, CONSEQUENTIAL (INCLUDING LOST PROFITS) OR ANY OTHER DAMAGES EVEN IF NOTIFIED OF THE POSSIBILITY OF SUCH DAMAGES. The foregoing shall not exclude or limit any liability that may not by applicable law be excluded or limited.

© 2025 MSCI Inc. All rights reserved.