

# MSCI Brazil Consumer Staples Index (USD)

The MSCI Brazil Consumer Staples Index is designed to capture the large and mid cap segments of the Brazilian equity universe. All securities in the index are classified in the Consumer Staples sector as per the Global Industry Classification Standard (GICS®).

For a complete description of the index methodology, please see [Index methodology - MSCI](#).

## CUMULATIVE INDEX PERFORMANCE – GROSS RETURNS (USD) (MAR 2011 – MAR 2026)



## ANNUAL PERFORMANCE (%)

Year	MSCI Brazil Consumer Staples	MSCI Brazil	MSCI Emerging Markets
2025	27.59	50.44	34.36
2024	-28.92	-29.47	8.05
2023	12.88	33.38	10.27
2022	-15.19	14.61	-19.74
2021	-9.61	-17.19	-2.22
2020	-26.94	-18.87	18.69
2019	37.24	26.66	18.88
2018	-31.17	-0.15	-14.24
2017	20.83	24.48	37.75
2016	23.55	66.75	11.60
2015	-31.78	-41.18	-14.60
2014	-6.25	-13.74	-1.82
2013	-10.50	-15.79	-2.27
2012	22.17	0.34	18.63

## INDEX PERFORMANCE – GROSS RETURNS (%) (MAR 31, 2026)

	1 Mo	3 Mo	1 Yr	YTD	ANNUALIZED				Since Dec 30, 1994
					3 Yr	5 Yr	10 Yr		
<b>MSCI Brazil Consumer Staples</b>	-3.85	15.15	32.78	15.15	6.23	-1.11	-2.39	7.75	
<b>MSCI Brazil</b>	-1.84	19.17	57.09	19.17	20.28	12.19	10.24	8.04	
<b>MSCI Emerging Markets</b>	-13.03	-0.10	30.30	-0.10	15.41	4.16	8.24	6.12	

## FUNDAMENTALS (MAR 31, 2026)

Div Yld (%)	P/E	P/E Fwd	P/BV
8.09	14.39	15.23	2.86
5.44	10.89	9.82	2.05
2.32	16.52	11.52	2.16

## INDEX RISK AND RETURN CHARACTERISTICS (MAR 31, 2026)

	Turnover (%) <sup>1</sup>	ANNUALIZED STD DEV (%) <sup>2</sup>			SHARPE RATIO <sup>2,3</sup>			Since Dec 30, 1994	MAXIMUM DRAWDOWN	
		3 Yr	5 Yr	10 Yr	3 Yr	5 Yr	10 Yr		(%)	Period YYYY-MM-DD
<b>MSCI Brazil Consumer Staples</b>	8.81	25.93	26.85	28.92	0.17	-0.04	-0.02	0.31	68.32	2013-03-08–2025-02-25
<b>MSCI Brazil</b>	3.58	23.87	26.70	31.67	0.69	0.44	0.40	0.33	75.79	2008-05-19–2016-01-21
<b>MSCI Emerging Markets</b>	4.49	15.65	17.09	16.73	0.70	0.13	0.42	0.26	65.14	2007-10-29–2008-10-27

<sup>1</sup> Last 12 months <sup>2</sup> Based on monthly gross returns data

<sup>3</sup> Based on NY FED Overnight SOFR from Sep 1 2021 & on ICE LIBOR 1M prior that date

# MSCI Brazil Consumer Staples Index (USD)

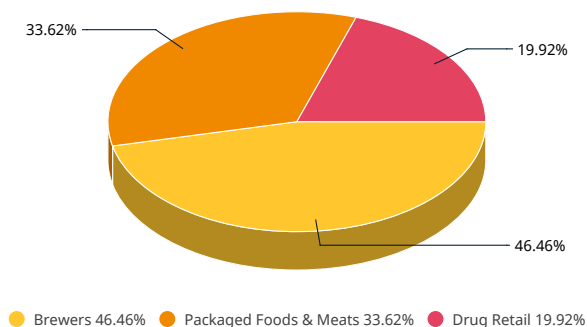
## INDEX CHARACTERISTICS

MSCI Brazil Consumer Staples	
<b>Number of Constituents</b>	4
Mkt Cap ( USD Millions)	
<b>Index</b>	29,723.63
<b>Largest</b>	13,808.92
<b>Smallest</b>	2,680.95
<b>Average</b>	7,430.91
<b>Median</b>	6,616.88

## TOP 4 CONSTITUENTS

	Float Adj Mkt Cap ( USD Billions)	Index Wt. (%)
AMBEV ON (NEW)	13.81	46.46
JBS A	7.31	24.60
RAIA DROGASIL ON	5.92	19.92
MBRF GLOBAL FOODS ON	2.68	9.02
<b>Total</b>	<b>29.72</b>	<b>100.00</b>

## SUB-INDUSTRY WEIGHTS



The MSCI Brazil Consumer Staples Index was launched on Sep 15, 1999. Data prior to the launch date is back-tested test (i.e. calculations of how the index might have performed over that time period had the index existed). There are frequently material differences between back-tested performance and actual results. Past performance – whether actual or back-tested – is no indication or guarantee of future performance.

## ABOUT MSCI

MSCI (NYSE: MSCI Inc.) strengthens global markets by connecting participants across the financial ecosystem with a common language. Our research-based data, analytics and indexes, supported by advanced technology, set standards for global investors and help our clients understand risks and opportunities so they can make better decisions and unlock innovation. We serve asset managers and owners, private-market sponsors and investors, hedge funds, wealth managers, banks, insurers and corporates. To learn more, please visit [www.msci.com](http://www.msci.com).

The data, data feeds, databases, reports, text, graphs, charts, images, videos, recordings, models, metrics, analytics, indexes, assessments, ratings, scores, software, websites, products, services and other information delivered in connection with this notice (the "Information"): (a) are proprietary information of MSCI and its suppliers, (b) may not be used for commercial purposes without prior written permission from MSCI Inc. or its affiliates ("MSCI"), and (c) are not investment advice and must not be relied on as such. The Information and its use are further subject to the disclaimer at <https://www.msci.com/legal/notice-and-disclaimer>. As detailed therein, MSCI AND ITS SUPPLIERS MAKE NO EXPRESS OR IMPLIED WARRANTIES OF MERCHANTABILITY, FITNESS FOR A PARTICULAR PURPOSE OR OTHERWISE WITH RESPECT TO THE INFORMATION HEREIN AND DISCLAIM ALL LIABILITY TO THE MAXIMUM EXTENT PERMITTED BY LAW. For information about how MSCI collects and uses personal data, refer to <https://www.msci.com/privacy-pledge>.

© 2026 MSCI Inc. All rights reserved.

