

# **MSCI Climate Change Indexes Methodology**

**July 2024**

## Contents

1	Introduction .....	4
2	Index Construction Methodology .....	5
2.1	Eligibility Criteria .....	5
2.2	Minimum Requirements .....	5
2.3	Eligible Universe .....	6
2.4	Determination Of Combined Score .....	6
2.4.1	Category Tilt Score .....	6
2.4.2	Relative Tilt Score .....	7
2.4.3	Combined Score.....	7
2.5	Weighting Scheme .....	7
2.5.1	Intermediate Universe.....	7
2.5.1.1	High Climate Impact Intermediate Universe .....	7
2.5.1.2	Low Climate Impact Intermediate Universe.....	7
2.5.2	Final Universe.....	8
2.5.3	Capping of Security Weight In Final Universe .....	8
2.5.4	EU CTB Check .....	8
2.6	Treatment of Unrated Companies .....	8
3	Maintaining the Indexes .....	9
3.1	Semi-Annual Index Reviews .....	9
3.2	Ongoing Event Related Changes.....	9
4	MSCI ESG Research .....	11
4.1	MSCI ESG Controversies .....	11
4.2	MSCI ESG Business Involvement Screening Research.....	11
4.3	MSCI Climate Change Metrics .....	11
	Appendix I: Companies Involved in Controversial Weapons Business .....	12
	Appendix II: MSCI Low Carbon Transition Risk Assessment .....	14
	Appendix III: Calculation of Target Metrics .....	16
	Appendix IV: Decarbonization Trajectory of Indexes.....	20

Appendix V: Iterative Process ..... 22

Appendix VI: Minimum Requirements of EU CTB ..... 25

Appendix VII: Methodology Set ..... 26

Appendix VIII: Changes to this Document ..... 27

## 1 Introduction

The MSCI Climate Change Indexes (the 'Indexes') aim to represent the performance of an investment strategy that re-weights securities based upon the opportunities and risks associated with the transition to a lower carbon economy. The Indexes also excludes companies meeting the below exclusion criteria –

- Companies involved in manufacturing of Controversial Weapons
- Companies involved in ESG Controversies
- Companies involved in Environmental Controversies
- Companies involved in the Tobacco-related businesses
- Companies involved in Thermal Coal extraction and mining

The Indexes are constructed from their corresponding market capitalization weighted indexes (the 'Parent Indexes') and use the MSCI Low Carbon Transition<sup>1</sup> (LCT) score and category to reweight constituents of the Parent Indexes to increase exposure to companies participating in opportunities associated with transition and decrease exposure to companies exposed to risks associated with transition. As a final step, the Indexes are designed to exceed the minimum standards of the EU Climate Transition Benchmark (CTB)<sup>2</sup>. The Indexes apply an *heuristics-based* approach in order to meet the following objectives –

- Reduce the weighted average greenhouse gas intensity by 30% (compared to the underlying investment universe.
- Reduce the weighted average greenhouse gas (GHG) intensity by 7% on an annualized basis
- Reduce the weighted average potential emissions intensity by 30% (compared to the underlying investment universe.
- Have at least equivalent ratio of weighted average "Green Revenues" to weighted average "Fossil fuels-based Revenues" as that of the underlying investment universe<sup>3</sup>

---

<sup>1</sup> Please refer to Appendix II: MSCI Low Carbon Transition Risk Assessment and <https://www.msci.com/climate-change-solutions> for further details regarding the MSCI Low Carbon Transition score and category.

<sup>2</sup> On December 3, 2020, the European Commission has published the delegated acts in the Official Journal ( <https://eur-lex.europa.eu/legal-content/EN/TXT/PDF/?uri=CELEX:32020R1818&from=EN>) which contain the minimum technical requirements for the EU Climate Transition Benchmarks. In case there are changes in the EU delegated acts and an update to the Index methodology is required, MSCI will issue an announcement prior to implementing the changes in the methodology. MSCI will not conduct a formal consultation for such an update.

<sup>3</sup> The Indexes are governed by a set of methodology and policy documents ("Methodology Set"), including the present index methodology document. Please refer to Appendix VII for more details.

## 2 Index Construction Methodology

### 2.1 Eligibility Criteria

The Indexes use company ratings and research provided by MSCI ESG Research<sup>4</sup> to determine eligibility for Index inclusion.

### 2.2 Minimum Requirements

The requirements<sup>5</sup> imposed for the Indexes are detailed in Table 1.

Table 1: Requirements imposed for the MSCI Climate Change Indexes

Requirements	MSCI Climate Change Indexes
<b>Minimum reduction in Weighted Average Scope 1+2+3 Carbon Emissions Intensity (WACI) relative to Parent Index</b>	30%
<b>Minimum reduction in Weighted Average Potential Emissions Intensity relative to Parent Index</b>	30%
<b>Baseline Exclusions</b>	<ul style="list-style-type: none"> <li>• Controversial Weapons</li> <li>• ESG Controversy Score of 0</li> <li>• Tobacco Involvement</li> <li>• Orange Flag Environmental Controversies</li> <li>• Thermal coal mining</li> </ul>
<b>Minimum average reduction (per annum) in WACI relative to WACI in the Base Date<sup>6</sup></b>	7%
<b>Minimum ratio of Green Revenue/ Fossil fuels-based Revenue relative to Parent Index</b>	At least equivalent
<b>Active weight in High Climate Impact Sector relative to Parent Index as defined in Appendix III</b>	0%
<b>Corporate Target Setting</b>	Aims to achieve higher allocation to companies that set carbon reduction targets.

<sup>4</sup> See section 4 for further information regarding ESG and climate data used in the Indexes that MSCI Limited and MSCI Deutschland GmbH source from MSCI ESG Research LLC, a separate subsidiary of MSCI Inc. MSCI ESG Research is solely responsible for the creation, determination and management of such data as a provider to MSCI Limited and MSCI Deutschland GmbH. MSCI Limited and MSCI Deutschland GmbH are the benchmark administrators for the MSCI indexes.

<sup>5</sup> The minimum requirements for EU Climate Transition Benchmarks in the EU Delegated Acts are detailed in Appendix V.

<sup>6</sup> During the November 2022 Semi-Annual Index Review, this condition was not applied for the MSCI China Climate Change Index.

## 2.3 Eligible Universe

The Eligible Universe is constructed from the constituents for the Parent Index by excluding securities based on the exclusion criteria listed below:

- **Controversial Weapons:** Companies involved in Controversial Weapons as defined by the methodology of the MSCI Ex-Controversial Weapons Indexes.
- **ESG Controversies:** All companies assessed as having involvement in ESG controversies that are classified as Red Flags (MSCI ESG Controversy Score of 0). A Red Flag indicates an ongoing, Very Severe ESG controversy implicating a company directly through its actions, products, or operations.
- **Tobacco:** All companies with involvement in Tobacco as defined by the methodology of the MSCI Global ex Tobacco Involvement Indexes.
- **Environmental Harm:** All companies assessed as having involvement in environmental controversies that are classified as Red (MSCI Environmental Controversy Score of 0) or Orange Flags (score of 1).
  - A Red Flag indicates an ongoing, Very Severe ESG controversy implicating a company directly through its actions, products, or operations.
  - An Orange Flag indicates an ongoing Severe ESG controversy implicating a company directly, or a Very Severe ESG controversy that is either partially resolved or indirectly attributed to the company’s actions, products, or operations.
- **Thermal Coal Mining:** All companies deriving 1% or more revenue (either reported or estimated) from the mining of thermal coal (including lignite, bituminous, anthracite and steam coal) and its sale to external parties. It excludes revenue from metallurgical coal, coal mined for internal power generation (e.g. in the case of vertically integrated power producers), intra-company sales of mined thermal coal, and revenue from coal trading (either reported or estimated)

## 2.4 Determination Of Combined Score

Each company in the Eligible Universe is assigned a Combined Score, which is calculated using a company’s LCT Category and its Low Carbon Transition Score as outlined below.

### 2.4.1 Category Tilt Score

The ‘Category Tilt Score’ is used to express relative tilt towards or away from a stock based on the LCT Category. Based on the LCT Category of a company, a Category Tilt Score is assigned based on the table below:

LCT Category	Category Tilt Score
Solutions	3
Neutral	1
Operational Transition	0.667
Product Transition	0.333
Asset Stranding	0.167

### 2.4.2 Relative Tilt Score

The 'Relative Tilt Score' differentiates companies within an LCT Category. Companies with higher LCT Score are determined by MSCI ESG Research to be relatively better at managing their climate related risk compared to their peers with worse LCT Score.

The Relative Tilt Score is calculated by normalizing security level LCT score relative to the maximum<sup>7</sup> LCT Score of the LCT Category within the Parent Index. The 'Relative Tilt Score' is floored at 0.5 to balance its effect on the final weight of index constituents.

$$Relative\ Tilt\ Score = \frac{LCT\ Score}{Maximum^2\ LCT\ Score\ in\ LCT\ Category}$$

### 2.4.3 Combined Score

The Combined Score is calculated for each company as follows:

Combined Score = Category Tilt Score \* Relative Tilt Score.

## 2.5 Weighting Scheme

At each rebalancing, all the securities from the Eligible Universe are weighted by the product of their weight in the Parent Index and the Combined Score.

$$Security\ Weight = Combined\ Score * Weight\ in\ Parent\ Index$$

The above weights are then normalized to 100%.

### 2.5.1 Intermediate Universe

Each security in the Parent Index is classified into one of two climate impact sectors<sup>8</sup> based on its NACE section code. A stock can be assigned to either a 'High Climate Impact' or 'Low Climate Impact' sector. The Eligible Universe is broken into two smaller universes as described below:

#### 2.5.1.1 High Climate Impact Intermediate Universe

High Climate Impact Intermediate Universe is constructed in following two steps –

- Select all securities in the High Climate Impact Sector from the Parent Index.
- Renormalize the weights of securities so that the aggregate weight of securities is equal to the weight of High Climate Impact Sector in the Parent Index.

#### 2.5.1.2 Low Climate Impact Intermediate Universe

Low Climate Impact Intermediate Universe is constructed in following two steps –

- Select all securities in the Low Climate Impact Sector from the Parent Index.

<sup>7</sup> To account for potential outliers within each LCT Category, the category maximum LCT Score is calculated after winsorizing the security level LCT Score at 90<sup>th</sup> percentile of the LCT Category.

<sup>8</sup> For details regarding the Climate Impact Sectors, please refer to Appendix III: Calculation of Target Metrics

- Renormalize the weights of securities so that the aggregate weight of securities is equal to the weight of Low Climate Impact Sector in the Parent Index.

### 2.5.2 Final Universe

The Final Universe is constructed by combining the High Impact Intermediate Universe and the Low Impact Intermediate Universe. The High Impact Sector and Low Impact Sector weights are equal to their respective weights in the Parent Index.

The security weight within the High Impact and Low Impact sectors are in proportion of the security's LCT Category<sup>9</sup>, LCT Score and Carbon Emissions Intensity. Compared to the Parent Index, the Final Universe typically has

- Lower Carbon Footprint
- Higher Green Revenue to Fossil fuels-based Revenue ratio
- Higher weight in companies which set emission reduction targets<sup>10</sup>
- Equal weight in High Impact and Low Impact Sector

### 2.5.3 Capping of Security Weight In Final Universe

The weight of securities in the Final Universe is capped at 5%<sup>11</sup>, with the excess weight being distributed among the remaining securities in the same Climate Impact sector as the security being capped so that the overall weight in the High Impact Sector and Low Impact Sector is unchanged.

### 2.5.4 EU CTB Check

The Final Universe is assessed against the minimum requirements detailed in Table 1. In case the Final Universe is found deficient on any of the minimum requirements, then the weights of the securities in the Final Universe are determined through an iterative process as described in Appendix IV.

## 2.6 Treatment of Unrated Companies

Companies not assessed by MSCI ESG Research on data for any of the following MSCI ESG Research products are not eligible for inclusion in the Indexes:

- MSCI ESG Controversies
- MSCI Climate Change Metrics

For the treatment of unrated companies in the calculation of target metrics, please refer to Appendix III.

<sup>9</sup> For details regarding the LCT Category and LCT Score, please refer to Appendix II: MSCI Low Carbon Transition Risk Assessment.

<sup>10</sup> The assessment of Low Carbon Transition Risk Management is based on policies and commitments to mitigate transition risk, governance structures, risk management programs and initiatives, targets and performance, and involvement in any controversies. Thus, emission reduction targets are considered in the MSCI Low Carbon Transition Assessment, which is used in the reweighting of constituents in the MSCI Climate Change Indexes methodology.

<sup>11</sup> Securities in the Index based on narrow Parent Indexes are capped at the maximum weight in the Parent Index. Narrow Parent Indexes are defined as those indexes for which the maximum market capitalization weight in the Parent Index is more than 10%.



### 3 Maintaining the Indexes

#### 3.1 Semi-Annual Index Reviews

The Indexes are rebalanced on a semi-annual basis, as of the close of the last business day of May and November, coinciding with the May and November Index Review of the MSCI Global Investable Market Indexes. The pro forma Indexes are in general announced nine business days before the effective date.

In general, MSCI uses MSCI ESG Research data (including MSCI ESG Controversies, MSCI Climate Change Metrics and MSCI Business Involvement Screening Research) as of the end of the month preceding the Index Reviews for the rebalancing of the Indexes.

#### 3.2 Ongoing Event Related Changes

The general treatment of corporate events in the Indexes aims to minimize turnover outside of Index Reviews. The methodology aims to appropriately represent an investor’s participation in an event based on relevant deal terms and pre-event weighting of the index constituents that are involved. Further, changes in index market capitalization that occur as a result of corporate event implementation will be offset by a corresponding change in the Variable Weighting Factor (VWF) of the constituent.

Additionally, if the frequency of Index Reviews in the Parent Index is greater than the frequency of Index Reviews in the Index, the changes made to the Parent Index during intermediate Index Reviews will be neutralized in the Index.

The following section briefly describes the treatment of common corporate events within the Index.

No new securities will be added (except where noted below) to the Index between Index Reviews. Parent Index deletions will be reflected simultaneously.

**EVENT TYPE**

**EVENT DETAILS**

**New additions to the Parent Index**

A new security added to the parent index (such as IPO and other early inclusions) will not be added to the index.

**Spin-Offs**

All securities created as a result of the spin-off of an existing Index constituent will be added to the Index at the time of event implementation. Reevaluation for continued inclusion in the Index will occur at the subsequent Index Review.

**Merger/Acquisition**

For Mergers and Acquisitions, the acquirer’s post event weight will account for the proportionate amount of shares involved in deal consideration, while cash proceeds will be invested across the Index.

If an existing Index constituent is acquired by a non-Index constituent, the existing constituent will be

deleted from the Index and the acquiring non-constituent will not be added to the Index.

**Changes in Security Characteristics**

A security will continue to be an Index constituent if there are changes in characteristics (country, sector, size segment, etc.) Reevaluation for continued inclusion in the Index will occur at the subsequent Index Review.

Further detail and illustration regarding specific treatment of corporate events relevant to this Index can be found in the MSCI Corporate Events Methodology book under the sections detailing the treatment of events in Capped Weighted and Non-Market Capitalization Weighted indexes.

The MSCI Corporate Events methodology book is available at: <https://www.msci.com/index-methodology>.

## 4 MSCI ESG Research

The Indexes are products of MSCI Inc. that utilize information such as company ratings and research produced and provided by MSCI ESG Research LLC (MSCI ESG Research), a subsidiary of MSCI Inc. In particular, the Indexes use the following MSCI ESG Research products: MSCI ESG Controversies, MSCI Climate Change Metrics and MSCI ESG Business Involvement Screening Research. MSCI Indexes are administered by MSCI Limited and MSCI Deutschland GmbH.

### 4.1 MSCI ESG Controversies

MSCI ESG Controversies provide assessments of controversies concerning the potential negative environmental, social, and/or governance impact of company operations, products and services. The evaluation framework used in MSCI ESG Controversies is designed to be consistent with international norms represented by the UN Declaration of Human Rights, the ILO Declaration on Fundamental Principles and Rights at Work, and the UN Global Compact. MSCI ESG Controversies Score falls on a 0-10 scale, with “0” being the most severe controversy.

The MSCI ESG Controversies methodology can be found at:

<https://www.msci.com/legal/disclosures/esg-disclosures>

### 4.2 MSCI ESG Business Involvement Screening Research

MSCI ESG Business Involvement Screening Research (BISR) aims to enable institutional investors to manage environmental, social and governance (ESG) standards and restrictions reliably and efficiently.

For more details on MSCI ESG Business Involvement Screening Research, please refer to

<https://www.msci.com/legal/disclosures/esg-disclosures>.

### 4.3 MSCI Climate Change Metrics

MSCI Climate Change Metrics provide climate data & tools to support institutional investors seeking to integrate climate risk & opportunities into their investment strategy and processes. This includes investors seeking to achieve a range of objectives, including measuring and reporting on climate risk exposure, implementing low carbon and fossil fuel-free strategies, alignment with temperature pathways and factoring climate change research into their risk management processes, in particular through climate scenario analysis for both transition and physical risks.

The dataset spans across the four dimensions of a climate strategy: transition risks, green opportunities, physical risks and 1.5° alignment.

For more details on MSCI Climate Change Metrics, please refer to <https://www.msci.com/climate-change-solutions>.

## Appendix I: Companies Involved in Controversial Weapons Business

Companies which meet the following Controversial Weapons criteria are excluded from the Indexes.

- **Cluster Bombs**  
 MSCI ESG Research’s cluster bomb research identifies public companies that are involved in the production of cluster bombs and munitions, or the essential components of these products.
- **Landmines**  
 MSCI ESG Research’s landmines research identifies public companies that are involved in the production of anti - personnel landmines, anti - vehicle landmines, or the essential components of these products.
- **Depleted Uranium Weapons**  
 MSCI ESG Research’s depleted uranium weapons research identifies public companies involved in the production of depleted uranium weapons and armor.
- **Chemical and Biological Weapons**  
 MSCI ESG Research’s chemical and biological weapons research identifies public companies that are involved in the production of chemical and biological weapons, or the essential components of these products.
- **Blinding Laser Weapons**  
 MSCI ESG Research’s blinding laser weapons research identifies public companies that are involved in the production of weapons utilizing laser technology to cause permanent blindness.
- **Non-Detectable Fragments**  
 MSCI ESG Research’s non-detectable fragments research identifies public companies that are involved in the production of weapons that use non-detectable fragments to inflict injury.
- **Incendiary Weapons (White Phosphorus)**  
 MSCI ESG Research’s incendiary weapons research identifies companies that are involved in the production of weapons using white phosphorus.

Involvement criteria:

- Producers of the weapons
- Producers of key components of the weapons (only applies to cluster bombs, landmines, depleted uranium weapons as well as chemical and biological weapons)
- Ownership of 20% or more of a weapons or components producer



- The minimum limit is raised to 50% for financial companies having an ownership in a company that manufactures controversial weapons or key components of controversial weapons
- Owned 50% or more by a company involved in weapons or components production

Revenue limits:

Any identifiable revenues, i.e., zero tolerance.

For details, please refer to MSCI Global ex Controversial Weapons Indexes Methodology at <https://www.msci.com/index/methodology/latest/XCW>.

## Appendix II: MSCI Low Carbon Transition Risk Assessment

MSCI ESG Research’s Low Carbon Transition Risk assessment<sup>12</sup> is designed to identify potential leaders and laggards by measuring companies’ exposure to and management of risks and opportunities related to the low carbon transition. The assessment is derived from company disclosures and estimates.

The final output of this assessment is two company-level factors as described below:

- (1) **Low Carbon Transition Category:** This factor groups companies in five categories that highlight the predominant risks and opportunities they are most likely to face in the transition (Exhibit 1).
- (2) **Low Carbon Transition Score:** This score is based on a multi-dimensional risks and opportunities assessment and considers both primary and secondary risks a company faces. It is an industry agnostic assessment of a company’s position vis-à-vis the transition.

Exhibit 1: Low Carbon Transition Categories and Scores

LOW CARBON TRANSITION SCORE	LOW CARBON TRANSITION CATEGORY		LOW CARBON TRANSITION RISK / OPPORTUNITY	INDUSTRY EXAMPLES
SCORE = 0	ASSET STRANDING		Potential to experience “stranding” of physical / natural assets due to regulatory, market, or technological forces arising from low carbon transition.	Coal mining & coal-based power generation; industries in the Oil & Gas value chain
	TRANSITION	PRODUCT	Reduced demand for carbon-intensive products and services. Leaders and laggards are defined by the ability to shift product portfolio to low-carbon products.	Petrol/diesel-based automobile manufacturers
		OPERATIONAL	Increased operational and/or capital cost due to carbon taxes and/or investment in carbon emission mitigation measures leading to lower profitability of the companies.	Cement, Steel
	NEUTRAL		Limited exposure to low carbon transition carbon risk. Though companies in this category could have exposure to physical risk and/or indirect exposure to low carbon transition risk via lending, investment etc.	Consumer Staples, Healthcare
SCORE = 10	SOLUTIONS		Potential to benefit through the growth of low-carbon products and services.	Renewable electricity, Electric vehicles, Solar cell manufacturers

<sup>12</sup> For more details on MSCI Climate Change Metrics, please refer to <https://www.msci.com/climate-change-solutions>

## Calculation methodology

The Low Carbon Transition Categories and Scores are determined by a combination of each company's current risk exposure and its efforts to manage the risks and opportunities presented by the low carbon transition. The 3-step process followed by MSCI ESG Research is explained below.

### Step 1: Measure Low Carbon Transition Risk Exposure

The first step towards measuring the Low Carbon Transition Risk Exposure for a company is the computation of its estimated total net carbon intensity – which considers operational and product carbon emissions. In the next step, we compute Low Carbon Transition Risk Exposure Category and Score based on total net carbon intensity.

### Step 2: Assess Low Carbon Transition Risk Management

In the second step, MSCI ESG Research assesses a company's management of risks and opportunities presented by the low carbon transition. This assessment is based on policies and commitments to mitigate transition risk, governance structures, risk management programs and initiatives, targets and performance, and involvement in any controversies.

### Step 3: Calculate Low Carbon Transition Category and Score

In the final step, the Low Carbon Transition Risk Exposure Category and Score that was calculated in Step 1 is adjusted for the strength of management efforts. Following this adjustment, Low Carbon Transition Risk Exposure Score of companies with top or second quartile risk management improves and some top and second quartile companies may move up one category.

## Appendix III: Calculation of Target Metrics

### Greenhouse Gas (GHG) Emissions Intensity

MSCI ESG Research collects company-specific direct (Scope 1) and indirect (Scope 2) greenhouse gas emissions (GHG) data from company public documents and/or the Carbon Disclosure Project. If a company does not report GHG emissions, then MSCI ESG Research estimates Scope 1 and Scope 2 GHG emissions.

MSCI ESG Research estimates company-specific indirect (Scope 3) GHG emissions from the Scope 3 Carbon Emissions Estimation Model. The data is generally updated on an annual basis.

### Calculation of GHG Intensity

Carbon emissions of a company are normalized for size by dividing annual carbon emissions by Enterprise Value including Cash (EVIC). The Carbon Emissions Intensity is calculated using the latest Scope 1+2 carbon emissions, Scope 3 carbon emissions and EVIC of a company.

Security Level GHG Intensity (Scope 1+2+3) =

$$(\text{Unadjusted Security Level GHG Intensity (Scope 1+2)} + \text{Unadjusted Security Level GHG Intensity (Scope 3)}) * (1 + \text{EVIAF})$$

Unadjusted Security Level GHG Intensity (Scope 1+2) =

$$\frac{(\text{Scope 1} + 2 \text{ Carbon Emissions})}{\text{EVIC (in M\$)}}$$

If Scope 1+2 carbon emissions and/or EVIC are not available, the average Scope 1+2 intensity of all the constituents of the MSCI ACWI in the same GICS Industry Group in which the security belongs is used.

Unadjusted Security Level GHG Intensity (Scope 3) =

$$\frac{(\text{Scope 3 Carbon Emissions})}{\text{EVIC (in M\$)}}$$

If Scope 3 carbon emissions and/or EVIC are not available, the average Scope 3 intensity of all the constituents of the MSCI ACWI in the same GICS Industry Group in which the security belongs is used.

Enterprise Value Inflation Adjustment Factor (EVIAF)<sup>13</sup> =

$$\left( \frac{\text{Average(EVIC)}}{\text{Previous (Average(EVIC))}} \right) - 1$$

<sup>13</sup> Average Enterprise Value + Cash is calculated for securities in the Eligible Universe



Weighted Average GHG Intensity of Parent Index =

$$\sum (Weight\ in\ Parent\ Index * Security\ Level\ GHG\ Intensity)$$

Weighted Average GHG Intensity of Derived Index =

$$\sum (Index\ Weight * Security\ Level\ GHG\ Intensity)$$

### Calculation of Potential Carbon Emissions Intensity

Security Level Potential Carbon Emissions (PCE) Intensity =

$$\frac{Absolute\ Potential\ Emissions}{EVIC\ (in\ M\$)}$$

If Absolute Potential Emissions data is not available, MSCI uses zero fossil fuel reserves.

Weighted Average Potential Emissions Intensity of Parent Index =

$$\sum (Weight\ in\ Parent\ Index * Security\ Level\ PCE\ Intensity)$$

Weighted Average Potential Emissions Intensity of Derived Index =

$$\sum (Index\ Weight * Security\ Level\ PCE\ Intensity)$$

### Calculation of Average Decarbonization

On average, the Indexes follow a 7% decarbonization trajectory since the Base Date. The Weighted Average Carbon Intensity at the Base Date ( $W_1$ ) is used to compute the target Weighted Average Carbon Intensity at any given Semi-Annual Index Review ( $W_t$ ) as per the below formula.

$$W_t = W_1 * 0.93^{\frac{(t-1)}{2}}$$

Where 't' is the number of Semi-Annual Index Reviews since the Base Date.

Thus, for the 3<sup>rd</sup> Semi-Annual Index Review since the Base Date (t=3), the target Weighted Average Carbon Intensity will be  $W_1 * 0.93$ .

### Climate Impact Sectors

NACE<sup>14</sup> is the European Union's classification of economic activities. As per the draft DA, stocks in the NACE Section codes A, B, C, D, E, F, G, H, L are classified as "High Climate Impact" sector and other stocks are classified 'Low Climate Impact' sector. The GICS Sub-Industry code for each

<sup>14</sup> For further details regarding NACE, please refer to [https://ec.europa.eu/eurostat/statistics-explained/index.php?title=NACE\\_background](https://ec.europa.eu/eurostat/statistics-explained/index.php?title=NACE_background)

security is mapped to the corresponding “Climate Impact Sector” using a mapping. This mapping is constructed in the following steps:

1. MSCI has published a mapping<sup>15</sup> between the NACE classes and GICS Sub-Industry.
2. For each GICS Sub-Industry, the number of NACE classes which fall under the High Climate Impact Sector (say the number of classes is  $N_H$ ) and Low Climate Impact Sector (say the number of classes is  $N_L$ ) is identified
3. If all the NACE classes for a given GICS Sub-Industry are identified in the High Climate Impact Sector ( $N_L = 0$ ), then the GICS Sub-Industry is mapped to the High Climate Impact Sector. Conversely, if all the NACE classes for a given GICS Sub-Industry are identified in the Low Climate Impact Sector ( $N_H = 0$ ) then the GICS Sub-Industry is mapped to the Low Climate Impact Sector
4. In case a GICS Sub-Industry is mapped to some NACE classes in the High Climate Impact Sector and the others in the Low Climate Impact Sector, the GICS Industry is mapped to the Climate Impact Sector in the following manner:
  - a.  **$N_H \geq N_L$** : If the number of NACE classes in the High Climate Impact Sector is at least equivalent to the number of NACE classes in the Low Climate Impact Sector, the GICS Sub-Industry is mapped to the High Climate Impact Sector
  - b.  **$N_H < N_L$** : If the number of NACE classes in the High Climate Impact Sector is less than the number of NACE classes in the Low Climate Impact Sector, the GICS Sub-Industry is mapped to the Low Climate Impact Sector
5. Using the GICS Sub-Industry to Climate Impact Sector mapping created in Step 4, and the security-level GICS Sub-Industry, each security in the Parent Index is classified in either the High Climate Impact Sector or the Low Climate Impact Sector.

### Calculation of Green Revenue to Fossil fuels-based Revenue Multiple

#### Green Revenue

For each constituent in the Parent Index, the Green Revenue% is calculated as the cumulative revenue (%) from the six CleanTech themes which are as follows:

- Alternative Energy – products and services that support the transmission, distribution and generation of renewable energy and alternative fuels to reduce carbon and pollutant emissions in supporting affordable and clean energy to combat climate change.
- Energy Efficiency – products, and services that support the maximization of productivity in labor, transportation, power and domestic applications with minimal energy consumption to ensure universal access to affordable, reliable and modern energy services.
- Sustainable Water – products, services, infrastructure projects and technologies that resolve water scarcity and water quality issues, through minimizing and monitoring current water demand, improving the quality and availability of water supply to improve resource management in both domestic and industrial use.

<sup>15</sup> This mapping is available in the [Handbook of Climate Transition Benchmarks, Paris-Aligned Benchmark and Benchmarks' ESG Disclosures](#). Please note that the mapping does not reflect changes in the GICS structure that were implemented in the MSCI indexes on June 1, 2023.

- Green Building – design, construction, redevelopment, retrofitting, or acquisition of green-certified properties to promote mechanisms for raising capacity for effective climate change mitigation and adaptation.
- Pollution Prevention – products, services, infrastructure projects and technologies that reduces volume of waste materials through recycling, minimizes introduction of toxic substances, and offers remediation of existing contaminants such as heavy metals and organic pollutants in various environmental media to significantly address pollution in all levels and its negative effects
- Sustainable Agriculture - revenues from forest and agricultural products that meet environmental and organic certification requirements to address significantly biodiversity loss, pollution, land disturbance, and water overuse

The Weighted Average Green Revenue% is calculated as:

$$= \sum (Weight\ in\ Index * Green\ Revenue\%)$$

**Fossil fuels-based Revenue**

For each constituent in the Parent Index, the Fossil fuels-based Revenue% is calculated as the cumulative revenue (%) from the following sources:

- Revenue% (either reported or estimated) from the mining of thermal coal (including lignite, bituminous, anthracite and steam coal) and its sale to external parties. It excludes: revenue from metallurgical coal; coal mined for internal power generation (e.g. in the case of vertically integrated power producers); intra-company sales of mined thermal coal; and revenue from coal trading (either reported or estimated)
- Revenue% from the extraction, production and refining of Conventional and Unconventional Oil & Gas. Conventional Oil and Gas includes Arctic onshore/offshore, deepwater, shallow water and other onshore/offshore. Unconventional Oil and Gas includes oil sands, oil shale (kerogen-rich deposits), shale gas, shale oil, coal seam gas, and coal bed methane.
- Revenue% from thermal coal based power generation, liquid fuel based power generation and natural gas based power generation.

The Weighted Average Fossil fuels-based Revenue% is calculated as:

$$= \sum (Weight\ in\ Index * Fossil\ fuels\ based\ Revenue\%)$$

The Green Revenues to Fossil fuels-based Revenues multiple for either the Parent Index or the Index is calculated as a ratio of the Weighted Average Green Revenue to the Weighted Average Fossil fuels-based Revenue as per the formula below:

$$= \frac{Weighted\ Average\ Green\ Revenue\%}{Weighted\ Average\ Fossil\ fuels\ based\ Revenue\%}$$

## Appendix IV: Decarbonization Trajectory of Indexes

The Weighted Average GHG Intensity on the Base Date ( $W_1$ ) is used to compute the target Weighted Average GHG Intensity at any given Semi-Annual Index Review ( $W_t$ ) as per the below formula.

$$W_t = W_1 * 0.93^{\frac{(t-1)}{2}}$$

Where 't' is the number of Semi-Annual Index Reviews since the Base Date. The table below shows the Weighted Average GHG Intensity on the Base Date ( $W_1$ ) for each of the regions where the Indexes are constructed:

Index	Parent Index	Base Date	$W_1$ (tCO <sub>2</sub> /M\$ Enterprise Value + Cash)
MSCI ACWI IMI Climate Change Index	MSCI ACWI IMI Index	May 28, 2021	224.41
MSCI J-Series ACWI IMI Climate Change Index	MSCI J-Series ACWI IMI Index	May 28, 2021	224.65
MSCI ACWI Climate Change Index	MSCI ACWI Index	May 28, 2021	195.56
MSCI J-Series ACWI Climate Change Index	MSCI J-Series ACWI Index	May 28, 2021	195.88
MSCI World Climate Change Index	MSCI World Index	May 28, 2021	182.37
MSCI World ex Australia Climate Change Index	MSCI World ex Australia Index	May 28, 2021	181.59
MSCI World ex Switzerland Climate Change Index	MSCI World ex Switzerland Index	May 28, 2021	181.29
MSCI World ex USA Climate Change Index	MSCI World ex USA Index	May 28, 2021	314.46
MSCI EM (Emerging Markets) Climate Change Index	MSCI EM (Emerging Markets) Index	May 28, 2021	304.40
MSCI J-Series EM (Emerging Markets) Climate Change Index	MSCI J-Series EM (Emerging Markets) Index	May 28, 2021	305.74
MSCI Europe Climate Change Index	MSCI Europe Index	May 28, 2021	269.55
MSCI Europe Small Cap Climate Change Index	MSCI Europe Small Cap Index	May 28, 2021	292.30
MSCI Europe ex UK Climate Change Index	MSCI Europe ex UK Index	May 28, 2021	279.21
MSCI EMU Climate Change Index	MSCI EMU Index	May 28, 2021	337.19
MSCI Nordic Countries IMI Climate Change Index	MSCI Nordic Countries IMI Index	May 28, 2021	218.39
MSCI Nordic Countries Climate Change Index	MSCI Nordic Countries Index	May 28, 2021	223.58

MSCI North America Climate Change Index	MSCI North America Index	May 28, 2021	129.19
MSCI Pacific Climate Change Index	MSCI Pacific Index	May 28, 2021	409.72
MSCI Pacific ex Japan Climate Change Index	MSCI Pacific ex Japan Index	May 28, 2021	182.84
MSCI Australian Shares Climate Change Index	MSCI Australian Shares Index	May 28, 2021	243.86
MSCI Canada IMI Climate Change Index	MSCI Canada IMI Index	May 28, 2021	363.57
MSCI Canada Climate Change Index	MSCI Canada Index	May 28, 2021	303.47
MSCI Denmark IMI Climate Change Index	MSCI Denmark IMI Index	May 28, 2021	100.21
MSCI Japan Climate Change Index	MSCI Japan Index	May 28, 2021	486.03
MSCI Norway IMI Climate Change Index	MSCI Norway IMI Index	May 28, 2021	549.64
MSCI Sweden IMI Climate Change Index	MSCI Sweden IMI Index	May 28, 2021	175.83
MSCI United Kingdom Climate Change Index	MSCI United Kingdom Index	May 28, 2021	262.47
MSCI USA Climate Change Index	MSCI USA Index	May 28, 2021	123.78
MSCI AC Asia Pacific Climate Change Index	MSCI AC Asia Pacific Index	May 28, 2021	333.55
MSCI J-Series AC Asia Pacific Climate Change Index	MSCI J-Series AC Asia Pacific Index	May 28, 2021	334.35
MSCI China Climate Change Index	MSCI China Index	May 28, 2021	350.49
MSCI J-Series China Climate Change Index	MSCI J-Series China Index	May 28, 2021	184.21
MSCI China A Climate Change Index	MSCI China A Index	May 28, 2021	222.36
MSCI J-Series China A Climate Change Index	MSCI J-Series China A Index	May 28, 2021	225.27

## Appendix V: Iterative Process

The iterative down weighting process is applied on the securities of the Final Universe with the objective of meeting all the minimum requirements<sup>16</sup> detailed in Table 1.

### ITERATIVE DOWNWEIGHTING

Starting with the Final Universe, an iterative down weighting process is applied in order to meet with the minimum requirements for the Indexes. The iterative down weighting stops when all the requirements defined in above are met. The steps followed in the iterative downweighting (Exhibit 2) are outlined below:

- Step 1. Check whether all targets for the Index are met. If all targets are met, then no downweighting is required.
- Step 2. Securities in the Applicable Universe are sorted in increasing order of their Scope 1+2+3 Carbon Emissions Intensity and securities in the top half of the sorted list are identified as "Top Half" securities. Securities in the bottom half of the sorted list are identified as "Bottom Half" securities.
- Step 3. If the target based on Minimum reduction in WACI relative to Parent Index and the Minimum average reduction in WACI (per annum) is not met, the lowest ranked "Bottom Half" stock in ascending order of Scope 1+2+3 Carbon Emissions Intensity is selected for downweighting and the weight is reduced by 25% of its weight in the Final Universe. Note that stocks with an LCT Category of Solutions are not eligible for downweighting<sup>17</sup>. If this target is met, but
  - a. If the target based on Weighted Average Potential Emissions Intensity relative to Parent Index is not met, the "Bottom Half" stock with highest Potential Carbon Emissions Intensity is downweighted.
  - b. Otherwise if the target based on Minimum ratio of Green Revenue/ Fossil fuels-based Revenue relative to Parent Index is not met, the "Bottom Half" stock with largest difference between its Fossil fuels-based Revenue% and its Green Revenue% is downweighted
- Step 4. If the targets are still not met, the stock is downweighted in steps of 25% of its weight in the Final Universe till a maximum downweighting of 75%.
- Step 5. Stocks of the Final Universe in the "Top Half", belonging to the same "Climate Impact Sector" as the stock being downweighted are proportionally upweighted to ensure that the overall allocation to the High Climate Impact Sector is the same as that in the Parent Index and the sum of the weights of all constituents is 1.

<sup>16</sup> In the steps detailed for the iterative process, "targets" refers to all the minimum requirements as detailed in Table 1.

<sup>17</sup> This rule was not applied for the MSCI Denmark IMI Climate Change at the time of the May and November 2023 Index Reviews in order to achieve a feasible solution during the rebalancing process.

- Step 6. While upweighting stocks, the security weights of the stocks being upweighted is capped at 5%<sup>18</sup>, with the excess weight being distributed among the remaining securities that are being upweighted.
- Step 7. If the targets are still not met, the iterative process continues and Steps 3-6 are repeated.
- Step 8. If the targets are not met and all “Bottom Half” stocks of the Final Universe are downweighted by 75% of the weight in the Final Universe, Steps 3-7 are repeated, with a maximum downweighting of 90% in a single downweighting step of 15 percentage points of the weight in the Final Universe.
- Step 9. If the targets are not met after the maximum downweighting of 90% of all “Bottom Half” stocks, then stocks are iteratively excluded in the same order as outlined in Step 3.
- Step 10. If the targets are not met after excluding all the “Bottom Half” stocks, then the index will rebalance using the constituents and weighting of stocks as after Step 9.

---

<sup>18</sup> Securities in the Index based on narrow Parent Indexes are capped at the maximum weight in the Parent Index. Narrow Parent Indexes are defined as those indexes for which the maximum market capitalization weight in the Parent Index is more than 10%.

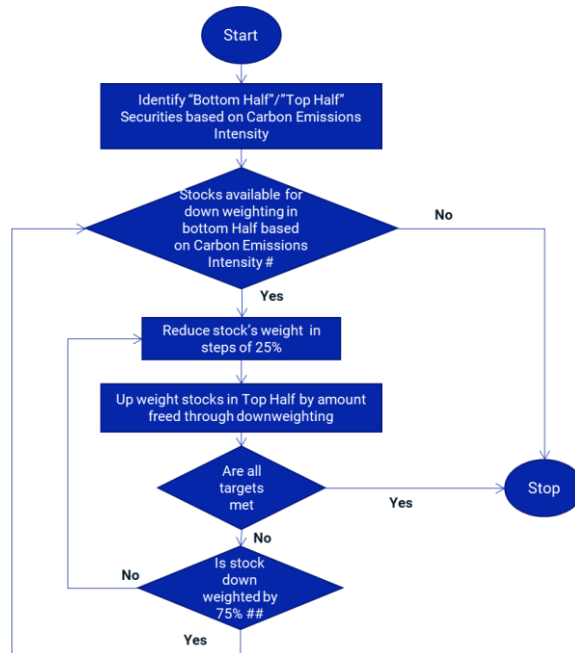


Exhibit 2: Schematic Representation of the Iterative Downweighting Process

# If the target based on Minimum reduction in WACI relative to Parent Index and the Minimum average reduction in WACI (per annum) is met but the target on Weighted Average Potential Emissions Intensity relative to Parent Index is not met, the “Bottom Half” security with the highest Potential Carbon Emissions Intensity is selected for downweighting. If the target on Weighted Average Potential Emissions Intensity relative to Parent Index is also met but the target on Minimum ratio of Green Revenue/ Fossil fuels-based Revenue relative to Parent Index is not met, the “Bottom Half” security with the highest difference in its Fossil fuels-based Revenue% and Green Revenue% is selected for downweighting.

## If the targets are not met and all “Bottom Half” stocks of the Final Universe are downweighted by 75% of the weight in the Final Universe, maximum downweighting is relaxed to 90% in a single downweighting step of 15 percentage points of the weight in the Final Universe.

If the targets are not met after the maximum downweighting of 90% of all “Bottom Half” stocks, then stocks are iteratively excluded in the same order.

If the targets are not met after excluding all the “Bottom Half” stocks then the index will rebalance using the constituents and weighting of stocks at the final step.



## Appendix VI: Minimum Requirements of EU CTB

The below details the minimum requirements of EU CTBs as per the EU Delegated Acts:

### Exclusions

- **Controversial Weapons:** companies involved in any activities related to controversial weapons;
- **Tobacco:** companies involved in the cultivation and production of tobacco
- **Environmental Harm:** companies significantly harm one or more of environmental objectives
- **Controversies:** companies in violation of the United Nations Global Compact (UNGC) principles or the Organisation for Economic Co-operation and Development (OECD) Guidelines for Multinational Enterprises;

### Objectives

- **Relative Reduction:** 30% minimum reduction in Weighted Average Scope 1+2+3 Carbon Emissions Intensity (WACI) relative to Parent Index
- **Self-Decarbonization:** 7% minimum average reduction (per annum) in WACI relative to WACI in the Base Date
- **Exposure Constraint:** At least equivalent exposure to the High Climate Impact Sector relative to Parent Index

## Appendix VII: Methodology Set

The Indexes are governed by a set of methodology and policy documents (“Methodology Set”), including the present index methodology document as mentioned below:

- Description of methodology set – <https://www.msci.com/index/methodology/latest/ReadMe>
- MSCI Corporate Events Methodology – <https://www.msci.com/index/methodology/latest/CE>
- MSCI Fundamental Data Methodology – <https://www.msci.com/index/methodology/latest/FundData>
- MSCI Index Calculation Methodology – <https://www.msci.com/index/methodology/latest/IndexCalc>
- MSCI Index Glossary of Terms – <https://www.msci.com/index/methodology/latest/IndexGlossary>
- MSCI Index Policies – <https://www.msci.com/index/methodology/latest/IndexPolicy>
- MSCI Global Industry Classification Standard (GICS) Methodology – <https://www.msci.com/index/methodology/latest/GICS>
- MSCI Global Investable Market Indexes Methodology – <https://www.msci.com/index/methodology/latest/GIMI>
- MSCI Global ex Controversial Weapons Indexes Methodology – <https://www.msci.com/index/methodology/latest/XCW>
- MSCI Global ex Tobacco Involvement Index – <https://www.msci.com/index/methodology/latest/ExTobacco>
- MSCI Climate Change Indexes Methodology – <https://www.msci.com/index/methodology/latest/ClimateChange>
- ESG Factors In Methodology\*

The Methodology Set for the Indexes can also be accessed from MSCI’s webpage <https://www.msci.com/index-methodology> in the section ‘Search Methodology by Index Name or Index Code’.

\* ‘ESG Factors in Methodology’ contains the list of environmental, social, and governance factors considered, and how they are applied in the methodology (e.g., selection, weighting or exclusion). It can be accessed in the Methodology Set as described above.

## Appendix VIII: Changes to this Document

### The following sections have been modified as of May 2021:

- Introduction – Updated to reflect the additional exclusions and objectives of the index
- Section 3.2 – Added section detailing the minimum requirements imposed on the MSCI Climate Change Indexes
- Section 3.3 – Updated to reflect additional exclusions (ESG Controversies, Environmental Controversies, Tobacco, Thermal Coal Mining)
- Sections 3.5 – Updated to reflect additional steps to meet the minimum requirements of EU CTBs
- Appendix III – Added with calculation details of some of the target objectives.
- Appendix IV – Added with details regarding iterative process
- Appendix V – Added with details regarding minimum requirements of EU Climate Transition Benchmarks

### The following sections have been modified as of November 2022:

- Section 3.3 – Added footnote for a condition that was not applied during the November 2022 Semi-Annual Index Review.

### The following sections have been modified as of May 2023:

- Section 1: Added footnote on Methodology Set
- Section 2.3: Clarified the exclusion criteria for companies involved in ESG Controversies
- Section 3: Updated to reflect the transition of the MSCI Global Investable Market Indexes (GIMI) to Quarterly Comprehensive Index Reviews (all references to “Semi-Annual Index Reviews” and “Quarterly Index Reviews” of the MSCI GIMI were replaced with “Index Reviews”)
- Section 4: Moved that section after the Section 3 (Maintaining the Indexes)
- Appendix IV – Added footnote for a condition that was not applied during the May 2023 Index Review.

### The following sections have been modified as of November 2023:

- Section 2.6 – New section detailing the treatment of companies with ratings and research not available from MSCI ESG Research
- Appendix III – Updated to reflect the treatment of companies with ratings and research not available from MSCI ESG Research
- Appendix III – Updated the calculation of GHG Intensity to reflect the missing data treatment for Scope 1+2, Scope 3 and EVIC.
- Appendix III – Updated references on NACE and GICS mapping
- Appendix III – The calculation of Potential Emissions was clarified.

- Appendix IV – Updated footnote for a condition that was not applied during the November 2023 Index Review.

**The following sections have been modified as of January 2024:**

- Appendix IV – Added details on the decarbonization trajectory of the Indexes
- Appendix VII – Added details on the Methodology Set for the Indexes

**The following sections have been modified as of July 2024:**

Section 4 MSCI ESG Research

- Updated language and links for ESG Research Products

Appendix II: MSCI Low Carbon Transition Risk Assessment

- Updated language and the Low Carbon Transition Categories and Scores table.

## Contact us

[msci.com/contact-us](https://www.msci.com/contact-us)

### AMERICAS

United States	+ 1 888 588 4567 *
Canada	+ 1 416 687 6270
Brazil	+ 55 11 4040 7830
Mexico	+ 52 81 1253 4020

### EUROPE, MIDDLE EAST & AFRICA

South Africa	+ 27 21 673 0103
Germany	+ 49 69 133 859 00
Switzerland	+ 41 22 817 9777
United Kingdom	+ 44 20 7618 2222
Italy	+ 39 02 5849 0415
France	+ 33 17 6769 810

### ASIA PACIFIC

China	+ 86 21 61326611
Hong Kong	+ 852 2844 9333
India	+ 91 22 6784 9160
Malaysia	1800818185 *
South Korea	+ 82 70 4769 4231
Singapore	+ 65 67011177
Australia	+ 612 9033 9333
Taiwan	008 0112 7513 *
Thailand	0018 0015 6207 7181 *
Japan	+ 81 3 4579 0333

\* toll-free

### About MSCI

MSCI is a leading provider of critical decision support tools and services for the global investment community. With over 50 years of expertise in research, data and technology, we power better investment decisions by enabling clients to understand and analyze key drivers of risk and return and confidently build more effective portfolios. We create industry-leading research-enhanced solutions that clients use to gain insight into and improve transparency across the investment process.

To learn more, please visit [www.msci.com](https://www.msci.com).

The process for submitting a formal index complaint can be found on the index regulation page of MSCI's website at: <https://www.msci.com/index-regulation>.

## Notice and disclaimer

This document is research for informational purposes only and is intended for institutional professionals with the analytical resources and tools necessary to interpret any performance information. Nothing herein is intended to promote or recommend any product, tool or service.

This document and all of the information contained in it, including without limitation all text, data, graphs, charts (collectively, the "Information") is the property of MSCI Inc. or its subsidiaries (collectively, "MSCI"), or MSCI's licensors, direct or indirect suppliers or any third party involved in making or compiling any Information (collectively, with MSCI, the "Information Providers") and is provided for informational purposes only. The Information may not be modified, reverse-engineered, reproduced or disseminated in whole or in part without prior written permission from MSCI. All rights in the Information are reserved by MSCI and/or its Information Providers.

The Information may not be used to create derivative works or to verify or correct other data or information. For example (but without limitation), the Information may not be used to create indexes, databases, risk models, analytics, software, or in connection with the issuing, offering, sponsoring, managing or marketing of any securities, portfolios, financial products or other investment vehicles utilizing or based on, linked to, tracking or otherwise derived from the Information or any other MSCI data, information, products or services.

The user of the Information assumes the entire risk of any use it may make or permit to be made of the Information. NONE OF THE INFORMATION PROVIDERS MAKES ANY EXPRESS OR IMPLIED WARRANTIES OR REPRESENTATIONS WITH RESPECT TO THE INFORMATION (OR THE RESULTS TO BE OBTAINED BY THE USE THEREOF), AND TO THE MAXIMUM EXTENT PERMITTED BY APPLICABLE LAW, EACH INFORMATION PROVIDER EXPRESSLY DISCLAIMS ALL IMPLIED WARRANTIES (INCLUDING, WITHOUT LIMITATION, ANY IMPLIED WARRANTIES OF ORIGINALITY, ACCURACY, TIMELINESS, NON-INFRINGEMENT, COMPLETENESS, MERCHANTABILITY AND FITNESS FOR A PARTICULAR PURPOSE) WITH RESPECT TO ANY OF THE INFORMATION.

Without limiting any of the foregoing and to the maximum extent permitted by applicable law, in no event shall any Information Provider have any liability regarding any of the Information for any direct, indirect, special, punitive, consequential (including lost profits) or any other damages even if notified of the possibility of such damages. The foregoing shall not exclude or limit any liability that may not be by applicable law be excluded or limited, including without limitation (as applicable), any liability for death or personal injury to the extent that such injury results from the negligence or willful default of itself, its servants, agents or sub-contractors.

Information containing any historical information, data or analysis should not be taken as an indication or guarantee of any future performance, analysis, forecast or prediction. Past performance does not guarantee future results.

The Information may include "Signals," defined as quantitative attributes or the product of methods or formulas that describe or are derived from calculations using historical data. Neither these Signals nor any description of historical data are intended to provide investment advice or a recommendation to make (or refrain from making) any investment decision or asset allocation and should not be relied upon as such. Signals are inherently backward-looking because of their use of historical data, and they are not intended to predict the future. The relevance, correlations and accuracy of Signals frequently will change materially.

The Information should not be relied on and is not a substitute for the skill, judgment and experience of the user, its management, employees, advisors and/or clients when making investment and other business decisions. All Information is impersonal and not tailored to the needs of any person, entity or group of persons.

None of the Information constitutes an offer to sell (or a solicitation of an offer to buy), any security, financial product or other investment vehicle or any trading strategy.

It is not possible to invest directly in an index. Exposure to an asset class or trading strategy or other category represented by an index is only available through third party investable instruments (if any) based on that index. MSCI does not issue, sponsor, endorse, market, offer, review or otherwise express any opinion regarding any fund, ETF, derivative or other security, investment, financial product or trading strategy that is based on, linked to or seeks to provide an investment return related to the performance of any MSCI index (collectively, "Index Linked Investments"). MSCI makes no assurance that any Index Linked Investments will accurately track index performance or provide positive investment returns. MSCI Inc. is not an investment adviser or fiduciary and MSCI makes no representation regarding the advisability of investing in any Index Linked Investments.

Index returns do not represent the results of actual trading of investible assets/securities. MSCI maintains and calculates indexes, but does not manage actual assets. The calculation of indexes and index returns may deviate from the stated methodology. Index returns do not reflect payment of any sales charges or fees an investor may pay to purchase the securities underlying the index or Index Linked Investments. The imposition of these fees and charges would cause the performance of an Index Linked Investment to be different than the MSCI index performance.

The Information may contain back tested data. Back-tested performance is not actual performance, but is hypothetical. There are frequently material differences between back tested performance results and actual results subsequently achieved by any investment strategy.

Constituents of MSCI equity indexes are listed companies, which are included in or excluded from the indexes according to the application of the relevant index methodologies. Accordingly, constituents in MSCI equity indexes may include MSCI Inc., clients of MSCI or suppliers to MSCI. Inclusion of a security within an MSCI index is not a recommendation by MSCI to buy, sell, or hold such security, nor is it considered to be investment advice.

Data and information produced by various affiliates of MSCI Inc., including MSCI ESG Research LLC and Barra LLC, may be used in calculating certain MSCI indexes. More information can be found in the relevant index methodologies on [www.msci.com](http://www.msci.com).

MSCI receives compensation in connection with licensing its indexes to third parties. MSCI Inc.'s revenue includes fees based on assets in Index Linked Investments. Information can be found in MSCI Inc.'s company filings on the Investor Relations section of [msci.com](http://msci.com).

MSCI ESG Research LLC is a Registered Investment Adviser under the Investment Advisers Act of 1940 and a subsidiary of MSCI Inc. Neither MSCI nor any of its products or services recommends, endorses, approves or otherwise expresses any opinion regarding any issuer, securities, financial products or instruments or trading strategies and MSCI's products or services are not a recommendation to make (or refrain from making) any kind of investment decision and may not be relied on as such, provided that applicable products or services from MSCI ESG Research may constitute investment advice. MSCI ESG Research materials, including materials utilized in any MSCI ESG Indexes or other products, have not been submitted to, nor received approval from, the United States Securities and Exchange Commission or any other regulatory body. MSCI ESG and climate ratings, research and data are produced by MSCI ESG Research LLC, a subsidiary of MSCI Inc. MSCI ESG Indexes, Analytics and Real Estate are products of MSCI Inc. that utilize information from MSCI ESG Research LLC. MSCI Indexes are administered by MSCI Limited (UK) and MSCI Deutschland GmbH.

Please note that the issuers mentioned in MSCI ESG Research materials sometimes have commercial relationships with MSCI ESG Research and/or MSCI Inc. (collectively, "MSCI") and that these relationships create potential conflicts of interest. In some cases, the issuers or their affiliates purchase research or other products or services from one or more MSCI affiliates. In other cases, MSCI ESG Research rates financial products such as mutual funds or ETFs that are managed by MSCI's clients or their affiliates, or are based on MSCI Inc. Indexes. In addition, constituents in MSCI Inc. equity indexes include companies that subscribe to MSCI products or services. In some cases, MSCI clients pay fees based in whole or part on the assets they manage. MSCI ESG Research has taken a number of steps to mitigate potential conflicts of interest and safeguard the integrity and independence of its research and ratings. More information about these conflict mitigation measures is available in our Form ADV, available at <https://adviserinfo.sec.gov/firm/summary/169222>.

Any use of or access to products, services or information of MSCI requires a license from MSCI. MSCI, Barra, RiskMetrics, IPD and other MSCI brands and product names are the trademarks, service marks, or registered trademarks of MSCI or its subsidiaries in the United States and other jurisdictions. The Global Industry Classification Standard (GICS) was developed by and is the exclusive property of MSCI and S&P Global Market Intelligence. "Global Industry Classification Standard (GICS)" is a service mark of MSCI and S&P Global Market Intelligence.

MIFID2/MIFIR notice: MSCI ESG Research LLC does not distribute or act as an intermediary for financial instruments or structured deposits, nor does it deal on its own account, provide execution services for others or manage client accounts. No MSCI ESG Research product or service supports, promotes or is intended to support or promote any such activity. MSCI ESG Research is an independent provider of ESG data.

Privacy notice: For information about how MSCI collects and uses personal data, please refer to our Privacy Notice at <https://www.msci.com/privacy-pledge>.