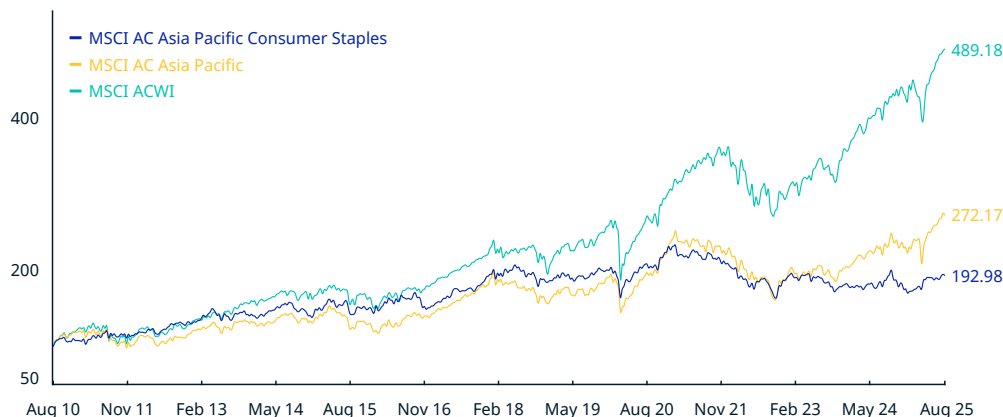


MSCI AC Asia Pacific Consumer Staples Index (USD)

The MSCI AC Asia Pacific Consumer Staples Index includes large and mid-cap securities across 5 Developed Markets countries* and 8 Emerging Markets countries* in the Asia Pacific region. All securities in the index are classified in the Consumer Staples sector as per the Global Industry Classification Standard (GICS®).

For a complete description of the index methodology, please see [Index methodology - MSCI](#).

CUMULATIVE INDEX PERFORMANCE – GROSS RETURNS (USD) (AUG 2010 – AUG 2025)



ANNUAL PERFORMANCE (%)

Year	MSCI AC Asia Pacific Consumer Staples	MSCI AC Asia Pacific	MSCI ACWI
2024	-5.62	10.01	18.02
2023	-1.44	11.81	22.81
2022	-10.04	-16.92	-17.96
2021	-7.99	-1.19	19.04
2020	14.01	20.07	16.82
2019	6.81	19.74	27.30
2018	-3.12	-13.25	-8.93
2017	27.88	32.04	24.62
2016	-1.59	5.21	8.48
2015	8.73	-1.68	-1.84
2014	-0.92	0.29	4.71
2013	9.62	12.19	23.44
2012	14.11	17.05	16.80
2011	2.94	-14.92	-6.86

INDEX PERFORMANCE – GROSS RETURNS (%) (AUG 29, 2025)

					ANNUALIZED			
	1 Mo	3 Mo	1 Yr	YTD	3 Yr	5 Yr	10 Yr	Since Dec 30, 1994
MSCI AC Asia Pacific Consumer Staples	3.11	2.18	2.72	10.26	1.35	-1.49	2.66	4.22
MSCI AC Asia Pacific	3.24	9.07	16.41	18.57	13.11	6.89	7.83	4.11
MSCI ACWI	2.51	8.64	16.33	14.67	18.22	12.52	11.66	8.49

FUNDAMENTALS (AUG 29, 2025)

Div Yld (%)	P/E	P/E Fwd	P/BV
2.47	24.84	20.36	2.75
2.28	17.47	15.17	1.91
1.75	22.55	19.04	3.43

INDEX RISK AND RETURN CHARACTERISTICS (AUG 29, 2025)

	Turnover (%) ¹	ANNUALIZED STD DEV (%) ²			SHARPE RATIO ^{2,3}			Since Dec 30, 1994	MAXIMUM DRAWDOWN	
		3 Yr	5 Yr	10 Yr	3 Yr	5 Yr	10 Yr		(%)	Period YYYY-MM-DD
MSCI AC Asia Pacific Consumer Staples	3.49	14.91	13.86	12.43	-0.15	-0.25	0.10	0.17	44.14	2007-12-11–2009-03-09
MSCI AC Asia Pacific	3.90	16.08	14.86	14.57	0.56	0.33	0.45	0.17	57.63	2007-11-01–2009-03-09
MSCI ACWI	2.51	14.10	15.10	14.71	0.93	0.67	0.68	0.44	58.06	2007-10-31–2009-03-09

¹ Last 12 months

² Based on monthly gross returns data

³ Based on NY FED Overnight SOFR from Sep 1 2021 & on ICE LIBOR 1M prior that date

MSCI AC Asia Pacific Consumer Staples Index (USD)

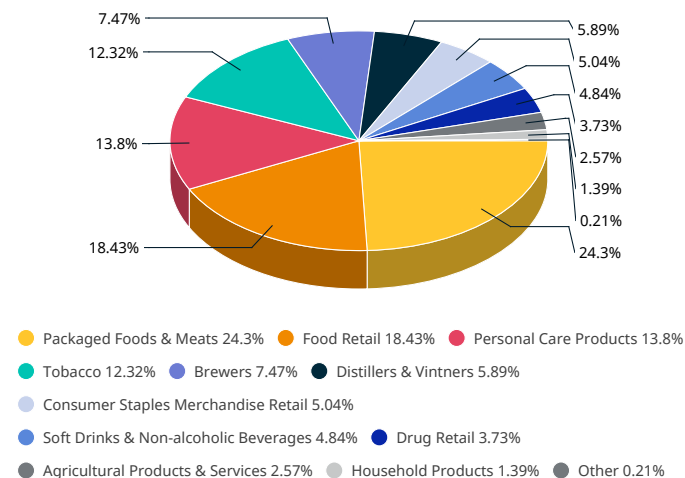
INDEX CHARACTERISTICS

MSCI AC Asia Pacific Consumer Staples	
Number of Constituents	85
Mkt Cap (USD Millions)	
Index	537,722.76
Largest	38,315.00
Smallest	242.46
Average	6,326.15
Median	3,952.40

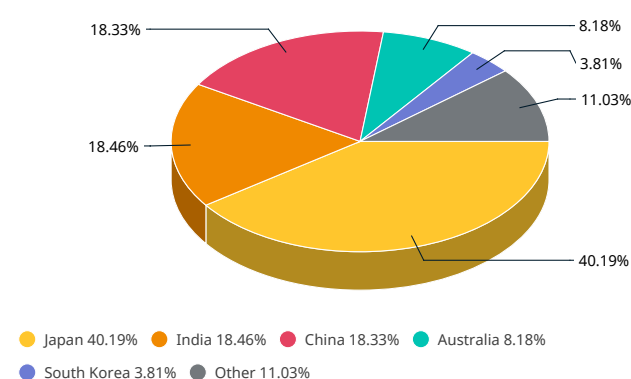
TOP 10 CONSTITUENTS

	Country	Float Adj Mkt Cap (USD Billions)	Index Wt. (%)
JAPAN TOBACCO	JP	38.32	7.13
SEVEN & I HOLDINGS CO	JP	27.16	5.05
AEON CO	JP	27.10	5.04
HINDUSTAN UNILEVER	IN	24.79	4.61
AJINOMOTO CO	JP	24.71	4.60
WOOLWORTHS GROUP	AU	23.03	4.28
KAO CORP	JP	21.27	3.96
COLES	AU	20.96	3.90
ASAHI GROUP HOLDINGS	JP	18.27	3.40
KWEICHOW MOUTAI A (HK-C)	CN	15.66	2.91
Total		241.27	44.87

SUB-INDUSTRY WEIGHTS



COUNTRY WEIGHTS



* Developed Markets countries in the index include: Australia, Hong Kong, Japan, New Zealand and Singapore. Emerging Markets countries include: China, India, Indonesia, Korea, Malaysia, the Philippines, Taiwan and Thailand.

The MSCI AC Asia Pacific Consumer Staples Index was launched on Sep 15, 1999. Data prior to the launch date is back-tested test (i.e. calculations of how the index might have performed over that time period had the index existed). There are frequently material differences between back-tested performance and actual results. Past performance – whether actual or back-tested – is no indication or guarantee of future performance.

ABOUT MSCI

MSCI is a leading provider of critical decision support tools and services for the global investment community. With over 50 years of expertise in research, data and technology, we power better investment decisions by enabling clients to understand and analyze key drivers of risk and return and confidently build more effective portfolios. We create industry-leading research-enhanced solutions that clients use to gain insight into and improve transparency across the investment process. To learn more, please visit www.msci.com.

The information contained herein (the "Information") may not be reproduced or disseminated in whole or in part without prior written permission from MSCI. The Information may not be used to verify or correct other data, to create any derivative works, to create indexes, risk models, or analytics, or in connection with issuing, offering, sponsoring, managing or marketing any securities, portfolios, financial products or other investment vehicles. Historical data and analysis should not be taken as an indication or guarantee of any future performance, analysis, forecast or prediction. None of the Information or MSCI index or other product or service constitutes an offer to buy or sell, or a promotion or recommendation of, any security, financial instrument or product or trading strategy. Further, none of the Information or any MSCI index is intended to constitute investment advice or a recommendation to make (or refrain from making) any kind of investment decision and may not be relied on as such. MSCI ESG and climate ratings, research and data are produced by MSCI ESG Research LLC, a subsidiary of MSCI Inc. MSCI ESG Indexes, Analytics and Real Estate are products of MSCI Inc. that utilize information from MSCI ESG Research LLC. MSCI Indexes are administered by MSCI Limited (UK) and MSCI Deutschland GmbH. The Information is provided "as is" and the user of the Information assumes the entire risk of any use it may make or permit to be made of the Information. NONE OF MSCI INC. OR ANY OF ITS SUBSIDIARIES OR ITS OR THEIR DIRECT OR INDIRECT SUPPLIERS OR ANY THIRD PARTY INVOLVED IN MAKING OR COMPILING THE INFORMATION (EACH, AN "INFORMATION PROVIDER") MAKES ANY WARRANTIES OR REPRESENTATIONS AND, TO THE MAXIMUM EXTENT PERMITTED BY LAW, EACH INFORMATION PROVIDER HEREBY EXPRESSLY DISCLAIMS ALL IMPLIED WARRANTIES, INCLUDING WARRANTIES OF MERCHANTABILITY AND FITNESS FOR A PARTICULAR PURPOSE. WITHOUT LIMITING ANY OF THE FOREGOING AND TO THE MAXIMUM EXTENT PERMITTED BY LAW, IN NO EVENT SHALL ANY OF THE INFORMATION PROVIDERS HAVE ANY LIABILITY REGARDING ANY OF THE INFORMATION FOR ANY DIRECT, INDIRECT, SPECIAL, PUNITIVE, CONSEQUENTIAL (INCLUDING LOST PROFITS) OR ANY OTHER DAMAGES EVEN IF NOTIFIED OF THE POSSIBILITY OF SUCH DAMAGES. The foregoing shall not exclude or limit any liability that may not be by applicable law be excluded or limited. Privacy notice: For information about how MSCI collects and uses personal data, please refer to our Privacy Notice at www.msci.com/legal/privacy-notice

© 2025 MSCI Inc. All rights reserved.

