

MSCI ACWI IMI Resilient Future Select 35/20 Capped Index Methodology

May 2025

Contents

1	INTRODUCTION	4
2	CONSTRUCTING THE MSCI ACWI IMI RESILIENT FUTURE SELECT 35/20 CAPPED INDEX	5
2.1	Eligible Universe	5
2.1.1	ESG-based Screening	5
2.1.2	Treatment of Unrated Companies.....	6
2.1.3	GICS® Sub-industry filter	6
2.1.4	Return on Equity (ROE) Filter	6
2.2	Selected Universe.....	6
2.3	Weighting Scheme	9
2.3.1	Security Weighting.....	9
2.3.2	Issuer Capping.....	9
3	MAINTAINING THE MSCI ACWI IMI RESILIENT FUTURE SELECT 35/20 CAPPED INDEX	10
3.1	Index Review.....	10
3.2	Ongoing Event-Related Maintenance	10
4	MSCI ESG RESEARCH	13
4.1	MSCI Impact Solutions: Sustainable Impact Metrics	13
4.2	MSCI Impact Solutions: SDG Alignment	14
4.3	MSCI ESG Controversies	14
4.4	MSCI ESG Business Involvement Screening Research.....	14
4.5	MSCI Climate Change Metrics	15
	APPENDIX I: KEY ENVIRONMENTAL THEMES	16
	APPENDIX II: ESG EXCLUSION CRITERIA	17

**APPENDIX III: THEMATIC FRAMEWORK FOR CONSTRUCTING THE BATTERIES AND EV
VALUE CHAIN, SMART GRIDS, FUTURE FUELS & TECHNOLOGY, ALTERNATIVE FOOD &
AGRICULTURE COMPONENTS21**

 Selection Rules for each thematic component 21

 GICS Sector and Sub-industry filter 21

APPENDIX IV: METHODOLOGY SET23

APPENDIX V: CHANGES TO THIS DOCUMENT24

1 INTRODUCTION

The MSCI ACWI IMI Resilient Future Select 35/20 Capped Index (the ‘Index’¹) aims to represent the performance of a set of companies that are associated with the development of environmental solutions (see Appendix I) focused on one or more of the following components:

- Clean Energy Solutions
 - Alternative Energy
 - Hydro-power Generation (>25MW)
 - Batteries and EV Value Chain
 - Smart Grids
 - Future Fuels and Technology
- Alternative Food & Agriculture
- Water Solutions
- Natural Capital Protection

¹ The Index is governed by a set of methodology and policy documents (“Methodology Set”), including the present index methodology document. Please refer to Appendix IV for more details.

2 CONSTRUCTING THE MSCI ACWI IMI RESILIENT FUTURE SELECT 35/20 CAPPED INDEX

The Index is constructed by selecting securities from the underlying MSCI ACWI IMI Index (the “Parent Index”).

2.1 Eligible Universe

2.1.1 ESG-based Screening²

The Index uses MSCI ESG Controversies, MSCI ESG Business Involvement Screening Research, MSCI Climate Change Metrics, and MSCI Impact Solutions’ SDG Alignment to apply a set of exclusions screens that aim to address headline risks and/or reduce negative impact from select business activities. The Index also applies the exclusions listed in Section 2.3 of the MSCI EU CTB/PAB Overlay Indexes Methodology³ to reflect the Article 12(1)a-g requirements as per the EU Low Carbon Benchmarks Regulation. The exclusions are based on the following criteria:

ESG Controversy-based Criteria

- ESG Controversies Score
- Environmental Controversies Score

Business Involvement-based Criteria

- Controversial Weapons
- Civilian Firearms
- Tobacco
- Thermal Coal
- Thermal Coal Power Generation
- Unconventional Oil & Gas Extraction
- Arctic Oil & Gas Extraction
- Palm Oil

² See section 4 for further information regarding ESG and climate data used in the Index that MSCI Limited and MSCI Deutschland GmbH source from MSCI ESG Research LLC, a separate subsidiary of MSCI Inc. MSCI ESG Research is solely responsible for the creation, determination and management of such data as a provider to MSCI Limited and MSCI Deutschland GmbH. MSCI Limited and MSCI Deutschland GmbH are the benchmark administrators for the MSCI indexes.

³ For More details, please refer to the MSCI EU CTB/PAB Overlay Indexes Methodology <https://www.msci.com/index/methodology/latest/MSCI EU CTB/PAB Overlay>

- Oil & Gas Activities
- Fossil Fuel Power Generation

SDG Criteria

- SDG Net Alignment

See Appendix II for more details on these exclusions criteria.

2.1.2 Treatment of Unrated Companies

- Companies that are not assessed on MSCI ESG Research's ESG Controversies or Environmental Controversies are excluded from the Eligible Universe.
- Companies that are not assessed on MSCI ESG Research's SDG Alignment are not excluded from the Eligible Universe.

2.1.3 GICS^{®4} Sub-industry filter

Securities mapped to the following GICS sub-industry are excluded from the Eligible Universe.

No.	GICS Sector	GICS Sub-industry
1	Utilities	Water Utilities

2.1.4 Return on Equity (ROE) Filter

Securities that belong to the bottom 5% of the Parent Index when ranked by their ROE⁵ in the descending order are excluded from the Eligible Universe. When securities have the same ROE, they are ranked by their weight in the Parent Index in descending order. Securities which are missing ROE are also excluded from the Eligible Universe.

2.2 Selected Universe

The Index is constructed by combining securities from the following components. Securities selected from each component are combined to form the Selected Universe⁶.

⁴ GICS[®], the Global Industry Classification Standard, jointly developed by MSCI Inc. and S&P Global Market Intelligence.

⁵ For more details on the ROE, please refer to the MSCI Fundamental Data Methodology at <https://www.msci.com/index/methodology/latest/FundData>.

⁶ It is possible that one security is selected in more than one component. In such cases, the security is processed in the Selected Universe with the weighting defined in Section 2.3.

- **Alternative Energy:** Securities are selected if they have reported or estimated revenue of 25% or more from Alternative Energy

This component aims to capture securities that are associated with products, services, or infrastructure projects supporting the development of renewable energy and alternative fuels, as defined by MSCI Sustainable Impact Metrics.

- **Hydro-power Generation (>25MW):** Securities are selected if they have reported or estimated revenue of 25% or more from Hydro-power Generation, as defined by MSCI Climate Change Metrics.

- **Batteries and EV Value Chain:** Securities are selected if their Batteries and EV Value Chain Relevance Score is $\geq 50\%$

This component aims to capture securities that are associated with the development of new products and services focused on the battery and electric vehicle value chain, as defined by the MSCI Thematic Relevance Score Methodology⁷. Business activities in scope include the following:

- Electro-chemical energy storage technologies,
- Mining companies that produce metals used to manufacture batteries,
- Electric vehicles (“EVs”), EV components and materials.

- **Smart Grids:** Securities are selected if their Smart Grids Relevance Score is $\geq 50\%$

This component aims to capture securities that are associated with the development of new products and services focused on enabling two-way flow of data and electric power, as defined by the MSCI Thematic Relevance Score Methodology. Business activities in scope include the following:

- Grid and energy management, including microgrids,
- Smart metering.

- **Future Fuels & Technology:** Securities are selected if their Future Fuel & Technology Relevance Score is $\geq 50\%$

This component aims to capture securities that are associated with the development of new products and services focused on future sources of energy and technologies for conduit industries, as defined by the MSCI

⁷ For details of calculation of Relevance Scores, please refer to the MSCI Thematic Relevance Score Methodology document at <https://www.msci.com/index/methodology/latest/ThemRelevScore>

Thematic Relevance Score Methodology. Business activities in scope include the following:

- Hydrogen fuel value chain,
- Concentrated Solar Power (CSP),
- Ground source heating.

- **Alternative Food & Agriculture:** Securities are selected if their Alternative Food & Agriculture Relevance Score $\geq 50\%$

This component aims to capture securities that are associated with the development of new products and services focused on improving the way food is produced and consumed, as defined by the MSCI Thematic Relevance Score Methodology. Business activities in scope include the following:

- Plant-based meat substitutes,
- Insect-based protein,
- Agricultural technology,
- Responsible farming.

- **Water Solutions:** Securities are selected if they either (1) have reported or estimated revenue of 25% or more from Sustainable Water, or (2) have a Water Business Segment Relevance Score⁸ of $\geq 50\%$ and has reported or estimated revenue of 5% or more from Sustainable Water.

This component aims to capture securities that are associated with products, services, and projects that attempt to resolve water scarcity and water quality issues, categorized as Sustainable Water under MSCI Sustainable Impact Metrics; or companies associated with water-related business activities⁹, such as water supply, water treatment, and water related equipment.

- **Natural Capital Protection:** Securities are selected if they have reported or estimated revenue of 25% or more from Natural Capital Protection.

This component aims to capture securities that are associated with products, services, or projects that support pollution prevention, waste minimization, or

⁸ For details of this methodology, please refer to <https://www.msci.com/index/methodology/latest/ACWIWater>

⁹ This component captures similar business activities to the ACWI IMI Water Index but uses two of the four selection routes of the aforementioned index. In particular, the Index 1) selects securities using the Sustainable Water revenue and Business Segment Relevance Score routes, and 2) applies different thresholds. The index methodology can be found at <https://www.msci.com/index/methodology/latest/ACWIWater>.

recycling as a means of alleviating the burden of unsustainable waste generation, as defined by MSCI Sustainable Impact Metrics.

Please refer to Appendix III for the details on the construction of the Thematic components, including the Relevance Score calculation, of the Batteries and EV Value Chain, Smart Grids, Future Fuels and Technology, Alternative Food & Agriculture components.

2.3 Weighting Scheme

2.3.1 Security Weighting

Securities included in the Index are weighted in proportion to their weight in the Parent Index. The weights are then normalized to 100%.

2.3.2 Issuer Capping

The maximum weight of the largest issuer is capped at 35% while the maximum weights of all other issuers are capped at 20% in accordance with the MSCI Capped Indexes methodology¹⁰. An absolute buffer of 1%¹¹ is applied on these limits. The constituent weights are checked on a daily basis, and the Index is rebalanced, if these pre-determined thresholds are breached.

¹⁰ Please refer to the MSCI Capped Indexes methodology at <https://www.msci.com/index/methodology/latest/Capped>.

¹¹ With an absolute buffer of 1%, the maximum weight of the largest issuer is capped at 34%, and the maximum weights of all other issuers are capped at 19%.

3 MAINTAINING THE MSCI ACWI IMI RESILIENT FUTURE SELECT35/20 CAPPED INDEX

3.1 Index Review

The Index is reviewed on a semi-annual basis, as of the close of the last business day of May and November, coinciding with the May and November Index Reviews of the Parent Index, and the changes are implemented at the end of May and November. In general, the pro forma index is announced nine business days before the effective date.

In general, MSCI uses MSCI ESG Research data (including MSCI Impact Solutions, MSCI ESG Ratings, MSCI ESG Controversies, MSCI ESG Business Involvement Screening Research, and MSCI Climate Change Metrics) as of the end of the month preceding the Index Reviews. For some securities, such data may not be published by MSCI ESG Research by the end of the month preceding the Index Review. For such securities, MSCI will use ESG data published after the end of month, when available. This approach aims to capture timely updates to ESG Ratings of the constituents and coincides with the rebalancing of the relevant MSCI Parent Index.

In addition, MSCI uses Relevance Score data as of two business days prior to the rebalancing date for the Semi-Annual Index Review.

3.2 Ongoing Event-Related Maintenance

The general treatment of corporate events in the Index aims to minimize turnover outside of Index Reviews. The methodology aims to appropriately represent an investor's participation in an event based on relevant deal terms and pre-event weighting of the index constituents that are involved.

The following section briefly describes the treatment of common corporate events within the Index.

No new securities will be added (except where noted below) to the Index between Index Reviews. Parent Index deletions will be reflected simultaneously.

There are no deletions from the Index between Index Reviews on account of a security becoming ineligible because of reduced Component revenue or relevance score falling below the threshold, decrease in MSCI ESG Controversies Score, change in SDG Alignment assessment, and/or change in business involvement.

EVENT TYPE

EVENT DETAILS

New additions to the Parent Index A new security added to the Parent Index (such as IPO and other early inclusions) will not be added to the index.

Spin-Offs All securities created as a result of the spin-off of an existing Index constituent will not be added to the Index at the time of event implementation. Reevaluation for addition in the Index will occur at the subsequent Index Review.

Merger/Acquisition For Mergers and Acquisitions, the acquirer's post event weight will account for the proportionate amount of shares involved in deal consideration, while cash proceeds will be invested across the Index.

If an existing Index constituent is acquired by a non-Index constituent, the existing constituent will be deleted from the Index and the acquiring non-constituent will not be added to the Index.

Changes in Security Characteristics A security will continue to be an Index constituent if there are changes in characteristics (country, sector, size segment, etc.). Reevaluation for continued inclusion in the Index will occur at the subsequent Index Review.

Further detail and illustration regarding specific treatment of corporate events relevant to this Index can be found in the MSCI Corporate Events Methodology.



The MSCI Corporate Events methodology book is available at:

<https://www.msci.com/index-methodology>.

4 MSCI ESG RESEARCH

The Indexes are products of MSCI Inc. that utilize information such as company ratings and research produced and provided by MSCI ESG Research LLC (MSCI ESG Research), a subsidiary of MSCI Inc. In particular, the Index uses the following MSCI ESG Research products: MSCI Impact Solutions, MSCI ESG Controversies, MSCI ESG Business Involvement Screening Research, and MSCI Climate Change Metrics. MSCI Indexes are administered by MSCI Limited and MSCI Deutschland GmbH.

4.1 MSCI Impact Solutions: Sustainable Impact Metrics

MSCI Impact Solutions' Sustainable Impact Metrics is designed to identify companies that derive revenue from products or services with positive impact on society and the environment. The Sustainable Impact Metrics are comprised of six Environmental Impact categories and seven Social Impact categories arranged by theme.

MSCI Sustainable Impact Taxonomy

Pillar	Themes	Categories
Environmental Impact	Climate Change	1. Alternative energy 2. Energy efficiency 3. Green building
	Natural capital	4. Sustainable water 5. Pollution prevention 6. Sustainable agriculture
Social Impact	Basic needs	7. Nutrition 8. Major Disease Treatment 9. Sanitation 10. Affordable Real Estate
	Empowerment	11. SME Finance 12. Education 13. Connectivity – Digital divide

Under each of the actionable environmental and social impact themes, MSCI ESG Research has identified specific categories of products and services that it has determined companies can offer as potential solutions to environmental and social challenges.

For more details on MSCI Sustainable Impact Metrics, please refer to <https://www.msci.com/legal/disclosures/esg-disclosures>.

4.2 MSCI Impact Solutions: SDG Alignment

MSCI Impact Solutions' SDG Alignment is designed to provide a holistic view of companies' net contribution – both positive and negative – towards addressing each of the 17 UN Sustainable Development Goals (SDGs). SDG Alignment assessments and scores include analysis of companies' operations, products and services, policies, and practices and their net contribution – positive and adverse – to addressing key global challenges.

The MSCI SDG Alignment framework provides 17 SDG Net Alignment scores and 17 SDG Net Alignment assessments (including Strongly Aligned, Aligned, Neutral, Misaligned and Strongly Misaligned) for each of the 17 global goals. In addition, the model offers assessments and scores for two dimensions, product alignment and operation alignment, for each company and for each of the 17 goals.

The MSCI SDG Alignment methodology can be found at:
<https://www.msci.com/legal/disclosures/esg-disclosures>.

4.3 MSCI ESG Controversies

MSCI ESG Controversies provides assessments of controversies concerning the potential negative environmental, social, and/or governance impact of company operations, products and services. The evaluation framework used in MSCI ESG Controversies is designed to be consistent with international norms represented by the UN Declaration of Human Rights, the ILO Declaration on Fundamental Principles and Rights at Work, and the UN Global Compact. MSCI ESG Controversies Score falls on a 0-10 scale, with "0" being the most severe controversy.

The MSCI ESG Controversies methodology can be found at:
<https://www.msci.com/legal/disclosures/esg-disclosures>.

4.4 MSCI ESG Business Involvement Screening Research

MSCI ESG Business Involvement Screening Research (BISR) aims to enable institutional investors to manage environmental, social and governance (ESG) standards and restrictions reliably and efficiently.

The MSCI Business Involvement Screening Research methodology can be found at:
<https://www.msci.com/legal/disclosures/esg-disclosures>.

4.5 MSCI Climate Change Metrics

MSCI Climate Change Metrics provides climate data and tools to support institutional investors seeking to integrate climate risk and opportunities into their investment strategy and processes. This includes investors seeking to achieve a range of objectives, including measuring and reporting on climate risk exposure, implementing low carbon and fossil fuel-free strategies, alignment with temperature pathways and factoring climate change research into their risk management processes, in particular through climate scenario analysis for both transition and physical risks.

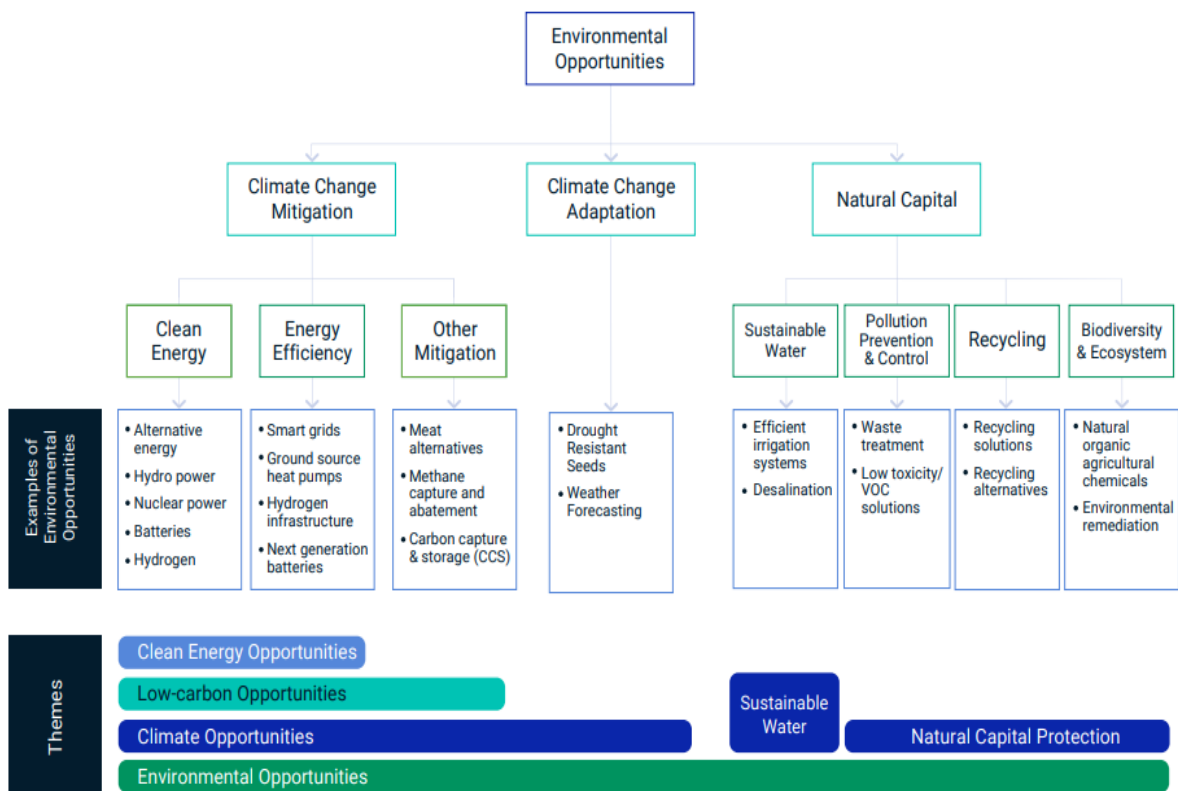
The dataset spans across the four dimensions of a climate strategy: transition risks, green opportunities, physical risks and 1.5° alignment.

- **Fossil Fuels and Power Generation Metrics**

MSCI ESG Research identifies companies involved in fossil fuel-related assets and activities including fossil fuel reserves, resource extraction, power generation and generation capacity, revenue from such assets and activities and capital investments in such assets and activities. The metrics are based on disclosed activities, disclosed revenue and estimates of revenue that are extrapolated from company disclosures and eligible third-party sources (such as NGOs).

For more details on MSCI Climate Change Metrics, please refer to <https://www.msci.com/legal/disclosures/climate-disclosures>

APPENDIX I: KEY ENVIRONMENTAL THEMES



Environmental solutions could play a critical role in building a more environmentally resilient future by potentially reducing the likelihood of crossing irreversible environmental tipping points, such as significant climate change, groundwater depletion or biodiversity loss. These solutions contribute to any of the identified eight environmental opportunity themes (clean energy, energy efficiency, other mitigation, adaptation, sustainable water, pollution prevention and control, recycling, and biodiversity and ecosystem).

For more information, please see the Resilient Future Theme Insight “Leveraging Environmental Opportunities for a Resilient Future” available at <https://www.msci.com/documents/1296102/40643940/Thematic-Resilient+Future-cbr-en.pdf/39628773-f551-e6d6-554e-9aa796cb4bb2?t=1716248563010>.

APPENDIX II: ESG EXCLUSION CRITERIA

Companies are excluded based on the following MSCI ESG Controversies, MSCI Business Involvement Screening Research, MSCI Climate Change Metrics, and MSCI SDG Alignment filters:

ESG CONTROVERSY-BASED CRITERIA

- **ESG Controversies Score**
 - All companies assessed as having involvement in ESG controversies that are classified as Red Flags (MSCI ESG Controversy Score of 0) . A Red Flag indicates an ongoing, Very Severe ESG controversy implicating a company directly through its actions, products, or operations.
- **Environmental Controversies Score**
 - All companies assessed as having involvement in environmental controversies that are classified as Red Flags (MSCI Environmental Controversy Score of 0) or Orange Flags (score of 1)
 - A Red Flag indicates an ongoing, Very Severe ESG controversy implicating a company directly through its actions, products, or operations.
 - An Orange Flag indicates an ongoing Severe ESG controversy implicating a company directly, or a Very Severe ESG controversy that is either partially resolved or indirectly attributed to the company's actions, products, or operations.

BUSINESS INVOLVEMENT-BASED CRITERIA

- **Controversial Weapons**
 - All companies with any tie to Controversial Weapons (cluster munitions, landmines, depleted uranium weapons, biological/chemical weapons, blinding lasers, non-detectable fragments and incendiary weapons), as defined by the methodology of the MSCI Ex-Controversial Weapons Indexes available at <https://www.msci.com/index-methodology>.
- **Civilian Firearms**

- All companies classified as “Producer” of firearms and small arms ammunitions for civilian markets. It does not cover companies that cater to the military, government, and law enforcement markets.
- All companies deriving 5% or more aggregate revenue from the production and distribution (wholesale or retail) of firearms or small arms ammunition intended for civilian use.
- **Tobacco**
 - All companies that manufacture tobacco products which include cigars, blunts, cigarettes, e-cigarettes, inhalers, kreteks, smokeless tobacco, snuff, snus, dissolvable and chewing tobacco. This category also covers companies that grow or process raw tobacco leaves.
 - All companies deriving 5% or more aggregate revenue from the production, distribution, retail, supply and licensing of tobacco-related products.
- **Thermal Coal**
 - Thermal Coal Mining: All companies deriving 1% or more revenue (either reported or estimated) from the mining of thermal coal (including lignite, bituminous, anthracite and steam coal) and its sale to external parties. It does not cover revenue from metallurgical coal; coal mined for internal power generation (e.g., in the case of vertically integrated power producers); intra-company sales of mined thermal coal; and revenue from coal trading.
 - Thermal Coal Distribution: All companies with evidence of thermal coal distribution or transport involvement. This includes transport of thermal coal by road, rail, shipping or air, and physical trading of thermal coal. It does not include involvement in storage of thermal coal, or involvement in metallurgical coal-related activities.
- **Thermal Coal Power Generation**
 - All companies deriving 5% or more revenue (either reported or estimated) from thermal coal-based power generation, except if they derive 50% or more aggregate revenue from Alternative Energy, Hydro-power Generation, Sustainable Water, and Natural Capital Protection.
- **Unconventional Oil & Gas Extraction**

- All companies deriving 5% or more revenue (either reported or estimated) from oil sands, oil shale (kerogen-rich deposits), shale gas, shale oil, coal-seam gas, and coal-bed methane. It does not cover all types of conventional oil and gas production including Arctic onshore/offshore, deep water, shallow water and other onshore/offshore.
- **Arctic Oil & Gas Extraction**
 - All companies deriving 5% or more revenue (either reported or estimated) from arctic oil and arctic gas production. The definition of Arctic is geographical and includes production activities north of the 66.5 latitude. This covers offshore or onshore oil and gas production.
- **Palm Oil**
 - All companies deriving 5% or more aggregate revenue from the production or distribution of palm oil products.
- **Oil & Gas Activities**
 - All companies deriving 10% or more aggregate revenue from oil and gas related activities, including distribution / retail, equipment and services, extraction and production, pipelines and transportation and refining but excluding biofuel production and sales and trading activities.
- **Fossil Fuel Power Generation**
 - All companies deriving 50% or more aggregate revenue from thermal coal based power generation, liquid fuel based power generation and natural gas based power generation¹².

SDG CRITERIA

- **SDG Net Alignment**

¹² As per https://www.ipcc.ch/site/assets/uploads/2018/02/ipcc_wg3_ar5_chapter7.pdf, thermal coal based power generation, liquid fuel based power generation and natural gas based power generation have median lifecycle emissions exceeding 100gCO2/kWh.

- All companies that are assessed as Strongly Misaligned on their Net Alignment to any of the selected SDGs, in particular, SDG 6, 7, 9, 12, 13, 14, or 15¹³

Notes on Unrated Securities or Securities with Missing Coverage:

- Companies that are not assessed on MSCI ESG Research's ESG Controversies or Environmental Controversies are excluded from the Eligible Universe.
- Companies that are not assessed on MSCI ESG Research's SDG Alignment are not excluded from the Eligible Universe.

¹³ SDGs 6, 7, 9, 12, 13, 14, and 15 refer to seven of the 17 United Nations Sustainable Development Goals, as part of the 2030 Agenda for Sustainable Development that are specifically focused on environmental themes. SDG 6 aims to ensure availability and sustainable management of water and sanitation for all (<https://sdgs.un.org/goals/goal6>); SDG 7 aims to ensure access to affordable, reliable, sustainable and modern energy for all (<https://sdgs.un.org/goals/goal7>); SDG 9 aims to build resilient infrastructure, promote inclusive and sustainable industrialization and foster innovation (<https://sdgs.un.org/goals/goal9>); SDG 12 aims to ensure sustainable consumption and production patterns (<https://sdgs.un.org/goals/goal12>); SDG 13 aims to Take urgent action to combat climate change and its impacts (<https://sdgs.un.org/goals/goal13>); SDG 14 aims to conserve and sustainably use the oceans, seas and marine resources for sustainable development (<https://sdgs.un.org/goals/goal14>); and SDG 15 aims to protect, restore and promote sustainable use of terrestrial ecosystems, sustainably manage forests, combat desertification, and halt and reverse land degradation and halt biodiversity loss (<https://sdgs.un.org/goals/goal15>)

APPENDIX III: THEMATIC FRAMEWORK FOR CONSTRUCTING THE BATTERIES AND EV VALUE CHAIN, SMART GRIDS, FUTURE FUELS & TECHNOLOGY, ALTERNATIVE FOOD & AGRICULTURE COMPONENTS

Selection Rules for each thematic component

Securities from the Parent Index that have a Relevance Score of 50% or more are included in the thematic component. For details of calculation of Relevance Scores, please refer to the MSCI Thematic Relevance Score Methodology document¹⁴. The business activities in scope of the theme are as defined in Section 2.2.

Further filtering is applied to each thematic component as detailed below.

GICS Sector and Sub-industry filter

Securities in the corresponding component mapped to the following GICS sub-industries are excluded from each thematic component.

Batteries and EV Value Chain Component

No	GICS Sector	GICS Sub-industry
1	Energy	<ul style="list-style-type: none"> Oil & Gas Equipment & Services Oil & Gas Refining & Marketing
2	Industrials	<ul style="list-style-type: none"> Marine Transportation Marine Ports & Services Heavy Electrical Equipment
3	Information Technology	<ul style="list-style-type: none"> Application Software Semiconductor Materials & Equipment
4	Communication Services	<ul style="list-style-type: none"> Advertising Broadcasting Cable & Satellite Publishing Movies & Entertainment Interactive Home Entertainment Interactive Media & Services

¹⁴ Please see <https://www.msci.com/index/methodology/latest/ThemRelevScore>

5	Utilities	<ul style="list-style-type: none"> Independent Power Producers & Energy Traders
---	-----------	--

Smart Grids Component

No	GICS Sector	GICS Sub-industry
1	Consumer Staples	<ul style="list-style-type: none"> All Sub Industries
2	Healthcare	<ul style="list-style-type: none"> All Sub Industries
3	Consumer Discretionary	<ul style="list-style-type: none"> All Sub Industries
4	Industrials	<ul style="list-style-type: none"> Construction Machinery & Heavy Transportation Equipment Commercial Printing Office Services & Supplies Data Processing & Outsourced Services
5	Information Technology	<ul style="list-style-type: none"> IT Consulting & Other Services
6	Materials	<ul style="list-style-type: none"> Construction Materials
7	Financials	<ul style="list-style-type: none"> Transaction Payment Processing Services

Alternative Food & Agriculture Component

No	GICS Sector	GICS Sub-industry
1	Consumer Staples	<ul style="list-style-type: none"> Personal Care Products

APPENDIX IV: METHODOLOGY SET

The Index is governed by a set of methodology and policy documents (“Methodology Set”), including the present index methodology document as mentioned below:

- Description of methodology set – www.msci.com/index/methodology/latest/ReadMe
- MSCI Corporate Events Methodology – www.msci.com/index/methodology/latest/CE
- MSCI Fundamental Data Methodology – www.msci.com/index/methodology/latest/FundData
- MSCI Index Calculation Methodology – www.msci.com/index/methodology/latest/IndexCalc
- MSCI Index Glossary of Terms – www.msci.com/index/methodology/latest/IndexGlossary
- MSCI Index Policies – www.msci.com/index/methodology/latest/IndexPolicy
- MSCI Global Industry Classification Standard (GICS) Methodology – www.msci.com/index/methodology/latest/GICS
- MSCI Global Investable Market Indexes Methodology – www.msci.com/index/methodology/latest/GIMI
- ESG Factors In Methodology¹⁵
- Thematic Relevance Score Methodology – <https://www.msci.com/index/methodology/latest/ThemRelevScore>
- MSCI ACWI IMI Sustainable Impact Indexes Methodology – www.msci.com/index/methodology/latest/SI
- MSCI Capped Indexes Methodology – <https://www.msci.com/index/methodology/latest/Capped>

The Methodology Set for the Index can also be accessed from MSCI’s webpage <https://www.msci.com/index-methodology> in the section ‘Search Methodology by Index Name or Index Code’.

¹⁵ ‘ESG Factors in Methodology’ contains the list of environmental, social, and governance factors considered, and how they are applied in the methodology (e.g., selection, weighting or exclusion). It can be accessed in the Methodology Set as described above.

APPENDIX V: CHANGES TO THIS DOCUMENT

The following sections have been modified as of May 2025:

Section 2.1 and Appendix II

- Clarified definition of exclusion criteria for Oil & Gas Activities and Fossil Fuel Power Generation.
- Added a thermal coal distribution screen and combined it with the thermal coal mining screen under Thermal Coal.

Contact us

[msci.com/contact-us](https://www.msci.com/contact-us)

AMERICAS

United States + 1 888 588 4567 *
Canada + 1 416 687 6270
Brazil + 55 11 4040 7830
Mexico + 52 81 1253 4020

EUROPE, MIDDLE EAST & AFRICA

South Africa + 27 21 673 0103
Germany + 49 69 133 859 00
Switzerland + 41 22 817 9777
United Kingdom + 44 20 7618 2222
Italy + 39 02 5849 0415
France + 33 17 6769 810

ASIA PACIFIC

China + 86 21 61326611
Hong Kong + 852 2844 9333
India + 91 22 6784 9160
Malaysia 1800818185 *
South Korea + 82 70 4769 4231
Singapore + 65 67011177
Australia + 612 9033 9333
Taiwan 008 0112 7513 *
Thailand 0018 0015 6207 7181 *
Japan + 81 3 4579 0333

* toll-free

About MSCI

MSCI is a leading provider of critical decision support tools and services for the global investment community. With over 50 years of expertise in research, data and technology, we power better investment decisions by enabling clients to understand and analyze key drivers of risk and return and confidently build more effective portfolios. We create industry-leading research-enhanced solutions that clients use to gain insight into and improve transparency across the investment process.

To learn more, please visit www.msci.com.

The process for submitting a formal index complaint can be found on the index regulation page of MSCI's website at: <https://www.msci.com/index-regulation>.

Notice and disclaimer

This document and all of the information contained in it, including without limitation all text, data, graphs, charts (collectively, the "Information") is the property of MSCI Inc. or its subsidiaries (collectively, "MSCI"), or MSCI's licensors, direct or indirect suppliers or any third party involved in making or compiling any Information (collectively, with MSCI, the "Information Providers") and is provided for informational purposes only. The Information may not be modified, reverse-engineered, reproduced or redisseminated in whole or in part without prior written permission from MSCI. All rights in the Information are reserved by MSCI and/or its Information Providers.

The Information may not be used to create derivative works or to verify or correct other data or information. For example (but without limitation), the Information may not be used to create indexes, databases, risk models, analytics, software, or in connection with the issuing, offering, sponsoring, managing or marketing of any securities, portfolios, financial products or other investment vehicles utilizing or based on, linked to, tracking or otherwise derived from the Information or any other MSCI data, information, products or services.

The user of the Information assumes the entire risk of any use it may make or permit to be made of the Information. NONE OF THE INFORMATION PROVIDERS MAKES ANY EXPRESS OR IMPLIED WARRANTIES OR REPRESENTATIONS WITH RESPECT TO THE INFORMATION (OR THE RESULTS TO BE OBTAINED BY THE USE THEREOF), AND TO THE MAXIMUM EXTENT PERMITTED BY APPLICABLE LAW, EACH INFORMATION PROVIDER EXPRESSLY DISCLAIMS ALL IMPLIED WARRANTIES (INCLUDING, WITHOUT LIMITATION, ANY IMPLIED WARRANTIES OF ORIGINALITY, ACCURACY, TIMELINESS, NON-INFRINGEMENT, COMPLETENESS, MERCHANTABILITY AND FITNESS FOR A PARTICULAR PURPOSE) WITH RESPECT TO ANY OF THE INFORMATION.

Without limiting any of the foregoing and to the maximum extent permitted by applicable law, in no event shall any Information Provider have any liability regarding any of the Information for any direct, indirect, special, punitive, consequential (including lost profits) or any other damages even if notified of the possibility of such damages. The foregoing shall not exclude or limit any liability that may not by applicable law be excluded or limited, including without limitation (as applicable), any liability for death or personal injury to the extent that such injury results from the negligence or willful default of itself, its servants, agents or sub-contractors.

Information containing any historical information, data or analysis should not be taken as an indication or guarantee of any future performance, analysis, forecast or prediction. Past performance does not guarantee future results.

The Information may include "Signals," defined as quantitative attributes or the product of methods or formulas that describe or are derived from calculations using historical data. Neither these Signals nor any description of historical data are intended to provide investment advice or a recommendation to make (or refrain from making) any investment decision or asset allocation and should not be relied upon as such. Signals are inherently backward-looking because of their use of historical data, and they are not intended to predict the future. The relevance, correlations and accuracy of Signals frequently will change materially.

The Information should not be relied on and is not a substitute for the skill, judgment and experience of the user, its management, employees, advisors and/or clients when making investment and other business decisions. All Information is impersonal and not tailored to the needs of any person, entity or group of persons.

None of the Information constitutes an offer to sell (or a solicitation of an offer to buy), any security, financial product or other investment vehicle or any trading strategy.

It is not possible to invest directly in an index. Exposure to an asset class or trading strategy or other category represented by an index is only available through third party investable instruments (if any) based on that index. MSCI does not issue, sponsor, endorse, market, offer, review or otherwise express any opinion regarding any fund, ETF, derivative or other security, investment, financial product or trading strategy that is based on, linked to or seeks to provide an investment return related to the performance of any MSCI index (collectively, "Index Linked Investments"). MSCI makes no assurance that any Index Linked Investments will accurately track index performance or provide positive investment returns. MSCI Inc. is not an investment adviser or fiduciary and MSCI makes no representation regarding the advisability of investing in any Index Linked Investments.

Index returns do not represent the results of actual trading of investible assets/securities. MSCI maintains and calculates indexes, but does not manage actual assets. The calculation of indexes and index returns may deviate from the stated methodology. Index returns do not reflect payment of any sales charges or fees an investor may pay to purchase the securities underlying the index or Index Linked Investments. The imposition of these fees and charges would cause the performance of an Index Linked Investment to be different than the MSCI index performance.

The Information may contain back tested data. Back-tested performance is not actual performance, but is hypothetical. There are frequently material differences between back tested performance results and actual results subsequently achieved by any investment strategy.

Constituents of MSCI equity indexes are listed companies, which are included in or excluded from the indexes according to the application of the relevant index methodologies. Accordingly, constituents in MSCI equity indexes may include MSCI Inc., clients of MSCI or suppliers to MSCI. Inclusion of a security within an MSCI index is not a recommendation by MSCI to buy, sell, or hold such security, nor is it considered to be investment advice.

Data and information produced by various affiliates of MSCI Inc., including MSCI ESG Research LLC and Barra LLC, may be used in calculating certain MSCI indexes. More information can be found in the relevant index methodologies on www.msci.com.

MSCI receives compensation in connection with licensing its indexes to third parties. MSCI Inc.'s revenue includes fees based on assets in Index Linked Investments. Information can be found in MSCI Inc.'s company filings on the Investor Relations section of msci.com.

MSCI ESG Research LLC is a Registered Investment Adviser under the Investment Advisers Act of 1940 and a subsidiary of MSCI Inc. Neither MSCI nor any of its products or services recommends, endorses, approves or otherwise expresses any opinion regarding any issuer, securities, financial products or instruments or trading strategies and MSCI's products or services are not a recommendation to make (or refrain from making) any kind of investment decision and may not be relied on as such, provided that applicable products or services from MSCI ESG Research may constitute investment advice. MSCI ESG Research materials, including materials utilized in any MSCI ESG Indexes or other products, have not been submitted to, nor received approval from, the United States Securities and Exchange Commission or any other regulatory body. MSCI ESG and climate ratings, research and data are produced by MSCI ESG Research LLC, a subsidiary of MSCI Inc. MSCI ESG Indexes, Analytics and Real Estate are products of MSCI Inc. that utilize information from MSCI ESG Research LLC. MSCI Indexes are administered by MSCI Limited (UK) and MSCI Deutschland GmbH.

Please note that the issuers mentioned in MSCI ESG Research materials sometimes have commercial relationships with MSCI ESG Research and/or MSCI Inc. (collectively, "MSCI") and that these relationships create potential conflicts of interest. In some cases, the issuers or their affiliates purchase research or other products or services from one or more MSCI affiliates. In other cases, MSCI ESG Research rates financial products such as mutual funds or ETFs that are managed by MSCI's clients or their affiliates, or are based on MSCI Inc. Indexes. In addition, constituents in MSCI Inc. equity indexes include companies that subscribe to MSCI products or services. In some cases, MSCI clients pay fees based in whole or part on the assets they manage. MSCI ESG Research has taken a number of steps to mitigate potential conflicts of interest and safeguard the integrity and independence of its research and ratings. More information about these conflict mitigation measures is available in our Form ADV, available at <https://adviserinfo.sec.gov/firm/summary/169222>.

Any use of or access to products, services or information of MSCI requires a license from MSCI. MSCI, Barra, RiskMetrics, IPD and other MSCI brands and product names are the trademarks, service marks, or registered trademarks of MSCI or its subsidiaries in the United States and other jurisdictions. The Global Industry Classification Standard (GICS) was developed by and is the exclusive property of MSCI and S&P Dow Jones Indices. "Global Industry Classification Standard (GICS)" is a service mark of MSCI and S&P Dow Jones Indices.

MIFID2/MIFIR notice: MSCI ESG Research LLC does not distribute or act as an intermediary for financial instruments or structured deposits, nor does it deal on its own account, provide execution services for others or manage client accounts. No MSCI ESG Research product or service supports, promotes or is intended to support or promote any such activity. MSCI ESG Research is an independent provider of ESG data.

Privacy notice: For information about how MSCI collects and uses personal data, please refer to our Privacy Notice at <https://www.msci.com/privacy-pledge>.