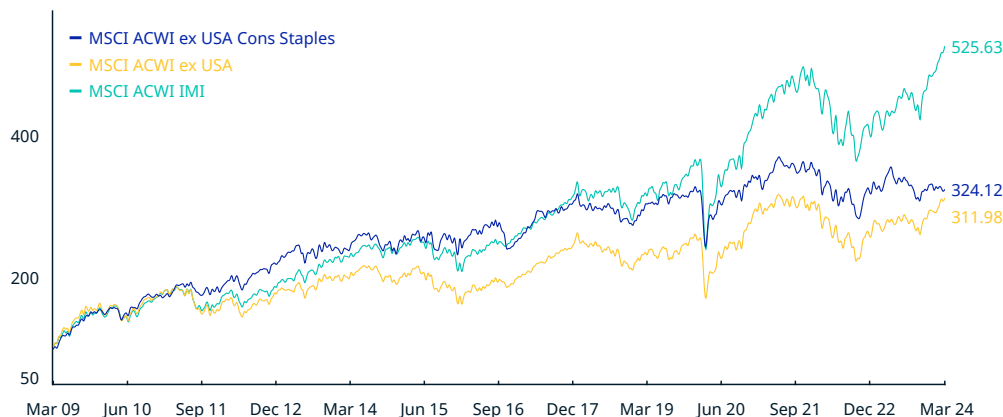


# MSCI ACWI ex USA Consumer Staples Index (USD)

The MSCI ACWI ex USA Consumer Staples Index includes large and mid cap securities across 22 of 23 Developed Markets (DM) countries (excluding the US) and 24 Emerging Markets (EM) countries. All securities in the index are classified in the Consumer Staples as per the Global Industry Classification Standard (GICS®).

For a complete description of the index methodology, please see [Index methodology - MSCI](#).

## CUMULATIVE INDEX PERFORMANCE – NET RETURNS (USD) (MAR 2009 – MAR 2024)



## ANNUAL PERFORMANCE (%)

Year	MSCI ACWI ex USA Cons Staples	MSCI ACWI ex USA	MSCI ACWI IMI
2023	4.91	15.62	21.58
2022	-11.90	-16.00	-18.40
2021	5.28	7.82	18.22
2020	6.69	10.65	16.25
2019	17.54	21.51	26.35
2018	-11.15	-14.20	-10.08
2017	23.95	27.19	23.95
2016	-1.94	4.50	8.36
2015	5.03	-5.66	-2.19
2014	-1.94	-3.87	3.84
2013	12.59	15.29	23.55
2012	18.91	16.83	16.38
2011	3.48	-13.71	-7.89
2010	15.35	11.15	14.35

## INDEX PERFORMANCE – NET RETURNS (%) (MAR 29, 2024)

					ANNUALIZED			
	1 Mo	3 Mo	1 Yr	YTD	3 Yr	5 Yr	10 Yr	Since Dec 29, 2000
MSCI ACWI ex USA Cons Staples	0.43	-3.16	-4.64	-3.16	-1.14	1.23	2.74	6.81
MSCI ACWI ex USA	3.13	4.69	13.26	4.69	1.94	5.97	4.25	4.89
MSCI ACWI IMI	3.16	7.72	22.45	7.72	6.31	10.57	8.43	6.64

## FUNDAMENTALS (MAR 29, 2024)

Div Yld (%)	P/E	P/E Fwd	P/BV
2.86	19.10	17.00	3.04
2.92	15.72	13.65	1.87
1.94	21.32	17.62	2.84

## INDEX RISK AND RETURN CHARACTERISTICS (MAR 29, 2024)

	Turnover (%) <sup>1</sup>	ANNUALIZED STD DEV (%) <sup>2</sup>			SHARPE RATIO <sup>2,3</sup>			Since Dec 29, 2000	MAXIMUM DRAWDOWN	
		3 Yr	5 Yr	10 Yr	3 Yr	5 Yr	10 Yr		(%)	Period YYYY-MM-DD
MSCI ACWI ex USA Cons Staples	3.01	13.52	13.45	12.24	-0.21	0.01	0.16	0.43	46.55	2007-12-10–2009-03-09
MSCI ACWI ex USA	3.52	16.42	17.58	15.01	0.04	0.30	0.26	0.26	60.83	2007-10-31–2009-03-09
MSCI ACWI IMI	2.51	16.72	18.06	14.96	0.30	0.54	0.52	0.37	58.59	2007-10-31–2009-03-09

<sup>1</sup> Last 12 months

<sup>2</sup> Based on monthly net returns data

<sup>3</sup> Based on NY FED Overnight SOFR from Sep 1 2021 & on ICE LIBOR 1M prior that date

## MSCI ACWI ex USA Consumer Staples Index (USD)

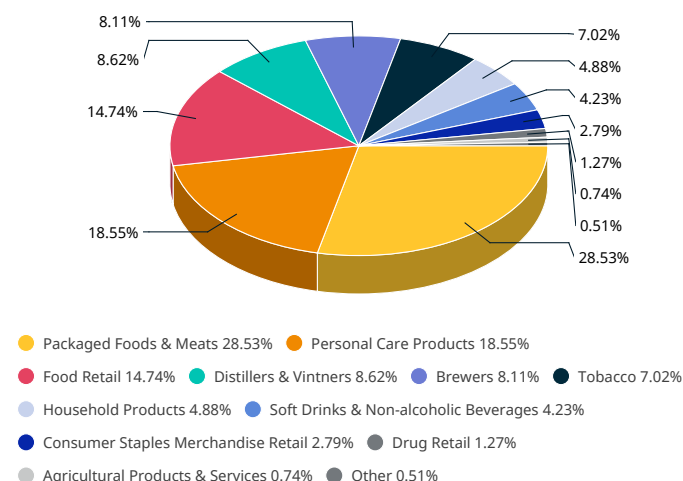
### INDEX CHARACTERISTICS

MSCI ACWI ex USA Cons Staples	
<b>Number of Constituents</b>	178
Mkt Cap (USD Millions)	
<b>Index</b>	1,943,717.24
<b>Largest</b>	283,837.57
<b>Smallest</b>	152.04
<b>Average</b>	10,919.76
<b>Median</b>	4,386.49

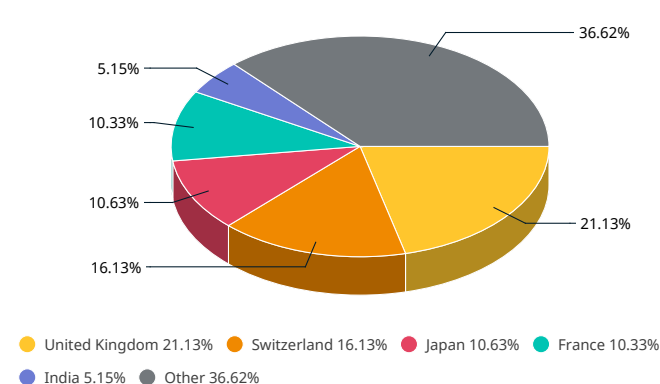
### TOP 10 CONSTITUENTS

	Country	Float Adj Mkt Cap (USD Billions)	Index Wt. (%)
NESTLE	CH	283.84	14.60
UNILEVER PLC (GB)	GB	125.57	6.46
L'OREAL	FR	113.99	5.86
DIAGEO	GB	82.61	4.25
BRITISH AMERICAN TOBACCO	GB	61.18	3.15
ANHEUSER-BUSCH INBEV	BE	52.96	2.72
ALIMENTATION COUCHE	CA	43.91	2.26
DANONE	FR	41.65	2.14
RECKITT BENCKISER GROUP	GB	40.69	2.09
PERNOD RICARD	FR	33.12	1.70
<b>Total</b>		<b>879.52</b>	<b>45.25</b>

### SUB-INDUSTRY WEIGHTS



### COUNTRY WEIGHTS



\*DM countries include: Australia, Austria, Belgium, Canada, Denmark, Finland, France, Germany, Hong Kong, Ireland, Israel, Italy, Japan, Netherlands, New Zealand, Norway, Portugal, Singapore, Spain, Sweden, Switzerland and the UK. EM countries include: Brazil, Chile, China, Colombia, Czech Republic, Egypt, Greece, Hungary, India, Indonesia, Korea, Kuwait, Malaysia, Mexico, Peru, Philippines, Poland, Qatar, Saudi Arabia, South Africa, Taiwan, Thailand, Turkey and United Arab Emirates.

The MSCI ACWI ex USA Consumer Staples Index was launched on Jan 01, 2001. Data prior to the launch date is back-tested test (i.e. calculations of how the index might have performed over that time period had the index existed). There are frequently material differences between back-tested performance and actual results. Past performance – whether actual or back-tested – is no indication or guarantee of future performance.

## ABOUT MSCI

MSCI is a leading provider of critical decision support tools and services for the global investment community. With over 45 years of expertise in research, data and technology, we power better investment decisions by enabling clients to understand and analyze key drivers of risk and return and confidently build more effective portfolios. We create industry-leading research-enhanced solutions that clients use to gain insight into and improve transparency across the investment process. To learn more, please visit [www.msci.com](https://www.msci.com).

The information contained herein (the "Information") may not be reproduced or disseminated in whole or in part without prior written permission from MSCI. The Information may not be used to verify or correct other data, to create indexes, risk models, or analytics, or in connection with issuing, offering, sponsoring, managing or marketing any securities, portfolios, financial products or other investment vehicles. Historical data and analysis should not be taken as an indication or guarantee of any future performance, analysis, forecast or prediction. None of the Information or MSCI index or other product or service constitutes an offer to buy or sell, or a promotion or recommendation of, any security, financial instrument or product or trading strategy. Further, none of the Information or any MSCI index is intended to constitute investment advice or a recommendation to make (or refrain from making) any kind of investment decision and may not be relied on as such. The Information is provided "as is" and the user of the Information assumes the entire risk of any use it may make or permit to be made of the Information. NONE OF MSCI INC. OR ANY OF ITS SUBSIDIARIES OR ITS OR THEIR DIRECT OR INDIRECT SUPPLIERS OR ANY THIRD PARTY INVOLVED IN THE MAKING OR COMPILING OF THE INFORMATION (EACH, AN "MSCI PARTY") MAKES ANY WARRANTIES OR REPRESENTATIONS AND, TO THE MAXIMUM EXTENT PERMITTED BY LAW, EACH MSCI PARTY HEREBY EXPRESSLY DISCLAIMS ALL IMPLIED WARRANTIES, INCLUDING WARRANTIES OF MERCHANTABILITY AND FITNESS FOR A PARTICULAR PURPOSE. WITHOUT LIMITING ANY OF THE FOREGOING AND TO THE MAXIMUM EXTENT PERMITTED BY LAW, IN NO EVENT SHALL ANY OF THE MSCI PARTIES HAVE ANY LIABILITY REGARDING ANY OF THE INFORMATION FOR ANY DIRECT, INDIRECT, SPECIAL, PUNITIVE, CONSEQUENTIAL (INCLUDING LOST PROFITS) OR ANY OTHER DAMAGES EVEN IF NOTIFIED OF THE POSSIBILITY OF SUCH DAMAGES. The foregoing shall not exclude or limit any liability that may not by applicable law be excluded or limited.

© 2024 MSCI Inc. All rights reserved.

