

MSCI Global Index Monitor

Quick and easy online access to market-leading MSCI Global Equity Indices

MSCI

Indices

MSCI offers convenient, online access to a range of index and security level data for over 10,000 MSCI country, regional, sector and strategy indices. Updated on a monthly basis, MSCI Global Index Monitor, a members-only website tool, enables eligible clients to download valuable information that can be used for benchmarking, asset allocation or research purposes.

Key Benefits & Features

- Identify sectors or countries that may be over/under valued based on a host of valuation ratios
- Identify the risk factors that are impacting an index and its sources of return
- Analyze and download a range of monthly data to help you:
 - Determine asset allocation
 - Monitor the performance of the global equity markets
 - Determine the relative value of investments compared to the appropriate benchmarks

Key Data Points Include:

- Index performance
- Index market capitalization
- Country/sector weights
- Index valuation ratios
- Historical index weights and P/E ratios
- Top/bottom 10 constituents for selected indices

The indices are calculated in eight currencies, with or without dividends reinvested. As well as offering indices segmented by size (Large, Mid and Small Cap), MSCI Global Index Monitor also provides coverage of the MSCI Value & Growth, Risk Premia, Thematic and ESG Indices.

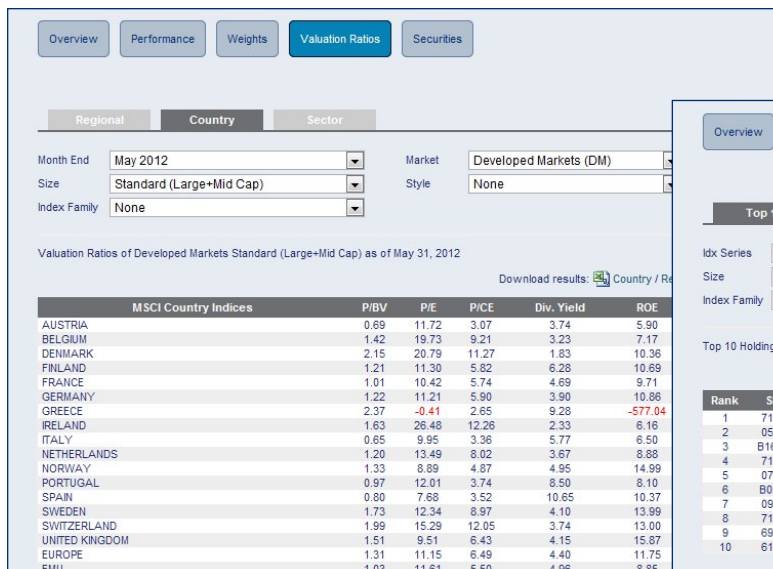
Regional			Country			Sector		
Month End	April 2012		Market	Developed Markets (DM)		Size	Standard (Large+Mid Cap)	
Style	None		Currency	USD		Index Level	Price	
Index Family	None							
Performance of Developed Markets Standard (Large+Mid Cap) (Price) as of Apr 30, 2012								
Download results: Regional / Re								
MSCI Index	Index Code	Sec	Month	3MTD	YTD	1 Yr	3 Yr	
EAFE	990300	924	-2.40%	1.98%	7.34%	-15.85%	8.54%	-7
EAFE+ CANADA	991100	1,026	-2.11%	1.81%	7.21%	-15.70%	8.11%	-6
EAFE ex ISRAEL	144097	911	-2.42%	1.99%	7.32%	-15.83%	N/A	-6
EAFE ex UK	991600	820	-3.38%	1.40%	7.28%	-17.72%	7.10%	-7
EASEA INDEX (EAFE ex JAPAN)	991300	609	-2.18%	1.97%	7.53%	-18.07%	9.50%	-7
EMU	106400	250	-6.42%	-0.98%	5.00%	-29.02%	1.67%	-1
EMU ex GERMANY	106507	199	-7.41%	-3.39%	0.84%	-31.77%	-0.94%	-1
EU	990600	428	2.98%	1.65%	6.74%	20.58%	7.43%	0
EURO	106569	119	-6.89%	-1.55%	4.07%	-29.02%	1.31%	-1
EUROPE	990500	449	-2.94%	2.01%	6.66%	-18.16%	8.28%	-6
EUROPE & MIDDLE EAST	144115	462	-2.90%	1.99%	6.69%	-18.17%	N/A	-6
EUROPE ex EMU	106331	199	-0.22%	4.31%	7.92%	-10.16%	14.36%	-5
EUROPE ex SWITZERLAND	995200	410	-2.99%	1.77%	6.74%	-20.25%	7.57%	-9
EUROPE ex UK	991700	345	-5.04%	0.94%	6.19%	-24.42%	5.55%	-9
FAR EAST	990900	389	-2.56%	2.37%	8.18%	-6.07%	6.91%	-6
G7 INDEX	113647	1,257	-1.22%	4.83%	9.87%	-4.51%	13.62%	-7
KOKUSAI INDEX (WORLD ex JP)	991200	1,295	-1.19%	4.50%	9.70%	-6.95%	14.05%	-7
MSCI WORLD ex CANADA	701174	1,508	-1.46%	4.49%	9.60%	-6.27%	13.10%	-4
NORDIC COUNTRIES	990700	71	-2.80%	5.73%	11.43%	-19.88%	13.51%	-1
NORTH AMERICA	990200	686	-0.63%	5.98%	10.95%	0.62%	16.92%	-0
PACIFIC	990800	462	-1.46%	1.96%	8.55%	-8.31%	9.25%	-1
PACIFIC ex JAPAN	991400	147	1.38%	1.86%	11.68%	-12.49%	17.06%	-1
PAN-EURO	106570	209	-2.88%	1.62%	5.94%	-18.90%	7.86%	-6
WORLD	990100	1,610	-1.37%	4.28%	9.42%	-6.81%	13.16%	-3
WORLD WITH USA GROSS	701609	1,610	-1.37%	4.28%	9.42%	-6.81%	13.16%	-3
WORLD ex AUSTRALIA	996200	1,542	-1.50%	4.42%	9.41%	-6.50%	13.02%	-3

Market Capitalization & Weights
Index market capitalization and country/sector weights for each of the last 12 months

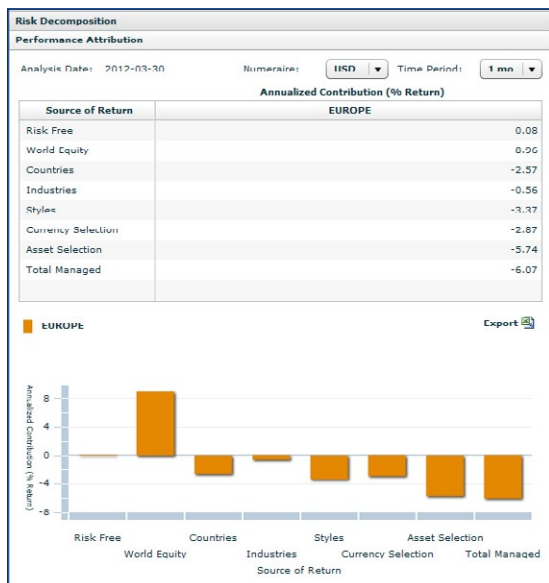
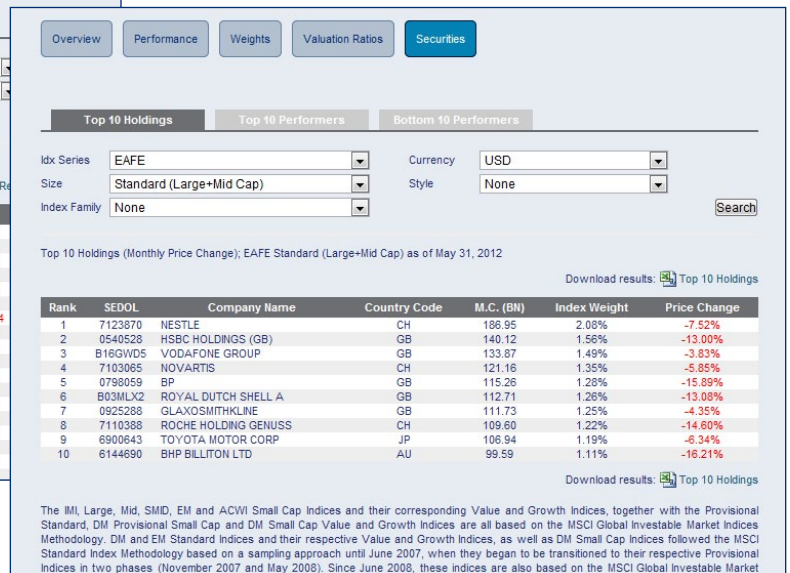
Market Performance

Multi-currency periodic returns for regional, country, sector, Risk Premia, ESG and thematic indices. Barra Risk Decomposition and Performance Attribution is also available for select indices (B).

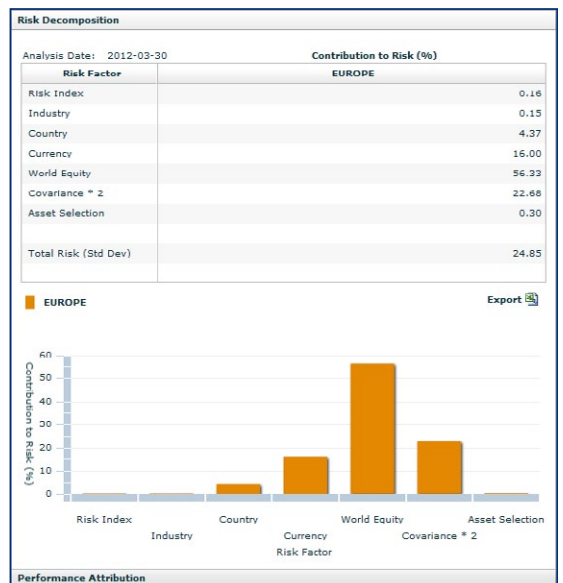
Country & Market Cap			Sector		
Month End	April 2012		Market	Developed Markets (DM)	
Size	Standard (Large+Mid Cap)				
Download results: Sector					
Sector Weights of Developed Markets Standard (Large+Mid Cap) as of Apr 30, 2012					
Countries	CD	CS	En	Fi	HC
AUSTRIA	N/A	N/A	21.55%	43.02%	N/A
BELGIUM	N/A	63.77%	N/A	12.32%	4.56%
DENMARK	N/A	7.65%	N/A	9.93%	57.40%
FINLAND	7.34%	2.16%	1.83%	15.30%	2.37%
FRANCE	13.96%	11.88%	12.88%	13.46%	11.55%
GERMANY	18.70%	4.00%	N/A	16.34%	11.24%
GREECE	23.30%	42.50%	N/A	24.83%	N/A
IRELAND	N/A	22.14%	N/A	N/A	23.89%
ITALY	6.13%	N/A	34.07%	27.30%	N/A
NETHERLANDS	5.48%	37.04%	3.36%	16.19%	N/A
NORWAY	N/A	N/A	53.64%	13.04%	N/A
PORTUGAL	N/A	19.69%	17.38%	8.13%	N/A
SPAIN	7.50%	1.06%	5.80%	39.01%	1.33%
SWEDEN	14.02%	2.07%	1.37%	24.56%	1.06%
SWITZERLAND	5.74%	24.76%	1.98%	17.46%	32.39%
UNITED KINGDOM	6.09%	16.64%	20.30%	17.93%	8.49%
EUROPE	8.89%	14.42%	11.93%	18.12%	11.86%
EMU	12.38%	11.46%	8.18%	18.27%	7.91%
HONG KONG	13.95%	N/A	N/A	59.81%	N/A
JAPAN	20.24%	6.28%	1.65%	17.73%	6.14%
SINGAPORE	9.30%	7.55%	N/A	46.48%	N/A
AUSTRALIA	1.72%	8.36%	6.91%	45.76%	3.49%
NEW ZEALAND	14.17%	N/A	N/A	N/A	N/A
AC PACIFIC	12.79%	6.15%	4.95%	27.77%	3.10%
AC ASIA PACIFIC	12.66%	6.25%	5.22%	27.74%	3.27%
CANADA	3.70%	3.31%	27.36%	34.33%	1.26%
USA	11.70%	10.76%	11.41%	14.28%	11.41%
ISRAEL	N/A	N/A	N/A	14.52%	63.30%



Select Security Level Data
Top 10 index constituents, top 10 and bottom 10 performers for selected regional indices



Performance Attribution
View sources of return for select indices across different time periods



Risk Decomposition
View factors contributing to the risk of select indices

Register Now!

To apply for access, please visit our [website](http://www.msci.com) and register your details. Users will be required to sign a data license agreement to access the site.

MSCI About MSCI

www.msci.com | clientservice@msci.com

MSCI Inc. is a leading provider of investment decision support tools to investors globally, including asset managers, banks, hedge funds and pension funds. MSCI products and services include indices, portfolio risk and performance analytics, and governance tools. The company's flagship product offerings are: the MSCI indices with approximately USD 7 trillion estimated to be benchmarked to them on a worldwide basis; Barra multi-asset class factor models, portfolio risk and performance analytics; RiskMetrics multi-asset class market and credit risk analytics; ISS governance research and outsourced proxy voting and reporting services; FEA valuation models and risk management software for the energy and commodities markets; and CFRA forensic accounting risk research, legal/regulatory risk assessment, and due-diligence. MSCI is headquartered in New York, with research and commercial offices around the world.

The information contained herein (the "Information") may not be reproduced or disseminated in whole or in part without prior written permission from MSCI. The Information may not be used to verify or correct other data, to create indices, risk models, or analytics, or in connection with issuing, offering, sponsoring, managing or marketing any securities, portfolios, financial products or other investment vehicles. Historical data and analysis should not be taken as an indication or guarantee of any future performance, analysis, forecast or prediction. None of the Information or MSCI index or other product or service constitutes an offer to buy or sell, or a promotion or recommendation of, any security, financial instrument or product or trading strategy. Further, none of the Information or any MSCI index is intended to constitute investment advice or a recommendation to make (or refrain from making) any kind of investment decision and may not be relied on as such. The Information is provided "as is" and the user of the Information assumes the entire risk of any use it may make or permit to be made of the Information. NONE OF MSCI INC. OR ANY OF ITS SUBSIDIARIES OR ITS OR THEIR DIRECT OR INDIRECT SUPPLIERS OR ANY THIRD PARTY INVOLVED IN THE MAKING OR COMPILING OF THE INFORMATION (EACH, AN "MSCI PARTY") MAKES ANY WARRANTIES OR REPRESENTATIONS AND, TO THE MAXIMUM EXTENT PERMITTED BY LAW, EACH MSCI PARTY HEREBY EXPRESSLY DISCLAIMS ALL IMPLIED WARRANTIES, INCLUDING WARRANTIES OF MERCHANTABILITY AND FITNESS FOR A PARTICULAR PURPOSE. WITHOUT LIMITING ANY OF THE FOREGOING AND TO THE MAXIMUM EXTENT PERMITTED BY LAW, IN NO EVENT SHALL ANY OF THE MSCI PARTIES HAVE ANY LIABILITY REGARDING ANY OF THE INFORMATION FOR ANY DIRECT, INDIRECT, SPECIAL, PUNITIVE, CONSEQUENTIAL (INCLUDING LOST PROFITS) OR ANY OTHER DAMAGES EVEN IF NOTIFIED OF THE POSSIBILITY OF SUCH DAMAGES. The foregoing shall not exclude or limit any liability that may not be applicable by law be excluded or limited.

¹ As of June 30, 2011, based on eVestment, Lipper and Bloomberg data.

© 2012 MSCI Inc. All rights reserved.

