



# Exchange traded products based on MSCI indexes

ETFs, ETNs, FUTURES, OPTIONS

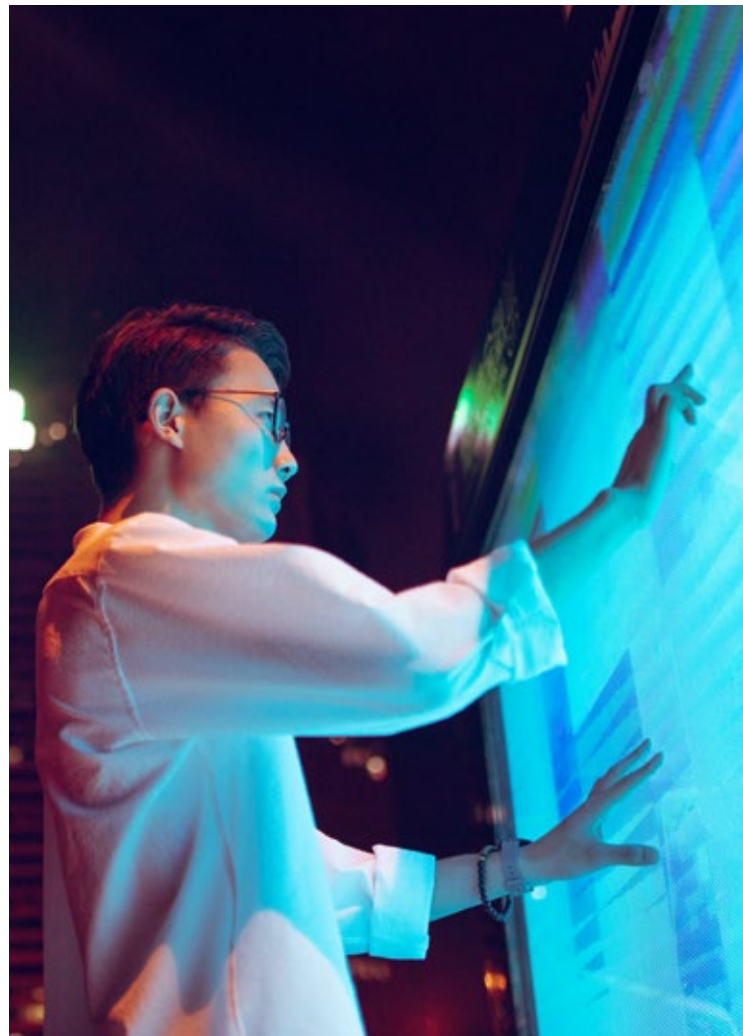
Q3 2020

[\\_\\_\\_\\_\\_ msci.com](https://www.msci.com)



# Table of contents

<b>Introduction</b>	<b>3</b>	<b>ESG</b>	<b>43</b>
<b>All Country (DM + EM) Indexes</b>	<b>4</b>	Faith-Based Indexes	<b>43</b>
Global Indexes	4	ESG Indexes	<b>43</b>
Regional Indexes	4	Bloomberg - Barclays-MSCI Fixed Income	
Sector Indexes	5	ESG Indexes	<b>47</b>
<b>Developed Market Indexes</b>	<b>6</b>	Socially Responsible Indexes	<b>48</b>
Global Indexes	6	<b>Real Estate Indexes</b>	<b>51</b>
Regional Indexes	7	MSCI Direct Property Indexes	
Country Indexes	10		
Domestic Equity Indexes	14		
Sector Indexes	15		
<b>Emerging Market Indexes</b>	<b>19</b>		
Global Indexes	19		
Regional Indexes	20		
Country Indexes	21		
Sector Indexes	26		
<b>Frontier Markets Indexes</b>	<b>28</b>		
Global Indexes	28		
Regional Indexes	28		
Country Indexes	28		
Factor Indexes	28		
Factor Hedged Indexes	31		
<b>Country Strategy Indexes</b>	<b>33</b>		
Factor Indexes	33		
Factor Sector Indexes	35		
<b>Strategy Indexes</b>	<b>36</b>		
Currency Hedged Indexes	36		
Short and Leverage Indexes	37		
<b>Country Strategy Indexes</b>	<b>39</b>		
Currency Hedged Indexes	39		
Short and Leverage Indexes	41		
<b>Thematic Indexes</b>	<b>42</b>		
Economic Exposure	42		
Commodity Producers Indexes	42		
Cyclical & Defensive Sectors Indexes	42		





▶ A wide variety of financial products are based on or use MSCI indexes, including ETFs, mutual funds, insurance products, structured products, OTC derivatives and listed futures and options. This widespread use highlights the quality and global adoption of MSCI's equity indexes. There are more than 1350 ETFs listed globally tracking MSCI Indexes, with over \$900 billion in AUM as of September 30, 2020.<sup>1</sup>

To demonstrate the quality and widespread use and adoption of MSCI indexes, this document contains a broad list compiled from public sources of listed ETFs, ETNs, futures and options based on MSCI indexes.

<sup>1</sup> As of September 30, 2020 as reported by Refinitiv

Ticker/Symbol	Product Name	Product				Index Region					Primary Exchange				ISIN
		ETF	ETN	Futures	Options	Global	Americas	Europe/ Africa	Asia Pacific	Americas	Europe/ Africa	Asia Pacific			
<b>All Country (DM +EM) Indexes</b>															
<b>Global Indexes</b>															
<b>MSCI ACWI Index</b>															
XMAW GR	Xtrackers MSCI AC World Index UCITS ETF DR	•				•									IE00BGHQ0G80
FMAE	EUREX MSCI ACWI (EUR/NTR)			•		•									
FMAC	EUREX MSCI ACWI (USD/NTR)			•		•									
OMAC	EUREX MSCI ACWI (USD/NTR)			•		•									
OMAW	EUREX MSCI ACWI (USD/Pr)				•	•									
FMAW	EUREX MSCI ACWI (USD/Pr)				•	•									
189400 KS	Hanwha ARIRANG SYNTH-MSCI AC World ETF H-Equity Derivatives	•				•							•		KR7189400005
MMW	ICE Futures US MSCI ACWI (USD/NTR)			•		•						•			
MAW	ICE Futures US MSCI ACWI (USD/Pr)			•		•						•			
ACWI US	iShares MSCI ACWI ETF	•				•						•			US4642882579
ISAC LN	iShares MSCI ACWI UCITS ETF	•				•						•			IE00B6R52259
ACWU LN	Lyxor ETF MSCI ACWI - C-USD	•				•						•			FR0011093418
ACWI FP	Lyxor ETF MSCI All Country World ETF	•				•						•			FR0011079466
2559	MUKAM MAXIS World Equity (MSCI ACWI) ETF	•				•						•			JP3048990000
SPYY GR	SPDR MSCI ACWI UCITS ETF	•				•						•			IE00B44Z5B48
SPP1 GY	SPDR MSCI ACWI EUR Hdg UCITS ETF (Acc)	•				•						•			IE00BF1B7389
TMSCI41 IT	Tachlit MSCI All Countries		•			•						•			IL0011187106
ACWIU SW	UBS ETF (IE) MSCI ACWI SF UCITS ETF (USD) A-acc	•				•						•			IE00BYM11H29
ACCUKD SW	UBS ETFs plc MSCI ACWI SF UCITS ETF (USD) A-Ukd	•				•						•			IE00BJXFZ989
<b>MSCI ACWI IMI</b>															
ACIM US	SPDR MSCI ACWI IMI ETF US	•				•						•			US78463X4759
SPYI GR	SPDR MSCI ACWI IMI UCITS ETF	•				•						•			IE00B3YLTY66
<b>Regional Indexes</b>															
<b>MSCI AC Asia Index</b>															
FMAA	EUREX MSCI AC Asia (USD/NTR)			•		•						•			
<b>MSCI AC Asia ex Japan Index</b>															
XAXJ GR	Xtrackers MSCI AC Asia ex Japan TRN Index UCITS ETF	•										•			LU0322252171
FMXJ	EUREX MSCI AC Asia ex Japan (USD/NTR)			•		•						•			
MXJ	HKEX MSCI AC Asia ex Japan (USD/NTR)			•								•			
MCR	ICE Futures Europe MSCI AC Asia ex Japan (USD/NTR)			•								•			
ASI	ICE US MSCI AC Asia ex Japan (USD/NTR)			•								•			
AAXJ US	iShares MSCI All Country Asia ex Japan ETF	•										•			US4642881829
APX FP	Lyxor ETF MSCI AC Asia Ex Japan - D EUR	•										•			FR0010652867
UIQI GY	UBS ETFs plc - MSCI AC Asia ex Japan SF UCITS ETF	•										•			IE00B7WK2W23
<b>MSCI EM Asia ex Korea Index</b>															
NEAXK	SGX MSCI Asia ex Korea (USD/NTR)			•								•			
<b>MSCI Asia APEX 50 Index</b>															
3010 HK	iShares MSCI AC Asia ex Japan Index ETF	•										•			HK0000051877
<b>MSCI AC Asia Pacific Index</b>															
FMAP	EUREX MSCI AC Asia Pacific (USD/NTR)			•								•			
<b>MSCI AC Asia Pacific ex Japan Index</b>															
FMAS	EUREX MSCI AC Asia Pacific ex Japan (USD/NTR)			•								•			
OMAS	EUREX MSCI AC Asia Pacific ex Japan (USD/NTR)				•							•			
MAK	ICE Futures Europe MSCI AC Asia Pacific ex Japan (USD/NTR)			•								•			
AEJ FP	Lyxor ETF MSCI AC Asia Pacific ex Japan	•										•			FR0010312124
AEJ SP	Lyxor UCITS ETF MSCI AC Asia-Pacific Ex Japan - NTR USD - A	•										•			FR0010372185
PAEJ FP	Lyxor UCITS ETF PEA MSCI AC Asia Pacific ex Japan C-EUR	•										•			FR0011869312

Ticker/Symbol	Product Name	Product				Index Region					Primary Exchange				ISIN
		ETF	ETN	Futures	Options	Global	Americas	Europe/ Africa	Asia Pacific	Americas	Europe/ Africa	Asia Pacific			
<b>MSCI AC Far East ex Japan Index</b>															
HMAD LN	HSBC MSCI AC Far East ex Japan UCITS ETF	•													IE00BBQ2W338
MCA	ICE Futures Europe MSCI AC Far East ex Japan (USD/NTR)			•											
IFFF LN	iShares MSCI AC Far East ex Japan UCITS ETF	•													IE00B0M63730
<b>MSCI AC Far East ex Japan Small Cap Index</b>															
ISFE LN	iShares MSCI AC Far East ex Japan Small Cap UCITS ETF	•													IE00B2QWDR12
<b>MSCI ACWI ex Europe Index</b>															
MWL	ICE Futures Europe MSCI ACWI ex Europe (EUR/NTR)			•		•									
<b>MSCI ACWI ex Australia</b>															
MZA	ICE Futures Europe MSCI ACWI ex Australia (USD/NTR)			•		•									
<b>MSCI ACWI ex Japan Index</b>															
1554 JP	Nikko Listed Index Fund World Equity MSCI ACWI ex Japan	•				•								•	JP3047330000
<b>MSCI ACWI ex USA Index</b>															
FMXU	EUREX MSCI ACWI ex USA (USD/NTR)			•		•									
AWN	ICE Futures US MSCI ACWI ex US (USD/NTR)			•		•									
AWE	ICE Futures US MSCI ACWI ex US (USD/Pr)			•		•									
ACWX US	iShares MSCI ACWI ex U.S. ETF	•				•									US4642882405
CWI US	SPDR MSCI ACWI ex USA ETF	•				•									US78463X8487
<b>MSCI ACWI ex USA IMI</b>															
IXUS US	iShares Core MSCI Total International Stock ETF	•				•									US46432F8344
<b>MSCI ACWI ex Canada IMI</b>															
XAW CN	iShares Core MSCI All Country World ex Canada Index ETF	•				•									CA46435D1096
XAW.U CN	iShares Core MSCI All Country World ex Canada Index ETF USD	•				•									CA46435D2086
<b>Sector Indexes</b>															
<b>MSCI AC Asia Pacific Real Estate</b>															
3121 HK	BMO MSCI Asia Pacific Real Estate ETF	•												•	HK0000281011
<b>MSCI ACWI IMI Timber Select Capped Index</b>															
CUT US	Invesco MSCI Global Timber ETF	•				•									US18383Q8794

Ticker/Symbol	Product Name	Product				Index Region					Primary Exchange				ISIN
		ETF	ETN	Futures	Options	Global	Americas	Europe/ Africa	Asia Pacific	Americas	Europe/ Africa	Asia Pacific			
<b>Developed Markets Indexes</b>															
<b>Global Indexes</b>															
<b>MSCI World Index</b>															
CW8 FP	Amundi ETF MSCI World UCITS ETF	•				•					•				FR0010756098
MWRD FP	Amundi Index MSCI World UCITS ETF DR	•				•					•				LU1437016972
10AH GR	Amundi Index MSCI World UCITS ETF DR	•				•					•				LU1737652237
CW8U FP	Amundi ETF MSCI World UCITS ETF	•				•					•				FR0010871160
CBNDDUWI GR	ComStage ETF MSCI World TRN UCITS ETF	•				•					•				LU0392494562
ELFW GR	Deka MSCI World UCITS ETF	•				•					•				DE000ETF508
XMWO GR	Xtrackers MSCI World Index UCITS ETF	•				•					•				LU0274208692
XDWD LN	Xtrackers MSCI World Index UCITS ETF DR	•				•					•				IE00BJ0KDQ92
XDWL GR	Xtrackers MSCI World Index UCITS ETF DR 1D	•				•					•				IE00BK1PV551
3019 HK	Xtrackers MSCI World Index UCITS ETF	•				•					•				LU0455009851
XDWG	Xtrackers MSCI World UCITS ETF 2D	•				•					•				IE00BZ1BS790
FMWN	EUREX MSCI World (EUR/NTR)			•		•					•				
OMWN	EUREX MSCI World (EUR/NTR)				•	•					•				
FMWE	EUREX MSCI World (EUR/GTR)			•		•					•				
FMWB	EUREX MSCI World (GBP/NTR)			•		•					•				
OMWB	EUREX MSCI World (GBP/NTR)				•	•					•				
FMWG	EUREX MSCI World (USD/GTR)			•		•					•				
FMWO	EUREX MSCI World (USD/NTR)			•		•					•				
OMWO	EUREX MSCI World (USD/NTR)				•	•					•				
FMWP	EUREX MSCI World (USD/Pr)			•		•					•				
OMWP	EUREX MSCI World (USD/Pr)				•	•					•				
HMWD LN	HSBC MSCI World UCITS ETF	•				•					•				IE00B4X9L533
MLW	ICE Futures Europe MSCI World (EUR/NTR)			•		•					•				
MCN	ICE Futures Europe MSCI World (USD/NTR)			•		•					•				
MWL	ICE Futures US MSCI World (USD/Pr)			•		•					•				
MWS	ICE US MSCI World (USD/NTR)			•		•					•				
SWDA LN	iShares Core MSCI World UCITS ETF	•				•					•				IE00B4L5Y983
XWD CN	iShares MSCI World Index Fund	•				•					•				CA46430Y1088
URTH US	iShares MSCI World ETF	•				•					•				US4642863926
IWRD LN	iShares MSCI World UCITS ETF Inc	•				•					•				IE00B0M62Q58
IWDG LN	iShares Core MSCI World UCITS ETF Dist	•				•					•				IE00BD45YS76
WLD FP	Lyxor ETF MSCI World	•				•					•				FR0010315770
EWLD FP	Lyxor UCITS ETF PEA MSCI World C-EUR	•				•					•				FR0011869353
LCUW GR	Lyxor Core MSCI World DR UCITS ETF	•				•					•				LU1781541179
251350 KS	Samsung KODEX MSCI World ETF	•				•					•				KR7251350005
329650 KS	Samsung KODEX TRF3070 ETF	•				•					•				KR7329650006
329660 KS	Samsung KODEX TRF5050 ETF	•				•					•				KR7329660005
329670 KS	Samsung KODEX TRF7030 ETF	•				•					•				KR7329670004
STXWDM SJ	Satrix MSCI World ETF	•				•					•				ZAE000246104
208470 KS	Shinhan BNPP SMART SYNTH-MSCI Developed Market ETF - Equity-Derivative H	•				•					•				KR7208470005
SMSWLD GY	Source MSCI World UCITS ETF	•				•					•				IE00B60SX394
ETFWLD SJ	Stanlib MSCI World ETF	•				•					•				ZAE000255170
SYGWD SJ	Sygnia Itrix MSCI World ETF	•				•					•				ZAE000249553
IE00BFY0GT14	SPDR MSCI World UCITS ETF	•				•					•				SPPW GR
TCMSC70 IT	Tachlit MSCI World NTR ILS 40a'		•			•					•				IL0011357972
WRDCHA SW	UBS ETF-MSCI World UCITS ETF	•				•					•				LU0340285161
UBU7 GR	UBS Irl ETF plc - MSCI World UCITS ETF	•				•					•				IE00B7KQ7B66
WRDUSY SW	UBS (Irl) ETF plc - MSCI World UCITS ETF	•				•					•				IE00BD4TXV59
<b>MSCI World Mid Cap Index</b>															
FMWM	EUREX MSCI World Mid Cap (USD/NTR)			•		•					•				

Ticker/Symbol	Product Name	Product				Index Region					Primary Exchange				ISIN
		ETF	ETN	Futures	Options	Global	Americas	Europe/ Africa	Asia Pacific	Americas	Europe/ Africa	Asia Pacific			
<b>MSCI World Small Cap Index</b>															
FMSC	EUREX MSCI World Small Cap (USD/NTR)			•		•						•			
ZPRS GY	SPDR MSCI World Small Cap UCITS ETF	•				•						•		IE00BCBJG560	
WSML LN	iShares MSCI World Small Cap UCITS ETF	•				•						•		IE00BF4RFH31	
<b>MSCI World IMI</b>															
IWLD AU	iShares Core MSCI World All Cap ETF	•				•						•		AU000001IWL6	
<b>MSCI World Growth Index</b>															
FMOG	EUREX MSCI World Growth (USD/NTR)			•		•						•			
<b>MSCI World Value Index</b>															
FMOV	EUREX MSCI World Value (USD/NTR)			•		•						•			
<b>Regional Indexes</b>															
<b>MSCI AC ASEAN Index</b>															
FMSE	EUREX MSCI AC ASEAN (USD/NTR)			•		•						•			
<b>MSCI EAFE</b>															
ZEA CN	BMO MSCI EAFE Index ETF	•				•						•		CA05579E1097	
MXEA	CBOE MSCI EAFE (USD/Pr)				•	•						•			
FMFP	EUREX MSCI EAFE (USD/Pr)			•		•						•			
FMFA	EUREX MSCI EAFE (USD/NTR)			•		•						•			
OMFP	EUREX MSCI EAFE (USD/Pr)				•	•						•			
OMFA	EUREX MSCI EAFE (USD/NTR)				•	•						•			
195970 KS	Hanwha ARIRANG Synth-MSCI EAFE ETF H	•				•						•		KR7195970009	
MCI	ICE Futures Europe MSCI EAFE (USD/NTR)			•		•						•			
MFU	ICE Futures US MSCI EAFE (USD/NTR)			•		•						•			
MFS	ICE Futures US MSCI EAFE (USD/Pr)			•		•						•			
EFA US	iShares MSCI EAFE ETF	•				•						•		US4642874659	
IVE	iShares MSCI EAFE ETF AUD	•				•						•		AU000000IVE4	
IJUL US	Innovator MSCI EAFE Power Buffer ETF	•				•						•		US45782C7222	
550052 KS	NH QV MSCI EAFE ETN 52		•			•						•		KRG552100528	
<b>MSCI EAFE IMI</b>															
IEFA US	iShares Core MSCI EAFE ETF	•				•						•		US46432F8427	
XEF CN	iShares MSCI EAFE IMI ETF	•				•						•		CA46434T1057	
XEF.U CN	iShares Core MSCI EAFE IMI Index ETF USD	•				•						•		CA46434T2048	
<b>MSCI EAFE Small Cap Index</b>															
SCZ US	iShares MSCI EAFE Small Cap ETF	•				•						•		US4642882736	
<b>MSCI EAFE Growth Index</b>															
EFG US	iShares MSCI EAFE Growth ETF	•				•						•		US4642888857	
<b>MSCI EAFE Value Index</b>															
EFV US	iShares MSCI EAFE Value ETF	•				•						•		US4642888774	
<b>MSCI EMU Index</b>															
CMU FP	Amundi ETF MSCI EMU UCITS ETF	•						•				•		FR0010655688	
CMUD FP	Amundi Index MSCI EMU - UCITS ETF DR D	•						•				•		LU2059756325	
XD5E GR	X-trackers MSCI EMU Index UCITS ETF	•						•				•		LU0846194776	
FMGM	EUREX MSCI EMU (EUR/GTR)			•				•				•			
FMMU	EUREX MSCI EMU (EUR/NTR)			•				•				•			
MSB	ICE Futures Europe MSCI EMU (EUR/NTR)			•				•				•			
CSEMU SW	iShares MSCI EMU UCITS ETF	•						•				•		IE00B53QG562	
EZU US	iShares MSCI Eurozone ETF	•						•				•		US4642866085	
CEUD IM	iShares MSCI EMU UCITS ETF	•						•				•		IE00BYXZ2585	
CEUG LN	iShares Core MSCI EMU UCITS ETF	•						•				•		IE00BG0J9Y53	
CEUX IX	iShares Core MSCI EMU UCITS ETF - MXN Hedged (Acc)	•						•				•		IE00BL3J3H81	
MFE FP	Lyxor UCITS ETF MSCI EMU	•						•				•		FR0007085501	
ZPRE GR	SPDR MSCI EMU UCITS ETF	•						•				•		IE00B910VR50	
EMUEUA GR	UBS ETF-MSCI EMU UCITS ETF	•						•				•		LU0147308422	
EMUUKD SW	UBS ETF MSCI EMU UCITS ETF	•						•				•		LU1107559376	
EMUAA SW	UBS ETF MSCI EMU UCITS ETF	•						•				•		LU0950668870	
<b>MSCI EMU Large Cap Index</b>															
EMUL LN	iShares MSCI EMU Large Cap UCITS ETF	•						•				•		IE00BCLWRF22	

Ticker/Symbol	Product Name	Product				Index Region					Primary Exchange			ISIN
		ETF	ETN	Futures	Options	Global	Americas	Europe/ Africa	Asia Pacific	Americas	Europe/ Africa	Asia Pacific		
<b>MSCI EMU Mid Cap Index</b>														
EMUM LN	iShares MSCI EMU Mid Cap UCITS ETF	•						•		•				IE00BCLWRD08
<b>MSCI EMU Small Cap Index</b>														
CSEMUS SW	iShares MSCI EMU Small Cap UCITS ETF	•						•		•				IE00B3VWMM18
MMS FP	Lyxor ETF MSCI EMU Small Cap	•						•		•				FR0010168773
UEFD GR	UBS ETF-MSCI EMU Small Cap UCITS ETF	•						•		•				LU0671493277
<b>MSCI EMU Growth Index</b>														
GWT FP	Lyxor ETF MSCI EMU Growth	•						•		•				FR0010168765
FMIG	EUREX MSCI EMU Growth (EUR/NTR)			•				•		•				
<b>MSCI EMU Value Index</b>														
VAL FP	Lyxor ETF MSCI EMU Value	•						•		•				FR0010168781
EMVEUA SW	UBS ETF-MSCI EMU Value UCITS ETF	•						•		•				LU0446734369
FMIV	EUREX MSCI EMU Value (EUR/NTR)			•				•		•				
<b>MSCI Europe Index</b>														
CEU FP	Amundi ETF MSCI Europe UCITS ETF	•						•		•				FR0010655696
CEU2 FP	Amundi Index MSCI Europe UCITS ETF DR	•						•		•				LU1437015735
10AI GR	Amundi Index MSCI Europe UCITS ETF DR	•						•		•				LU1737652310
PCEU FP	Amundi ETF PEA MSCI Europe UCITS ETF - EUR	•						•		•				FR0013412038
CBNDUE1 GR	ComStage ETF MSCI Europe TRN UCITS ETF	•						•		•				LU0392494646
XMEU GR	Xtrackers MSCI Europe Index UCITS ETF	•						•		•				LU0274209237
XIEE GR	Xtrackers MSCI Europe Index UCITS ETF DR 1D	•						•		•				U1242369327
ETFEUAC GR	Deka MSCI Europe UCITS ETF	•						•		•				DE000ETFL284
FMGE	EUREX MSCI Europe (EUR/GTR)			•				•		•				
FMEU	EUREX MSCI Europe (EUR/NTR)			•				•		•				
OMEU	EUREX MSCI Europe (EUR/NTR)				•			•		•				
FMEP	EUREX MSCI Europe (EUR/Pr)			•				•		•				
OMEF	EUREX MSCI Europe (EUR/Pr)				•			•		•				
FMGU	EUREX MSCI Europe (USD/GTR)			•				•		•				
FMED	EUREX MSCI Europe (USD/NTR)			•				•		•				
HMEU LN	HSBC MSCI Europe ETF UCITS ETF	•						•		•				IE00B5BD5K76
MPE	ICE Futures Europe MSCI Europe (EUR/NTR)			•				•		•				
MPY	ICE Futures Europe MSCI Europe (EUR/NTR)				•			•		•				
MCJ	ICE Futures Europe MSCI Europe (USD/NTR)			•				•		•				
MCE	ICE Futures US MSCI Europe (EUR/Pr)			•				•		•				
EU9	ICE US MSCI Europe (USD/NTR)			•				•		•				
SMEA LN	iShares MSCI Europe UCITS ETF Acc	•						•		•				IE00B4K48X80
IMEA LN	iShares MSCI Europe UCITS ETF Inc	•						•		•				IE00B1YZSC51
MEU FP	Lyxor ETF MSCI Europe	•						•		•				FR0010261198
PMEU FP	Lyxor PEA MSCI Europe UCITS ETF	•						•		•				FR0013400256
SMSEUR GY	Source MSCI Europe UCITS ETF	•						•		•				IE00B60SWY32
ERO FP	SPDR MSCI Europe UCITS ETF	•						•		•				FR0000001885
EUREUA SW	UBS ETF-MSCI Europe UCITS ETF	•						•		•				LU0446734104
<b>MSCI Euro Index</b>														
MEU	ICE Futures US MSCI Euro (EUR/Pr)			•				•		•				
<b>MSCI Pan-Euro Index</b>														
MPP	ICE Futures US MSCI Pan Euro (EUR/Pr)			•				•		•				
<b>MSCI Europe ex EMU Index</b>														
CU9 FP	Amundi ETF MSCI Europe ex EMU UCITS ETF	•						•		•				FR0010821819
ELF5 GR	Deka MSCI Europe ex EMU UCITS ETF	•						•		•				DE000ETFL458
<b>MSCI Europe ex Switzerland Index</b>														
CS9 FP	Amundi ETF MSCI Europe Ex Switzerland UCITS ETF	•						•		•				FR0010821835
FMXS	EUREX MSCI Europe ex Switzerland (EUR/NTR)			•				•		•				
MSZ	ICE Futures Europe MSCI Europe ex Switzerland (EUR/NTR)			•				•		•				
<b>MSCI Europe ex UK Index</b>														
AEXK FP	Amundi ETF MSCI Europe ex UK UCITS ETF C	•						•		•				FR0010988642
FMXG	EUREX MSCI Europe ex UK (EUR/NTR)			•				•		•				
MKE	ICE Futures Europe MSCI Europe ex UK (USD/NTR)			•				•		•				
IEUX LN	iShares MSCI Europe ex UK UCITS ETF	•						•		•				IE00B14X4N27



Ticker/Symbol	Product Name	Product				Index Region					Primary Exchange				ISIN
		ETF	ETN	Futures	Options	Global	Americas	Europe/ Africa	Asia Pacific	Americas	Europe/ Africa	Asia Pacific			
MXUK GR	Source MSCI Europe ex-UK UCITS ETF	•													DE000A2DPCPO
<b>MSCI Europe IMI</b>															
XEU CN	iShares MSCI Europe IMI Index ETF	•													CA46434W1086
IEUR US	iShares Core MSCI Europe ETF	•													US46434V7385
<b>MSCI Europe Large Cap Index</b>															
ETFEULC GR	Deka MSCI Europe LC UCITS ETF	•													DE000ETFL086
590003 KS	Miraeasset Securities Miraeasset Europe Large Cap ETN H 3		•												KRG594100031
<b>MSCI Europe Mid Cap Index</b>															
CEM FP	Amundi ETF MSCI Europe Mid Cap UCITS ETF	•													FR0010612218
CBMMDUEU GR	ComStage ETF MSCI Europe Mid Cap TRN UCITS ETF	•													LU0392496260
XEUM GR	Xtrackers MSCI Europe Mid Cap Index UCITS ETF	•													LU0322253732
ETFEUMC GR	Deka MSCI Europe MC UCITS ETF	•													DE000ETFL292
EUMD LN	iShares MSCI Europe Mid Cap UCITS ETF	•													IE00BF20LF40
EMID LN	iShares MSCI Europe Mid Cap UCITS ETF	•													IE00BYXYX745
590004 KS	Miraeasset Securities Miraeasset Europe Mid Cap ETN H 4		•												KRG594100049
<b>MSCI Europe Small Cap Index</b>															
CBNCUDE1 GR	ComStage ETF MSCI Europe Small Cap TRN UCITS ETF	•													LU0392496344
FMES	EUREX MSCI Europe Small Cap (EUR/NTR)			•											
XXSC GR	Xtrackers MSCI Europe Small Cap Index UCITS ETF	•													LU0322253906
IEUS US	iShares MSCI Europe Small-Cap ETF	•													US4642884971
SMC FP	SPDR MSCI Europe Small Cap UCITS ETF	•													FR0010149880
<b>MSCI Europe Growth Index</b>															
CG9 FP	Amundi ETF MSCI Europe Growth UCITS ETF	•													FR0010717108
FMEG	EUREX MSCI Europe Growth (EUR/NTR)			•											
OMEG	EUREX MSCI Europe Growth (EUR/NTR)				•										
MGE	ICE Futures US MSCI Europe Growth (EUR/Pr)			•											
<b>MSCI Europe Value Index</b>															
CV9 FP	Amundi ETF MSCI Europe Value UCITS ETF	•													FR0010717116
D5BL GR	Xtrackers MSCI Europe Value TRN Index UCITS ETF	•													LU0486851024
FMEV	EUREX MSCI Europe Value (EUR/NTR)			•											
OMEV	EUREX MSCI Europe Value (EUR/NTR)				•										
MPU	ICE Futures US MSCI Europe Value (EUR/Pr)			•											
EMSV GR	Source MSCI Europe Value UCITS ETF	•													IE00B3LK4Z20
<b>MSCI Kokusai Index</b>															
FMKG	EUREX MSCI Kokusai (USD/GTR)			•											
FMKN	EUREX MSCI Kokusai (USD/NTR)			•											
MKI	ICE Futures Europe MSCI Kokusai (JPY/NTR)			•											
MKO	ICE Futures Europe MSCI Kokusai (USD/GTR)			•											
MCK	ICE Futures Europe MSCI Kokusai (USD/NTR)			•											
TOK US	iShares MSCI Kokusai ETF	•													US4642882652
1657 JP	iShares Core MSCI Kokusai ETF	•													JP3048550002
1550 JP	MAXIS Global Equity MSCI Kokusai ETF	•													JP3047290006
2513 JP	Next Funds International Equity MSCI-Kokusai Unhedged ETF	•													JP3048640001
1680 JP	Nikko Listed Index Fund International Developed Countries Equity - MSCI-Kokusai	•													JP3047120005
KOKU US	Xtrackers MSCI Kokusai Equity ETF	•													US2330511351
<b>MSCI Nordic Index</b>															
CN1 FP	Amundi ETF MSCI Nordic UCITS ETF	•													FR0010655738
XDN0 GR	Concept Fund Solutions - Xtrackers MSCI Nordic Index UCITS ETF DR	•													IE00B9MRHC27
<b>MSCI North America Index</b>															
NRAM FP	Amundi Index MSCI North America UCITS ETF DR	•													LU1437016543
DNRA GR	Amundi Index MSCI North America UCITS ETF DR	•													LU1737653045
CBNDDUNA GR	ComStage ETF MSCI North America TRN UCITS ETF	•													LU0392494992
FMGA	EUREX MSCI North America (USD/GTR)			•											
FMNA	EUREX MSCI North America (USD/NTR)			•											
NAA	ICE US MSCI North America (USD/NTR)			•											
INAA LN	iShares MSCI North America UCITS ETF	•													IE00B14X4M10

Ticker/Symbol	Product Name	Product				Index Region					Primary Exchange				ISIN
		ETF	ETN	Futures	Options	Global	Americas	Europe/ Africa	Asia Pacific	Americas	Europe/ Africa	Asia Pacific			
<b>MSCI North America SMID Cap Index</b>															
FMNS	EUREX MSCI North America SMID (USD/NTR)			•		•				•					
<b>MSCI Pacific Index</b>															
CBNDUP GR	ComStage ETF MSCI Pacific TRN UCITS ETF	•								•		•		LU0392495023	
FMPA	EUREX MSCI Pacific (USD/GTR)			•						•		•			
FMPG	EUREX MSCI Pacific (USD/NTR)			•						•		•			
MPC	HKEX MSCI Pacific (USD/NTR)			•						•			•		
MPA	ICE US MSCI Pacific (USD/NTR)			•						•	•				
<b>MSCI Pacific IMI</b>															
IPAC US	iShares Core MSCI Pacific ETF	•								•	•			US46434V6965	
<b>MSCI Pacific ex Japan Index</b>															
CP9 FP	Amundi ETF MSCI Pacific ex Japan UCITS ETF	•								•		•		FR0010713669	
CP9U FP	Amundi ETF MSCI Pacific ex Japan UCITS ETF DR	•								•		•		FR0010871137	
XPXJ GR	Xtrackers MSCI Pacific ex Japan TRN Index UCITS ETF	•								•		•		LU0322252338	
XPXJ SP	Xtrackers MSCI Pacific ex Japan TRN Index UCITS ETF DR - 1C	•								•		•		LU0455009935	
FMPX	EUREX MSCI Pacific ex Japan (USD/NTR)			•						•		•			
HMXJ LN	HSBC MSCI Pacific ex Japan UCITS ETF	•								•		•		IE00B5SG8Z57	
MPJ	HKEX MSCI Pacific ex Japan (USD/NTR)			•						•			•		
MPJ	ICE Futures Europe MSCI Pacific ex Japan (USD/NTR)			•						•		•			
PAC	ICE US MSCI Pacific ex Japan (USD/NTR)			•						•	•				
CSPXJ SW	iShares Core MSCI Pacific ex Japan UCITS ETF	•								•		•		IE00B52MJY50	
EPP US	iShares MSCI Pacific ex Japan ETF	•								•	•			US4642866655	
IPXJ LN	iShares MSCI Pacific ex Japan UCITS ETF (Dist)	•								•		•		IE00B4WXJD03	
PAXJ FP	Lyxor MSCI Pacific ex Japan UCITS ETF	•								•		•		LU1220245556	
NPXJ	SGX MSCI Pacific ex Japan (USD/NTR)	•								•			•		
PACUSA SW	UBS ETF MSCI Pacific ex Japan	•								•		•		LU0446734526	
PACUKD SW	UBS ETF MSCI Pacific ex Japan UCITS ETF	•								•		•		LU1107559707	
PACUA SW	UBS ETF (LU) MSCI Pacific (ex Japan) UCITS ETF (USD) A-acc	•								•		•		LU0940748279	
<b>MSCI World ex Australia Index</b>															
VGS AU	Vanguard MSCI Index International Shares ETF	•				•							•	AU000000VGS8	
<b>MSCI World ex Australia Small Cap Index</b>															
VISM AU	Vanguard MSCI International Small Companies ETF	•				•							•	AU0000026171	
<b>MSCI World ex EMU Index</b>															
CM9 FP	Amundi ETF MSCI World ex EMU UCITS ETF	•				•						•		FR0010756114	
WLDX IM	Lyxor MSCI World ex EMU UCITS ETF	•				•						•		FR0013209921	
<b>MSCI World ex Europe Index</b>															
CE8 FP	Amundi ETF MSCI World ex Europe UCITS ETF	•				•						•		FR0010756122	
CE8USD SW	Amundi ETF MSCI World Ex Europe UCITS ETF	•				•						•		FR0010871186	
<b>MSCI WORLD ex USA IMI Index</b>															
IDEV US	iShares Core MSCI International Developed Markets ETF	•				•						•		US46435G3267	
<b>Country Indexes</b>															
<b>MSCI Australia Index</b>															
FMAU	EUREX MSCI Australia (USD/NTR)			•						•		•			
MAN	HKEX MSCI Australia (USD/NTR)			•						•			•		
EWA US	iShares MSCI Australia ETF	•								•	•			US4642861037	
SAUS LN	iShares MSCI Australia UCITS ETF	•								•		•		IE00B5377D42	
AAEA	SGX MSCI Australia (USD/NTR)			•						•			•		
AUHGBD SW	UBS Irl ETF plc - MSCI Australia UCITS ETF	•								•		•		IE00BXDZNP83	
AUSAUW SW	UBS Irl ETF plc - MSCI Australia UCITS ETF CHF	•								•		•		IE00BD4TY451	
AUSAUW SW	UBS (Irl) ETF plc - MSCI Australia UCITS ETF (AUD) A-dis	•								•		•		IE00BD4TY345	
<b>MSCI Australia Large Cap Index</b>															
VLC AU	Vanguard MSCI Australian Large Companies ETF	•								•			•	AU000000VLC2	
<b>MSCI Australia Small Cap Index</b>															
VSO AU	Vanguard MSCI Australian Small Companies ETF	•								•			•	AU000000VSO2	
<b>MSCI Austria IMI 25/50 Index</b>															
EWO US	iShares MSCI Austria ETF	•								•		•		US4642862027	

Ticker/Symbol	Product Name	Product				Index Region					Primary Exchange				ISIN
		ETF	ETN	Futures	Options	Global	Americas	Europe/ Africa	Asia Pacific	Americas	Europe/ Africa	Asia Pacific			
<b>MSCI Belgium Index</b>															
FMBE	EUREX MSCI Belgium (EUR/NTR)			•			•			•					
<b>MSCI Belgium IMI 25/50 Index</b>															
EWK US	iShares MSCI Belgium ETF	•					•			•				US4642863017	
<b>MSCI Canada Index</b>															
D5BH GR	Xtrackers MSCI Canada Index UCITS ETF	•					•			•				LU0476289540	
FMGC	EUREX MSCI Canada (USD/GTR)			•			•			•					
FMCA	EUREX MSCI Canada (USD/NTR)			•			•			•					
HCAN LN	HSBC MSCI Canada UCITS ETF	•					•			•				IE00B51B7Z02	
MDB	ICE Futures Europe MSCI Canada (EUR/NTR)			•			•			•					
MDA	ICE Futures Europe MSCI Canada (USD/NTR)			•			•			•					
MCL	ICE Futures US MSCI Canada (USD/Pr)			•			•			•					
CAD	ICE US MSCI Canada (USD/GTR)			•			•			•					
CSCA SW	iShares MSCI Canada UCITS ETF	•					•			•				IE00B52SF786	
LYPT GR	Lyxor ETF MSCI Canada UCITS ETF	•					•			•				LU0496786731	
CANCD SW	UBS ETF-MSCI Canada UCITS ETF	•					•			•				LU0446734872	
CANUKD SW	UBS ETF-MSCI Canada UCITS ETF	•					•			•				LU1107559962	
CANA SW	UBS ETF – MSCI Canada UCITS ETF (CAD) A-acc	•					•			•				LU0950672807	
CAHEUA SW	UBS ETF-MSCI Canada UCITS ETF	•					•			•				LU1130155606	
<b>MSCI Canada Custom Capped Index</b>															
EWC	iShares MSCI Canada ETF	•					•			•				US4642865095	
<b>MSCI Denmark Index</b>															
FMDM	EUREX MSCI Denmark (USD/NTR)			•			•			•					
<b>MSCI Denmark IMI 25/50 Index</b>															
EDEN US	iShares MSCI Denmark ETF	•					•			•				US4642985232	
<b>MSCI France Index</b>															
CF1 FP	Amundi ETF MSCI France	•					•			•				FR0010655704	
MFR	ICE Futures Europe MSCI France (EUR/NTR)			•			•			•					
FMGF	EUREX MSCI France (EUR/GTR)			•			•			•					
FMFR	EUREX MSCI France (EUR/NTR)			•			•			•					
EWQ US	iShares MSCI France ETF	•					•			•				US4642867075	
ISFR LN	iShares MSCI France UCITS ETF	•					•			•				IE00BP3QZJ36	
<b>MSCI Finland Index</b>															
FMFI	EUREX MSCI Finland (EUR/NTR)			•			•			•					
<b>MSCI Finland IMI 25/50 Index</b>															
EFNL US	iShares MSCI Finland ETF	•					•			•				US4642985158	
<b>MSCI Germany Index</b>															
EWG US	iShares MSCI Germany ETF	•					•			•				US4642868065	
<b>MSCI Germany Small Cap Index</b>															
EWGS US	iShares MSCI Germany Small Cap ETF	•					•			•				US4642984656	
<b>MSCI Hong Kong Index</b>															
FMHK	EUREX MSCI Hong Kong (USD/NTR)			•			•			•					
MHN	HKEX MSCI Hong Kong (USD/NTR)			•			•			•					
MCM	ICE Futures Europe MSCI Hong Kong (USD/NTR)			•			•			•					
EWH US	iShares MSCI Hong Kong ETF	•					•			•				US4642868719	
VS	SGX MSCI Hong Kong + (HKD/Pr)			•			•			•					
NHK	SGX MSCI Hong Kong (USD/NTR)			•			•			•					
HKDU SW	UBS ETF MSCI Hong Kong UCITS ETF	•					•			•				LU1169827224	
<b>MSCI All Ireland Capped Index</b>															
EIRL US	iShares MSCI Ireland ETF	•					•			•				US4642985075	
<b>MSCI Israel Capped IMI Index</b>															
EIS US	iShares MSCI Israel ETF	•					•			•				US4642866325	
<b>MSCI Italy Index</b>															
C032 GR	ComStage MSCI Italy TRN UCITS ETF	•					•			•				LU1104574725	
FMIT	EUREX MSCI Italy (USD/NTR)			•			•			•					
<b>MSCI Italy 25/50 Index</b>															
EWI US	iShares MSCI Italy ETF	•					•			•				US4642868552	

Ticker/Symbol	Product Name	Product				Index Region					Primary Exchange				ISIN
		ETF	ETN	Futures	Options	Global	Americas	Europe/ Africa	Asia Pacific	Americas	Europe/ Africa	Asia Pacific			
<b>MSCI Japan Index</b>															
CJ1 FP	Amundi ETF MSCI Japan UCITS ETF	•													FR0010688242
CJ1Y FP	Amundi ETF MSCI Japan UCITS ETF DR - JPY	•													FR0010871202
XMJP GR	Xtrackers MSCI Japan TRN Index UCITS ETF - 1C	•													LU0274209740
ETFJPAC GR	Deka MSCI Japan UCITS ETF	•													DE000ETFL300
FMJG	EUREX MSCI Japan (USD/GTR)			•											
FMJP	EUREX MSCI Japan (USD/NTR)			•											
OMJP	EUREX MSCI Japan (USD/NTR)				•										
FMJY	EUREX MSCI Japan (JPY/NTR)			•											
HMJP LN	HSBC MSCI Japan UCITS ETF	•													IE00B5VX7566
MJU	HKEX MSCI Japan (USD/NTR)			•										•	
MJP	HKEX MSCI Japan (JPY/Pr)			•										•	
MJJ	HKEX MSCI Japan (JPY/NTR)			•										•	
JPP	ICE US MSCI Japan (USD/NTR)			•					•						
MCO	ICE Futures Europe MSCI Japan (USD/NTR)			•											
CSJP SW	iShares MSCI Japan UCITS ETF (Acc)	•													IE00B53QDK08
EWJ US	iShares MSCI Japan ETF	•								•					US4642868487
IJPN LN	iShares MSCI Japan UCITS ETF (Dist)	•													IE00B02KXH56
IJP	iShares MSCI Japan ETF AUD	•												•	AU000000IJP5
LCUJ GR	Lyxor Core MSCI Japan DR UCITS ETF	•													LU1781541252
AJCA	SGX MSCI Japan (USD/NTR)			•										•	
JAPA	SGX MSCI Japan (JPY/Pr)			•										•	
JJPA	SGX MSCI Japan (JPY/NTR)			•										•	
ZPDJ GR	SPDR MSCI Japan UCITS ETF	•													IE00BZ0G8B96
SMSJPN GY	Source MSCI Japan UCITS ETF	•													IE00B60SX287
SYGJP SJ	Sygnia Itrix MSCI Japan ETF	•													ZAE000249538
JPNCHA SW	UBS ETF-MSCI Japan UCITS ETF	•													LU0136240974
JPNA SW	UBS ETF – MSCI Japan UCITS ETF (JPY) A-acc	•													LU0950671825
JPNUKD SW	UBS ETF-MSCI Japan UCITS ETF	•													LU1107559616
<b>MSCI Japan IMI</b>															
IJPA LN	iShares Core MSCI Japan IMI UCITS ETF	•													IE00B4L5YX21
SJPD NA	iShares Core MSCI Japan IMI UCITS ETF	•													IE00BFM15T99
SJPE	iShares Core MSCI Japan IMI UCITS ETF EUR Hgd Acc	•													IE00BKT6FV49
<b>MSCI Japan Large Cap Index</b>															
ETFJPLC GR	Deka MSCI Japan LC UCITS ETF	•													DE000ETFL102
590005 KS	Miraeasset Securities Miraeasset Japan Large Cap ETN H 5		•												KRG595100055
<b>MSCI Japan Mid Cap Index</b>															
ETFJPMC GR	Deka MSCI Japan MC UCITS ETF	•													DE000ETFL318
590006 KS	Miraeasset Securities Miraeasset Japan Mid Cap ETN H 6		•												KRG595100063
<b>MSCI Japan Small Cap Index</b>															
SCJ US	iShares MSCI Japan Small Cap ETF	•													US4642865822
ISJP LN	iShares MSCI Japan Small Cap UCITS ETF (Dist)	•													IE00B2QWDY88
<b>MSCI Japan Value Index</b>															
EWJV US	iShares MSCI Japan Value ETF	•													US46435U3749
<b>MSCI Japan Human and Physical Investment Index</b>															
1479 JP	Daiwa ETF MSCI Japan Human and Physical Investment Index	•													JP3048220002
<b>MSCI Japan Empowering Women (WIN) Select Index</b>															
2518 JP	Next Funds MSCI Japan Empowering Women Select Index ETF	•													JP3048720001
<b>MSCI Netherlands Index</b>															
FMNL	EUREX MSCI Netherlands (EUR/NTR)			•											
<b>MSCI Netherlands IMI 25/50 Index</b>															
EWN US	iShares MSCI Netherlands ETF	•													US4642868149
<b>MSCI New Zealand Index</b>															
FMNZ	EUREX MSCI New Zealand (USD/NTR)			•											
MNZ	HKEX MSCI New Zealand (USD/NTR)			•											
NNZ	SGX MSCI New Zealand (USD/NTR)			•											

Ticker/Symbol	Product Name	Product				Index Region					Primary Exchange				ISIN
		ETF	ETN	Futures	Options	Global	Americas	Europe/ Africa	Asia Pacific	Americas	Europe/ Africa	Asia Pacific			
<b>MSCI New Zealand IMI 25/50</b>															
ENZL US	iShares MSCI New Zealand ETF	•							•	•				US4642891232	
<b>MSCI Norway Index</b>															
FMNW	EUREX MSCI Norway (USD/NTR)			•				•		•					
<b>MSCI Norway IMI 25/50</b>															
ENOR US	iShares MSCI Norway ETF	•						•		•				US46429B4995	
NORW US	Global X MSCI Norway ETF	•						•		•				US37950E7470	
<b>MSCI All Portugal Plus 25/50 Index</b>															
PGAL US	Global X MSCI Portugal ETF	•						•		•				US37950E1929	
<b>MSCI Singapore Index</b>															
EWS US	iShares MSCI Singapore ETF	•						•		•				US4642866739	
FMSI	EUREX MSCI Singapore (USD/NTR)			•				•		•					
MSN	HKEX MSCI Singapore (USD/NTR)			•				•				•			
QZ	SGX MSCI Singapore (SGD/Pr)			•				•				•			
QZ	SGX MSCI Singapore (SGD/Pr)				•			•				•			
NSP	SGX MSCI Singapore (USD/NTR)			•				•				•			
SGPDU SW	UBS ETF - MSCI Singapore UCITS ETF	•						•		•				LU1169825954	
<b>MSCI Singapore Free Index</b>															
MGN	HKEX MSCI Singapore Free (USD/NTR)			•				•				•			
MSG	HKEX MSCI Singapore Free (SGD/Pr)			•				•				•			
<b>MSCI Singapore IMI</b>															
O9A SP	Xtrackers MSCI Singapore IM Index UCITS ETF	•						•				•		LU0659578842	
3065 HK	Xtrackers MSCI Singapore IM TRN Index UCITS ETF DR	•						•				•		LU0755279428	
<b>MSCI Spain Index</b>															
CS1 FP	Amundi ETF MSCI Spain UCITS ETF	•						•		•				FR0010655746	
C033 GR	ComStage MSCI Spain TRN UCITS ETF	•						•		•				LU1104577314	
FMSF	EUREX MSCI Spain (EUR/NTR)			•				•		•					
TBND185 IT	Tachlit Spain MSCI NTR NIS 0a'		•					•		•				IL0011356313	
<b>MSCI Spain 25/50 index</b>															
EWP US	iShares MSCI Spain ETF	•						•		•				US4642867646	
<b>MSCI Sweden index</b>															
FMSD	EUREX MSCI Sweden (USD/NTR)			•				•		•					
EWD US	iShares MSCI Sweden ETF	•						•		•				US4642867562	
<b>MSCI Switzerland Index</b>															
CSW FP	Amundi ETF MSCI Switzerland UCITS ETF	•						•		•				FR0010655753	
CSWC FP	Amundi ETF MSCI Switzerland UCITS ETF	•						•		•				FR0010871145	
FMSZ	EUREX MSCI Switzerland (USD/NTR)			•				•		•					
MSH	ICE Futures Europe MSCI Switzerland (CHF/NTR)			•				•		•					
MSR	ICE Futures Europe MSCI Switzerland (EUR/NTR)			•				•		•					
SWICHA SW	UBS ETF CH - MSCI Switzerland	•						•		•				CH0226274246	
<b>MSCI Switzerland 20/35 Index</b>															
SW2CHB SW	UBS ETF - MSCI Switzerland 20/35 UCITS ETF	•						•		•				LU0977261329	
SW2CHA SW	UBS ETF - MSCI Switzerland 20/35 UCITS ETF	•						•		•				LU0979892907	
SW2UKD SW	UBS ETF MSCI Switzerland 20/35 UCITS ETF	•						•		•				LU1107560036	
<b>MSCI Switzerland 25/50 Index</b>															
EWL US	iShares MSCI Switzerland ETF	•						•		•				US4642867497	
<b>MSCI UK Index</b>															
CU1 FP	Amundi ETF MSCI UK UCITS ETF	•						•		•				FR0010655761	
FMUK	EUREX MSCI UK (GBP/NTR)			•				•		•					
FMDK	EUREX MSCI UK (USD/NTR)			•				•		•					
MUN	ICE Futures Europe MSCI UK (EUR/NTR)			•				•		•					
CSUK SW	iShares MSCI UK UCITS ETF	•						•		•				IE00B539F030	
EWU US	iShares MSCI United Kingdom ETF	•						•		•				US46434V5488	
UC63 LN	UBS ETF MSCI United Kingdom UCITS ETF	•						•		•				LU0937836467	
UC64 LN	UBS ETF MSCI United Kingdom UCITS ETF	•						•		•				LU0950670850	
UKUKD SW	UBS ETF MSCI United Kingdom UCITS ETF	•						•		•				LU1107559533	

Ticker/Symbol	Product Name	Product				Index Region					Primary Exchange			ISIN
		ETF	ETN	Futures	Options	Global	Americas	Europe/ Africa	Asia Pacific	Americas	Europe/ Africa	Asia Pacific		
<b>MSCI UK Small Cap Index</b>														
EWUS US	iShares MSCI United Kingdom Small Cap ETF	•						•		•				US46429B4169
CSUKS SW	iShares MSCI UK Small Cap UCITS ETF	•						•						IE00B3VWLG82
<b>MSCI USA Index</b>														
CU2 FP	Amundi ETF MSCI USA UCITS ETF	•						•						FR0010688275
CU2U FP	Amundi ETF MSCI USA UCITS ETF	•						•						FR0010871152
CMXUS SW	CSIF (IE) MSCI USA Blue UCITS ETF	•						•						IE00BJBYDR19
CBNDDUUS GR	ComStage ETF MSCI USA TRN UCITS ETF	•						•						LU0392495700
XMUS GR	Xtrackers MSCI USA Index UCITS ETF	•						•						LU0274210672
XD9U GR	Xtrackers MSCI USA Index UCITS ETF DR - 1C	•						•						IE00BJ0KDR00
XD9E	Xtrackers MSCI USA UCITS ETF 2C-EUR hedged	•						•						IE00BG04M077
XD9C	Xtrackers MSCI USA UCITS ETF 3C-CHF hedged	•						•						IE00BG04LZ52
ETFUSAC GR	Deka MSCI USA UCITS ETF	•						•						DE000ETFL268
FMGS	EUREX MSCI USA (USD/GTR)			•				•						
FMUS	EUREX MSCI USA (USD/NTR)			•				•						
HMUS LN	HSBC MSCI USA UCITS ETF	•						•						IE00B5WFQ436
MCU	ICE Futures Europe MSCI USA (EUR/NTR)			•				•						
MCV	ICE Futures Europe MSCI USA (USD/NTR)			•				•						
MUN	ICE Futures US MSCI USA (USD/Pr)			•				•						
USS	ICE US MSCI USA (USD/NTR)			•				•						
CSUS SW	iShares MSCI USA UCITS ETF	•						•						IE00B52SFT06
MXUD	Invesco MSCI USA Ucits ETF Dist	•						•						IE00BK5LYT47
USAC FP	Lyxor ETF MSCI USA C-EUR	•						•						FR0011363423
USA FP	Lyxor UCITS ETF MSCI USA EURO	•						•						FR0010296061
PUSA FP	Lyxor UCITS ETF PEA MSCI USA C-EUR	•						•						FR0011869346
PBUS US	PowerShares PureBeta MSCI USA Portfolio	•						•						US73937B2907
SMSUSA GR	Source MSCI USA UCITS ETF	•						•						IE00B60SX170
SYGUS SJ	Sygnia Itrix MSCI USA ETF	•						•						ZAE000249546
USAEUA GR	UBS ETF-MSCI USA UCITS ETF	•						•						LU0136234654
UBU3 GR	UBS Irl ETF plc - MSCI USA UCITS ETF	•						•						IE00B77D4428
USAUKD SW	UBS ETF MSCI USA UCITS ETF	•						•						LU1107559889
USAUK SW	UBS Irl ETF plc - MSCI USA UCITS ETF	•						•						IE00BD08DL65
USAUSW SE	UBS Irl ETF plc - MSCI USA UCITS ETF	•						•						IE00BD4TXS21
UBU3 GR	UBS Irl ETF plc - MSCI USA UCITS ETF	•						•						IE00B77D4428
<b>MSCI USA Large Cap Index</b>														
ETFUSLC GR	Deka MSCI USA LC UCITS ETF	•						•						DE000ETFL094
590007 KS	Miraeasset Securities Miraeasset USA Large Cap ETN H 7		•					•					•	KRG592100074
<b>MSCI USA Mid Cap Index</b>														
ETFUSMC GR	Deka MSCI USA MC UCITS ETF	•						•						DE000ETFL276
590008 KS	Miraeasset Securities Miraeasset USA Mid Cap ETN H 8		•					•					•	KRG592100082
<b>MSCI USA Small Cap Index</b>														
CSUSS SW	iShares MSCI USA Small Cap UCITS ETF	•						•						IE00B3VWM098
MUS	ICE Futures US MSCI USA Small Cap (USD/Pr)		•					•						
PBSM US	PowerShares PureBeta MSCI USA Small Cap Portfolio	•						•					•	US73937B2824
<b>MSCI USA Growth Index</b>														
MRG	ICE Futures US MSCI USA Growth (USD/Pr)			•				•						
<b>MSCI USA Value Index</b>														
MCU	ICE Futures US MSCI USA Value (USD/NTR)			•				•						
UBU5 GR	UBS Irl ETF plc - MSCI USA Value UCITS ETF	•						•						IE00B78JSG98
<b>Domestic Equity Indexes</b>														
<b>MSCI US REIT Index</b>														
182480 KS	MiraeAsset Tiger Synth-MSCI US REIT ETF H	•						•					•	KR7182480004
<b>MSCI US Investable Market Materials 25/50 Index</b>														
VAW US	Vanguard Materials ETF	•						•						US92204A8018
<b>MSCI US Investable Market Consumer Discretionary 25/50 Index</b>														
VCR US	Vanguard Consumer Discretionary ETF	•						•						US92204A1088

Ticker/Symbol	Product Name	Product				Index Region					Primary Exchange				ISIN
		ETF	ETN	Futures	Options	Global	Americas	Europe/ Africa	Asia Pacific	Americas	Europe/ Africa	Asia Pacific			
<b>MSCI US Investable Market Consumer Staples 25/50 Index</b>															
VDC US	Vanguard Consumer Staples ETF	•				•				•				US92204A2078	
<b>MSCI US Investable Market Energy 25/50 Index</b>															
VDE US	Vanguard Energy ETF	•				•				•				US92204A3068	
<b>MSCI US Investable Market Financials 25/50 Index</b>															
VFH US	Vanguard Financials ETF	•				•				•				US92204A4058	
<b>MSCI US Investable Market Information Technology 25/50 Index</b>															
VTG US	Vanguard Information Technology ETF	•				•				•				US92204A7028	
<b>MSCI US Investable Market Health Care 25/50 Index</b>															
VHT US	Vanguard Health Care ETF	•				•				•				US92204A5048	
<b>MSCI US Investable Market Industrials 25/50 Index</b>															
VIS US	Vanguard Industrials ETF	•				•				•				US92204A6038	
<b>MSCI US Investable Market Communication Services 25/50 Index</b>															
VOX US	Vanguard Communication Services ETF	•				•				•				US92204A8844	
<b>MSCI USA IMI Real Estate 25/50 Index</b>															
VNQ US	Vanguard REIT ETF	•				•				•				US9229085538	
<b>MSCI US Investable Market Utilities 25/50 Index</b>															
VPU US	Vanguard Utilities ETF	•				•				•				US92204A8760	
<b>Sector Indexes</b>															
<b>MSCI Europe Banks Index</b>															
CB5 FP	Amundi ETF MSCI Europe Banks UCITS ETF	•								•				FR0010688176	
<b>MSCI Europe Consumer Discretionary Index</b>															
ME0	ICE Futures Europe MSCI Europe Consumer Discretionary (EUR/NTR)			•				•				•			
STR FP	SPDR MSCI Europe Consumer Discretionary UCITS ETF	•						•				•		FR0000001752	
<b>MSCI Europe Consumer Staples Index</b>															
ME1	ICE Futures Europe MSCI Europe Consumer Staples (EUR/NTR)			•				•				•			
STS FP	SPDR MSCI Europe Consumer Staples UCITS ETF	•						•				•		FR0000001745	
<b>MSCI Europe Energy Index</b>															
ANRJ FP	Amundi ETF MSCI Europe Energy UCITS ETF	•						•				•		FR0010930644	
ME2	ICE Futures Europe MSCI Europe Energy (EUR/NTR)			•				•				•			
STN FP	SPDR MSCI Europe Energy ETF UCITS ETF	•						•				•		FR0000001810	
<b>MSCI Europe Financials Index</b>															
EUFN US	iShares MSCI Europe Financials Sector Index Fund	•						•				•		US4642891802	
ME3	ICE Futures Europe MSCI Europe Financials (EUR/NTR)			•				•				•			
STZ FP	SPDR MSCI Europe Financials UCITS ETF	•						•				•		FR0000001703	
<b>MSCI Europe Health Care Index</b>															
CH5 FP	Amundi ETF MSCI Europe Healthcare UCITS ETF	•						•				•		FR0010688192	
ME4	ICE Futures Europe MSCI Europe Health Care (EUR/NTR)			•				•				•			
STW FP	SPDR MSCI Europe Health Care UCITS ETF	•						•				•		FR0000001737	
<b>MSCI Europe Industrials Index</b>															
ME5	ICE Futures Europe MSCI Europe Industrials (EUR/NTR)			•				•				•			
STQ FP	SPDR MSCI Europe Industrials UCITS ETF	•						•				•		FR0000001778	
<b>MSCI Europe Information Technology Index</b>															
ME6	ICE Futures Europe MSCI Europe IT (EUR/NTR)			•				•				•			
STK FP	SPDR MSCI Europe Information Technology ETF UCITS ETF	•						•				•		FR0000001695	
<b>MSCI Europe Materials Index</b>															
ME7	ICE Futures Europe MSCI Europe Materials (EUR/NTR)			•				•				•			
STP FP	SPDR MSCI Europe Materials UCITS ETF	•						•				•		FR0000001794	
<b>MSCI Europe Real Estate Index</b>															
MF0	ICE Futures Europe MSCI Europe Real Estate (EUR/NTR)			•				•				•			
<b>MSCI Europe Telecommunication Services Index</b>															
ME8	ICE Futures Europe MSCI Europe Telecommunication Services (EUR/NTR)			•				•				•			
STT FP	SPDR MSCI Europe Telecommunication Services UCITS ETF	•						•				•		FR0000001687	

Ticker/Symbol	Product Name	Product				Index Region					Primary Exchange				ISIN
		ETF	ETN	Futures	Options	Global	Americas	Europe/ Africa	Asia Pacific	Americas	Europe/ Africa	Asia Pacific			
<b>MSCI Europe Utilities Index</b>															
ME9	ICE Futures Europe MSCI Europe Utilities (EUR/NTR)			•			•			•					
STU FP	SPDR MSCI Europe Utilities UCITS ETF	•					•			•				FR0000001646	
<b>MSCI World Consumer Discretionary Index</b>															
FMMD	EUREX MSCI World Consumer Discretionary (USD/NTR)			•	•					•					
XDWC GR	Xtrackers MSCI World Consumer Discretionary Index UCITS ETF DR	•			•					•				IE00BM67HP23	
MWG	ICE Futures Europe MSCI World Consumer Discretionary (USD/NTR)			•	•					•					
WCDS	iShares MSCI World Consumer Discretionary Sector UCITS ETF USD (Dist)	•			•					•				IE00BJ5JP212	
CODW FP	Lyxor ETF MSCI World Consumer Discretionary TR	•			•					•				LU0533032008	
DISW LN	Lyxor ETF MSCI World Consumer Discretionary TR - USD	•			•					•				LU0533032180	
WCOD LN	SPDR MSCI World Consumer Discretionary UCITS ETF	•			•					•				IE00BYTRR640	
<b>MSCI World Consumer Staples Index</b>															
XDWS GR	Xtrackers MSCI World Consumer Staples Index UCITS ETF DR	•			•					•				IE00BM67HN09	
MWB	ICE Futures Europe MSCI World Consumer Staples (USD/NTR)			•	•					•					
WCSS	iShares MSCI World Consumer Staples Sector UCITS ETF USD (Dist)	•			•					•				IE00BJ5JP329	
FMMS	EUREX MSCI World Consumer Staples (USD/NTR)			•	•					•					
STAW LN	Lyxor ETF MSCI World Consumer Staples TR - USD	•			•					•				LU0533032347	
COSW FP	Lyxor ETF MSCI World Consumer Staples TR	•			•					•				LU0533032263	
WCOS LN	SPDR MSCI World Consumer Staples UCITS ETF	•			•					•				IE00BYTRR756	
<b>MSCI World Energy Index</b>															
CWE FP	Amundi ETF MSCI World Energy UCITS ETF	•			•					•				FR0010791145	
CWEU FP	Amundi ETF MSCI World Energy UCITS ETF	•			•					•				FR0010871178	
XDWO GR	Xtrackers MSCI World Energy Index UCITS ETF DR	•			•					•				IE00BM67HM91	
FMMR	EUREX MSCI World Energy (USD/NTR)			•	•					•					
MWE	ICE Futures Europe MSCI World Energy (USD/NTR)			•	•					•					
WENS	iShares MSCI World Energy Sector UCITS ETF USD (Dist)	•			•					•				IE00BJ5JP105	
NRGW FP	Lyxor ETF MSCI World Energy TR	•			•					•				LU0533032420	
NRGW LN	Lyxor ETF MSCI World Energy TR - USD	•			•					•				LU0533032776	
WNRG LN	SPDR MSCI World Energy UCITS ETF	•			•					•				IE00BYTRR863	
<b>MSCI World Financials Index</b>															
CWF FP	Amundi ETF MSCI World Financials UCITS ETF	•			•					•				FR0010791152	
CWFU FP	Amundi ETF MSCI World Financials UCITS ETF	•			•					•				FR0010871194	
FMMF	EUREX MSCI World Financials (USD/NTR)			•	•					•					
XDWF GR	Xtrackers MSCI World Financials Index UCITS ETF DR	•			•					•				IE00BM67HL84	
MWN	ICE Futures Europe MSCI World Financials (USD/NTR)			•	•					•					
FINW FP	Lyxor ETF MSCI World Financials TR	•			•					•				LU0533032859	
FINW LN	Lyxor ETF MSCI World Financials TR - USD	•			•					•				LU0533033071	
WFIN LN	SPDR MSCI World Financials UCITS ETF	•			•					•				IE00BYTRR970	
<b>MSCI World Health Care Index</b>															
XDWH GR	Xtrackers MSCI World Health Care Index UCITS ETF DR	•			•					•				IE00BM67HK77	
MWO	ICE Futures Europe MSCI World Health Care (USD/NTR)			•	•					•					
WHCS	iShares MSCI World Health Care Sector UCITS ETF USD (Dist)	•			•					•				IE00BJ5JNZ06	
FMMH	EUREX MSCI World Health Care (USD/NTR)			•	•					•					
HLTW FP	Lyxor ETF MSCI World Health Care TR	•			•					•				LU0533033238	
HLTW LN	Lyxor ETF MSCI World Health Care TR - USD	•			•					•				LU0533033311	
WHEA LN	SPDR MSCI World Health Care UCITS ETF	•			•					•				IE00BYTRR894	
<b>MSCI World Industrials Index</b>															
XDWI GR	Xtrackers MSCI World Industrials Index UCITS ETF DR	•			•					•				IE00BM67HV82	
MWI	ICE Futures Europe MSCI World Industrials (USD/NTR)			•	•					•					
FMMI	EUREX MSCI World Industrials (USD/NTR)			•	•					•					
INDW FP	Lyxor ETF MSCI World Industrials TR	•			•					•				LU0533033402	
INDW LN	Lyxor ETF MSCI World Industrials TR - USD	•			•					•				LU0533033584	
WNDU LN	SPDR MSCI World Industrials UCITS ETF	•			•					•				IE00BYTRRC02	



Ticker/Symbol	Product Name	Product				Index Region					Primary Exchange				ISIN
		ETF	ETN	Futures	Options	Global	Americas	Europe/ Africa	Asia Pacific	Americas	Europe/ Africa	Asia Pacific			
<b>MSCI World Information Technology Index</b>															
XDWT GR	Xtrackers MSCI World Information Technology Index UCITS ETF DR	•				•						•			IE00BM67HT60
MWV	ICE Futures Europe MSCI World IT (USD/NTR)			•		•						•			
WITS	iShares MSCI World Information Technology Sector UCITS ETF USD (Dist)	•				•						•			IE00BJ5JNY98
FMML	EUREX MSCI World Information Technology (USD/NTR)			•		•						•			
TNOW FP	Lyxor ETF MSCI World Information Technology TR	•				•						•			LU0533033667
TNOW LN	Lyxor ETF MSCI World Information Technology TR - USD	•				•						•			LU0533033741
WTEC LN	SPDR MSCI World Technology UCITS ETF	•				•						•			IE00BYTRRD19
<b>MSCI World Materials Index</b>															
XDWM GR	Xtrackers MSCI World Materials Index UCITS ETF DR	•				•						•			IE00BM67HS53
MWM	ICE Futures Europe MSCI World Materials (USD/NTR)			•		•						•			
FMMT	EUREX MSCI World Materials (USD/NTR)			•		•						•			
MATW FP	Lyxor ETF MSCI World Materials TR	•				•						•			LU0533033824
MATW LN	Lyxor ETF MSCI World Materials TR - USD	•				•						•			LU0533034046
WMAT LN	SPDR MSCI World Materials UCITS ETF	•				•						•			IE00BYTRRF33
<b>MSCI World Real Estate Index</b>															
MWS	ICE Futures Europe MSCI World Real Estate (USD/NTR)			•		•						•			
FMMW	EUREX MSCI World Real Estate (USD/NTR)			•		•						•			
<b>MSCI World Communication Services Index</b>															
FMMC	EUREX MSCI World Communication Services (USD/NTR)			•		•						•			
XWTS GR	Xtrackers MSCI World Telecom Services Index UCITS ETF DR	•				•						•			IE00BM67HR47
MWT	ICE Futures Europe MSCI World Telecommunication Services (USD/NTR)			•		•						•			
TELW FP	Lyxor ETF MSCI World Telecommunication Services TR	•				•						•			LU0533034129
TELW LN	Lyxor ETF MSCI World Telecommunication Services TR - USD	•				•						•			LU0533034392
WTEL LN	SPDR MSCI World Telecommunications UCITS ETF	•				•						•			IE00BYTRRG40
<b>MSCI World Utilities Index</b>															
XDWU GR	Xtrackers MSCI World Utilities Index UCITS ETF DR	•				•						•			IE00BM67HQ30
MWW	ICE Futures Europe MSCI World Utilities (USD/NTR)			•		•						•			
FMMQ	EUREX MSCI World Utilities (USD/NTR)			•		•						•			
UTIW LN	Lyxor ETF MSCI World Utilities TR - USD	•				•						•			LU0533034632
UTLW FP	Lyxor ETF MSCI World Utilities TR	•				•						•			LU0533034558
WUTI LN	SPDR MSCI World Utilities UCITS ETF	•				•						•			IE00BYTRRH56
<b>MSCI EMU Communication Services Index</b>															
EMO	ICE EU MSCI EMU Communication Services (EUR/NTR)	•				•						•			
<b>MSCI EMU Consumer Staples Index</b>															
EMS	ICE EU MSCI EMU Consumer Services (EUR/NTR)	•				•						•			
<b>MSCI EMU Consumer Discretionary Index</b>															
EMY	ICE EU MSCI EMU Consumer Discretionary (EUR/NTR)	•				•						•			
<b>MSCI EMU Energy Index</b>															
EMN	ICE EU MSCI EMU Energy (EUR/NTR)	•				•						•			
<b>MSCI EMU Financials Index</b>															
EMF	ICE EU MSCI EMU Financials (EUR/NTR)	•				•						•			
<b>MSCI EMU Health Care Index</b>															
EMH	ICE EU MSCI EMU Health Care (EUR/NTR)	•				•						•			
<b>MSCI EMU Industrials Index</b>															
EMI	ICE EU MSCI EMU Industrials (EUR/NTR)	•				•						•			
<b>MSCI EMU Information Technology Index</b>															
EMT	ICE EU MSCI EMU Information Technology (EUR/NTR)	•				•						•			
<b>MSCI EMU Materials Index</b>															
EMM	ICE EU MSCI EMU Materials (EUR/NTR)	•				•						•			
<b>MSCI EMU Real Estate Index</b>															
EMR	ICE EU MSCI EMU Real Estate (EUR/NTR)	•				•						•			
<b>MSCI EMU Utilities Index</b>															
EMU	ICE EU MSCI EMU Utilities (EUR/NTR)	•				•						•			

Ticker/Symbol	Product Name	Product				Index Region					Primary Exchange				ISIN
		ETF	ETN	Futures	Options	Global	Americas	Europe/ Africa	Asia Pacific	Americas	Europe/ Africa	Asia Pacific			
<b>MSCI Global China Infrastructure Exposure</b>															
OBOR US	KraneShares MSCI One Belt One Road Index ETF	•				•						•			US5007678684
<b>MSCI USA Energy Index</b>															
XUEN GR	Xtrackers MSCI USA Energy Index UCITS ETF DR	•					•						•		IE00BCHWNS19
<b>MSCI USA Financials Index</b>															
XUFN GR	Xtrackers MSCI USA Financials Index UCITS ETF DR	•					•						•		IE00BCHWNT26
<b>MSCI USA Consumer Discretionary Index</b>															
XUCD GR	Xtrackers MSCI USA Consumer Discretionary Index UCITS ETF DR	•					•						•		IE00BGQYRR35
<b>MSCI USA Consumer Staples Index</b>															
XUCS GR	Xtrackers MSCI USA Consumer Staples Index UCITS ETF DR	•					•						•		IE00BGQYRQ28
<b>MSCI USA Healthcare Index</b>															
XUHC GR	Xtrackers MSCI USA Health Care Index UCITS ETF DR	•					•						•		IE00BCHWNW54
590016 KS	Miraeasset Securites Miraeasset MSCI USA Healthcare ETN H 15		•				•							•	KRG592100165
<b>MSCI USA Information Technology Index</b>															
XUTC GR	Xtrackers MSCI USA Information Technology Index UCITS ETF DR	•					•						•		IE00BGQYRS42
<b>MSCI US REIT Index</b>															
BBRE US	JPMorgan BetaBuilders MSCI US REIT ETF	•					•						•		US46641Q7381
<b>MSCI USA Banks 20/35 Capped Index</b>															
XUFB LN	Xtrackers MSCI USA Banks UCITS ETF	•					•						•		IE00BDVPTJ63
<b>MSCI USA IMI Communication Services 25/50 Index</b>															
FCOM US	Fidelity MSCI Communication Services Index ETF	•					•						•		US3160928731
<b>MSCI USA IMI Consumer Discretionary Index</b>															
FDIS US	Fidelity MSCI Consumer Discretionary Index ETF	•					•						•		US3160922049
<b>MSCI USA IMI Energy Index</b>															
FENY US	Fidelity MSCI Energy Index ETF	•					•						•		US3160924029
<b>MSCI USA IMI Health Care Index</b>															
FHLC US	Fidelity MSCI Health Care Index ETF	•					•						•		US3160926008
<b>MSCI USA IMI Industrials Index</b>															
FIDU US	Fidelity MSCI Industrials Index ETF	•					•						•		US3160927097
<b>MSCI USA IMI Materials Index</b>															
FMAT US	Fidelity MSCI Materials Index ETF	•					•						•		US3160928814
<b>MSCI USA IMI Financials Index</b>															
FNCL US	Fidelity MSCI Financials Index ETF	•					•						•		US3160925018
<b>MSCI USA IMI Consumer Staples Index</b>															
FSTA US	Fidelity MSCI Consumer Staples Index ETF	•					•						•		US3160923039
<b>MSCI USA IMI Information Technology Index</b>															
FTEC US	Fidelity MSCI Information Technology Index ETF	•					•						•		US3160928087
020016 TT	President MSCI USA IMI Information Technology Index ETN		•				•							•	TW0000200161
<b>MSCI USA IMI Utilities Index</b>															
FUTY US	Fidelity MSCI Utilities Index ETF	•					•						•		US3160928657
<b>MSCI USA IMI Real Estate Index</b>															
FREL US	Fidelity MSCI Real Estate Index ETF	•					•						•		US3160928574
<b>MSCI UK IMI Liquid Real Estate Index</b>															
UKRE LN	iShares MSCI Target UK Real Estate UCITS ETF	•					•						•		IE00BRHZ0398

Ticker/Symbol	Product Name	Product				Index Region				Primary Exchange				ISIN
		ETF	ETN	Futures	Options	Global	Americas	Europe/ Africa	Asia Pacific	Americas	Europe/ Africa	Asia Pacific		
<b>Emerging Markets Indexes</b>														
<b>Global Indexes</b>														
<b>MSCI Emerging Markets Index</b>														
AEEM FP	Amundi ETF MSCI Emerging Markets UCITS ETF - A	•				•								FR0010959676
AEME FP	Amundi Index MSCI Emerging Markets UCITS ETF DR	•				•								LU1437017350
AEMD GR	Amundi Index MSCI Emerging Markets UCITS ETF DR	•				•								LU1737652583
PAEEM FP	Amundi ETF PEA MSCI Emerging Markets UCITS ETF - EUR	•				•								FR0013412020
AUEM FP	Amundi ETF MSCI Emerging Markets UCITS ETF - USD	•				•								FR0010959692
ZEM CN	BMO MSCI Emerging Markets Index ETF	•				•				•				CA05576Y1088
MXEF	CBOE MSCI Emerging Markets (USD/Pr)				•	•				•				
E127 GR	ComStage ETF MSCI Emerging Markets TRN UCITS ETF	•				•				•				LU0635178014
XMEM GR	Xtrackers MSCI Emerging Markets Index UCITS ETF	•				•				•				LU0292107645
XMME GR	Xtrackers MSCI Emerging Markets Index UCITS ETF	•				•				•				IE00BTJRM3P5
ETFEMMA GR	Deka MSCI Emerging Markets UCITS ETF	•				•				•				DE000ETFL342
FMEN	EUREX MSCI Emerging Markets (EUR/NTR)			•		•				•				
OMEN	EUREX MSCI Emerging Markets (EUR/NTR)				•	•				•				
FMEM	EUREX MSCI Emerging Markets (USD/NTR)			•		•				•				
OMEM	EUREX MSCI Emerging Markets (USD/NTR)				•	•				•				
FMEF	EUREX MSCI Emerging Markets (USD/Pr)			•		•				•				
OMEF	EUREX MSCI Emerging Markets (USD/Pr)				•	•				•				
195980 KS	Hanwha ARIRANG Synth-MSCI Emerging Markets ETF H	•				•				•				KR7195980008
HMEM LN	HSBC MSCI Emerging Markets UCITS ETF	•				•				•				IE00B5SSQT16
MEM	HKEX MSCI Emerging Markets (USD/Pr)			•		•				•				
EMN	HKEX MSCI Emerging Markets (USD/NTR)			•		•				•				
MSM	ICE Futures Europe MSCI Emerging Markets (EUR/NTR)			•		•				•				
MCQ	ICE Futures Europe MSCI Emerging Markets (USD/NTR)			•		•				•				
MMR	ICE Futures US MSCI Emerging Markets (EUR/NTR)			•		•				•				
MMN	ICE Futures US MSCI EM (USD/NTR)			•		•				•				
MME	ICE Futures US MSCI EM (USD/Pr)			•		•				•				
EEM US	iShares MSCI Emerging Markets ETF	•				•				•				US4642872349
XEM CN	iShares MSCI Emerging Markets ETF	•				•				•				CA46430E1025
SEMA LN	iShares MSCI Emerging Markets UCITS ETF (Acc)	•				•				•				IE00B4L5YC18
IEEM LN	iShares MSCI Emerging Markets UCITS ETF (Inc)	•				•				•				IE00B0M63177
IEM	iShares MSCI Emerging Markets ETF AUD	•				•				•				AU000000IEM3
9022 HK	iShares MSCI Emerging Markets ETF (HK)	•				•				•				HK0000625209
1681 JP	Listed Index Fund International Emerging Countries Equity - MSCI Emerging	•				•				•				JP3047130004
LYLEM SW	Lyxor ETF MSCI Emerging Markets - NTR C USD	•				•				•				FR0010435297
LEM FP	Lyxor ETF MSCI Emerging Markets/France	•				•				•				FR0010429068
PLEM FP	Lyxor UCITS ETF PEA MSCI Emerging Markets C-EUR	•				•				•				FR0011440478
2520 JP	NEXT FUNDS Emerging Market Equity MSCI-EM Unhedged ETF	•				•				•				JP3048740009
291890 KS	Samsung KODEX SGX MSCI EM Futures ETF H	•				•				•				KR7291890002
MXFS LN	Source MSCI Emerging Markets UCITS ETF	•				•				•				IE00B3DWVS88
SPYM GR	SPDR MSCI Emerging Markets UCITS ETF	•				•				•				IE00B469F816
STXEMG SJ	Satrix MSCI Emerging Markets ETF	•				•				•				ZAE000246633
DNEA	SGX MSCI Emerging Markets (USD/Pr)			•		•				•				
ANEA	SGX MSCI Emerging Markets (USD/NTR)			•		•				•				
TMCSI52 IT	Tachlit MSCI Emerging Markets NTR 4Da		•			•				•				IL0011226474
EMMUSC SW	UBS ETF-MSCI Emerging Markets UCITS ETF	•				•				•				LU0950674175
EMMUSA SW	UBS ETF MSCI Emerging Markets UCITS ETF	•				•				•				LU0480132876
EGUSAS SW	UBS ETFs plc - MSCI Emerging Markets SF UCITS ETF	•				•				•				IE00B3Z3FS74
EMMUKD SW	UBS ETF-MSCI Emerging Markets UCITS ETF	•				•				•				LU1126036976

Ticker/Symbol	Product Name	Product				Index Region					Primary Exchange				ISIN
		ETF	ETN	Futures	Options	Global	Americas	Europe/ Africa	Asia Pacific	Americas	Europe/ Africa	Asia Pacific			
<b>MSCI Emerging Markets IMI</b>															
IEMG US	iShares Core MSCI Emerging Markets ETF	•				•				•					US46434G1031
EIMI LN	iShares Core MSCI Emerging Markets IMI UCITS ETF	•				•					•				IE00BKM4GZ66
XEC CN	iShares Core MSCI Emerging Markets IMI Index ETF	•				•				•					CA46434U1021
XEC.U CN	iShares Core MSCI Emerging Markets IMI Index ETF USD	•				•				•					CA46434U2011
1658 JP	iShares Core MSCI Emerging Markets IMI ETF	•				•						•			JP3048560001
EIMU LN	iShares Core MSCI Emerging Markets IMI UCITS ETF	•				•					•				IE00BD45KH83
<b>MSCI Emerging Markets Small Cap Index</b>															
IEMS LN	iShares MSCI EM Small Cap UCITS ETF	•				•					•				IE00B3F81G20
EEMS US	iShares MSCI Emerging Markets Small Cap ETF	•				•				•					US4642864759
SPYX GR	SPDR MSCI Emerging Markets Small Cap UCITS ETF	•				•				•					IE00B48X4842
<b>MSCI Emerging Markets Growth Index</b>															
FMMG	EUREX MSCI EM Growth (USD/NTR)			•		•					•				
<b>MSCI Emerging Markets Value Index</b>															
FMMV	EUREX MSCI EM Value (USD/NTR)			•		•					•				
<b>Regional Indexes</b>															
<b>MSCI BRIC Index</b>															
MCC	ICE Futures Europe MSCI BRIC (USD/NTR)			•		•					•				
BKF US	iShares MSCI BRIC ETF	•				•					•				US4642866572
<b>MSCI EM Asia Index</b>															
AASI FP	Amundi ETF MSCI EM Asia UCITS ETF - EUR	•								•		•			FR0011020965
AASU FP	Amundi ETF MSCI EM Asia UCITS ETF - USD	•								•		•			FR0011018316
PAASI FP	Amundi ETF PEA MSCI Emerging Asia UCITS ETF - EUR	•								•		•			FR0013412012
XMAS GR	Xtrackers MSCI EM Asia Index UCITS ETF	•								•		•			LU0292107991
FMEA	EUREX MSCI EM Asia (USD/NTR)			•						•		•			
OMEA	EUREX MSCI EM Asia (USD/NTR)				•					•		•			
EAN	HKEX MSCI EM Asia (USD/NTR)			•						•			•		
MCB	ICE Futures Europe MSCI EM Asia (USD/NTR)			•						•		•			
ASN	ICE Futures US MSCI EM Asia (USD/NTR)			•						•		•			
ASE	ICE Futures US MSCI EM Asia (USD/Pr)			•						•		•			
CSEMAS SW	iShares MSCI EM Asia UCITS ETF	•								•		•			IE00B5L8K969
2802 HK	iShares MSCI Emerging Asia ETF	•								•		•			HK0000051851
LCUA GR	Lyxor MSCI EM Asia UCITS ETF	•								•		•			LU1781541849
SPYA GR	SPDR MSCI EM Asia UCITS ETF	•								•		•			IE00B466KX20
CNEA	SGX MSCI EM Asia (USD/NTR)			•						•			•		
<b>MSCI EM Asia Custom Capped Index</b>															
EEMA US	iShares MSCI Emerging Markets Asia ETF	•								•		•			US4642864262
<b>MSCI EM Asia ex China Index</b>															
MAC	HKEX MSCI EM Asia ex China (USD/NTR)			•						•			•		
NEAXC	SGX MSCI EM Asia ex China (USD/NTR)			•						•			•		
<b>MSCI EM Asia ex Korea Index</b>															
FMXX	EUREX MSCI EM Asia ex Korea (USD/NTR)			•						•		•			
MAK	HKEX MSCI EM Asia ex Korea (USD/NTR)			•						•			•		
NEXK	SGX MSCI EM ex Korea (USD/NTR)			•						•			•		
<b>MSCI EM ex China Index</b>															
EMXC US	iShares MSCI Emerging Markets ex China ETF	•				•					•				US46434G7640
KEMX US	KraneShares MSCI Emerging Markets ex China Index ETF	•				•					•				US5007677694
EMXC LN	Lyxor MSCI Emerging Markets Ex China UCITS ETF - Acc	•				•					•		•		LU2009202107
MXC	HKEX MSCI EM ex China (USD/NTR)			•						•			•		
NEXC	SGX MSCI EM ex China (USD/NTR)			•						•			•		
<b>MSCI EM ex Korea</b>															
MXK	HKEX MSCI EM ex Korea (USD/NTR)			•						•			•		
<b>MSCI EM Far East Index</b>															
HMFE LN	HSBC MSCI EM Far East UCITS ETF	•								•		•			IE00B5LP3W10
<b>MSCI EM Eastern Europe ex Russia Index</b>															
CE9 FP	Amundi ETF MSCI Eastern Europe ex Russia UCITS ETF - EUR	•								•		•			FR0010717074

Ticker/Symbol	Product Name	Product				Index Region					Primary Exchange				ISIN
		ETF	ETN	Futures	Options	Global	Americas	Europe/ Africa	Asia Pacific	Americas	Europe/ Africa	Asia Pacific			
CE9U FP	Amundi ETF MSCI Eastern Europe Ex Russia UCITS ETF - EUR	•						•				•			FR0010871129
CEC FP	Lyxor MSCI Eastern Europe ex Russia UCITS ETF	•						•				•			FR0010204073
<b>MSCI EM Eastern Europe 10/40 Index</b>															
IEER LN	iShares MSCI Eastern Europe Capped UCITS ETF	•				•						•			IE00B0M63953
<b>MSCI EM EMEA Index</b>															
FMEE	EUREX MSCI EM EMEA (USD/NTR)			•				•				•			
OMEE	EUREX MSCI EM EMEA (USD/NTR)				•			•				•			
MEE	HKEX MSCI EM EMEA (USD/NTR)			•					•					•	
MCZ	ICE Futures Europe MSCI EM EMEA (USD/NTR)			•				•				•			
MMM	ICE Futures US MSCI EM EMEA (USD/NTR)			•				•			•				
NEMEA	SGX EM EMEA (USD/NTR)			•				•						•	
<b>MSCI EM EMEA ex Turkey Index</b>															
FMXT	EUREX MSCI EM EMEA ex Turkey (USD/NTR)			•				•				•			
<b>MSCI EFM Africa Top 50 Capped Index</b>															
XMKA GR	Xtrackers MSCI EFM Africa TOP 50 Capped TRN Index UCITS ETF	•						•				•			LU0592217524
<b>MSCI EM Latin America Index</b>															
ALAT FP	Amundi ETF MSCI Em Latin America UCITS ETF - EUR	•						•				•			FR0011020973
ALAU FP	Amundi ETF MSCI EM Latin America UCITS ETF - USD	•						•				•			FR0011018324
PALAT FP	Amundi ETF PEA MSCI EM Latin America UCITS ETF - EUR	•						•				•			FR0013412004
XMLA GR	Xtrackers MSCI EM Latin America Index UCITS ETF	•						•				•			LU0292108619
FMEL	EUREX MSCI EM Latin America USD/NTR)			•				•				•			
OMEL	EUREX MSCI EM Latin America USD/NTR)				•			•				•			
HMLD LN	HSBC MSCI EM Latin America UCITS ETF	•						•				•			IE00B4TS3815
MEL	HKEX MSCI EM LatAm (USD/NTR)				•				•				•		
MCF	ICE Futures Europe MSCI EM Lat Am (USD/NTR)			•				•				•			
MML	ICE Futures US MSCI EM Lat Am (USD/NTR)			•				•			•				
MLE	ICE Futures US MSCI EM Latin America (USD/Pr)			•				•			•				
LTAM LN	iShares MSCI EM Latin America UCITS ETF (Dist)	•						•				•			IE00B27YCK28
LTM FP	Lyxor ETF MSCI EM Latin America	•						•				•			FR0010410266
NLATA	SGX EM Latin America (USD/NTR)	•						•						•	
<b>MSCI EM Latin America ex Brazil Index</b>															
FMXB	EUREX MSCI EM Latam ex Brazil (USD/NTR)			•				•				•			
<b>MSCI Select OECD Emerging Markets GDP Weighted Index</b>															
LEMO FP	Lyxor UCITS ETF MSCI Select OECD Emerging Markets GDP - C EUR	•						•				•			FR0011645605
<b>MSCI Select Emerging and Frontier Market Access Index</b>															
EMFM US	Global X MSCI Next Emerging & Frontier ETF	•						•				•			US37950E2182
<b>Country Indexes</b>															
<b>MSCI All Argentina 25/50 Index</b>															
ARGT US	Global X MSCI Argentina ETF	•						•				•			US37950E2596
AGT US	iShares MSCI Argentina and Global Exposure ETF	•						•				•			US46435G2764
FMAR	EUREX MSCI Argentina (USD/NTR)			•				•				•			
<b>MSCI Brazil Index</b>															
BRZ FP	Amundi ETF MSCI Brazil UCITS ETF	•						•				•			FR0010821793
XMBR GR	Xtrackers MSCI Brazil Index UCITS ETF	•						•				•			LU0292109344
XMBR SP	Xtrackers MSCI Brazil Index UCITS ETF DR	•						•				•			LU0455009182
HMBR LN	HSBC MSCI Brazil UCITS ETF	•						•				•			IE00B5W34K94
MCG	ICE Futures Europe MSCI Brazil (USD/NTR)			•				•				•			
RIO FP	Lyxor MSCI Brazil UCITS ETF	•						•				•			FR0010408799
PRIO FP	Lyxor PEA MSCI Brazil UCITS ETF	•						•				•			FR0011869205
IBZL LN	iShares MSCI Brazil UCITS ETF (Dist)	•						•				•			IE00B0M63516
<b>MSCI Brazil Small Cap Index</b>															
EWZS US	iShares MSCI Brazil Small Cap ETF	•						•				•			US4642891315
<b>MSCI Brazil 25/50 Index</b>															
BRZU US	Direxion Daily Brazil Bull 3X Shares	•						•				•			US25459Y5463
EWZ US	iShares MSCI Brazil ETF	•						•				•			US4642864007

Ticker/Symbol	Product Name	Product				Index Region					Primary Exchange				ISIN
		ETF	ETN	Futures	Options	Global	Americas	Europe/ Africa	Asia Pacific	Americas	Europe/ Africa	Asia Pacific			
<b>MSCI Chile Index</b>															
FMCL	EUREX MSCI Chile (USD/NTR)			•		•				•					
<b>MSCI Chile IMI 25/50</b>															
ECH US	iShares MSCI Chile ETF	•				•				•				US4642866408	
<b>MSCI Chile Small Cap Index</b>															
EASCHNV CI	Fondo Mutuo ETF EuroAmerica MSCI Small Cap Chile	•				•				•					
<b>MSCI China Index</b>															
CC1 FP	Amundi ETF MSCI China UCITS ETF	•								•		•		FR0010713784	
ETFCHINA GR	Deka MSCI China UCITS ETF	•								•		•		DE000ETFL326	
FMCN	EUREX MSCI China Free (USD/NTR)			•						•		•			
3040 HK	Horizons MSCI China ETF	•								•			•	HK0000151925	
HMCH LN	HSBC MSCI China UCITS ETF	•								•		•		IE00B44T3H88	
MCHI US	iShares MSCI China ETF	•								•	•			US46429B6719	
2801 HK	iShares MSCI China ETF	•								•			•	HK2801040828	
ICHN NA	iShares MSCI China UCITS ETF (USD Acc)	•								•				IE00BJ5JPG56	
<b>MSCI China A Index</b>															
512990 CH	ChinaAMC MSCI China A ETF	•								•			•		
CASH LN	ETFS-E Fund MSCI China A GO UCITS ETF	•								•		•		IE00BHFDF83	
83118 HK	Harvest MSCI China A Index ETF CNY RQFII	•								•			•	HK0000111283	
310080 KS	KB KBSTAR MSCI China Futures ETF H	•								•			•	KR7310080007	
83118 HK	Harvest MSCI China A Index ETF CNY RQFII	•								•			•	HK0000111283	
310080 KS	KB KBSTAR MSCI China Futures ETF H	•								•			•	KR7310080007	
LCCN LN	Lyxor MSCI China UCITS ETF	•								•		•		LU1841731745	
CNAAP FP	Lyxor Fortune SG MSCI China	•								•		•		FR0011720911	
00703 TT	Taishin MSCI China ETF	•								•			•	TW0000070309	
KBA LN	KraneShares MSCI China A Share UCITS ETF	•								•		•		IE00BJLKF515	
CNUA GY	UBS ETFs plc - MSCI China A SF UCITS ETF (USD) Acc	•								•		•		IE00BKFB6K94	
XCX6 LN	X-trackers MSCI China Index UCITS ETF	•								•		•		LU0514695690	
3055 HK	X-trackers MSCI China TRN Index UCITS ETF DR	•								•		•		LU0514695856	
<b>MSCI China Top 50 Select Index</b>															
CHIL US	Global X MSCI China Large-Cap 50 ETF	•								•	•			US37954Y5666	
<b>MSCI China Free Index</b>															
OMCN	EUREX MSCI China Free (USD/NTR)				•					•		•			
MCN	HKEX MSCI China Free (USD/NTR)			•						•			•		
MCU	HKEX MSCI China Free (USD/Pr)			•						•			•		
MCY	ICE Futures US MSCI China Free (USD/NTR)			•						•	•				
NCH	SGX MSCI China Free (USD/NTR)			•						•			•		
CH	SGX MSCI China Free (USD/Pr)			•						•			•		
CH	SGX MSCI China Free (USD/Pr)				•					•			•		
<b>MSCI China A International Index</b>															
83149 HK	CSOP MSCI China A International ETF	•								•			•	HK0000273489	
512860 CH	HuaAn MSCI China A-share International ETF Feeder Fund	•								•			•		
CNYA LN	iShares MSCI China A UCITS ETF	•								•		•		IE00BQT3WG13	
512920 CH	New China MSCI China A Inclusion Index ETF	•								•	•				
512360 CH	Ping An UOB MSCI China A-share International ETF	•								•			•	CNE100003142	
<b>MSCI China A Inclusion Index</b>															
KBA US	KraneShares Bosera MSCI China A ETF	•								•	•			US5007674055	
83197 HK	China AMC MSCI China A Inclusion Index ETF	•								•			•	HK0000389624	
HMCA LN	HSBC MSCI China A Inclusion UCITS ETF	•								•		•		IE00BF4NQ904	
CNYA US	iShares MSCI China A ETF	•								•	•			US46434V5140	
ASHX US	Xtrackers MSCI China A Inclusion Equity ETF	•								•	•			US2330515238	
00739 TT	Yuanta MSCI China A ETF	•								•			•	TW0000073907	
<b>MSCI China A Inclusion RMB Index</b>															
512160 CH	China Southern MSCI China A Inclusion ETF	•								•			•		
515160 CH	CMF MSCI China A Inclusion RMB Index ETF Fund	•								•			•		
512090 CH	E Fund MSCI China A Inclusion Index ETF	•								•			•	CNE100003159	
512520 CH	Hutai-PineBridge MSCI China A-share Guojitong ETF	•								•			•	CNE100003167	
512180 CH	CCB Principal MSCI China A-share Guojitong ETF	•								•			•	CNE100003183	

Ticker/Symbol	Product Name	Product				Index Region					Primary Exchange				ISIN
		ETF	ETN	Futures	Options	Global	Americas	Europe/ Africa	Asia Pacific	Americas	Europe/ Africa	Asia Pacific			
512280 CH	Invesco Great Wall MSCI China A-share Guojitong ETF	•													
<b>MSCI China A RMB Index</b>															
515780 CH	AXA SPDB MSCI China A RMB Index ETF	•													
515770 CH	CIFM MSCI China A RMB Index ETF	•													
512320 CH	ICBC Credit Suisse MSCI China A RMB Index Fund	•											•	CNE100003XR5	
512380 CH	Yinhua MSCI China A RMB Index ETF Fund	•											•	CNE100003H25	
<b>MSCI China All Shares</b>															
CN US	Deutsche X-trackers MSCI All China Equity ETF	•											•	US2330517622	
KALL US	KraneShares MSCI All China Index ETF	•											•	US5007678015	
<b>MSCI China H Index</b>															
CC1U FP	Amundi ETF MSCI China UCITS ETF	•											•	FR0010871111	
<b>MSCI China Small Cap Index</b>															
ECNS US	iShares MSCI China Small Cap ETF	•											•	US46429B2007	
<b>MSCI Colombia Index</b>															
FMCO	EUREX MSCI Colombia (USD/NTR)			•									•		
<b>MSCI All Colombia Capped Index</b>															
ICOL US	iShares MSCI Colombia ETF	•											•	US46434G2021	
<b>MSCI All Colombia Select 25/50 Index</b>															
GXG US	Global X MSCI Colombia ETF	•											•	US37950E2000	
<b>MSCI Czech Republic Index</b>															
FMCZ	EUREX MSCI Czech Republic (USD/NTR)			•									•		
<b>MSCI Egypt Index</b>															
FMEY	EUREX MSCI Egypt (USD/NTR)			•									•		
<b>MSCI All Greece Select 25/50 Index</b>															
GREK US	Global X MSCI Greece ETF	•											•	US37950E3669	
<b>MSCI Greece IMI + Coca-Cola 20/35 Index</b>															
GRE FP	Lyxor MSCI Greece UCITS ETF	•											•	FR0010405431	
<b>MSCI Hungary Index</b>															
FMHU	EUREX MSCI Hungary (USD/NTR)			•									•		
<b>MSCI India Index</b>															
CI2 FP	Amundi ETF MSCI India UCITS ETF	•											•	FR0010713727	
CI2U FP	Amundi ETF MSCI India UCITS ETF	•											•	FR0010869784	
DMSI	DGCX MSCI India (INR/Pr)			•									•		
DMSU	DGCX MSCI India (USD/NTR)			•									•		
FMIN	EUREX MSCI India (USD/NTR)			•									•		
MIN	HKEX MSCI India (USD/NTR)			•									•		
MDA	HKEX MSCI India (INR/Pr)			•									•		
MII	ICE Futures Europe MSCI India (USD/NTR)			•									•		
MIN	ICE Futures US MSCI India (USD/NTR)			•									•		
INDA US	iShares MSCI India ETF	•											•	US46429B5984	
INDIA SP	iShares MSCI India ETF	•											•	SG1T41930465	
NDIA LN	iShares MSCI India UCITS ETF	•											•	IE00BZCQB185	
INR FP	Lyxor ETF MSCI India	•											•	FR0010361683	
LYINR SW	Lyxor ETF MSCI India USD	•											•	FR0010375766	
PINR FP	Lyxor UCITS ETF PEA MSCI India C-EUR	•											•	FR0011869320	
NMD	SGX MSCI India (USD/NTR)			•									•		
MD	SGX MSCI India (INR/Pr)			•									•		
<b>MSCI India Small Cap Index</b>															
SMIN US	iShares MSCI India Small Cap ETF	•											•	US46429B6149	
<b>MSCI Indonesia Index</b>															
XBNI IJ	BNI-AM ETF Nusantara MSCI Indonesia	•											•	IDN000339801	
XMID LN	X-trackers MSCI Indonesia Index UCITS ETF	•											•	LU0476289623	
3099 HK	Xtrackers MSCI Indonesia TRN Index UCITS ETF	•											•	LU0476289896	
F MID	EUREX MSCI Indonesia (USD/NTR)			•									•		
HIDR LN	HSBC MSCI INDONESIA UCITS ETF	•											•	IE00B46G8275	
MID	HKEX MSCI Indonesia (IDR/Pr)			•									•		
MDN	HKEX MSCI Indonesia (USD/NTR)			•									•		
256440 KS	KIM KINDEX MSCI Indonesia ETF Synth - Equity-Derivatives	•											•	KR7256440009	

Ticker/Symbol	Product Name	Product				Index Region					Primary Exchange				ISIN
		ETF	ETN	Futures	Options	Global	Americas	Europe/ Africa	Asia Pacific	Americas	Europe/ Africa	Asia Pacific			
INDO FP	Lyxor ETF MSCI Indonesia	•							•		•			FR0011067511	
XPMI IJ	Phillip MSCI Indonesia Equity Index	•							•			•		IDN000386000	
ID	SGX MSCI Indonesia (MYR/Pr)			•					•			•			
NID	SGX MSCI Indonesia (USD/NTR)			•					•			•			
<b>MSCI Indonesia Large Cap Index</b>															
XIML IJ	Premier ETF MSCI Indonesia Large Cap	•							•			•		IDN000430006	
<b>MSCI Indonesia IMI</b>															
EIDO US	iShares MSCI Indonesia ETF	•							•	•				US46429B3096	
<b>MSCI Korea Index</b>															
XMKO GR	Xtrackers MSCI Korea Index UCITS ETF	•							•		•			LU0292100046	
HKOR LN	HSBC MSCI Korea UCITS ETF	•							•		•			IE00B3Z0X395	
IKOR LN	iShares MSCI Korea ETF (Dist)	•							•		•			IE00B0M63391	
CSKR SW	iShares MSCI Korea UCITS ETF (Acc)	•							•		•			IE00B5W4TY14	
KRW FP	Lyxor ETF MSCI Korea	•							•		•			FR0010361691	
PKRW FP	Lyxor UCITS ETF PEA MSCI Korea C-EUR	•							•		•			FR0011869338	
310970 KS	Mirae Asset Tiger MSCI Korea Total Return ETF	•							•			•		KR7310970009	
332940 KS	NH-Amundi HANARO MSCI Korea TR ETF	•							•			•		KR7332940006	
156080 KS	Samsung Kodex MSCI Korea ETF	•							•			•		KR7156080004	
278540 KS	Samsung Kodex MSCI Korea Total Return ETF	•							•			•		KR7278540000	
<b>MSCI Korea 25/50 Index</b>															
KORU US	Direxion Daily South Korea Bull 3X Shares	•							•	•				US25459Y5208	
EWY US	iShares MSCI South Korea ETF	•							•	•				US4642867729	
IKO	iShares MSCI South Korea ETF AUD	•							•			•		AU000000IKO6	
<b>MSCI Malaysia Index</b>															
XCX3 LN	Xtrackers MSCI Malaysia TRN Index UCITS ETF - 1C	•							•		•			LU0514694370	
3082 HK	Xtrackers MSCI Malaysia TRN Index UCITS ETF DR- 1C	•							•			•		LU0514694537	
FMMY	EUREX MSCI Malaysia (USD/NTR)			•					•		•				
HMYR LN	HSBC MSCI Malaysia UCITS ETF	•							•		•			IE00B3X3R831	
MMN	HKEX MSCI Malaysia (USD/NTR)			•					•			•			
MMY	HKEX MSCI Malaysia (MYR/Pr)			•					•			•			
EWM US	iShares MSCI Malaysia ETF	•							•	•				US4642868305	
MAL FP	Lyxor ETF MSCI Malaysia	•							•		•			FR0010397554	
MY	SGX MSCI Malaysia (MYR/Pr)			•					•			•			
NMY	SGX MSCI Malaysia (USD/NTR)			•					•			•			
<b>MSCI Mexico Index</b>															
D5BI GR	Xtrackers MSCI Mexico Index UCITS ETF	•							•		•			LU0476289466	
FMMX	EUREX MSCI Mexico (USD/NTR)			•					•		•				
HMEX LN	HSBC MSCI Mexico Capped UCITS ETF	•							•		•			IE00B3QMYK80	
MCH	ICE Futures Europe MSCI Mexico (USD/NTR)			•					•			•			
MXM	ICE Futures US MSCI Mexico (USD/NTR)			•					•		•				
<b>MSCI Mexico Capped Index</b>															
CSMXCP SW	iShares MSCI Mexico Capped UCITS ETF	•							•		•			IE00B5WHFQ43	
<b>MSCI Mexico IMI 25/50 Index</b>															
EWY US	iShares MSCI Mexico ETF	•							•		•			US4642868222	
291130 KS	Kim Kindex MSCI Mexico ETF - Synth	•							•			•		KR7291130003	
<b>MSCI Pakistan Index</b>															
FMPK	EUREX MSCI Pakistan (USD/NTR)			•					•		•				
<b>MSCI Pakistan IMI Index</b>															
O9D SP	Xtrackers MSCI Pakistan IM TRN Index UCITS ETF	•							•			•		LU0659579147	
<b>MSCI All Pakistan Select 25/50 Index</b>															
PAK US	Global X MSCI Pakistan ETF	•							•	•				US37950E6894	
<b>MSCI Peru Index</b>															
FMPE	EUREX MSCI Peru (USD/NTR)			•					•		•				
<b>MSCI All Peru Capped Index</b>															
EPU US	iShares MSCI All Peru ETF	•							•		•			US4642898427	
<b>MSCI Philippines Index</b>															
FMPH	EUREX MSCI Philippines (USD/NTR)			•					•		•				



Ticker/Symbol	Product Name	Product				Index Region					Primary Exchange				ISIN
		ETF	ETN	Futures	Options	Global	Americas	Europe/ Africa	Asia Pacific	Americas	Europe/ Africa	Asia Pacific			
MPN	HKEX MSCI Philippines (USD/NTR)			•					•			•			
MPH	HKEX MSCI Philippines (PHP/Pr)			•					•			•			
PH	SGX MSCI Philippines (PHP/Pr)			•					•			•			
NPH	SGX MSCI Philippines (USD/NTR)			•					•			•			
<b>MSCI Philippines IMI</b>															
XPHI LN	Xtrackers MSCI Philippines IM TRN Index UCITS ETF	•							•			•		LU0592215403	
3016 HK	Xtrackers MSCI Philippines IM Index UCITS ETF DR	•							•			•		LU0592215668	
EPHE US	iShares MSCI Philippines ETF	•							•	•				US46429B4086	
261920 KS	KIM KINDEX MSCI Philippines ETF - Synth	•							•			•		KR7261920003	
<b>MSCI Poland Index</b>															
SPOL LN	iShares MSCI Poland ETF UCITS ETF	•							•			•		IE00B4M7GH52	
FMPL	EUREX MSCI Poland (USD/NTR)			•					•			•			
<b>MSCI Poland IMI 25/50</b>															
EPOL US	iShares MSCI Poland ETF	•							•	•				US46429B6065	
<b>MSCI Qatar Index</b>															
FMQA	EUREX MSCI Qatar (USD/NTR)			•					•			•			
<b>MSCI All Qatar Capped Index</b>															
QAT US	iShares MSCI Qatar ETF	•							•	•				US46434V7799	
<b>MSCI Russia Index</b>															
XMRC GR	Xtrackers MSCI Russia Capped Index UCITS ETF	•							•			•		LU0322252502	
FMRS	EUREX MSCI Russia (USD/NTR)			•					•			•			
FMRU	EUREX MSCI Russia (USD/Pr)			•					•			•			
OMRU	EUREX MSCI Russia (USD/Pr)				•				•			•			
HRUD LN	HSBC MSCI Russia Capped UCITS ETF	•							•			•		IE00B5LJZQ16	
CSRU SW	iShares MSCI Russia ADR/GDR UCITS ETF	•							•			•		IE00B5V87390	
<b>MSCI Russia 25/50 Index</b>															
XMRC SP	Xtrackers MSCI Russia Capped Index UCITS ETF	•							•			•		LU0455009265	
ERUS US	iShares MSCI Russia ETF	•							•	•				US46434G8069	
265690 KS	KIM KINDEX MSCI Russia ETF Synth	•							•			•		KR7265690008	
<b>MSCI Russia IMI Select GDR Index</b>															
RUSL LN	Lyxor MSCI Russia UCITS ETF	•							•			•		FR0011495944	
RUS FP	Lyxor MSCI Russia UCITS ETF	•							•			•		FR0010326140	
PRUS FP	Lyxor PEA MSCI Russia IMI Select GDR UCITS ETF	•							•			•		FR0011869387	
<b>MSCI Saudi Arabia IMI 25/50 Index</b>															
KSA US	iShares MSCI Saudi Arabia ETF	•							•	•				US46434V4234	
<b>MSCI Saudi Arabia 20/35 Index</b>															
MSAU LN	Invesco MSCI Saudi Arabia UCITS ETF	•							•			•		IE00BFWMQ331	
IKSA LN	iShares MSCI Saudi Arabia Capped UCITS ETF	•							•			•		IE00BYR0489	
LP68545880	iShares MSCI Saudi Arabia Capped UCITS ETF USD (Dist)	•							•			•		IE00BJ5JPJ87	
<b>MSCI Saudi Arabia Index</b>															
FMSA	EUREX MSCI Saudi Arabia (USD/NTR)	•							•			•			
<b>MSCI South Africa Index</b>															
FMZA	EUREX MSCI South Africa (USD/NTR)			•					•			•			
HZAR LN	HSBC MSCI South Africa UCITS ETF	•							•			•		IE00B57S5Q22	
MSE	ICE Futures Europe MSCI South Africa (EUR/NTR)			•					•			•			
MSA	ICE Futures Europe MSCI South Africa (USD/NTR)			•					•			•			
MMS	ICE Futures US MSCI South Africa (USD/NTR)			•					•	•		•			
SRSA LN	iShares MSCI South Africa UCITS ETF	•							•			•		IE00B52XQP83	
MXZA	JSE MSCI South Africa (ZAR/Pr)			•					•			•			
AFS FP	Lyxor MSCI South Africa UCITS ETF	•							•			•		FR0010464446	
PAFS FP	Lyxor PEA MSCI South Africa UCITS ETF	•							•			•		FR0011871144	
<b>MSCI South Africa 25/50 Index</b>															
EZA US	iShares MSCI South Africa ETF	•							•	•				US4642867802	
<b>MSCI Taiwan Index</b>															
XMTW GR	Xtrackers MSCI Taiwan Index UCITS ETF	•							•			•		LU0292109187	
FMTW	EUREX MSCI Taiwan (USD/NTR)			•					•			•			
0057 TT	Fubon MSCI Taiwan ETF	•							•			•		TW0000057009	
HTWN LN	HSBC MSCI Taiwan ETF UCITS ETF	•							•			•		IE00B3S1J086	

Ticker/Symbol	Product Name	Product				Index Region					Primary Exchange				ISIN
		ETF	ETN	Futures	Options	Global	Americas	Europe/ Africa	Asia Pacific	Americas	Europe/ Africa	Asia Pacific			
MTW	HKEX MSCI Taiwan (TWD/Pr)			•					•			•			
MWN	HKEX MSCI Taiwan (USD/NTR)			•					•			•			
EWT US	iShares MSCI Taiwan ETF	•							•	•				US4642867315	
ITWN LN	iShares MSCI Taiwan UCITS ETF	•							•		•			IE00B0M63623	
83074 HK	iShares Core MSCI Taiwan Index ETF	•							•			•		HK0000297785	
MST	ICE Futures Europe MSCI Taiwan (USD/NTR)			•					•		•				
MTW	ICE Futures US MSCI Taiwan (USD/NTR)			•					•	•					
TWN FP	Lyxor ETF Taiwan	•							•		•			FR0010444786	
TW	SGX MSCI Taiwan (TWD/Pr)			•					•			•			
TW	SGX MSCI Taiwan (TWD/Pr)				•				•			•			
NTW	SGX MSCI Taiwan (USD/NTR)			•					•			•			
6203 TT	Yuanta/ P-shares MSCI Taiwan ETF	•							•			•		TW0006203003	
<b>MSCI Taiwan 25/50 Index</b>															
TWP	HKEX MSCI Taiwan 25/50 (TWD/Pr)			•					•			•			
TWN	HKEX MSCI Taiwan 25/50 (USD/NTR)			•					•			•			
ITW	iShares MSCI Taiwan ETF AUD	•												AU000000ITW0	
<b>MSCI Thailand Index</b>															
XCX4 LN	X-trackers MSCI Thailand TRN Index UCITS ETF - 1C	•							•		•			LU0514694701	
3092 HK	X-trackers MSCI Thailand TRN Index UCITS ETF DR	•							•			•		LU0514694966	
FMTH	EUREX MSCI Thailand (USD/NTR)			•					•		•				
MTN	HKEX MSCI Thailand (USD/NTR)			•					•			•			
MTH	HKEX MSCI Thailand (THB/Pr)			•					•			•			
TH	SGX MSCI Thailand (THB/Pr)			•					•			•			
NTH	SGX MSCI Thailand (USD/NTR)			•					•			•			
THA FP	Lyxor MSCI Thailand UCITS ETF	•							•		•			FR0011067529	
<b>MSCI Thailand ex Foreign Board Index</b>															
BMSCITH TB	BCAP MSCI Thailand ETF	•							•			•		TH6861010002	
<b>MSCI Thailand IMI 25/50</b>															
THD US	iShares MSCI Thailand ETF	•							•	•				US4642866242	
<b>MSCI Turkey Index</b>															
HTRD LN	HSBC MSCI Turkey ETF UCITS ETF	•							•		•			IE00B5BRQB73	
ITKY LN	iShares MSCI Turkey ETF UCITS ETF	•							•		•			IE00B1FZS574	
TUR FP	Lyxor MSCI Turkey UCITS ETF	•							•		•			FR0010326256	
ETUR FP	Lyxor PEA MSCI Turkey UCITS ETF	•							•		•			FR0011869395	
<b>MSCI Turkey IMI</b>															
TUR US	iShares MSCI Turkey ETF	•							•	•				US4642867158	
<b>MSCI Tadawul 30 Index</b>															
9402.SE	HSBC MSCI Saudi 20 ETF	•							•		•			SA12T0A4IT43	
SF30	Tadawul MT30 (SAR/Pr)			•					•		•				
<b>MSCI UAE Index</b>															
FMUA	EUREX MSCI UAE (USD/NTR)			•					•		•				
MSCIUAE	NASDAQ MSCI UAE (USD/NTR)			•					•		•				
<b>MSCI All UAE Capped Index</b>															
UAE US	iShares MSCI UAE ETF	•							•	•				US46434V7617	
<b>Sector Indexes</b>															
<b>MSCI Emerging Markets Communication Services Index</b>															
FMWC	EUREX MSCI Emerging Markets Communication Services (USD/NTR)			•		•					•				
<b>MSCI Emerging Markets Consumer Discretionary Index</b>															
FMWD	EUREX MSCI Emerging Markets Consumer Discretionary (USD/NTR)			•		•					•				
<b>MSCI Emerging Markets Financials Index</b>															
FMWF	EUREX MSCI Emerging Markets Financials (USD/NTR)			•		•					•				

Ticker/Symbol	Product Name	Product				Index Region					Primary Exchange				ISIN
		ETF	ETN	Futures	Options	Global	Americas	Europe/ Africa	Asia Pacific	Americas	Europe/ Africa	Asia Pacific			
<b>MSCI Emerging Markets Health Care Index</b>															
FMWH	EUREX MSCI Emerging Markets Health Care (USD/NTR)			•	•										
<b>MSCI Emerging Markets Industrials Index</b>															
FMWI	EUREX MSCI Emerging Markets Industrials (USD/NTR)			•	•										
<b>MSCI Emerging Markets Information Technology Index</b>															
FMWL	EUREX MSCI Emerging Markets Information Technology (USD/NTR)			•	•										
<b>MSCI Emerging Markets Utilities Index</b>															
FMWQ	EUREX MSCI Emerging Markets Utilities (USD/NTR)			•	•										
<b>MSCI Emerging Markets Energy Index</b>															
FMWR	EUREX MSCI Emerging Markets Energy (USD/NTR)			•	•										
<b>MSCI Emerging Markets Consumer Staples Index</b>															
FMWS	EUREX MSCI Emerging Markets Consumer Staples (USD/NTR)			•	•										
<b>MSCI Emerging Markets Materials Index</b>															
FMWT	EUREX MSCI Emerging Markets Materials (USD/NTR)			•	•										
<b>MSCI Emerging Markets Real Estate Index</b>															
FMWW	EUREX MSCI Emerging Markets Real Estate (USD/NTR)			•	•										
<b>MSCI China All Shares Health Care 10/40</b>															
KURE US	Kraneshares Trust-Kraneshares MSCI All China Health Care Index ETF	•							•	•				US5007678353	
<b>MSCI China Consumer Staples 10/50 Index</b>															
CHIS US	Global X MSCI China Consumer Staples ETF	•							•	•				US37954Y5583	
<b>MSCI China Health Care 10/50 Index</b>															
CHIH US	Global X MSCI China Health Care ETF	•							•	•				US37954Y5419	
<b>MSCI China Information Technology 10/50 Index</b>															
CHIK US	Global X MSCI China Information Technology ETF	•							•	•				US37954Y5336	
<b>MSCI China Real Estate 10/50 Index</b>															
CHIR US	Global X MSCI China Real Estate ETF	•							•	•				US37954Y5252	
<b>MSCI China Utilities 10/50 Index</b>															
CHIU US	Global X MSCI China Utilities ETF	•							•	•				US37954Y5179	
<b>MSCI China Consumer Discretionary 10/50 Index</b>															
CHIQ US	Global X MSCI China Consumer Discretionary ETF	•							•	•				US37950E4089	
<b>MSCI China Materials 10/50 Index</b>															
CHIM US	Global X MSCI China Materials ETF	•							•	•				US37950E2422	
<b>MSCI China Industrials 10/50 Index</b>															
CHII US	Global X MSCI China Industrials ETF	•							•	•				US37950E7058	
<b>MSCI China Financials 10/50 Index</b>															
CHIX US	Global X MSCI China Financials ETF	•							•	•				US37950E6068	
<b>MSCI China Communication Services 10/50 Index</b>															
CHIC US	Global X MSCI China Communication Services ETF	•							•	•				US37950E8049	
<b>MSCI China Energy IMI Plus 10/50 Index</b>															
CHIE US	Global X MSCI China Energy ETF	•							•	•				US37950E5078	
<b>MSCI Taiwan Financials Index</b>															
0055 TT	Yuanta/P-shares MSCI Taiwan Financials ETF	•							•		•			TW0000055003	

Ticker/Symbol	Product Name	Product				Index Region					Primary Exchange				ISIN
		ETF	ETN	Futures	Options	Global	Americas	Europe/ Africa	Asia Pacific	Americas	Europe/ Africa	Asia Pacific			
<b>Frontier Markets Indexes</b>															
<b>Global Indexes</b>															
<b>MSCI Frontier Markets Index</b>															
FMFM	EUREX MSCI Frontier Markets (USD/NTR)			•	•										
<b>MSCI Frontier Markets 100 Index</b>															
FM US	iShares MSCI Frontier 100 Index ETF	•			•									US4642861458	
<b>Regional Indexes</b>															
<b>MSCI GCC Countries Index</b>															
FMSG	EUREX MSCI GCC Countries (USD/NTR)			•	•										
<b>MSCI GCC Countries ex Select Securities Index</b>															
XGLF GR	Xtrackers MSCI GCC Select Index UCITS ETF	•						•		•				IE00BQXKVQ19	
<b>Country Indexes</b>															
<b>MSCI All Nigeria Select 25/50 Index</b>															
NGE US	Global X MSCI Nigeria ETF	•						•		•				US37950E4246	
<b>MSCI Kuwait Index</b>															
FMKW	EUREX MSCI Kuwait (USD/NTR)			•				•		•					
<b>MSCI Kuwait 20/35 Index</b>															
MKUW LN	Invesco MSCI Kuwait UCITS ETF	•						•		•				IE00BK63RN45	
<b>MSCI All Kuwait Select Size Liquidity Capped Index</b>															
KWT US	iShares MSCI Kuwait ETF	•						•		•				US46436E8176	
<b>MSCI Morocco Index</b>															
FMMA	EUREX MSCI Morocco (USD/NTR)			•				•		•					
<b>MSCI Vietnam Index</b>															
2804 HK	Premia MSCI Vietnam ETF USD	•						•		•				HK0000515863	
MVN	HKEX MSCI Vietnam (USD/NTR)			•				•		•					
MVT	HKEX MSCI Vietnam (VND/Pr)			•				•		•					
NVN	SGX MSCI Vietnam Index (USD/NTR)			•				•		•					
VN	SGX MSCI Vietnam Index (VND/Pr)			•				•		•					
<b>Factor Indexes</b>															
<b>MSCI ACWI Diversified Multiple-Factor</b>															
ACWF US	iShares Edge MSCI Multifactor Global ETF	•				•				•				US46434V3160	
<b>MSCI ACWI Minimum Volatility (USD) Index</b>															
XMW CN	iShares Edge MSCI Min Vol Global Index ETF	•				•				•				CA46434A1066	
ACVV US	iShares MSCI Min Vol Global Index ETF	•				•				•				US4642865251	
<b>MSCI ACWI Quality Index</b>															
ZGQ CN	BMO MSCI All Country World High Quality Index ETF	•				•				•				CA05580K1021	
<b>MSCI World Diversified Multiple-Factor Index</b>															
IFSW LN	iShares Edge MSCI World Multifactor UCITS ETF	•				•				•				IE00BZ0PKT83	
IS07 GY	iShares Edge MSCI World Multifactor UCITS ETF	•				•				•				IE00BYXPXK00	
DMFC SW	iShares Edge MSCI World Multifactor UCITS ETF CHF Hedged (Acc)	•				•				•				IE00BF450720	
<b>MSCI World Diversified Multiple-Factor (AUD) Index</b>															
WDMF AU	iShares Edge MSCI World Multifactor ETF	•				•				•				AU00000WDMF0	
<b>MSCI World Dividend Points Index (Annual reset)</b>															
FVPD	EUREX MSCI World Dividend Points Index (Annual reset) (USD/GTR)			•		•				•					
<b>MSCI World Equal Weighted Index</b>															
EWV	ICE Futures Europe MSCI World Equal Weighted (USD/NTR)			•		•				•					
<b>MSCI World High Dividend Yield Index</b>															
FIHD US	UBS FI Enhanced Global High Yield ETN		•			•				•				US90274D2181	
FIYY US	Barclays ETN+ FI Enhanced Global High Yield Exchange Traded Notes Series B		•			•				•				US06746Q2497	
XDG CN	iShares Core MSCI Global Quality Dividend Index ETF	•				•				•				CA46436K1021	
WQDV LN	iShares MSCI World Quality Dividend UCITS ETF	•				•				•				IE00BYHYSQ67	

Ticker/Symbol	Product Name	Product				Index Region					Primary Exchange				ISIN
		ETF	ETN	Futures	Options	Global	Americas	Europe/ Africa	Asia Pacific	Americas	Europe/ Africa	Asia Pacific			
XDG.U CN	iShares Core MSCI Global Quality Dividend Index ETF USD	•				•								CA46436K1104	
XDWY GR	Xtrackers MSCI World High Dividend Yield UCITS ETF	•				•							•	IE00BCHWNQ94	
<b>MSCI World Enhanced Value Index</b>															
XDEV GR	Xtrackers MSCI World Value Factor UCITS ETF DR	•				•							•	IE00BL25JM42	
IWVL LN	iShares MSCI World Value Factor UCITS ETF	•				•							•	IE00BP3QZB59	
IWVU LN	iShares Edge MSCI World Value Factor UCITS ETF	•				•							•	IE00BFYTY533	
<b>MSCI World Value Exposure Select Index</b>															
WVAL NA	SPDR MSCI World Value UCITS ETF Acc	•				•							•	IE00BJXRT813	
<b>MSCI World Mid-Cap Equal Weighted Index</b>															
IWSZ LN	iShares MSCI World Size Factor UCITS ETF	•				•							•	IE00BP3QZD73	
<b>MSCI World Minimum Volatility (AUD) Index</b>															
WVOL AU	iShares Edge MSCI World Minimum Volatility ETF	•				•							•	AU00000WVOL6	
<b>MSCI World Minimum Volatility (USD) Index</b>															
XDEB GR	Xtrackers MSCI World Minimum Volatility UCITS ETF DR	•				•							•	IE00BL25JN58	
MVOL LN	iShares Edge MSCI World Min Vol UCITS ETF	•				•							•	IE00B8FHGS14	
SXR0 GY	iShares Edge MSCI World Minimum Volatility UCITS ETF	•				•							•	IE00BYXPXL17	
MVW	ICE Futures Europe MSCI World Minimum Volatility (USD/NTR)			•		•							•		
WMVG LN	iShares Edge MSCI World Min Volatility UCITS ETF GBP Acc	•				•							•	IE00BGGPP8L80	
MVSH SW	iShares Edge MSCI World Minimum Volatility UCITS ETF CHF Hedged (Acc)	•				•							•	IE00BD1JRZ09	
<b>MSCI World Minimum Volatility ESG Reduced Carbon Target Index</b>															
MVEW NA	iShares Edge MSCI World Minimum Volatility ESG UCITS ETF - USD (Acc)	•				•							•	IE00BKVL7778	
<b>MSCI World Momentum Index</b>															
XDEM GR	Xtrackers MSCI World Momentum Factor UCITS ETF DR	•				•							•	IE00BL25JP72	
IWMO LN	iShares MSCI World Momentum Factor UCITS ETF	•				•							•	IE00BP3QZ825	
<b>MSCI World Risk Weighted Top 200 Index</b>															
RWW.B CN	First Asset MSCI World Low Risk Weighted ETF	•				•							•	CA31864D3094	
<b>MSCI World Factor Mix A-Series Index</b>															
QMIX AU	SPDR MSCI World Quality Mix Fund	•				•							•	AU00000QMIX4	
QWLD US	SPDR MSCI World Strategic Factors ETF	•				•							•	US78463X4189	
<b>MSCI World Sector Neutral Quality Index</b>															
XDEQ GR	Xtrackers MSCI World Quality Factor UCITS ETF DR	•				•							•	IE00BL25JL35	
IWQU LN	iShares MSCI World Quality Factor UCITS ETF	•				•							•	IE00BP3QZ601	
<b>MSCI World ex Australia Quality Index</b>															
QUAL AU	Market Vectors MSCI World ex Australia Quality ETF	•				•							•	AU00000QUAL9	
<b>MSCI World ex USA Diversified Multiple-Factor Index</b>															
INTF US	iShares Edge MSCI Multifactor Intl ETF	•				•							•	US46434V2741	
<b>MSCI World ex USA Enhanced Value Index</b>															
IVLU US	iShares Edge MSCI Intl Value Factor ETF	•				•							•	US46435G4091	
<b>MSCI World ex USA Momentum Index</b>															
IMTM US	iShares Edge MSCI Intl Momentum Factor ETF	•				•							•	US46434V4499	
<b>MSCI World ex USA Low Size Index</b>															
ISZE US	iShares Edge MSCI Intl Size Factor ETF	•				•							•	US46435G5080	
<b>MSCI World ex USA Sector Neutral Quality Index</b>															
IQLT US	iShares Edge MSCI Intl Quality Factor ETF	•				•							•	US46434V4564	
<b>MSCI World ex USA Small Cap Diversified Multiple-Factor Index</b>															
ISCF US	iShares Edge MSCI Multifactor Intl Small-Cap ETF	•				•							•	US46434V2667	
<b>MSCI World ex USA Select Value Momentum Blend Index</b>															
UIVM US	USAA MSCI International Value Momentum Blend Index ETF	•				•							•	US90291F3038	
<b>MSCI EAFE Diversified Multiple-Factor (CAD) Index</b>															
XFI CN	iShares MSCI Multifactor EAFE Index ETF	•				•							•	CA46435L1013	
<b>MSCI EAFE Dividend Masters Index</b>															
EFAD US	ProShares MSCI EAFE Dividend Growers ETF	•				•							•	US74347B8393	
<b>MSCI EAFE Dividend Points Index (Annual reset)</b>															
FFPD	EUREX MSCI EAFE Dividend Points Index (Annual reset) (USD/GTR)			•		•							•		

Ticker/Symbol	Product Name	Product				Index Region					Primary Exchange				ISIN
		ETF	ETN	Futures	Options	Global	Americas	Europe/ Africa	Asia Pacific	Americas	Europe/ Africa	Asia Pacific			
<b>MSCI EAFE Enhanced Value Region Neutral Capped Index</b>															
ZVI CN	BMO MSCI EAFE Value Index ETF	•				•				•				CA09661A1084	
<b>MSCI EAFE Top 50 Dividend Index</b>															
EFAS US	Global X MSCI SuperDividend EAFE ETF	•				•				•				US37954Y6995	
<b>MSCI EAFE Risk Weighted Top 175 Index</b>															
RWX.B CN	First Asset MSCI International Low Risk Weighted ETF(Unhedged)	•				•				•				CA31866Q2099	
<b>MSCI EAFE Minimum Volatility (USD) Index</b>															
EFAV US	iShares Edge MSCI Min Vol EAFE ETF	•				•				•				US46429B6891	
XMI CN	iShares MSCI Min Vol EAFE Index ETF	•				•				•				CA46433U1030	
<b>MSCI EAFE Factor Mix A-Series Index</b>															
QEFA US	SPDR MSCI EAFE Strategic Factors ETF	•				•				•				US78463X4346	
<b>MSCI Europe Diversified Multiple-Factor Index</b>															
IFSE LN	iShares Edge MSCI Europe Multifactor UCITS ETF	•						•		•				IE00BZ0PKV06	
IFSD LN	iShares Edge MSCI Europe Multifactor UCITS ETF	•						•		•				IE00BG13YL86	
<b>MSCI Europe Dividend Masters Index</b>															
EUDV US	ProShares MSCI Europe Dividend Growers ETF	•						•		•				US74347B5407	
<b>MSCI Europe High Dividend Yield 4% Issuer Capped Index</b>															
EQDV LN	iShares MSCI Europe Quality Dividend UCITS ETF	•						•		•				IE00BYHSM20	
<b>MSCI Europe Enhanced Value Index</b>															
IEVL LN	iShares Edge MSCI Europe Value Factor UCITS ETF	•						•		•				IE00BQN1K901	
IEDL LN	iShares Edge MSCI Europe Value Factor UCITS ETF	•						•		•				IE00BG13YH41	
<b>MSCI Europe Equal Weighted Index</b>															
EWE	ICE Futures Europe MSCI Europe Equal Weighted (EUR/NTR)			•		•				•					
<b>MSCI Europe Equal Weighted Buyback Yield Index</b>															
BBEU FP	Amundi ETF MSCI Europe Buyback UCITS ETF	•						•		•				FR0012805687	
<b>MSCI Europe High Dividend Yield Index</b>															
CD9 FP	Amundi ETF MSCI Europe High Dividend UCITS ETF	•						•		•				FR0010718874	
<b>MSCI Europe Mid Cap Equal Weighted Index</b>															
IESZ LN	iShares Edge MSCI Europe Size Factor UCITS ETF	•						•		•				IE00BQN1KC32	
<b>MSCI Europe Minimum Volatility (USD) Index</b>															
MIVO FP	Amundi ETF MSCI Europe Minimum Volatility UCITS ETF	•						•		•				FR0010713768	
MVEU LN	iShares Edge MSCI Europe Min Vol UCITS ETF	•						•		•				IE00B86MWN23	
MVED LN	iShares Edge MSCI Europe Minimum Volatility UCITS ETF	•						•		•				IE00BG13YK79	
MVE	ICE Futures Europe MSCI Europe Minimum Volatility (EUR/NTR)			•				•		•					
<b>MSCI Europe Minimum Volatility ESG Reduced Carbon Target Index</b>															
MVEE GY	iShares Edge MSCI Europe Minimum Volatility ESG UCITS ETF - EUR (Acc)	•						•		•				IE00BKVL7D31	
<b>MSCI Europe Momentum Index</b>															
MCEU FP	Amundi ETF MSCI Europe Momentum Factor UCITS ETF	•						•		•				FR0013140514	
IEMO LN	iShares MSCI Europe Momentum Factor UCITS ETF	•						•		•				IE00BQN1K786	
IEMD LN	iShares Edge MSCI Europe Momentum Factor UCITS ETF	•						•		•				IE00BG13YJ64	
<b>MSCI Europe Quality Index</b>															
QCEU FP	Amundi ETF MSCI Europe Quality Factor UCITS ETF	•						•		•				FR0013140522	
<b>MSCI Europe Risk Weighted Top 100 Index</b>															
RWE.B CN	First Asset MSCI Europe Low Risk Weighted ETF	•						•		•				CA31864R3080	
<b>MSCI Europe Sector Neutral Quality Index</b>															
IEQU LN	iShares Edge MSCI Europe Quality Factor UCITS ETF	•						•		•				IE00BQN1K562	
IEQD LN	iShares Edge MSCI Europe Quality Factor UCITS ETF	•						•		•				IE00BG13YG34	
<b>MSCI Europe Small Cap Value Weighted Index</b>															
ZPRX GR	SPDR MSCI Europe Small Cap Value Weighted UCITS ETF	•						•		•				IE00BSPLC298	
ZPRV GR	SPDR MSCI USA Small Cap Value Weighted UCITS ETF	•						•		•				IE00BSPLC413	
<b>MSCI Europe Value Weighted Index</b>															
ZPRW GR	SPDR MSCI Europe Value Weighted UCITS ETF	•						•		•				IE00BSPLC306	
<b>MSCI EMU Diversified Multiple-Factor Index</b>															
EDMF GR	iShares Edge MSCI EMU Multifactor UCITS ETF	•						•		•				IE00BF2PG656	

Ticker/Symbol	Product Name	Product				Index Region					Primary Exchange				ISIN
		ETF	ETN	Futures	Options	Global	Americas	Europe/ Africa	Asia Pacific	Americas	Europe/ Africa	Asia Pacific			
<b>MSCI EMU High Dividend Yield Index</b>															
CD8 FP	Amundi ETF MSCI EMU High Dividend UCITS ETF	•						•				•			FR0010717090
<b>MSCI EMU Minimum Volatility Index</b>															
XMVE GR	Xtrackers MSCI EMU Minimum Volatility UCITS ETF DR	•						•				•			IE00BDGN9Z19
<b>MSCI EMU Prime Value Index</b>															
UIMZ GR	UBS ETF-Factor MSCI EMU Prime Value UCITS ETF	•						•				•			LU1215452928
<b>MSCI EMU Quality Index</b>															
UIM2 GR	UBS ETF-Factor MSCI EMU Quality UCITS ETF	•						•				•			LU1215451524
<b>MSCI EMU Select Dynamic 50% Risk Weighted Index</b>															
UIMY GR	UBS ETF-Factor MSCI EMU Low Volatility UCITS ETF	•						•				•			LU1215454460
<b>MSCI EMU Select Factor Mix Index</b>															
EUFM IM	UBS ETF - MSCI EMU Select Factor Mix UCITS ETF	•						•				•			LU1804202403
<b>MSCI Emerging Markets Dividend Masters Index</b>															
EMDV US	ProShares MSCI Emerging Markets Dividend Growers ETF	•				•						•			US74347B8476
<b>MSCI Emerging Markets Dividend Points Index (Annual reset)</b>															
FEFD	EUREX MSCI EM Dividend Points Index (Annual reset) (USD/GTR)			•		•						•			
<b>MSCI Emerging Market Diversified Multiple-Factor Index</b>															
EMGF US	iShares Edge MSCI Multifactor Emerging Markets ETF	•				•						•			US46434G8895
EMKT AU	VanEck Vectors MSCI Multifactor Emerging Markets ETF	•				•						•			AU0000004368
<b>MSCI Emerging Markets Equal Weighted Index</b>															
EWM	ICE Futures Europe MSCI Emerging Markets Equal Weighted (USD/NTR)			•		•						•			
<b>MSCI Emerging Markets Minimum Volatility (USD) Index</b>															
EEMV US	iShares Edge MSCI Min Vol Emerging Markets ETF	•				•						•			US4642865335
XMM CN	iShares MSCI Min Vol Emerging Markets Index ETF	•				•						•			CA46433Y1051
EMMV LN	iShares Edge MSCI Emerging Markets Min Vol UCITS ETF	•				•						•			IE00B8KGV557
MVM	ICE Futures Europe MSCI Emerging Markets Minimum Volatility (USD/NTR)			•		•						•			
<b>MSCI Emerging Markets Factor Mix A-Series Index</b>															
QEMM US	SPDR MSCI Emerging Markets Strategic Factors ETF	•				•						•			US78463X4262
<b>MSCI Emerging Markets Top 50 Dividend Index</b>															
SDEM US	Global X MSCI SuperDividend Emerging Markets ETF	•				•						•			US37950E1192
<b>MSCI Emerging Markets Select Value Momentum Blend Index</b>															
UEVM US	USAA MSCI Emerging Markets Value Momentum Blend Index ETF	•				•						•			US90291F4028
<b>MSCI Emerging Markets Select Value Factor Focus Index</b>															
5MVL GR	iShares Edge MSCI EM Value Factor UCITS ETF	•				•						•			IE00BG0SKF03
<b>MSCI AC Asia ex Japan IMI REITs Custom High Dividend Tilt Capped Index</b>															
0837EA MK	TradePlus MSCI Asia ex Japan REITs Tracker ETF	•							•			•			MYL0837EA004
<b>MSCI North America High Dividend Yield Index</b>															
XDND GR	Xtrackers MSCI North America High Dividend Yield Index UCITS ETF DR	•						•				•			IE00BH361H73
<b>Factors Hedged Indexes</b>															
<b>MSCI ACWI Minimum Volatility (USD) 100% Hedged to CAD Index</b>															
XMY CN	iShares MSCI Min Vol Global Index ETF (CAD-Hedged)	•				•						•			CA46436T1030
<b>MSCI ACWI ex US High Dividend Yield US Dollar Hedged Index</b>															
HDAW US	Deutsche X-trackers MSCI All World ex US High Dividend Yield Hedged Equity ETF	•				•						•			US2330515980
<b>MSCI World High Dividend Yield 100% Hedged to CAD Index</b>															
XDGH CN	iShares Core MSCI Global Quality Dividend Index ETF (CAD-Hedged)	•				•						•			CA46437B1013
<b>MSCI World Risk Weighted Top 200 Hedged to CAD Index</b>															
RWW CN	First Asset MSCI World Low Risk Weighted ETF (CAD Hedged)	•				•						•			CA31864D1015

Ticker/Symbol	Product Name	Product				Index Region					Primary Exchange				ISIN
		ETF	ETN	Futures	Options	Global	Americas	Europe/ Africa	Asia Pacific	Americas	Europe/ Africa	Asia Pacific			
<b>MSCI World ex Australia Quality 100% Hedged to AUD Index</b>															
QHAL AU	Vaneck Vectors MSCI World ex Australia Quality Hedged ETF	•				•							•	AU0000041204	
<b>MSCI EAFE High Dividend Yield US Dollar Hedged Index</b>															
HDEF US	Deutsche X-trackers MSCI EAFE High Dividend Yield Hedged Equity ETF	•				•							•	US2330516301	
<b>MSCI EAFE Diversified Multiple-Factor (CAD) 100% Hedged to CAD Index</b>															
XFF CN	iShares MSCI Multifactor EAFE Index ETF (CAD-Hedged)	•				•							•	CA46435P1027	
<b>MSCI EAFE Minimum Volatility (USD) 100% Hedged to CAD Index</b>															
XML CN	iShares MSCI Min Vol EAFE Index ETF (CAD-Hedged)	•				•							•	CA46436B1022	
<b>MSCI EAFE Risk Weighted Top 175 Hedged to CAD Index</b>															
RWX CN	First Asset MSCI International Low Risk Weighted ETF	•				•							•	CA31866Q1000	
<b>MSCI Europe Quality 100% Hedged to CAD Index</b>															
ZEQ CN	BMO MSCI Europe High Quality Hedged To CAD Index ETF	•											•	CA05579B1058	
<b>MSCI Europe Quality 100% Hedged to USD Index</b>															
3165 HK	BMO MSCI Europe Quality Hedged to USD ETF	•											•	HK0000281003	
<b>MSCI Europe Risk Weighted Top 100 Hedged to CAD</b>															
RWE CN	First Asset MSCI Europe Low Risk Weighted ETF (CAD-Hedged)	•											•	CA31864R1001	
<b>MSCI EMU Prime Value 100% Hedged to CHF Index</b>															
EPVLS SW	UBS ETF - Factor MSCI EMU Prime Value UCITS ETF hedged to CHF	•											•	LU1215453496	
<b>MSCI EMU Prime Value 100% Hedged to USD Index</b>															
EPVLU SW	UBS ETF - Factor MSCI EMU Prime Value UCITS ETF hedged to USD	•											•	LU1215453736	
<b>MSCI EMU Quality 100% Hedged to CHF Index</b>															
EQLTS SW	UBS ETF - Factor MSCI EMU Quality UCITS ETF hedged to CHF	•											•	LU1215452092	
<b>MSCI EMU Quality 100% Hedged to USD Index</b>															
EQLTU SW	UBS ETF - Factor MSCI EMU Quality UCITS ETF hedged to USD	•											•	LU1215452258	
<b>MSCI EMU Select Dynamic 50% Risk Weighted 100% Hedged to CHF Index</b>															
ELOVS SW	UBS ETF - Factor MSCI EMU Low Volatility hedged to CHF	•											•	LU1215454973	
<b>MSCI EMU Select Dynamic 50% Risk Weighted 100% Hedged to USD Index</b>															
ELOVU SW	UBS ETF - Factor MSCI EMU Low Volatility hedged to USD	•											•	LU1215455277	



Ticker/Symbol	Product Name	Product				Index Region				Primary Exchange				ISIN
		ETF	ETN	Futures	Options	Global	Americas	Europe/ Africa	Asia Pacific	Americas	Europe/ Africa	Asia Pacific		
<b>Country Strategy Indexes</b>														
<b>Factor Indexes</b>														
<b>MSCI Australia Select High Dividend Yield Index</b>														
SYI AU	SPDR MSCI Australia Select High Dividend Yield Fund	•												AU000000SYI8
<b>MSCI Australia IMI Diversified Multiple-Factor (AUD) Index</b>														
AUMF AU	iShares Edge MSCI Australia Multifactor ETF	•												AU000000AUMF0
<b>MSCI Australia IMI Select Minimum Volatility (AUD) Index</b>														
MVOL AU	iShares Edge MSCI Australia Minimum Volatility ETF	•												AU000000MVOL7
<b>MSCI Canada Minimum Volatility (CAD) Index</b>														
XMV CN	iShares MSCI Min Vol Canada Index ETF	•												CA46433N1096
<b>MSCI Canada Quality Index</b>														
FQC CN	First Asset MSCI Canada Quality Index Class ETF	•												CA31866L7051
<b>MSCI Canada Risk Weighted Index</b>														
RWC CN	First Asset MSCI Canada Low Risk Weighted ETF	•												CA31864C1032
<b>MSCI Canada IMI Select Diversified Multiple-Factor (CAD) Index</b>														
XFC CN	iShares MSCI Multifactor Canada Index ETF	•												CA46435M1095
<b>MSCI Canada High Dividend Yield 10% Security Capped Index</b>														
XDIV CN	iShares Core MSCI Canadian Quality Dividend Index ETF	•												CA46435V1094
<b>MSCI Canada Enhanced Value Capped Index</b>														
ZVC CN	BMO MSCI Canada Value Index ETF	•												CA05584R1038
<b>MSCI China A International Minimum Volatility Index</b>														
512390 CH	Ping An UOB MSCI China A Minimum Volatility Index ETF	•												CNE1000030Z4
<b>MSCI China Diversified Multi-Factor Index</b>														
3163 HK	Ping An MSCI China Multi-Factor ETF	•												HK0000462397
<b>MSCI China Quality Index</b>														
3166 HK	Ping An MSCI China Quality Factor ETF	•												HK0000462405
<b>MSCI China A Custom Quality Value 100 Index</b>														
515520	Dacheng MSCI China A Custom Quality Value 100 Index ETF	•												
<b>MSCI Japan High Dividend Yield Index</b>														
1478 JP	iShares MSCI Japan High Dividend ETF	•												JP3048150001
<b>MSCI Japan High Dividend Select 25 Index</b>														
2564 JP	GlobalX MSCI SuperDividend Japan ETF	•												JP3049050002
<b>MSCI Japan Equal Weighted Index</b>														
EWJE US	iShares MSCI Japan Equal Weighted ETF	•												US46435U3822
<b>MSCI Korea IMI Enhanced Value Capped Index</b>														
275290 KS	SAMSUNG KODEX MSCI Enhanced Value ETF	•												KR7275290005
<b>MSCI KOREA IMI Momentum Capped Index</b>														
275280 KS	SAMSUNG KODEX MSCI Momentum ETF	•												KR7275280006
<b>MSCI KOREA IMI Quality Capped Index</b>														
275300 KS	SAMSUNG KODEX MSCI Quality ETF	•												KR7275300002
<b>MSCI Nihonkabu (Japan ex-REITs) Minimum Volatility Index</b>														
1477 JP	iShares MSCI Japan Minimum Volatility ex-REITs ETF	•												JP3048140002
<b>MSCI Japan IMI Custom Liquidity and Yield Low Volatility</b>														
1399 JP	Listed Index Fund MSCI Japan Equity High Dividend Low Volatility	•												JP3048170009
<b>MSCI Mexico Select Momentum Capped Index</b>														
MEXMTUM MM	iShares MSCI Mexico Momentum TRAC	•												MX1BME0K0001
<b>MSCI Mexico Select Risk Weighted Index</b>														
MEXRISK MM	iShares MSCI Mexico Risk TRAC	•												MX1BME0J0004
<b>MSCI USA Diversified Multiple-Factor Index</b>														
LRGF US	iShares Edge MSCI Multifactor USA ETF	•												US46434V2824
IFSU LN	iShares Edge MSCI USA Multifactor UCITS ETF	•												IE00BZ0PKS76
UFSD LN	iShares Edge MSCI USA Multifactor UCITS ETF	•												IE00BG13YZ23
<b>MSCI USA Diversified Multiple-Factor (CAD) Index</b>														
XFS CN	iShares MSCI Multifactor USA Index ETF	•												CA46435R1082
XFS.U	iShares Edge MSCI Multifactor USA Index ETF USD	•												CA46435R2072
<b>MSCI USA Mid Cap Diversified Multiple-Factor Index</b>														
MIDF US	iShares Edge MSCI Multifactor USA Mid-Cap ETF	•												US46435U1438

Ticker/Symbol	Product Name	Product				Index Region					Primary Exchange				ISIN
		ETF	ETN	Futures	Options	Global	Americas	Europe/ Africa	Asia Pacific	Americas	Europe/ Africa	Asia Pacific			
<b>MSCI USA Enhanced Value Index</b>															
ZVU CN	BMO MSCI USA Value Index ETF	•					•								CA05584G1072
VLUE US	iShares Edge MSCI USA Value Factor ETF	•					•								US46432F3881
IUVL LN	iShares Edge MSCI USA Value Factor UCITS ETF	•					•				•				IE00BD1F4M44
IUVD LN	iShares Edge MSCI USA Value Factor UCITS ETF	•					•				•				IE00BFF5RX68
XVLU	iShares MSCI USA Value Factor Index ETF	•					•				•				LP68563697
<b>MSCI USA Equal Weighted Index</b>															
FMUE	EUREX MSCI USA Equal Weighted (USD/NTR)			•			•				•				
EWS	ICE Futures Europe MSCI USA Equal Weighted (USD/NTR)			•			•				•				
EUSA US	iShares MSCI USA Equal Weighted ETF	•					•				•				US4642866812
<b>MSCI USA Mid-Cap Equal Weighted Index</b>															
IUSZ LN	iShares Edge MSCI USA Size Factor UCITS ETF	•					•				•				IE00BD1F4K20
<b>MSCI USA High Dividend Yield Index</b>															
HDIQ LN	iShares MSCI USA Dividend IQ UCITS ETF	•					•				•				IE00BKM4H312
XDU CN	iShares Core MSCI US Quality Dividend Index ETF	•					•				•				CA46435Q1000
XDU.U CN	iShares Core MSCI US Quality Dividend Index ETF USD	•					•				•				CA46435Q1182
<b>MSCI USA Minimum Volatility (USD) Index</b>															
MIVU FP	Amundi MSCI USA Minimum Volatility Factor UCITS ETF	•					•				•				LU1589349734
XMVU LN	Xtrackers s MSCI USA Minimum Volatility UCITS ETF DR	•					•				•				IE00BDB7J586
USMV US	iShares Edge MSCI Min Vol USA ETF	•					•				•				US46429B6974
XMU CN	iShares MSCI Min Vol USA Index ETF	•					•				•				CA46433S1083
XMU.U CN	iShares Edge MSCI Min Vol USA Index ETF USD	•					•				•				CA46433S2073
020015 TT	President MSCI USA Minimum Volatility Index ETN		•				•				•		•		TW0000200153
MUV	ICE US MSCI USA Minimum Volatility (USD/NTR)			•			•				•				
<b>MSCI USA Minimum Volatility ESG Reduced Carbon Target Index</b>															
MVEA NA	iShares Edge MSCI USA Minimum Volatility ESG UCITS ETF - USD (Acc)	•					•				•				IE00BKVL7331
<b>MSCI USA Small Cap Minimum Volatility (USD) Index</b>															
SMMV US	iShares Edge MSCI Min Vol USA Small Cap ETF	•					•				•				US46435G4331
<b>MSCI USA Momentum Index</b>															
FMUM	EUREX MSCI USA Momentum (USD/NTR)			•			•				•				
MTUM US	iShares Edge MSCI USA Momentum Factor ETF	•					•				•				US46432F3964
IUMO LN	iShares Edge MSCI USA Momentum Factor UCITS ETF	•					•				•				IE00BD1F4N50
IUMD LN	iShares Edge MSCI USA Momentum Factor UCITS ETF	•					•				•				IE00BFF5RZ82
XMTM CN	iShares MSCI USA Momentum Factor Index ETF	•					•				•				LP68568873
<b>MSCI USA Prime Value Index</b>															
UBUS GR	UBS Irl ETF Plc - Factor MSCI USA Prime Value UCITS ETF	•					•				•				IE00BX7RR706
<b>MSCI USA Quality Index</b>															
ZUQ CN	BMO MSCI USA High Quality Index ETF	•					•				•				CA05580L1004
FMUQ	EUREX MSCI USA Quality (USD/NTR)			•			•				•				
UBUT GR	UBS Irl ETF plc - Factor MSCI USA Quality UCITS ETF	•					•				•				IE00BX7RRJ27
<b>MSCI USA Factor Mix A-Series Capped Index</b>															
QUS US	SPDR MSCI USA Strategic Factors ETF	•					•				•				US78468R8126
<b>MSCI USA Low Size Index</b>															
SIZE US	iShares Edge MSCI USA Size Factor ETF	•					•				•				US46432F3709
<b>MSCI USA Risk Weighted Top 150 Index</b>															
RWU.B CN	First Asset MSCI USA Low Risk Weighted ETF	•					•				•				CA31864E3077
<b>MSCI USA Sector Neutral Quality</b>															
QUAL US	iShares Edge MSCI USA Quality Factor ETF	•					•				•				US46432F3394
IUQA LN	iShares Edge MSCI USA Quality Factor UCITS ETF	•					•				•				IE00BD1F4L37
IUQD LN	iShares Edge MSCI USA Quality Factor UCITS ETF	•					•				•				IE00BF2QSQ20
XQLT	iShares MSCI USA Quality Factor Index ETF	•					•				•				CA46436J1057
<b>MSCI USA Select Dynamic 50% Risk Weighted Index</b>															
UBUR GR	UBS Irl ETF plc - Factor MSCI USA Low Volatility UCITS ETF	•					•				•				IE00BX7RQY03
<b>MSCI USA Select Factor Mix Index</b>															
USFM LN	UBS Irl ETF plc - MSCI USA Select Factor Mix UCITS ETF	•					•				•				IE00BDGV0308
USFMA	UBS (Irl) ETF plc-MSCI USA SelfFacMix U ETF (USD)Aa	•					•				•				IE00BDGV0415
<b>MSCI USA Small Cap Diversified Multiple-Factor Index</b>															
SMLF US	iShares Edge MSCI Multifactor USA Small-Cap ETF	•					•				•				US46434V2907

Ticker/Symbol	Product Name	Product				Index Region					Primary Exchange				ISIN
		ETF	ETN	Futures	Options	Global	Americas	Europe/ Africa	Asia Pacific	Americas	Europe/ Africa	Asia Pacific			
<b>MSCI USA Small Cap Value Weighted Index</b>															
ZPRV GR	SPDR MSCI USA Small Cap Value Weighted UCITS ETF	•						•				•		IE00BSPLC413	
<b>MSCI USA Value Weighted Index</b>															
FMUV	EUREX MSCI USA Value Weighted (USD/NTR)			•			•					•			
ZPRU GR	SPDR MSCI USA Value Weighted UCITS ETF	•					•					•		IE00BSPLC520	
<b>MSCI USA Small Select Value Momentum Blend Index</b>															
USVM US	USAA MSCI USA Small Cap Value Momentum Blend Index ETF	•					•					•		US90291F2048	
<b>MSCI USA Select Value Momentum Blend Index</b>															
ULVM US	USAA MSCI USA Small Cap Value Momentum Blend Index ETF	•					•					•		US90291F1057	
<b>Factor Hedged Indexes</b>															
<b>MSCI USA Diversified Multiple-Factor (CAD) 100% Hedged to CAD Index</b>															
XFA CN	iShares MSCI Multifactor USA Index ETF (CAD-Hedged)	•					•					•		CA46435N1078	
<b>MSCI USA High Dividend Yield 100% Hedged to CAD Index</b>															
XDUH CN	iShares Core MSCI US Quality Dividend Index ETF (CAD-Hedged)	•					•					•		CA46435T1049	
<b>MSCI USA Minimum Volatility (USD) 100% Hedged to CAD Index</b>															
XMS CN	iShares MSCI Min Vol USA Index ETF (CAD-Hedged)	•					•					•		CA46436R1073	
<b>MSCI USA Prime Value 100% Hedged to CHF Index</b>															
UPVLS SW	UBS Irl ETF plc - Factor MSCI USA Prime Value UCITS ETF hedged to CHF	•					•					•		IE00BX7RRC57	
<b>MSCI USA Prime Value 100% Hedged to EUR Index</b>															
UPVLE SW	UBS Irl ETF plc - Factor MSCI USA Prime Value UCITS ETF hedged to EUR	•					•					•		IE00BWT3KL42	
<b>MSCI USA Prime Value 100% Hedged to GBP Index</b>															
UPVL LN	UBS Irl ETF plc - Factor MSCI USA Prime Value UCITS ETF hedged to GBP	•					•					•		IE00BXDZNH00	
<b>MSCI USA Select Dynamic 50% Risk Weighted 100% Hedged to CHF Index</b>															
ULOVS SW	UBS Irl ETF plc - Factor MSCI USA Low Volatility UCITS ETF hedged to CHF	•					•					•		IE00BX7RR250	
<b>MSCI USA Select Dynamic 50% Risk Weighted 100% Hedged to EUR Index</b>															
ULOVE SW	UBS Irl ETF plc - Factor MSCI USA Low Volatility UCITS ETF hedged to EUR	•					•					•		IE00BWT3KJ20	
<b>MSCI USA Select Factor Mix 100% hedged to CHF Index</b>															
USMUF5 SW	UBS (Irl) ETF plc – MSCI USA Select Factor Mix UCITS ETF (hedged to CHF) A-acc	•					•					•		IE00BDGV0C91	
<b>MSCI USA Select Factor Mix 100% hedged to EUR Index</b>															
USMUFE SW	UBS (Irl) ETF plc – MSCI USA Select Factor Mix UCITS ETF (hedged to EUR) A-acc	•					•					•		IE00BDGV0746	
<b>MSCI USA Select Factor Mix 100% hedged to GBP Index</b>															
USMUFH SW	UBS (Irl) ETF plc – MSCI USA Select Factor Mix UCITS ETF (hedged to GBP) A-dis	•					•					•		IE00BDGV0852	
<b>MSCI USA Quality 100% Hedged to CHF Index</b>															
UQLTS SW	UBS Irl ETF plc - Factor MSCI USA Quality UCITS ETF hedged to CHF	•					•					•		IE00BX7RRN62	
<b>MSCI USA Quality 100% Hedged to EUR Index</b>															
UQLTE SW	UBS Irl ETF plc - Factor MSCI USA Quality UCITS ETF hedged to EUR	•					•					•		IE00BWT3KN65	
<b>MSCI USA Quality 100% Hedged to GBP Index</b>															
UQLT LN	UBS Irl ETF plc - Factor MSCI USA Quality UCITS ETF hedged to GBP	•					•					•		IE00BXDZNK39	

Ticker/Symbol	Product Name	Product				Index Region					Primary Exchange				ISIN
		ETF	ETN	Futures	Options	Global	Americas	Europe/ Africa	Asia Pacific	Americas	Europe/ Africa	Asia Pacific			
<b>Strategy Indexes</b>															
<b>Currency Hedged Indexes<sup>1</sup></b>															
<b>MSCI ACWI with Developed Markets 100% Hedged to CHF Index</b>															
ACCUKD SW	UBS ETFs PLC - MSCI ACWI SF UCITS ETF	•				•					•			IE00BZ2GTT26	
ACEUKD SW	UBS ETFs PLC - MSCI ACWI SF UCITS ETF	•				•					•			IE00BYVD7878	
ACGUKD SW	UBS ETFs PLC - MSCI ACWI SF UCITS ETF	•				•					•			IE00BYVDRF92	
ACUUKD SW	UBS ETFs PLC - MSCI ACWI SF UCITS ETF	•				•					•			IE00BYVDRC61	
ACWIE SW	UBS ETFs PLC - MSCI ACWI SF UCITS ETF	•				•					•			IE00BYM11K57	
ACWIS SW	UBS ETFs PLC - MSCI ACWI SF UCITS ETF	•				•					•			IE00BYM11L64	
<b>MSCI ACWI with Developed Markets 100% Hedged to EUR Index</b>															
SPP1	SPDR MSCI ACWI EUR Hdg UCITS ETF (Acc)	•				•					•			IE00BF1B7389	
<b>MSCI ACWI with Developed Markets 100% Hedged to USD Index</b>															
ACWIU SW	UBS ETFs plc - MSCI ACWI SF UCITS ETF (hedged to USD) A-acc	•				•					•			IE00BYM11J43	
<b>MSCI ACWI with Developed Markets 100% Hedged to JPY Index</b>															
ACWIJ SW	UBS ETFs plc - MSCI ACWI SF UCITS ETF Hedged to JPY A-acc	•				•					•			IE00BD495N16	
<b>MSCI ACWI ex USA US Dollar Hedged Index</b>															
DBAW US	Deutsche X-trackers MSCI All World ex US Hedged Equity ETF	•				•					•			US2330518208	
<b>MSCI ACWI ex USA 100% Hedged to USD Index</b>															
HAWX US	iShares Currency Hedged MSCI ACWI ex US ETF	•				•					•			US46435G8472	
<b>MSCI World 100% Hedged to CHF Index</b>															
IWDC SW	iShares MSCI World CHF Hedged UCITS ETF	•				•					•			IE00B8BVCK12	
<b>MSCI World 100% Hedged to EUR Index</b>															
MHN	ICE Futures Europe MSCI World Hedged to EUR (EUR/NTR)			•		•					•				
IWDE LN	iShares MSCI World EUR Hedged UCITS ETF	•				•					•			IE00B441G979	
IWLE GY	iShares Core MSCI World EUR Hedged UCITS ETF	•				•					•			IE00BKBF6H24	
<b>MSCI World EUR Hedged Index</b>															
XWEH GR	Xtrackers MSCI World Index UCITS ETF - 4C	•				•					•			LU0659579733	
WLDH FP	Lyxor UCITS ETF MSCI World - Monthly Hedged D-EUR	•				•					•			FR0011660927	
<b>MSCI World 100% Hedged to GBP Index</b>															
IGWD LN	iShares MSCI World GBP Hedged UCITS ETF	•				•					•			IE00B42YS929	
<b>MSCI World 100% Hedged to USD Index</b>															
WLDU LN	Lyxor UCITS ETF MSCI World Monthly Hedged - D USD	•				•					•			FR0011669845	
<b>MSCI World IMI 100% Hedged to AUD Index</b>															
IHWL AU	iShares Core MSCI World All Cap AUD Hedged ETF	•				•					•			AU000001HWL7	
<b>MSCI World ex Australia 100% Hedged to AUD Index</b>															
VGAD AU	Vanguard MSCI Index International Shares Hedged ETF	•				•					•			AU000000VGAD5	
<b>MSCI EAFE Adaptive Hedged to USD Index</b>															
DEFA US	iShares Adaptive Currency Hedged MSCI EAFE ETF	•				•					•			US46435G6567	
<b>MSCI EAFE 100% Hedged to CAD Index</b>															
XIN CN	iShares MSCI EAFE Index ETF (CAD Hedged)	•				•					•			CA46428L1004	
ZDM CN	BMO MSCI EAFE Hedged to CAD Index ETF	•				•					•			CA05577N1015	
<b>MSCI EAFE US Dollar Hedged Index</b>															
DBEF US	Deutsche X-trackers MSCI EAFE Hedged Equity ETF	•				•					•			US2330512003	
<b>MSCI EAFE 100% Hedged to USD Index</b>															
HEFA US	iShares Currency Hedged MSCI EAFE ETF	•				•					•			US46434V8037	
<b>MSCI EAFE IMI 100% Hedged to CAD Index</b>															
XFH CN	iShares Core MSCI EAFE IMI Index ETF (CAD-Hedged)	•				•					•			CA46435E1079	
<b>MSCI EAFE Small Cap 100% Hedged to USD Index</b>															
HSCZ US	iShares Currency Hedged MSCI EAFE Small-Cap ETF	•				•					•			US46435G8399	
<b>MSCI Europe 100% Hedged to CHF Index</b>															
EURCHA SW	UBS ETF - MSCI Europe UCITS ETF hedged to CHF A-Acc	•						•			•			LU1589327680	

<sup>1</sup> This category is defined by ETF products that apply currency hedges to a standard MSCI Index

Ticker/Symbol	Product Name	Product				Index Region					Primary Exchange				ISIN
		ETF	ETN	Futures	Options	Global	Americas	Europe/ Africa	Asia Pacific	Americas	Europe/ Africa	Asia Pacific			
<b>MSCI Europe 100% Hedged to EUR Index</b>															
UIMF GR	UBS ETF - MSCI Europe UCITS ETF hedged to EUR A-Acc	•						•				•			LU1600334798
<b>MSCI Europe US Dollar Hedged Index</b>															
DBEU US	Deutsche X-trackers MSCI Europe Hedged Equity ETF	•						•				•			US2330518539
XEOU LN	Xtrackers MSCI Europe INDEX UCITS ETF DR - 2C USD Hedged	•						•				•			LU1184092051
EUUSA SW	UBS ETF - MSCI Europe UCITS ETF hedged to USD A-Acc	•						•				•			LU1589327847
<b>MSCI Europe IMI 100% Hedged to CAD Index</b>															
XEH CN	iShares MSCI Europe IMI Index ETF CAD-Hedged	•						•				•			CA46434X1069
<b>MSCI Europe ex UK 100% Hedged to GBP Index</b>															
EUXS LN	iShares MSCI Europe ex-UK GBP Hedged UCITS ETF	•						•				•			IE00BVDJP67
<b>MSCI EMU 100% Hedged to CHF Index</b>															
XDUE SE	Xtrackers MSCI EMU INDEX UCITS ETF DR - 3C CHF Hedged	•						•				•			LU1215828218
EMUC SW	iShares MSCI EMU CHF Hedged UCITS ETF	•						•				•			IE00BWK1SP74
MFEC SW	Lyxor UCITS ETF MSCI EMU - Monthly Hedged CHF	•						•				•			FR0012413326
EMUCHF SW	UBS ETF – MSCI EMU UCITS ETF (hedged to CHF) A-acc	•						•				•			LU1169819635
<b>MSCI EMU UK 100% Hedged to GBP Index</b>															
XD5S LN	Xtrackers MSCI EMU Index UCITS ETF DR - 2C GBP Hedged	•						•				•			LU1127516455
UB0E LN	UBS ETF – MSCI EMU UCITS ETF (hedged to GBP) A-acc	•						•				•			LU1169820138
UB0F LN	UBS ETF – MSCI EMU UCITS ETF (hedged to GBP) A-dis	•						•				•			LU1169819981
<b>MSCI EMU 100% Hedged to SGD Index</b>															
EMUP SW	UBS ETF - MSCI EMU UCITS ETF hedged to SGD A-acc	•						•				•			LU1169820641
<b>MSCI EMU 100% Hedged to USD Index</b>															
XD5D LN	Xtrackers MSCI EMU INDEX UCITS ETF DR - 2C USD Hedged	•						•				•			LU1127514245
MHE	ICE Futures Europe MSCI EMU Hedged to USD (USD/NTR)			•				•				•			
HEZU US	iShares Currency Hedged MSCI Eurozone ETF	•						•				•			US46434V6395
CEBP GR	iShares MSCI EMU USD Hedged UCITS ETF	•						•				•			IE00BWN1T31
CEUU NA	iShares Core MSCI EMU USD Hedged UCITS ETF	•						•				•			IE00BKB6616
EMUUSD SW	UBS ETF – MSCI EMU UCITS ETF (hedged to USD) A-acc	•						•				•			LU1169819809
EMUSD SW	UBS ETF – MSCI EMU UCITS ETF (hedged to USD) A-dis	•						•				•			LU1169819718
<b>MSCI EMU IMI US Dollar Hedged Index</b>															
DBEZ US	Deutsche X-trackers MSCI Eurozone Hedged Equity ETF	•						•				•			US2330516970
<b>MSCI Emerging Markets US Dollar Hedged Index</b>															
DBEM US	Deutsche X-trackers MSCI Emerging Markets Hedged Equity ETF	•				•						•			US2330511013
<b>MSCI Emerging Markets 100% Hedged to USD Index</b>															
HEEM US	iShares Currency Hedged MSCI Emerging Markets ETF	•				•						•			US46434G5099
<b>MSCI Kokusai JPY Hedged Index</b>															
2514 JP	Next Funds International Equity MSCI-Kokusai Yen-Hedged ETF	•				•						•			JP3048650000

## Short & Leveraged<sup>2</sup>

### MSCI EAFE Index

DZK US	Direxion Developed Markets Bull 3X Shares	•				•						•			US25459W7891
EFZ US	ProShares Short MSCI EAFE	•				•						•			US74347R3701
EFO US	ProShares Ultra MSCI EAFE	•				•						•			US74347X5005
EFU US	ProShares UltraShort MSCI EAFE	•				•						•			US74347R3396
<b>MSCI EAFE Leverage (2X)</b>															
550054 KS	NH QV Leverage MSCI EAFE ETN 54		•			•						•			KRG552100544
<b>MSCI EAFE Leveraged Short (-2X)</b>															
550055 KS	NH QV Inverse Leverage MSCI EAFE ETN 55		•			•						•			KRG552100551
<b>MSCI EAFE Short (-1X)</b>															
550053 KS	NH QV Inverse MSCI EAFE ETN 53		•			•						•			KRG552100536

<sup>2</sup> This category is defined by ETF products that leverage (+2x or +3x) or short (-1x, -2x, or -3x) a standard MSCI Index

Ticker/Symbol	Product Name	Product				Index Region					Primary Exchange				ISIN
		ETF	ETN	Futures	Options	Global	Americas	Europe/ Africa	Asia Pacific	Americas	Europe/ Africa	Asia Pacific			
<b>MSCI Emerging Markets Index</b>															
C128 GR	ComStage ETF MSCI Emerging Markets Leveraged 2x Daily TRN UCITS ETF	•				•							•		LU0675401409
EDZ US	Direxion Emerging Markets Bear 3+	•				•							•		US25459W4823
EDC US	Direxion Emerging Markets Bull 3+	•				•							•		US25459Y6867
225060 KS	MiraeAsset TIGER Synth-MSCI EM Leverage ETF H	•				•								•	KR7225060003
EUM US	ProShares Short MSCI Emerging Markets	•				•							•		US74347R3966
EET US	ProShares Ultra MSCI Emerging Markets	•				•							•		US74347X3026
EEV US	ProShares UltraShort MSCI Emerging Markets	•				•							•		US74347X5757

Ticker/Symbol	Product Name	Product				Index Region					Primary Exchange				ISIN
		ETF	ETN	Futures	Options	Global	Americas	Europe/ Africa	Asia Pacific	Americas	Europe/ Africa	Asia Pacific			
<b>Country Strategy Indexes</b>															
<b>Currency Hedged Indexes<sup>3</sup></b>															
<b>MSCI Australia 100% Hedged to CHF Index</b>															
AUHCHA SW	UBS Irl ETF plc - MSCI Australia UCITS ETF (hedged to CHF) A-acc	•													IE00BX7RS779
<b>MSCI Australia 100% Hedged to EUR Index</b>															
AUHEUA SW	UBS Irl ETF plc - MSCI Australia UCITS ETF (hedged to EUR) A-acc	•													IE00BWT3KS11
<b>MSCI Australia 100% Hedged to GBP Index</b>															
AUHGBA SW	UBS Irl ETF plc - MSCI Australia UCITS ETF (hedged to GBP) A-acc	•													IE00BXDNQ90
<b>MSCI Australia 100% Hedged to USD Index</b>															
AUHUSA SW	UBS Irl ETF plc - MSCI Australia UCITS ETF (hedged to USD) A-acc	•													IE00BX7RS555
<b>MSCI Canada 100% Hedged to CHF Index</b>															
CAHCHA SW	UBS ETF-MSCI Canada UCITS ETF hedged to CHF	•					•								LU1130155432
<b>MSCI Canada 100% Hedged to GBP Index</b>															
CAHGBD SW	UBS ETF-MSCI Canada UCITS ETF hedged to GBP	•					•								LU1130156596
UC87 LN	UBS ETF-MSCI Canada UCITS ETF hedged to GBP	•					•								LU1130156323
<b>MSCI Canada 100% Hedged to SGD Index</b>															
CAHSGA SW	UBS ETF - MSCI Canada UCITS ETF hedged to SGD A-Acc	•					•								LU1130156166
<b>MSCI Canada 100% Hedged to USD Index</b>															
HEWC US	iShares Currency Hedged MSCI Canada ETF	•					•								US46435G7060
CAHUSA SW	UBS ETF-MSCI Canada UCITS ETF hedged to USD	•					•								LU1130155861
<b>MSCI Germany 100% Hedged to USD Index</b>															
HEWG US	iShares Currency Hedged MSCI Germany ETF	•						•							US46434V7047
<b>MSCI Germany US Dollar Hedged Index</b>															
DBGR US	Deutsche X-trackers MSCI Germany Hedged Equity ETF	•							•						US2330514082
<b>MSCI Japan 100% Hedged to CHF Index</b>															
XM CJ SW	Xtrackers MSCI Japan Index UCITS ETF DR	•								•					LU1215827756
IJPC SW	iShares MSCI Japan CHF Hedged UCITS ETF	•								•					IE00B8J37J31
JPNCHF SW	UBS ETF – MSCI Japan UCITS ETF (hedged to CHF) A-acc	•								•					LU1169821888
<b>MSCI Japan 100% Hedged to EUR Index</b>															
XM K9 GR	Xtrackers MSCI Japan EUR Hedged TRN Index UCITS ETF	•								•					LU0659580079
MHI	ICE Futures Europe MSCI Japan Hedged to EUR (EUR/NTR)			•						•					
IJPE LN	iShares MSCI Japan Monthly EUR Hedged UCITS ETF	•								•					IE00B42Z5J44
ZPDW GR	SPDR MSCI Japan UCITS ETF EUR hedged	•								•					IE00BZ0G8C04
JPEUR SW	UBS ETF – MSCI Japan UCITS ETF (hedged to EUR) A-dis	•								•					LU1169822001
UFMA GR	UBS ETF – MSCI Japan UCITS ETF (hedged to EUR) A-acc	•								•					LU1169822266
<b>MSCI Japan 100% Hedged to GBP Index</b>															
IJPH LN	iShares MSCI Japan GBP Hedged UCITS ETF	•								•					IE00B7XYN974
LCJG LN	Lyxor Core MSCI Japan (DR) UCITS ETF Daily Hedged to GBP - Acc	•								•					LU1781541682
XM JG LN	Xtrackers MSCI Japan GBP Hedged TRN Index UCITS ETF	•								•					LU0659580236
UB0C LN	UBS ETF – MSCI Japan UCITS ETF (hedged to GBP) A-acc	•								•					LU1169822423
UB0D LN	UBS ETF – MSCI Japan UCITS ETF (hedged to GBP) A-dis	•								•					LU1169822340
<b>MSCI Japan 100% Hedged to SGD Index</b>															
JPNP SW	UBS ETF - MSCI Japan UCITS ETF hedged to SGD A-acc	•								•					LU1169822936
<b>MSCI Japan 100% Hedged to USD Index</b>															
3160 HK	BMO MSCI Japan Hedged to USD ETF	•								•					HK0000280997
HEWJ US	iShares Currency Hedged MSCI Japan ETF	•								•					US46434V8862
IJPD LN	iShares MSCI Japan USD Hedged UCITS ETF	•								•					IE00BCLWRG39
JPUSD SW	UBS ETF – MSCI Japan UCITS ETF (hedged to USD) A-acc	•								•					LU1169822779
<b>MSCI Japan US Dollar Hedged Index</b>															
DBJP US	Deutsche X-trackers MSCI Japan Hedged Equity ETF	•								•					US2330515071

<sup>3</sup> This category is defined by ETF products that apply currency hedges to a standard MSCI Index

Ticker/Symbol	Product Name	Product				Index Region					Primary Exchange				ISIN
		ETF	ETN	Futures	Options	Global	Americas	Europe/ Africa	Asia Pacific	Americas	Europe/ Africa	Asia Pacific			
XMUJ LN	Xtrackers MSCI Japan Index UCITS ETF USD Hedged	•							•					•	LU0927735406
<b>MSCI Mexico IMI 25/50 100% Hedged to USD Index</b>															
HEWW US	iShares Currency Hedged MSCI Mexico ETF	•					•							•	US46435G8050
<b>MSCI Switzerland 100% Hedged to EUR Index</b>															
SWEUAH SW	UBS ETF CH - MSCI Switzerland 100% Hedged to EUR	•												•	CH0226274204
<b>MSCI Switzerland 100% Hedged to USD Index</b>															
SWUSAH SW	UBS ETF CH - MSCI Switzerland 100% Hedged to USD	•												•	CH0226274212
<b>MSCI Switzerland 20/35 100% Hedged to GBP Index</b>															
S2HGBA SW	UBS ETF - MSCI Switzerland 20/35 UCITS ETF hedged to GBP	•												•	LU1169830525
S2HGBD SW	UBS ETF - MSCI Switzerland 20/35 UCITS ETF hedged to GBP	•												•	LU1169830442
<b>MSCI Switzerland 20/35 100% Hedged to EUR Index</b>															
S2EUBH SW	UBS ETF - MSCI Switzerland 20/35 100% Hedged to EUR UCITS ETF	•												•	LU0977260941
S2EUAH SW	UBS ETF - MSCI Switzerland 20/35 hedged to EUR UCITS ETF	•												•	LU0979892220
CHEUR SW	UBS ETF – MSCI Switzerland 20/35 UCITS ETF (hedged to EUR) A-acc	•												•	LU1169830103
CHEURD SW	UBS ETF – MSCI Switzerland 20/35 UCITS ETF (hedged to EUR) A-dis	•												•	LU1169830012
<b>MSCI Switzerland 20/35 100% Hedged to SGD Index</b>															
S2HSGA SW	UBS ETF - MSCI Switzerland 20/35 UCITS ETF hedged to SGD	•												•	LU1169830871
<b>MSCI Switzerland 20/35 100% Hedged to USD Index</b>															
S2USBH SW	UBS ETF - MSCI Switzerland 20/35 100% Hedged to USD UCITS ETF	•												•	LU0977261089
S2USAH SW	UBS ETF - MSCI Switzerland 20/35 hedged to USD UCITS ETF	•												•	LU0979892659
CHUSD SW	UBS ETF – MSCI Switzerland 20/35 UCITS ETF (hedged to USD) A-acc	•												•	LU1169830368
CHUSDD SW	UBS ETF – MSCI Switzerland 20/35 UCITS ETF (hedged to USD) A-dis	•												•	LU1169830285
<b>MSCI United Kingdom 100% Hedged to CHF Index</b>															
UKCHBH SW	UBS ETF MSCI United Kingdom 100% Hedged to CHF UCITS ETF	•												•	LU0950671072
<b>MSCI United Kingdom 100% Hedged to EUR Index</b>															
UKEUBH SW	UBS ETF MSCI United Kingdom 100% Hedged to EUR UCITS ETF	•												•	LU0950671239
UFMB GR	UBS ETF – MSCI United Kingdom UCITS ETF (hedged to EUR) A-acc	•												•	LU1169821292
<b>MSCI United Kingdom 100% Hedged to SGD Index</b>															
UKSGD SW	UBS ETF - MSCI United Kingdom UCITS ETF hedged to SGD A-acc	•												•	LU1169821615
<b>MSCI United Kingdom 100% Hedged to USD Index</b>															
HEWU US	iShares Currency Hedged MSCI United Kingdom ETF	•												•	US46435G8621
UKUSBH SW	UBS ETF MSCI United Kingdom 100% Hedged to USD UCITS ETF	•												•	LU0950671403
UKUSD SW	UBS ETF – MSCI United Kingdom UCITS ETF (hedged to USD) A-acc	•												•	LU1169821458
<b>MSCI USA 100% Hedged to CHF Index</b>															
USCHWH SW	UBS Irl ETF plc - MSCI USA 100% Hedged to CHF UCITS ETF	•												•	IE00BD4TYL27
UKCHF SW	UBS ETF – MSCI United Kingdom UCITS ETF (hedged to CHF) A-acc	•												•	LU1169820997
<b>MSCI USA 100% Hedged to EUR Index</b>															
USEUWH SW	UBS Irl ETF plc - MSCI USA 100% Hedged to EUR UCITS ETF	•												•	IE00BD4TYG73
USEUYH SW	UBS Irl ETF plc - MSCI USA hedged to EUR UCITS ETF	•												•	IE00BD4TYF66
<b>MSCI USA 100% Hedged to GBP Index</b>															
USGBPA SW	UBS (Irl) ETF plc – MSCI USA UCITS ETF (hedged to GBP) A-acc	•												•	IE00BYQ00Y50
USGBPD SW	UBS (Irl) ETF plc – MSCI USA UCITS ETF (hedged to GBP) A-dis	•												•	IE00BYQ00X44
<b>MSCI USA Risk Weighted Top 150 Hedged to CAD Index</b>															
RWU CN	First Asset MSCI USA Low Risk Weighted ETF (CAD Hedged)	•												•	CA31864E1097



Ticker/Symbol	Product Name	Product				Index Region					Primary Exchange				ISIN
		ETF	ETN	Futures	Options	Global	Americas	Europe/ Africa	Asia Pacific	Americas	Europe/ Africa	Asia Pacific			
<b>Short &amp; Leveraged<sup>4</sup></b>															
<b>MSCI Brazil Index</b>															
UBR US	ProShares Ultra MSCI Brazil Capped	•					•				•				US74347X5427
BZQ US	ProShares UltraShort MSCI Brazil Capped	•					•				•				US74348A6736
<b>MSCI China Free Leveraged 2X Daily Index</b>															
00766L TT	Taishin MSCI China Free Leveraged 2X Daily ETF	•									•		•		TW00000766L4
<b>MSCI China Free 50 ex A&amp;B Shares Leveraged (2X) Index</b>															
00753L TT	CTBC MSCI China Free 50 ex A and B Daily Leveraged 2X ETF	•									•		•		TW00000753L2
<b>MSCI China Free 50 ex A&amp;B Shares Index</b>															
00752 TT	CTBC MSCI China Free 50 ex A and B ETF	•									•		•		TW0000075209
<b>MSCI India Index</b>															
INDL US	Direxion Daily MSCI India Bull	•									•	•			US25490K3317
<b>MSCI Japan Index</b>															
EZJ US	ProShares Ultra MSCI Japan	•									•	•			US74347X7084
EWV US	ProShares UltraShort MSCI Japan	•									•	•			US74347R3479
JPNL US	Direxion Daily Japan 3x Bull Shares	•									•	•			US25459Y4136
<b>MSCI Mexico IMI 25/50 Index</b>															
MEXX US	Direxion Daily MSCI Mexico Bull 3x Shares	•					•				•				US25460E7528
<b>MSCI USA Index</b>															
C2U FP	Amundi ETF Short MSCI USA Daily UCITS ETF	•					•						•		FR0010791194
CL2 FP	Amundi ETF MSCI Leveraged USA Daily UCITS ETF - USD	•					•						•		FR0010755611
<b>MSCI US Investable Market Real Estate 25/50 Index</b>															
DRV US	Direxion Daily Real Estate Bear 3X Shares	•					•				•				US25459Y6602
DRN US	Direxion Daily Real Estate Bull 3X Shares	•					•				•				US25459W7552

<sup>4</sup> This category is defined by ETF products that leverage (+2x or +3x) or short (-1x, -2x, or -3x) a standard MSCI Index

Ticker/Symbol	Product Name	Product				Index Region					Primary Exchange				ISIN
		ETF	ETN	Futures	Options	Global	Americas	Europe/ Africa	Asia Pacific	Americas	Europe/ Africa	Asia Pacific			
<b>Thematic Indexes</b>															
<b>Economic Exposure Indexes</b>															
<b>MSCI ACWI Emerging Market Consumer Growth Index</b>															
CEMG LN	iShares MSCI Emerging Markets Consumer Growth UCITS ETF	•				•						•			IE00BKM4H197
<b>Megatrend Indexes</b>															
<b>MSCI ACWI IMI Disruptive Technology ESG Filtered Index</b>															
UNIC FP	Lyxor MSCI Disruptive Technology ESG Filtered (DR) UCITS ETF - Acc	•				•						•			LU2023678282
<b>MSCI ACWI IMI Millennials ESG Filtered Index</b>															
MILL FP	Lyxor MSCI Millennials ESG Filtered (DR) UCITS ETF - Acc	•				•						•			LU2023678449
<b>MSCI ACWI IMI Digital Economy ESG Filtered Index</b>															
EBUY FP	Lyxor MSCI Digital Economy ESG Filtered (DR) UCITS ETF - Acc	•				•						•			LU2023678878
<b>MSCI ACWI IMI Digital Economy ESG Filtered Index</b>															
ELCR FP	Lyxor MSCI Future Mobility ESG Filtered (DR) UCITS ETF - Acc	•				•						•			LU2023679090
<b>MSCI ACWI IMI Smart Cities ESG Filtered Index</b>															
IQCT FP	Lyxor MSCI Smart Cities ESG Filtered (DR) UCITS ETF - Acc	•				•						•			LU2023679256
<b>Commodity Producers Indexes</b>															
<b>MSCI ACWI Select Gold Miners IMI</b>															
RING US	iShares MSCI Global Gold Miners ETF	•				•						•			US4642863355
<b>MSCI ACWI Select Metals &amp; Mining Producers ex Gold and Silver IMI</b>															
PICK US	iShares MSCI Global Metals & Mining Producers ETF	•				•						•			US4642863686
<b>MSCI ACWI Select Energy Producers IMI</b>															
FILL US	iShares MSCI Global Energy Producers ETF	•				•						•			US4642863439
<b>MSCI ACWI Select Agriculture Producers IMI</b>															
VEGI US	iShares MSCI Global Agriculture Producers ETF	•				•						•			US4642863504
<b>MSCI ACWI Select Silver Miners IMI</b>															
SLVP US	iShares MSCI Global Silver Miners ETF	•				•						•			US4642863272
<b>Cyclical &amp; Defensive Sectors Indexes</b>															
<b>MSCI Emerging Markets IMI - EAFE IMI 150/150 Return Spread Index</b>															
RWED US	Direxion MSCI Emerging Over Developed Markets ETF	•				•						•			US25460E3808
<b>MSCI EAFE IMI - Emerging Markets IMI 150/150 Return Spread Index</b>															
RWDE US	Direxion MSCI Developed Over Emerging Markets ETF	•				•						•			US25460E3725
<b>MSCI USA Cyclical Sectors - Defensive Sectors 150/150 Return Spread Index</b>															
RWCD US	Direxion MSCI Cyclical Over Defensives ETF	•					•					•			US25460E4145
<b>MSCI USA Defensive Sectors - Cyclical Sectors 150/150 Return Spread Index</b>															
RWDC US	Direxion MSCI Defensives Over Cyclical ETF	•					•					•			US25460E3980
<b>MSCI USA ESG Universal Top - Bottom 150/50 Return Spread Index</b>															
ESNG US	Direxion MSCI USA ESG - Leaders vs Laggards ETF	•					•					•			US25460G3020

Ticker/Symbol	Product Name	Product				Index Region					Primary Exchange				ISIN
		ETF	ETN	Futures	Options	Global	Americas	Europe/ Africa	Asia Pacific	Americas	Europe/ Africa	Asia Pacific			
<b>ESG Indexes</b>															
<b>Faith-Based Indexes</b>															
<b>MSCI World Islamic Index</b>															
ISWD LN	iShares MSCI World Islamic UCITS ETF	•				•						•		IE00B27YCN58	
<b>MSCI Emerging Markets Islamic Index</b>															
ISDE LN	iShares MSCI Emerging Markets Islamic UCITS ETF	•				•						•		IE00B27YCP72	
<b>MSCI Europe Select Catholic Principles ESG Leaders 10/40 Index</b>															
ICFP GR	Invesco MSCI Europe ESG Leaders Catholic Principles UCITS ETF	•					•					•		IE00BG0NY640	
<b>MSCI USA Islamic Index</b>															
ISUS LN	iShares MSCI USA Islamic UCITS ETF	•					•					•		IE00B296QM64	
<b>MSCI Malaysia IMI Islamic High Dividend Yield 10/40 Index</b>															
MEMMID MK	MyETF MSCI Malaysia Islamic Dividend	•							•				•	MYL0824EA002	
<b>MSCI AC ASEAN IMI Islamic High Dividend Yield 10/40 Index</b>															
MEMSID MK	MyETF MSCI SEA Islamic Dividend	•							•				•	MYL0825EA009	
<b>Regional Indexes</b>															
<b>MSCI ACWI Low Carbon Target Index</b>															
CRBN US	iShares MSCI ACWI Low Carbon Target ETF	•				•						•		US46434V4648	
LOWC US	SPDR MSCI ACWI Low Carbon Target ETF	•				•						•		US78463X1946	
<b>MSCI ACWI Sustainable Impact Index</b>															
SDG US	iShares MSCI Global Impact ETF	•				•						•		US46435G5320	
<b>MSCI ACWI ESG Universal 5% Issuer Capped Index</b>															
AWESGJ SW	UBS Irl ETF Plc - MSCI ACWI ESG Universal UCITS ETF	•				•						•		IE00BYVHJM24	
AWESG	UBS(Irl)ETF plc-MSCI ACWI ESG Univ UCI ETF(USD)Ad	•				•						•		IE00BDQZMX67	
<b>MSCI ACWI ESG Universal 5% Issuer Capped with Developed Markets 100% Hedged to USD Index</b>															
AWESGW SW	UBS (Irl) ETF plc – MSCI ACWI ESG Universal UCITS ETF (hedged to USD) A-acc	•				•						•		IE00BDQZNI13	
<b>MSCI ACWI ESG Universal 5% Issuer Capped with Developed Markets 100% Hedged to CHF Index</b>															
AWESGS SW	UBS (Irl) ETF plc – MSCI ACWI ESG Universal UCITS ETF (hedged to CHF) A-acc	•				•						•		IE00BDQZNI74	
AWESGT SW	UBS (Irl) ETF plc – MSCI ACWI ESG Universal UCITS ETF (hedged to CHF) A-dis	•				•						•		IE00BDQZNI67	
<b>MSCI ACWI ESG Universal 5% Issuer Capped with Developed Markets 100% Hedged to EUR Index</b>															
AWESGE SW	UBS (Irl) ETF plc – MSCI ACWI ESG Universal UCITS ETF (hedged to EUR) A-acc	•				•						•		IE00BDQZNI37	
<b>MSCI ACWI ESG Universal 5% Issuer Capped with Developed Markets 100% Hedged to GBP Index</b>															
AWESGG SW	UBS Irl ETF Plc - MSCI ACWI ESG Universal UCITS ETF	•				•						•		IE00BDQZNI50	
<b>MSCI ACWI ex USA ESG Leaders Index</b>															
ACSG US	Xtrackers MSCI ACWI ex USA ESG Leaders Equity ETF	•				•						•		US2330511922	
<b>MSCI World Climate Change Index</b>															
CLWD FP	Lyxor MSCI World Climate Change (DR) UCITS ETF - Acc	•				•						•		LU2056739464	
<b>MSCI World Climate Change ESG Select Index</b>															
D6RP GY	Deka MSCI World Climate Change ESG UCITS ETF EUR	•				•						•		DE000ETFL581	
<b>MSCI World Climate Change Paris Aligned Select Index</b>															
PABW FP	Amundi MSCI World Climate Paris Aligned PAB UCITS ETF DR A	•				•						•		LU2182388400	
<b>MSCI World ESG Screened Index</b>															
SAWD LN	iShares MSCI World ESG Screened UCITS ETF	•				•						•		IE00BFNM3J75	
SDWD LN	iShares MSCI World ESG Screened UCITS ETF	•				•						•		IE00BFNM3K80	
FMSW	EUREX MSCI World ESG Screened Index (USD/NTR)		•			•						•			
<b>MSCI World ESG Universal Select Business Screens Index</b>															
ESGW SW	Invesco MSCI World ESG Universal Screened UCITS ETF	•				•						•		IE00BJQRDK83	
<b>MSCI World ESG Universal Select Index</b>															
SBIW GY	Amundi MSCI World ESG Universal Select DR Cap ETF	•				•						•		LU2109786587	
<b>MSCI World ESG Enhanced Focus Index</b>															
EEWD LN	iShares MSCI World ESG Enhanced UCITS ETF	•				•						•		IE00BG11HV38	
LP68539052	iShares MSCI World ESG Enhanced UCITS ETF USD (Acc)	•				•						•		IE00BHZPJ569	

Ticker/Symbol	Product Name	Product				Index Region					Primary Exchange				ISIN
		ETF	ETN	Futures	Options	Global	Americas	Europe/ Africa	Asia Pacific	Americas	Europe/ Africa	Asia Pacific			
<b>MSCI World Low Carbon Leaders Index</b>															
LWCU FP	Amundi ETF MSCI World Low Carbon UCITS ETF - USD	•				•						•			FR0012658003
LWCR FP	Amundi ETF MSCI World Low Carbon UCITS ETF - EUR	•				•						•			FR0012657963
<b>MSCI World ESG Leaders Index</b>															
WDESG SW	CSIF (IE) MSCI World ESG Leaders Blue UCITS ETF	•				•						•			IE00BJBYDQ02
LFW	ICE US MSCI World ESG Leaders Index (USD/NTR)			•		•						•			
ESGG	BMO MSCI Global ESG Leaders Index ETF	•				•						•			CA09662J1084
<b>MSCI World ex Controversial Weapons Index</b>															
EWRD FP	BNP Paribas Easy - MSCI World ex Controversial Weapons UCITS ETF	•				•						•			LU1291108642
EMWE FP	BNP Paribas Easy - MSCI World ex Controversial Weapons UCITS ETF	•				•						•			LU1615092217
<b>MSCI World ESG Leaders Low Carbon Ex Tobacco Involvement 5% Index</b>															
XZWO GR	Xtrackers ESG MSCI World UCITS ETF	•				•						•			IE00BZ02LR44
<b>MSCI World ESG Leaders Select 5% Issuer Capped Index</b>															
SADW GY	Amundi MSCI World ESG Leaders Select UCITS DRC ETF	•				•						•			LU2109787122
<b>MSCI World ESG Leaders Minimum Volatility (USD) Index</b>															
WDMVO SW	CSIF (IE) MSCI World ESG Leaders Minimum Volatility Blue UCITS ETF	•				•						•			IE00BMDX0M10
<b>MSCI World Select ESG Rating and Trend Leaders Index</b>															
LESW GR	Lyxor MSCI USA ESG Trend Leaders UCITS ETF	•				•						•			LU1792117779
<b>MSCI World ex Australia ex Fossil Fuels SRI Low Carbon Capped Index</b>															
ESGI AU	VanEck Vectors MSCI International Sustainable Equity ETF	•				•						•			AU0000001356
<b>MSCI World ESG Select Impact ex Fossil Fuels Index</b>															
CESG.B	CI First Asset MSCI World ESG Impact ETF Unhedged	•				•						•			CA12554W2031
<b>MSCI World ESG Select Impact ex Fossil Fuels Index Hedged 100% to CAD</b>															
CESG	CI First Asset MSCI World ESG Impact ETF Hedged	•				•						•			CA12554W1041
<b>MSCI EAFE ESG Screened Index</b>															
FMSF	ICE US MSCI EAFE ESG Screened Index (USD/NTR)	•				•						•			
<b>MSCI EAFE Choice ESG Screened Index</b>															
DMXF US	iShares ESG Advanced MSCI EAFE ETF	•				•						•			US46436E7590
XDSR CN	iShares ESG Advanced MSCI EAFE Index ETF	•				•						•			CA46438D1069
<b>MSCI EAFE Extended ESG Focus Index</b>															
ESGD US	iShares ESG Aware MSCI EAFE ETF	•				•						•			US46435G5163
XSEA CN	iShares ESG Aware MSCI EAFE Index ETF	•				•						•			CA46436M1086
<b>MSCI EAFE ex Fossil Fuels Index</b>															
EFAX US	SPDR MSCI EAFE Fossil Fuel Reserves Free ETF	•				•						•			US78470E1064
<b>MSCI EAFE ESG Leaders Index</b>															
EASG US	Xtrackers MSCI EAFE ESG Leaders Equity ETF	•				•						•			US2330512185
LFG	ICE US MSCI EAFE ESG Leaders Index (USD/NTR)			•		•						•			
ESGE	BMO MSCI EAFE ESG Leaders Index ETF	•				•						•			CA05600J1012
<b>MSCI Emerging Markets Climate Change Index</b>															
CLEM FP	Lyxor MSCI EM Climate Change UCITS ETF - Acc	•				•						•			LU2056738144
<b>MSCI Emerging Markets ESG Enhanced Focus Index</b>															
EEDM	iShares MSCI EM ESG Enhanced UCITS ETF USD (Dist)	•				•						•			IE00BHZPJ122
EDM2	iShares MSCI EM ESG Enhanced UCITS ETF USD (Acc)	•				•						•			IE00BHZPJ239
<b>MSCI Emerging Markets Extended ESG Focus Index</b>															
ESGE US	iShares ESG Aware MSCI EM ETF	•				•						•			US46434G8630
XSEM CN	iShares ESG Aware MSCI Emerging Markets Index ETF	•				•						•			CA46437F1027
<b>MSCI Emerging Markets ESG Leaders Low Carbon ex Tobacco Involvement 5% Index</b>															
XZEM	Xtrackers ESG MSCI Emerging Markets UCITS 1C ETF	•				•						•			IE00BG370F43
<b>MSCI Emerging Markets ex Fossil Fuels Index</b>															
EEMX US	SPDR MSCI Emerging Markets Fossil Fuel Reserves Free ETF	•				•						•			US78470E2054
<b>MSCI Emerging Markets Select ESG Rating and Trend Leaders Index</b>															
LESG GR	Lyxor MSCI EM ESG Trend Leaders UCITS ETF	•				•						•			LU1769088581
<b>MSCI Emerging Markets IMI ESG Screened Index</b>															
SAEM LN	iShares MSCI EM IMI ESG Screened UCITS ETF	•				•						•			IE00BFNM3P36
SEDM LN	iShares MSCI EM IMI ESG Screened UCITS ETF	•				•						•			IE00BFNM3N12

Ticker/Symbol	Product Name	Product				Index Region					Primary Exchange				ISIN
		ETF	ETN	Futures	Options	Global	Americas	Europe/ Africa	Asia Pacific	Americas	Europe/ Africa	Asia Pacific			
<b>MSCI Emerging Markets ESG Screened Index</b>															
FMSM	EUREX MSCI Emerging Markets ESG Screened Index (USD/NTR)			•	•										
<b>MSCI Emerging Markets ESG Leaders Index</b>															
EMSG US	Xtrackers MSCI Emerging Markets ESG Leaders Equity ETF	•						•							US2330512268
LFM	ICE US MSCI EM ESG Leaders Index (USD/NTR)			•	•					•					
<b>MSCI Emerging Markets ESG Leaders 5% Issuer Capped Index</b>															
SADM GY	Amundi MSCI Emerging ESG Leaders UCITS ETF DR	•			•										LU2109787551
<b>MSCI Emerging Markets Extended ESG Leaders 5% Issuer Capped Index</b>															
LDEM US	iShares ESG MSCI EM Leaders ETF	•			•					•					US46436E6014
<b>MSCI Europe Climate Change Index</b>															
LWCE FP	Amundi Index MSCI Europe Climate Change UCITS ETF DR (C)	•			•							•			LU2130768844
D6RR GY	Deka MSCI Europe Climate Change ESG UCITS ETF EUR	•			•							•			DE000ETFL565
CLEU FP	Lyxor MSCI Europe Climate Change (DR) UCITS ETF - Acc	•			•							•			LU2056738490
<b>MSCI Europe Climate Change Paris Aligned Select Index</b>															
PABE FP	Amundi MSCI Europe Climate Paris Aligned PAB UCITS ETF DR (C)	•			•							•			LU2182388319
<b>MSCI Europe Climate Change ESG Select Index</b>															
D6RR GY	Deka MSCI Europe Climate Change ESG UCITS ETF EUR	•			•							•			DE000ETFL565
<b>MSCI Europe ESG Leaders Index</b>															
ESGE FP	Lyxor MSCI Europe ESG Leaders DR UCITS ETF	•						•				•			LU1940199711
LFU	ICE US MSCI Europe ESG Leaders Index (USD/NTR)			•		•				•					
<b>MSCI Europe ESG Enhanced Focus Index</b>															
EEUD LN	iShares MSCI Europe ESG Enhanced UCITS ETF	•						•				•			IE00BHZPJ676
EDM6 GY	iShares MSCI Europe ESG Enhanced UCITS ETF EUR (Acc)	•						•				•			IE00BHZPJ783
<b>MSCI Europe ex Controversial Weapons Index</b>															
EEUE FP	BNP Paribas Easy - MSCI Europe ex Controversial Weapons UCITS ETF	•						•				•			LU1291099718
<b>MSCI Europe Small Cap ex Controversial Weapons Index</b>															
EESM FP	BNP Paribas Easy - MSCI Europe Small Caps ex Controversial Weapons UCITS ETF	•						•				•			LU1291099718
<b>MSCI Europe ex UK ex Controversial Weapons Index</b>															
EEXU FP	BNP Paribas Easy - MSCI Europe ex UK ex Controversial Weapons UCITS ETF	•						•				•			LU1291099718
<b>MSCI Europe ESG Screened Index</b>															
SAEU LN	iShares MSCI Europe ESG Screened UCITS ETF	•						•				•			IE00BFNM3D14
SDUE LN	iShares MSCI Europe ESG Screened UCITS ETF	•						•				•			IE00BFNM3F38
<b>MSCI Europe ESG Universal Select Index</b>															
SBIE GR	Amundi MSCI Europe ESG Universal Select DR Cap ETF	•			•							•			LU2109786744
<b>MSCI Europe ESG Universal Select Business Screens Index</b>															
ESGE GY	Invesco MSCI Europe ESG Univ Screened UCITS ETF	•						•				•			IE00BJQRDL90
<b>MSCI Europe ESG Leaders Low Carbon ex Tobacco Involvement 5% Index</b>															
XZEU GR	Xtrackers ESG MSCI Europe UCITS ETF	•						•				•			LU1291099718
<b>MSCI Europe ESG Leaders Select 5% Issuer Capped Index</b>															
SADE GY	Amundi MSCI Europe ESG Leaders Select UCITS DRC ETF	•						•				•			LU2109787478
<b>MSCI EMU Climate Change ESG Select Index</b>															
D6RS GY	Deka MSCI EMU Climate Change ESG UCITS ETF EUR	•						•				•			DE000ETFL557
<b>MSCI EMU ESG Enhanced Focus Index</b>															
EMUD LN	iShares MSCI EMU ESG Enhanced UCITS ETF	•						•				•			IE00BHZPHZ28
LP68539059	iShares MSCI EMU ESG Enhanced UCITS ETF EUR (Acc)	•						•				•			IE00BHZPJ015
<b>MSCI EMU ex Controversial Weapons Index</b>															
EEMU FP	BNP Paribas Easy - MSCI EMU ex Controversial Weapons UCITS ETF	•						•				•			LU1291098827
<b>MSCI EMU Select ESG Rating and Trend Leaders Index</b>															
LESE GR	Lyxor MSCI EMU ESG Trend Leaders UCITS ETF	•						•				•			LU1792117340
<b>MSCI EMU Screened Index</b>															
SAUM LN	iShares MSCI EMU ESG Screened UCITS ETF	•						•				•			IE00BFNM3B99
SMUD LN	iShares MSCI EMU ESG Screened UCITS ETF	•						•				•			IE00BFNM3C07

Ticker/Symbol	Product Name	Product				Index Region					Primary Exchange				ISIN
		ETF	ETN	Futures	Options	Global	Americas	Europe/ Africa	Asia	Pacific	Americas	Europe/ Africa	Asia	Pacific	
<b>MSCI EMU ESG Universal Select Index</b>															
SBIZ GY	Amundi MSCI EMU ESG Universal Select UCITS DRC ETF	•						•					•		LU2109786827
<b>MSCI North America ex Controversial Weapons Index</b>															
ENAM FP	BNP Paribas Easy - MSCI North America EX Controversial Weapons UCITS ETF	•				•							•		LU1291104575
<b>MSCI Emerging Markets ex Controversial Weapons Index</b>															
EEMK FP	BNP Paribas Easy - MSCI Emerging Markets ex Controversial Weapons UCITS ETF	•				•							•		LU1291097779
<b>MSCI Pacific ex-Japan ex-Controversial Weapons Index</b>															
EPEJ FP	BNP Paribas Easy - MSCI Pacific ex Japan ex Controversial Weapons UCITS ETF	•							•				•		LU1291106356
<b>Country Indexes</b>															
<b>MSCI Canada ESG Leaders Index</b>															
ESGA	BMO MSCI Canada ESG Leaders Index ETF	•											•		CA05587Y1051
<b>MSCI Canada IMI Women's Leadership Select Index</b>															
RLDR CN	RBC Vision Women's Leadership MSCI Canada Index ETF	•											•		CA74935J1030
<b>MSCI Canada IMI Extended ESG Focus Index</b>															
XESG CN	iShares ESG Aware MSCI Canada Index ETF	•											•		CA46437H1082
<b>MSCI Canada IMI Choice ESG Screened 10% Issuer Capped Index</b>															
XCSR CN	iShares ESG Advanced MSCI Canada Index ETF	•											•		CA46436U1003
<b>MSCI China ESG Leaders 10/40 Index</b>															
KESG LN	KraneShares MSCI China ESG Leaders UCITS ETF	•											•		IE00BKPT4N29
KESG US	KraneShares MSCI China ESG Leaders Index ETF	•											•		US5007676605
<b>MSCI China IMI Environment 10/40 Index</b>															
KGRN US	KraneShares MSCI China Environment Index ETF	•											•		US5007678502
<b>MSCI China ESG Universal 5% Issuer Capped Index</b>															
CNESH SW	UBS ETF MSCI China ESG Universal UCITS (USD) A-dis	•											•		LU1953188833
<b>MSCI China A Inclusion RMB ESG Universal Index</b>															
501086 CH	Hwabao WP MSCI China A Inclusion RMB ESG Universal Index Fund (LOF)	•												•	
<b>MSCI Germany Climate Change ESG Select Index</b>															
D6RT GY	Deka MSCI Germany Climate Change ESG UCITS ETF EUR	•											•		DE000ETFL540
<b>MSCI Indonesia ESG Leaders Index</b>															
XBES	BNI-AM ETF MSCI ESG Leaders Indonesia	•											•		IDN000423605
<b>MSCI Indonesia ESG Universal Index</b>															
XSMU IJ	Syailendra MSCI Indonesia ESG Universal ETF	•											•		IDN000436805
<b>MSCI Japan ESG Leaders Index</b>															
JSL	ICE US MSCI Japan ESG Leaders (JPY/NTR)			•									•		
<b>MSCI Japan ESG Select Leaders Index</b>															
1653 JP	Daiwa ETF MSCI Japan ESG Select Leaders Index	•											•		JP3048510006
<b>MSCI Japan Empowering Women Index</b>															
1652 JP	Daiwa ETF MSCI Japan Empowering Women Index WIN	•											•		JP3048500007
<b>MSCI Japan ESG Screened Index</b>															
SAJP LN	iShares MSCI Japan ESG Screened UCITS ETF	•											•		IE00BFNM3L97
SDJP SW	iShares MSCI Japan ESG Screened UCITS ETF	•											•		IE00BFNM3M05
FMSJ	ICE US MSCI Japan ESG Screened Index (USD/NTR)			•									•		
<b>MSCI Japan ESG Enhanced Focus Index</b>															
EEJD LN	iShares MSCI Japan ESG Enhanced UCITS ETF	•											•		IE00BHZPJ346
LP68539051	iShares MSCI Japan ESG Enhanced UCITS ETF USD (Acc)	•											•		IE00BHZPJ452
<b>MSCI Japan ex Controversial Weapons Index</b>															
EJAP FP	BNP Paribas Easy - MSCI Japan ex Controversial Weapons UCITS ETF	•											•		LU1291102447
EJAH FP	BNP Paribas Easy - MSCI Japan ex Controversial Weapons UCITS ETF H EUR	•											•		LU1481203070
<b>MSCI Japan ESG Leaders Low Carbon ex Tobacco Involvement 5% Index</b>															
XZMJ GR	Xtrackers ESG MSCI Japan UCITS ETF	•											•		IE00BG36TC12

Ticker/Symbol	Product Name	Product				Index Region					Primary Exchange				ISIN
		ETF	ETN	Futures	Options	Global	Americas	Europe/ Africa	Asia Pacific	Americas	Europe/ Africa	Asia Pacific			
<b>MSCI Mexico ESG Select Focus Index</b>															
ESGMEX MM	iShares ESG MSCI Mexico ETF	•					•			•				MX1BES040009	
<b>MSCI Korea Country ESG Leaders Capped Index</b>															
289260 KS	Mirae Asset TIGER MSCI Korea ESG Leaders ETF	•											•	KR7289260002	
<b>MSCI Korea ESG Universal Index</b>															
289250 KS	Mirae Asset TIGER MSCI Korea ESG Universal ETF	•											•	KR7289250003	
<b>MSCI Korea ESG Universal 30% Issuer Capped Index</b>															
289040 KS	Samsung KODEX MSCI Korea ESG Universal ETF	•											•	KR7289040008	
<b>MSCI Taiwan Select ESG Sustainability High Yield Top 30 Index</b>															
00878 TT	Cathay MSCI Taiwan ESG Sustainability High Dividend Yield ETF	•											•	TW0000087808	
<b>MSCI USA Climate Change ESG Select Index</b>															
D6RQ GY	Deka MSCI USA Climate Change ESG UCITS ETF EUR	•								•				DE000ETFL573	
<b>MSCI USA ESG Leaders Index</b>															
USESG SW	CSIF (IE) MSCI USA ESG Leaders Blue UCITS ETF	•											•	IE00BJBYDP94	
USSG US	Xtrackers MSCI USA ESG Leaders Equity ETF	•											•	US2330511500	
ESGY	BMO MSCI USA ESG Leaders Index ETF	•											•	CA05600C1068	
LFA	ICE US MSCI USA ESG Leaders Index (USD/NTR)			•									•		
<b>MSCI USA Small Cap ESG Leaders Index</b>															
USSMC IM	CSIF (IE) MSCI USA Small Cap ESG Leaders Blue UCITS ETF - B USD	•											•	IE00BMDX0L03	
<b>MSCI USA Extended ESG Leaders Index</b>															
SUSL US	iShares ESG MSCI USA Leaders ETF	•											•	US46435U2188	
<b>MSCI USA ESG Enhanced Focus Index</b>															
EEDS LN	iShares MSCI USA ESG Enhanced UCITS ETF	•											•	IE00BHZPJ890	
LP68539054	iShares MSCI USA ESG Enhanced UCITS ETF USD (Acc)	•											•	IE00BHZPJ908	
<b>MSCI USA Extended ESG Focus Index</b>															
ESGU	iShares ESG Aware MSCI USA Index ETF	•											•		
XSUS CN	iShares ESG MSCI USA Index ETF	•											•	CA46437X1033	
<b>MSCI USA Small Cap Extended ESG Focus Index</b>															
ESML US	iShares ESG Aware MSCI USA Small-Cap ETF	•											•	US46435U6635	
<b>MSCI USA ESG Leaders Low Carbon ex Tobacco Involvement 5% Index</b>															
XZMU GR	Xtrackers ESG MSCI USA UCITS ETF	•											•	IE00BFMNP542	
<b>MSCI USA ESG Leaders Select 5% Issuer Capped Index</b>															
SADU GY	Amundi MSCI USA ESG Leaders Select UCITS DR C ETF	•											•	LU2109787395	
<b>MSCI USA Select ESG Rating and Trend Leaders Index</b>															
LESU GR	Lyxor MSCI USA ESG Trend Leaders UCITS ETF	•											•	LU1792117696	
<b>MSCI USA Extended ESG Select Index</b>															
SUSA US	iShares MSCI USA ESG Select ETF	•											•	US4642888022	
<b>MSCI USA ESG Screened Index</b>															
SASU LN	iShares MSCI USA ESG Screened UCITS ETF	•											•	IE00BFNM3G45	
SDUS LN	iShares MSCI USA ESG Screened UCITS ETF	•											•	IE00BFNM3H51	
FMSU	EUREX MSCI USA ESG Screened Index (USD/NTR)			•									•		
<b>MSCI USA Choice ESG Screened Index</b>															
XUSR CN	iShares ESG Advanced MSCI USA Index ETF	•											•	CA46437Q1081	
USXF US	iShares ESG Advanced MSCI USA ETF	•											•	US46436E7673	
<b>MSCI USA ESG Universal Select Business Screens Index</b>															
ESGU LN	Invesco MSCI USA ESG Universal Screened UCITS ETF	•											•	IE00BJQRDM08	
<b>MSCI USA ESG Universal Select Index</b>															
SBIU GY	Amundi MSCI USA ESG Universal Select UCITS DR C ETF	•											•	LU2109786660	
<b>MSCI USA Climate Change Index</b>															
MUC	ICE US MSCI USA Climate Change Index (USD/NTR)			•									•		
CLUS FP	Lyxor MSCI USA Climate Change UCITS ETF - Acc	•											•	LU2055175025	

Ticker/Symbol	Product Name	Product				Index Region					Primary Exchange				ISIN
		ETF	ETN	Futures	Options	Global	Americas	Europe/ Africa	Asia Pacific	Americas	Europe/ Africa	Asia Pacific			
<b>Bloomberg - Barclays - MSCI Fixed Income ESG Indexes</b>															
<b>Bloomberg Barclays MSCI Global Green Bond Select (USD Hedged) Index</b>															
H34091	iShares Global Green Bond ETF	•				•						•			
<b>Bloomberg Barclays MSCI Global Aggregate SRI Exclusion Float Adjusted Hedged into AUD Index</b>															
	Vanguard Ethically Conscious Global Aggregate Bond Index Hedged ETF	•				•							•	AU0000022501	
<b>Bloomberg Barclays MSCI Euro Corporate Sustainability &amp; SRI (EUR)</b>															
	X-trackers II ESG Eur Corporate Bond Ucits ETF	•						•				•		LU0484968812	
<b>Bloomberg Barclays MSCI Euro Corporate 0-3 yr Sustainability ex Controversial Weapons Index</b>															
SUSE LN	iShares Euro Corporate Bond Sustainability Screened 0-3yr UCITS ETF (SUSE)	•						•				•		IE00BYZTVV78	
<b>Bloomberg Barclays MSCI Euro Area Liquid Corporates Sustainable Index</b>															
	UBS ETF (LU) Bloomberg Barclays MSCI Euro Area Liquid Corporates Sustainable UCITS ETF	•						•				•		LU1484799769	
<b>Bloomberg Barclays MSCI US Liquid Corporates Sustainable Index</b>															
	UBS ETF (LU) Barclays MSCI US Liquid Corporates Sustainable UCITS ETF	•						•				•		LU1215461085	
<b>Bloomberg Barclays MSCI European Green Bond Issuer Capped EUR Index</b>															
	SI UCITS ETF - UC MSCI European Green Bond EUR UCITS ETF	•						•				•		LU1899270539	
<b>Bloomberg Barclays MSCI Euro Corporate SRI Index</b>															
	Amundi Index Euro Agg Corporate SRI – UCITS ETF(dr) ( C )	•						•				•		LU1437018168	
<b>Bloomberg Barclays MSCI US Corporate ESG Focus</b>															
SUSC	iShares ESG Aware USD Corporate Bond ETF	•						•				•		US46435G1931	
<b>Bloomberg Barclays MSCI US Corporate 1-5 Year ESG Focus</b>															
SUSB	iShares ESG Aware 1-5 Year USD Corporate Bond ETF	•						•				•		US46435G2434	
<b>Bloomberg Barclays MSCI US Aggregate ESG Select</b>															
NUBD	Nushares ESG U.S. Aggregate Bond ETF	•						•				•			
<b>Bloomberg Barclays MSCI US Aggregate ESG Focus</b>															
EAGG	iShares ESG Aware U.S. Aggregate Bond ETF	•						•				•			
<b>Bloomberg Barclays MSCI US Corporate SRI Index</b>															
	Amundi Index US Corporate SRI – UCITS ETF(dr)(c)	•						•				•		LU1806495575	
<b>Bloomberg Barclays MSCI US Universal Choice ESG Screened Index.</b>															
EUSB	iShares ESG Advanced Total USD Bond Market ETF	•						•				•		LU1806495575	
<b>Socially Responsible Indexes</b>															
<b>MSCI ACWI SRI 5% Issuer Capped Index</b>															
AWSG LN	UBS MSCI ACWI Socially Responsible USD A-Dis UCITS ETF	•				•						•		IE00BDR55364	
AWSRIA SW	UBS MSCI ACWI Socially Responsible USD A-Dis UCITS ETF	•				•						•		IE00BDR55471	
<b>MSCI ACWI SRI 5% Issuer Capped with Developed Markets 100% hedged to CHF Index</b>															
AWSRIS SW	UBS (Irl) ETF plc - MSCI ACWI Socially Responsible UCITS ETF (hedged to CHF) A-acc	•				•						•		IE00BDR55F85	
AWSRIT SW	UBS (Irl) ETF plc – MSCI ACWI Socially Responsible UCITS ETF (hedged to CHF) A-dis	•				•						•		IE00BDR55D61	
<b>MSCI ACWI SRI 5% Issuer Capped with Developed Markets 100% hedged to EUR Index</b>															
AWSR NA	UBS (Irl) ETF plc – MSCI ACWI Socially Responsible UCITS ETF (hedged to EUR) A-acc	•				•						•		IE00BDR55927	
<b>MSCI ACWI SRI 5% Issuer Capped with Developed Markets 100% hedged to GBP Index</b>															
AWSG LN	UBS (Irl) ETF plc – MSCI ACWI Socially Responsible UCITS ETF (hedged to GBP) A-dis	•				•						•		IE00BDR55B48	
<b>MSCI ACWI SRI 5% Issuer Capped with Developed Markets 100% hedged to USD Index</b>															
AWSRIW SW	UBS (Irl) ETF plc – MSCI ACWI Socially Responsible UCITS ETF (hedged to USD) A-acc	•				•						•		IE00BDR55703	
<b>MSCI World SRI Index</b>															
WSRI FP	Amundi Index MSCI World SRI UCITS ETF DR	•				•						•		LU1861134382	
<b>MSCI World SRI Select Index</b>															
SUSW LN	iShares MSCI World SRI UCITS ETF	•				•						•		IE00BYX2JD69	
SUWS LN	iShares MSCI World SRI UCITS ETF	•				•						•		IE00BDZZTM54	



Ticker/Symbol	Product Name	Product				Index Region				Primary Exchange			ISIN
		ETF	ETN	Futures	Options	Global	Americas	Europe/ Africa	Asia Pacific	Americas	Europe/ Africa	Asia Pacific	
<b>MSCI World SRI 5% Issuer Capped Index</b>													
WSRUS SW	UBS ETF-MSCI World Socially Responsible UCITS ETF	•				•				•			LU0950674332
UIMM GR	UBS ETF-MSCI World Socially Responsible UCITS ETF A-Dis	•				•				•			LU0629459743
4UB9 GY	UBS (Irl) ETF plc – MSCI World Socially Responsible UCITS ETF (USD) A-dis	•				•				•			IE00BK72HH44
WSRIA SW	UBS (Irl) ETF plc – MSCI World Socially Responsible UCITS ETF (USD) A-acc	•				•				•			IE00BK72HJ67
<b>MSCI World SRI 5% Issuer Capped Select 100% hedged to GBP Index</b>													
SRWG LN	UBS (Irl) ETF plc – MSCI World Socially Responsible UCITS ETF (hedged to GBP) A-dis	•				•				•			IE00BK72HN04
<b>MSCI World SRI 5% Issuer Capped Select 100% hedged to EUR Index</b>													
WSRIE SW	UBS ETF (IE) MSCI World Socially Responsible UCITS ETF (hedged to EUR) A-acc	•				•				•			IE00BK72HM96
<b>MSCI World SRI 5% Issuer Capped Select 100% hedged to CHF Index</b>													
WSRIC SW	UBS (Irl) ETF plc – MSCI World Socially Responsible UCITS ETF (hedged to CHF) A-acc	•				•				•			IE00BK72HT65
<b>MSCI Emerging Markets SRI Index</b>													
EMSRI FP	Amundi Index MSCI Emerging Markets SRI UCITS ETF DR	•				•				•			LU1861138961
EMSR FP	BNP Paribas Easy - MSCI Emerging Markets SRI UCITS ETF	•				•				•			LU1291098314
EISR FP	BNP Paribas Easy MSCI Emerging Markets SRI UCITS ETF A-Dis	•				•				•			LU1659681313
SUSM LN	iShares Sustainable MSCI Emerging Markets SRI UCITS ETF	•				•				•			IE00BYVJRP78
SEMD NA	iShares MSCI EM SRI UCITS ETF	•				•				•			IE00BGDQ0T50
<b>MSCI Emerging Markets SRI 5% Issuer Capped Index</b>													
MSDU LN	Amundi Index MSCI Emerging Markets SRI UCITS ETF DR D	•				•				•			LU2059756754
UEF5 GR	UBS ETF – MSCI Emerging Markets Socially Responsible UCITS ETF	•				•				•			LU1048313891
MSRUSA SW	UBS ETF – MSCI Emerging Markets Socially Responsible UCITS ETF	•				•				•			LU1048313974
<b>MSCI Emerging SRI S-Series 5% Capped Index</b>													
EMIS FP	BNP Paribas Easy MSCI Emerging SRI S-Series 5% Capped UCITS ETF - EUR (Cap)	•				•				•			LU1659681230
<b>MSCI EMU SRI 5% Issuer Capped Index</b>													
SRHE GY	Amundi Index MSCI EMU SRI UCITS DR Cap ETF	•				•				•			LU2109787635
EMUSRI SW	UBS ETF – MSCI EMU Socially Responsible UCITS ETF (EUR) A-acc	•				•				•			LU0950674761
UIMR GR	UBS ETF-MSCI EMU Socially Responsible UCITS ETF A -Dis	•							•	•			LU0629460675
<b>MSCI EMU SRI S-Series 5% Capped Index</b>													
MUSRI	BNP Paribas Easy MSCI EMU SRI S-SERIES 5% Capped UCITS ETF - EUR	•							•	•			LU1953137681
<b>MSCI EMU SRI 5% Issuer Capped 100% Hedged to CHF Index</b>													
EUSRS SW	UBS ETF - MSCI EMU Socially Responsible UCITS ETF Hedged	•							•	•			LU1273642816
EUSRT SW	UBS ETF - MSCI EMU Socially Responsible UCITS ETF Hedged	•							•	•			LU1273642907
<b>MSCI EMU SRI 5% Issuer Capped 100% Hedged to USD Index</b>													
EUSRU SW	UBS ETF - MSCI EMU Socially Responsible UCITS ETF Hedged	•							•	•			LU1280300770
<b>MSCI EMU SRI 5% Issuer Capped 100% Hedged to GBP Index</b>													
EUSRL LN	UBS ETF – MSCI EMU Socially Responsible UCITS ETF (hedged to GBP) A-dis	•							•	•			LU1280300853
<b>MSCI EMU SRI Select Reduced Fossil Fuel Index</b>													
SMUA NA	iShares MSCI EMU SRI UCITS ETF - EUR (Acc)	•							•	•			IE00BJLKK341
SMDU NA	iShares MSCI EMU SRI UCITS ETF - EUR (Dist)	•							•	•			IE00BJM0B415
<b>MSCI Europe SRI Index</b>													
IESE LN	iShares MSCI Europe SRI UCITS ETF EUR Acc	•							•	•			IE00B52VJ196
ISED NA	iShares MSCI Europe SRI UCITS ETF	•							•	•			IE00BGDPWW94
SRIE FP	BNP Paribas Easy MSCI Europe SRI	•							•	•			LU1753045415
EUSRI FP	Amundi Index MSCI Europe SRI UCITS ETF DR	•							•	•			LU1861137484

Ticker/Symbol	Product Name	Product				Index Region					Primary Exchange				ISIN
		ETF	ETN	Futures	Options	Global	Americas	Europe/ Africa	Asia Pacific	Americas	Europe/ Africa	Asia Pacific			
<b>MSCI Europe SRI 5% Issuer Capped Index</b>															
ESDG LN	Amundi MSCI Europe SRI UCITS ETF DR D	•						•			•			LU2059756598	
<b>MSCI Europe SRI S-Series 5% Capped Index</b>															
SRIEC FP	BNP Paribas Easy MSCI Europe SRI S-Series 5% Capped UCITS ETF - EUR (Cap)	•						•			•			LU1753045332	
<b>MSCI KLD 400 Social Index</b>															
EKLD FP	BNP Paribas Easy - MSCI KLD 400 Social UCITS ETF	•				•					•			LU1291103338	
EKUS FP	BNP Paribas Easy MSCI KLD 400 US SRI UCITS ETF	•				•					•			LU1659681669	
DSI US	iShares MSCI KLD 400 Social ETF	•					•				•			US4642885705	
<b>MSCI Pacific SRI 5% Issuer Capped Index</b>															
UIMT GR	UBS ETF-MSCI Pacific Socially Responsible UCITS ETF A-Dis	•									•	•		LU0629460832	
<b>Country Indexes</b>															
<b>MSCI Australia IMI Select SRI Screened Index</b>															
GRNV	VanEck Vectors MSCI Australian Sustainable Eq ETF	•									•		•	AU0000050353	
<b>MSCI Japan SRI 5% Issuer Capped Index</b>															
FRCJ GR	UBS ETF - MSCI Japan Socially Responsible UCITS ETF A-Dis	•									•	•		LU1230561679	
JPSRA SW	UBS ETF MSCI Japan Socially Responsible U ETF (JPY) Acc	•									•	•		LU1230563022	
<b>MSCI Japan SRI S-Series 5% Capped Index</b>															
SRIJC FP	BNP Paribas Easy MSCI Japan SRI S-Series 5% Capped UCITS ETF - EUR (Cap)	•									•	•		LU1753045845	
<b>MSCI Japan SRI 100% Hedged to CHF Index</b>															
JPSRT SW	UBS ETF - MSCI Japan Socially Responsible UCITS ETF hedged to CHF A-Dis	•									•	•		LU1273488475	
<b>MSCI Japan SRI 100% Hedged to EUR Index</b>															
SUSJ LN	iShares Sustainable MSCI Japan SRI EUR Hedged UCITS ETF	•									•	•		IE00BYVJRQ85	
<b>MSCI Japan SRI 5% Issuer Capped 100% Hedged to EUR Index</b>															
JPSRE SW	UBS ETF - MSCI Japan Socially Responsible UCITS ETF hedged to EUR A-Acc	•									•	•		LU1273488715	
<b>MSCI Japan SRI 5% Issuer Capped 100% Hedged to USD Index</b>															
JPSRU SW	UBS ETF - MSCI Japan Socially Responsible UCITS ETF hedged to USD A - Acc	•									•	•		LU1273489440	
<b>MSCI Japan SRI Index</b>															
SUJD NA	iShares MSCI Japan SRI UCITS ETF	•									•	•		IE00BGDQ0V72	
SUJP LN	iShares MSCI Japan SRI UCITS ETF USD Acc	•									•	•		IE00BYX8XC17	
SRIJ FP	BNP Paribas Easy Msci Japan SRI	•									•	•		LU1753045928	
<b>MSCI Switzerland IMI Extended SRI 5% Issuer Capped Index</b>															
CHSRI SW	UBS ETF CH - MSCI Switzerland IMI Socially Responsible UCITS ETF A-Dis	•									•	•		CH0368190739	
CHSRIA SW	UBS ETF MSCI Switzerland IMI Socially Responsible (CHF) A-acc	•									•	•		CH0492935355	
<b>MSCI UK IMI Extended SRI 5% Issuer Capped Index</b>															
UKSR LN	UBS Irl ETF plc - MSCI United Kingdom IMI Socially Responsible UCITS ETF A-Dis	•									•	•		IE00BMP3HN93	
<b>MSCI UK IMI Extended SRI 5% Issuer Capped 100% Hedged to CHF Index</b>															
UKSRT SW	UBS Irl ETF plc - MSCI United Kingdom IMI Socially Responsible UCITS ETF Hedged A-Dis	•									•	•		IE00BZ0RTB90	
<b>MSCI UK IMI Extended SRI 5% Issuer Capped 100% Hedged to USD Index</b>															
UKSRU SW	UBS Irl ETF plc - MSCI United Kingdom IMI Socially Responsible UCITS ETF hedged	•									•	•		IE00BYNQMM85	
<b>MSCI UK IMI Extended SRI 5% Issuer Capped 100% Hedged to EUR</b>															
UKSRE SW	UBS Irl ETF plc - MSCI United Kingdom IMI Socially Responsible UCITS ETF	•									•	•		IE00BYNQMK61	
<b>MSCI USA SRI 5% Issuer Capped Index</b>															
USRIH IM	Amundi Index MSCI USA SRI UCITS ETF DR - Hedged EUR (C)	•									•	•		LU2153616599	
UIMP GR	UBS ETF-MSCI USA Socially Responsible UCITS ETF A-Dis	•									•	•		LU0629460089	
USSRI SW	UBS ETF (IE) MSCI USA Socially Responsible UCITS ETF (USD) A-acc	•									•	•		IE00BJXT3C94	
4UBK GY	UBS (Irl) ETF plc – MSCI USA Socially Responsible UCITS ETF (USD) A-dis	•									•	•		IE00BJXT3B87	

Ticker/Symbol	Product Name	Product				Index Region					Primary Exchange				ISIN
		ETF	ETN	Futures	Options	Global	Americas	Europe/ Africa	Asia	Pacific	Americas	Europe/ Africa	Asia	Pacific	
<b>MSCI USA SRI Index</b>															
SRIL NA	iShares MSCI USA SRI UCITS ETF	•						•					•		IE00BZ173T46
3SUR GY	iShares MSCI USA SRI UCITS ETF	•						•					•		IE00BZ173V67
SUAS LN	iShares Sustainable MSCI USA SRI UCITS ETF	•						•					•		IE00BYVJRR92
USRI FP	Amundi Index MSCI USA SRI UCITS ETF DR	•						•					•		LU1861136247
<b>MSCI USA SRI S-Series 5% Capped Index</b>															
EKLDC FP	BNP Paribas Easy MSCI USA SRI S-Series 5% Capped UCITS ETF - EUR (Cap)	•						•					•		LU1659681586
<b>MSCI USA SRI 5% Issuer Capped 100% Hedged to EUR Index</b>															
USSRF IM	UBS ETF - MSCI USA Socially Responsible UCITS ETF Hedged	•						•					•		LU1280303014
USSRIE SW	UBS (Irl) ETF plc – MSCI USA Socially Responsible UCITS ETF (hedged to EUR) A-acc	•						•					•		IE00BJXT3G33
<b>MSCI USA SRI 5% Issuer Capped 100% Hedged to CHF Index</b>															
USSRS SW	UBS ETF - MSCI USA Socially Responsible UCITS ETF Hedged A-Acc	•						•					•		LU1273641503
USSRT SW	UBS ETF - MSCI USA Socially Responsible UCITS ETF Hedged A-Acc	•						•					•		LU1273641503
USSRIC SW	UBS (Irl) ETF plc – MSCI USA Socially Responsible UCITS ETF (hedged to CHF) A-acc	•						•					•		IE00BJXT3L85
<b>MSCI USA SRI 5% Issuer Capped 100% Hedged to GBP Index</b>															
SRUG LN	UBS (Irl) ETF plc – MSCI USA Socially Responsible UCITS ETF (hedged to GBP) A-dis	•						•					•		IE00BJXT3H40

## Real Estate Indexes

### IPD® Direct Property Indexes

#### MSCI UK Quarterly All Industrial Index Futures - Calendar Year Returns

PAIQ	EUREX IPD UK Quarterly All Industrial Index Futures - Calendar Year Returns (GBP)	•						•					•		
------	---	---	--	--	--	--	--	---	--	--	--	--	---	--	--

#### MSCI UK Quarterly All Office Index Futures - Calendar Year Returns

PAOQ	EUREX IPD UK Quarterly All Office Index Futures - Calendar Year Returns (GBP)	•						•					•		
------	---	---	--	--	--	--	--	---	--	--	--	--	---	--	--

#### MSCI UK Quarterly All Property Index Futures - Calendar Year Returns

PUKQ	EUREX IPD UK Quarterly All Property Index Futures - Calendar Year Returns (GBP)	•						•					•		
------	---	---	--	--	--	--	--	---	--	--	--	--	---	--	--

#### MSCI UK Quarterly All Retail Index Futures - Calendar Year Returns

PARQ	EUREX IPD UK Quarterly All Retail Index Futures - Calendar Year Returns (GBP)	•						•					•		
------	---	---	--	--	--	--	--	---	--	--	--	--	---	--	--

#### MSCI UK Quarterly City Office Index Futures Calendar Year Returns

PCOF	EUREX IPD UK Quarterly City Office Index Futures Calendar Year Returns (GBP)	•						•					•		
------	--	---	--	--	--	--	--	---	--	--	--	--	---	--	--

#### MSCI UK Quarterly Retail Warehouse Index Futures Calendar Year Returns

PREW	EUREX IPD UK Quarterly Retail Warehouse Index Futures Calendar Year Returns (GBP)	•						•					•		
------	---	---	--	--	--	--	--	---	--	--	--	--	---	--	--

#### MSCI UK Quarterly Shopping Centre Index Futures Calendar Year Returns

PSOP	EUREX IPD UK Quarterly Shopping Centre Index Futures Calendar Year Returns (GBP)	•						•					•		
------	--	---	--	--	--	--	--	---	--	--	--	--	---	--	--

#### MSCI UK Quarterly South Eastern Industrial Index Futures Calendar Year Returns

PSEI	EUREX IPD UK Quarterly South Eastern Industrial Index Futures Calendar Year Returns (GBP)	•						•					•		
------	---	---	--	--	--	--	--	---	--	--	--	--	---	--	--

#### MSCI UK Quarterly Westend & Midtown Office Index Futures Calendar Year Returns

PWOF	EUREX IPD UK Quarterly Westend & Midtown Office Index Futures Calendar Year Returns (GBP)	•						•					•		
------	---	---	--	--	--	--	--	---	--	--	--	--	---	--	--



## About MSCI Inc.

---

MSCI is a leading provider of critical decision support tools and services for the global investment community. With over 45 years of expertise in research, data and technology, we power better investment decisions by enabling clients to understand and analyze key drivers of risk and return and confidently build more effective portfolios. We create industry-leading research-enhanced solutions that clients use to gain insight into and improve transparency across the investment process.

To learn more, please visit [www.msci.com](http://www.msci.com)

**Americas** 1 888 588 4567  
**EMEA** +44 20 7618 2222  
**Asia Pacific** +852 2844 9333