

# RiskMetrics® Counterparty Credit Risk

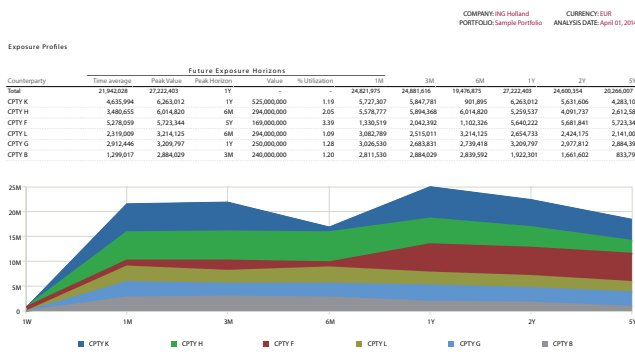
Comprehensive and integrated, MSCI's CCR analytics suite is here to enhance your counterparty credit risk management

## Key benefits and features

Comprehensive range of counterparty credit risk analytics allows clients to:

- Calculate counterparty exposure measures including current exposure, potential future exposure and stressed exposure
- Calculate CVA analytics including unilateral or bilateral CVA and DVA, marginal and incremental CVA, and CVA sensitivities and wrong-way risk
- Measure and assess risk mitigation in incorporating simulation of cash or physical collateral, Netting and collateral agreements
- Understand the contribution of trades to portfolio results and report on risk concentration and utilization

PPE profiles provide a forward looking exposure profile against user-defined time horizons.



An integrated platform for both counterparty and market risk, MSCI's Counterparty Credit Risk (CCR) analytics incorporates common pricing models, market data and risk analytics, to provide users with risk information across a broad range of OTC products. This analytics suite is integrated with our flagship RISKMANAGER solution.

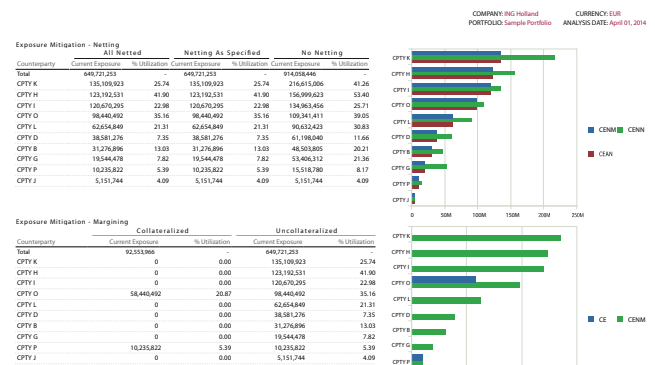
Stress testing capabilities including:

- CCR-related stress testing including spread shocks, interest rate shocks, recovery rate shocks and jump-to-default
- Access to a library of historical stress events and hypothetical scenarios

Integrated market and default probability data to drive CCR analytics.

Regulatory risk reporting for Basel 3.

Risk mitigation summary view helps to show efficiencies realized from netting.



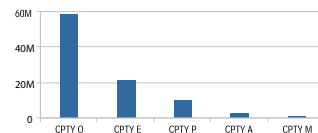
## Enterprise services and solutions

Enterprise services and solutions comprise three core offerings designed to deliver tailored solutions to address your specific challenges

- **Professional services**  
End-to-end services to support operational needs assessment, design and client onboarding
- **Data management**  
Fully automated process managing 70+ million imported positions with 700+ quality checks
- **Operational support**  
Content operations and process management supporting critical business continuity processes

The capital change summary report enables users to analyze their risk-based capital requirements for use in regulatory reporting.

Concentration by Counterparty



## Client service and support

- Support from a highly trained 24x5 client service team working from multiple offices around the world
- Consultants to ensure business continuity, provide expertise and disseminate best practices
- Professionals to ensure the client receives the resources needed to effectively implement and utilize our products

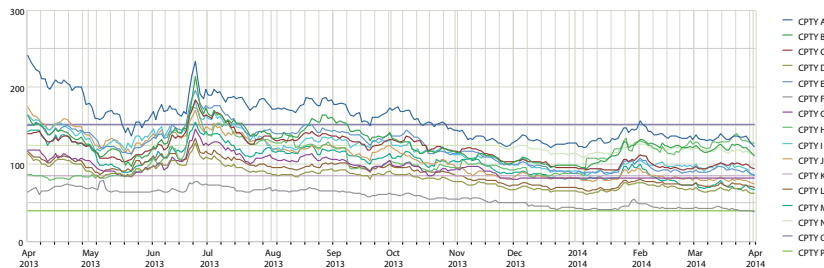
Counterparty	Present Value	# Positions	Notional	CVA	Current Exposure	Limit	% Utilization	% Of Total CE
Total	649,357,926	541	16,640,589,842 (767,876)		92,553,966	-	-	100.00
CPTY O	98,440,492	25	344,848,890 (7,350)		58,440,492,280,000,000		20.87	63.14
CPTY E	1,084,912	1	13,133,915		21,084,912		-	22.78
CPTY P	10,235,822	21	299,653,348 (6,063)		10,235,822,190,000,000		5.39	11.06
CPTY A	2,614,137	2	64,530 (154)		2,614,137 50,000,000		5.23	2.82
CPTY M	178,603	8	87,226,603 (168)		178,603 72,000,000		0.25	0.19
CPTY B	31,276,896	28	1,526,064,260 (52,312)		0 240,000,000		0.00	0.00
CPTY C	(363,328)	11	139,232,426 (5,164)		0 336,000,000		0.00	0.00
CPTY D	38,581,276	73	1,757,756,862 (1,523)		0 525,000,000		0.00	0.00

COMPANY: ING Holland CURRENCY: EUR  
PORTFOLIO: Sample Portfolio ANALYSIS DATE: April 01, 2014

Counterparty monitoring and watch lists can be configured to display market data information alongside risk analytics.

Counterparty Information

Counterparty	Exposure	Equity		CDS spreads		Ratings		Counts		
		Level	Volatility	Level	Volatility	Moody's	Agreements	Netting Set	Parents	Childs
CPTY O	58,440,492	3.8500	38.3414	151.6483	0.0000	Aa3	1	1	0	0
CPTY E	21,084,912	22.5980	30.9028	84.7154	39.3686	Aa3	1	1	0	0
CPTY P	10,235,822	18.4204	2.0289	39.1267	0.0000	Aa3	1	1	0	0



## About MSCI

MSCI is a leading provider of critical decision support tools and services for the global investment community. With over 45 years of expertise in research, data and technology, we power better investment decisions by enabling clients to understand and analyze key drivers of risk and return and confidently build more effective portfolios. We create industry-leading research-enhanced solutions that clients use to gain insight into and improve transparency across the investment process.

To learn more, please visit [www.msci.com](http://www.msci.com).

The information contained herein (the "Information") may not be reproduced or disseminated in whole or in part without prior written permission from MSCI. The Information may not be used to verify or correct other data, to create indexes, risk models, or analytics, or in connection with issuing, offering, sponsoring, managing or marketing any securities, portfolios, financial products or other investment vehicles. Historical data and analysis should not be taken as an indication or guarantee of any future performance, analysis, forecast or prediction. None of the Information or MSCI index or other product or service constitutes an offer to buy or sell, or a promotion or recommendation of, any security, financial instrument or product or trading strategy. Further, none of the Information or any MSCI index is intended to constitute investment advice or a recommendation to make (or refrain from making) any kind of investment decision and may not be relied on as such. The Information is provided "as is" and the user of the Information assumes the entire risk of any use it may make or permit to be made of the Information. NONE OF MSCI INC. OR ANY OF ITS SUBSIDIARIES OR ITS OR THEIR DIRECT OR INDIRECT SUPPLIERS OR ANY THIRD PARTY INVOLVED IN THE MAKING OR COMPILING OF THE INFORMATION (EACH, AN "MSCI PARTY") MAKES ANY WARRANTIES OR REPRESENTATIONS AND, TO THE MAXIMUM EXTENT PERMITTED BY LAW, EACH MSCI PARTY HEREBY EXPRESSLY DISCLAIMS ALL IMPLIED WARRANTIES, INCLUDING WARRANTIES OF MERCHANTABILITY AND FITNESS FOR A PARTICULAR PURPOSE. WITHOUT LIMITING ANY OF THE FOREGOING AND TO THE MAXIMUM EXTENT PERMITTED BY LAW, IN NO EVENT SHALL ANY OF THE MSCI PARTIES HAVE ANY LIABILITY REGARDING ANY OF THE INFORMATION FOR ANY DIRECT, INDIRECT, SPECIAL, PUNITIVE, CONSEQUENTIAL (INCLUDING LOST PROFITS) OR ANY OTHER DAMAGES EVEN IF NOTIFIED OF THE POSSIBILITY OF SUCH DAMAGES. The foregoing shall not exclude or limit any liability that may not by applicable law be excluded or limited.

©2019 MSCI Inc. All rights reserved | CFS0719

