



# MSCI BofA US Dualcast Index

Seek market advantage through  
real-time data

---

**BofA SECURITIES** 



This is an  
interactive brochure

# Real-time insights applied to asset allocation

Financial markets ebb and flow through economic cycles, or regimes. Understanding the behavior of various asset classes during these regimes allows for targeted asset allocation through changing economic cycles.

## An index for any changing economic cycles

The **MSCI BofA US Dualcast Index** (the "Index") applies real-time economic data estimates with an aim to select assets ahead of the curve. With AI technology advancement in analyzing big data, MSCI's data partner QuantCube provides daily US GDP growth and inflation estimates, up to 3 months ahead of official releases. **MSCI collaborated with Bank of America and QuantCube Technology to develop this innovative index.** It is designed to adapt to the current economic regime by allocating to index components that represent 5 asset classes: U.S. equities, U.S. Treasuries, Gold, Industrial Metals, and a currency basket that aims to represent the international value of the U.S. dollar.

## Contents

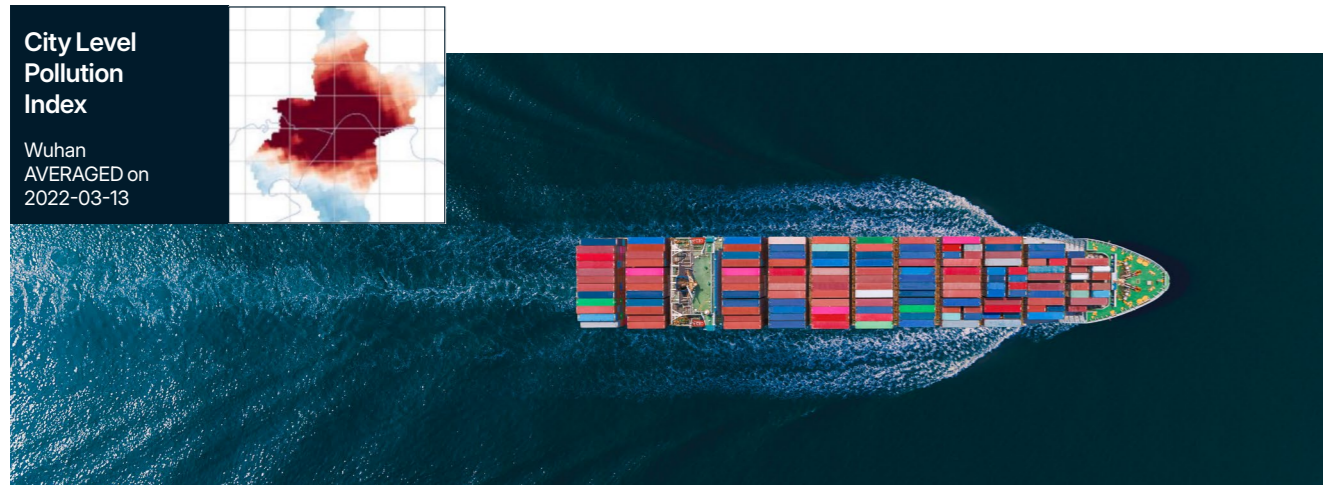


This is an **interactive** page

# The Macro Nowcast provided by QuantCube Technology

Nowcasting, a combination of the terms “now” and “forecasting,” applies big data to enable an estimate of economic indicators in the present. Leveraging AI technology, MSCI’s data partner QuantCube Technology combines and analyzes a diverse range of data sources to provide daily economic growth and inflation estimates, up to three months before their official releases.

QuantCube Technology is a premier alternative data provider to institutional investors.<sup>1</sup> It analyzes billions of data points in real-time through partnerships in satellite imaging, shipping logistics, and flight data to provide leading macroeconomic insights to investors. The QuantCube model is defined by its unique transparency and fundamental approach. This approach enables macroeconomic changes to be traced to specific sources such as commodity exports, port congestion, or manufacturing activity.



Source: QuantCube technology

For US GDP growth, QuantCube aggregates data that could significantly impact economic growth. For example, NO2 pollution levels are used to estimate manufacturing activity within a region or city; shipping data provides proxies for international trade; and real-time job openings facilitate the monitoring of unemployment trends.

Regarding US inflation, the model compiles real-time prices tracking each subcomponent of the Consumer Price Index (CPI) that could drive inflation trends. For example, the food and energy subcomponents are estimated using gas station and grocery store prices, and the core services subcomponent is monitored using real-time prices for rents, medical services, and insurance.



<sup>1</sup> Relevant awards include Energy Risk Award by Risk.net for 2023 Data and Analytics Firm of the Year; Best Data Science Solution by A-Team Data Management Insight Award 2022; Best Alternative Data Provider to the Buy Side by Waters Technology Buy-Side Technology Awards 2022. See [quant-cube.com](https://quant-cube.com) for additional details. the Buy Side by Waters Technology Buy-Side Technology Awards 2022. See [quant-cube.com](https://quant-cube.com) for additional details.

# Allocation based on four economic regimes

The MSCI BofA US Dualcast Index allocates based on four economic regimes which are identified using a GDP Growth Indicator and an Inflation Indicator.

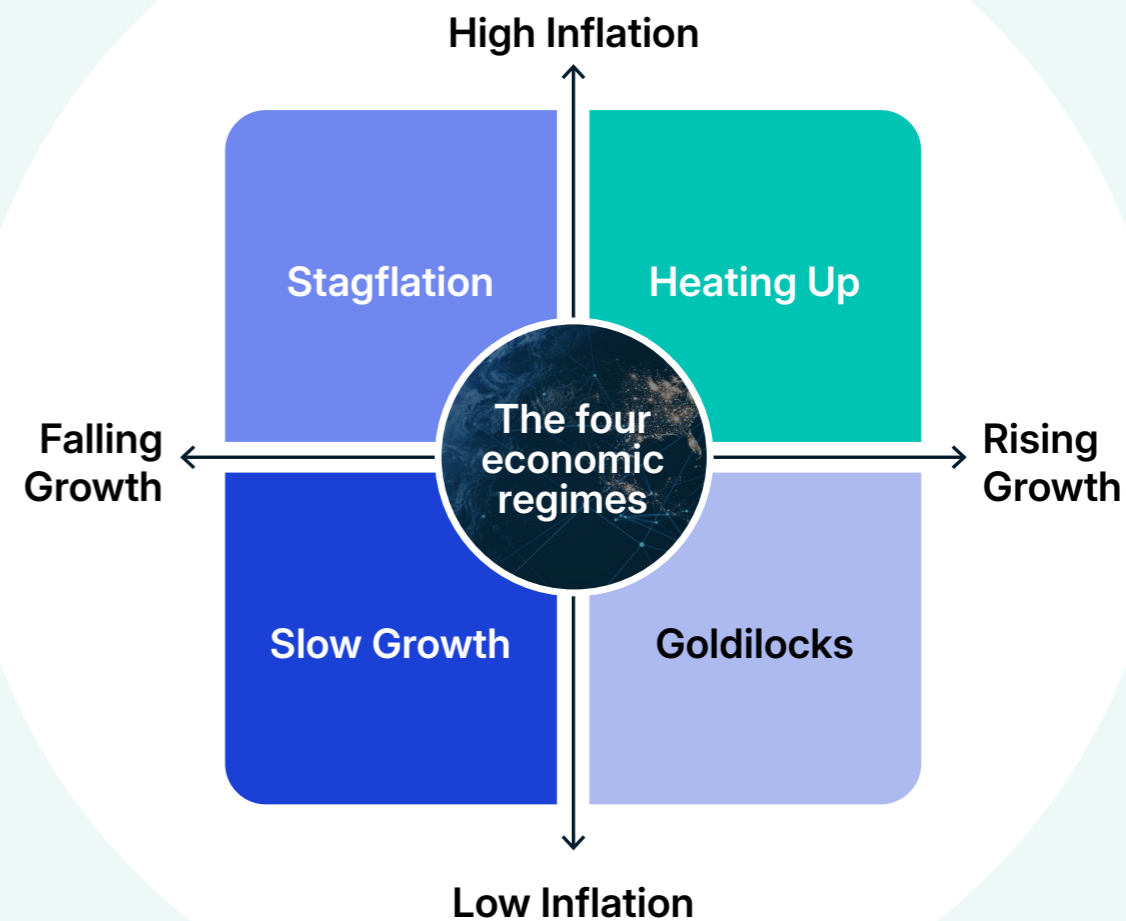
The GDP Growth Indicator leverages the daily US GDP growth nowcast provided by QuantCube Technology with the goal of identifying whether the economy is growing, slowing, or falling. The Inflation Indicator leverages the daily inflation nowcast with the goal of identifying whether inflation is relatively high or low.

The Index seeks to capitalize on its dynamic exposure across diversified asset classes, including U.S. equities, U.S. Treasuries, commodities and US dollar based currency pairs. For each regime, the Index is designed to overweight the assets that historically provided the best risk-adjusted returns.<sup>2</sup>

## The four economic regimes

The Index defines four economic regimes labelled as Stagflation, Heating Up, Slow Growth and Goldilocks based on whether the GDP Growth Indicator is rising or falling, and whether the Inflation Indicator is high or low.<sup>3</sup>

- Goldilocks** – Rising GDP Growth Indicator and Low Inflation Indicator
- Slow Growth** – Falling GDP Growth Indicator and Low Inflation Indicator
- Stagflation** – Falling GDP Growth Indicator and High Inflation Indicator
- Heating Up** – Rising GDP Growth Indicator and High Inflation Indicator



<sup>2</sup> Because this Index applies a volatility control mechanism, the range of both positive and negative performance of the Index is limited.

<sup>3</sup> Index Performance in changing economic environment, MSCI research April 2014

# Index Construction<sup>4</sup>

Each day, the Index systematically assesses the current economic regime to determine asset weighting. If the regime stays constant, the Index rebalances monthly.

## Allocate to up to 5 components

Asset Class	Components
Equity	– MSCI USA: large- and mid-cap U.S. equities
Treasuries	– Dynamic basket of 2yr, 5yr and 10yr rolling U.S. treasury rolling futures indexes
Currencies	– US Dollar based currency rolling futures index basket
Commodities	– Gold rolling futures index – Industrial metal rolling futures index



Step 1:  
**Identify economic regime**

- QuantCube looks at alternative data sources with the goal of mapping in real-time how an economy evolves.
- Each day, the model outputs a current estimate of U.S. GDP and U.S. inflation.
- These nowcast numbers are used to identify which one of four regimes the economy is currently in.
- The index rebalances monthly. Each day, the index assesses the current economic regime. If the regime changes, the index rebalances asset weighting.



1



Step 2:  
**Allocate to “optimal” asset mix**

- After identifying the current regime, the Index matches the current regime to the same regime from different time periods starting in 2000. This historical data is used to determine index weight allocation across asset classes with the goal of maximizing risk-adjusted returns.
- As the Index accumulates live history, more and more live observations are added to the algorithm. New time periods are more heavily weighted to account for market shifts.



2



Step 3:  
**Target 8% Volatility**

- The Index targets 8% annualized volatility by rebalancing between the components and cash daily.
- When the index realized volatility is below the target, the Index can systematically apply leverage, up to 250%, with the goal of capturing gains.
- When the index realized volatility is above the target, the Index can systematically allocate to cash, up to 100%, with the goal of mitigating drawdowns.

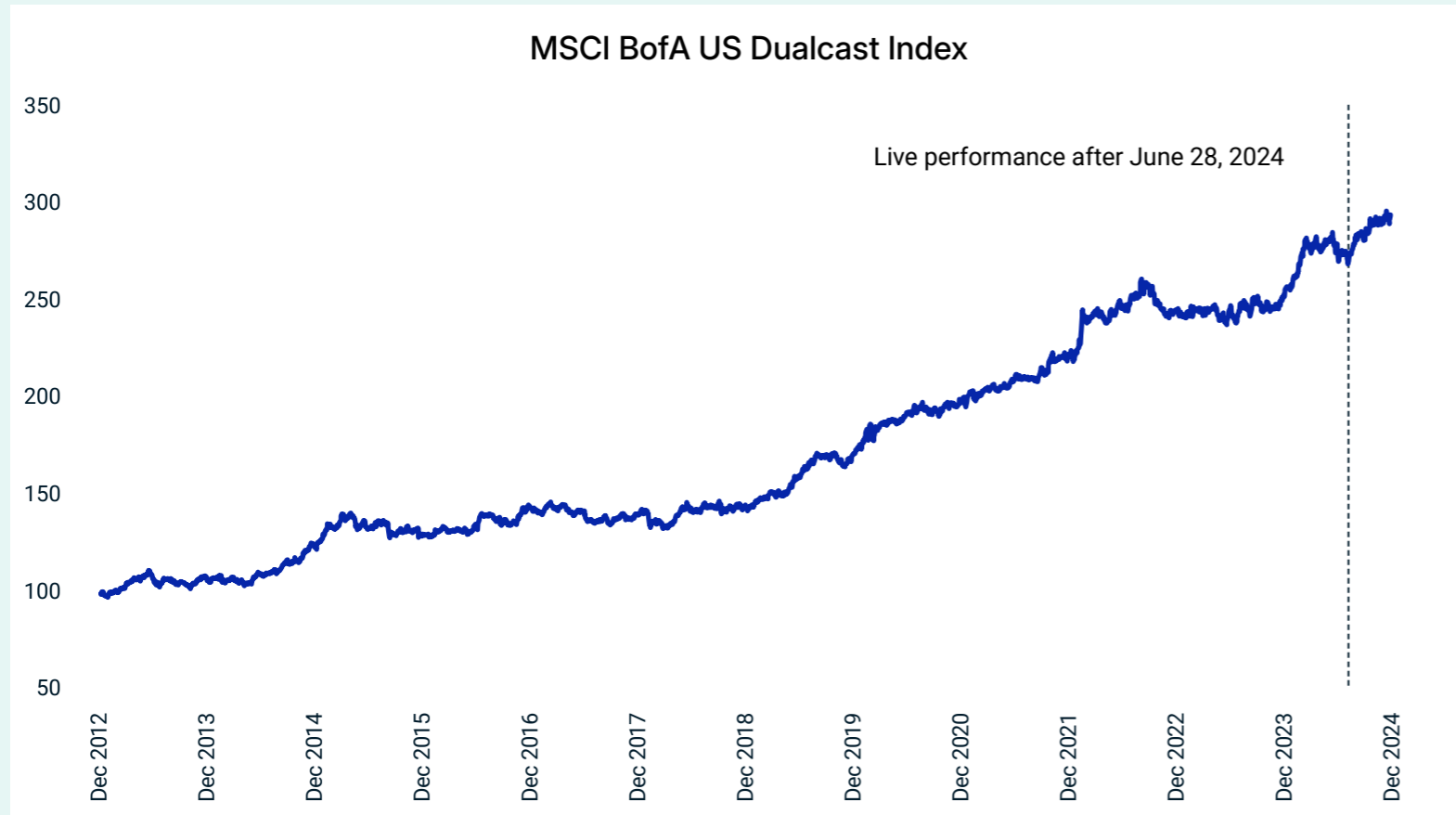


3

<sup>4</sup> The index is an excess return index, cash allocation is not interest bearing. The performance of the Index includes a 50bps p. a. embedded cost, as well as turnover and financing costs, and does not include fees or costs of any financial instrument referencing the Index. Because this Index applies a volatility control mechanism, the range of both positive and negative performance of the Index is limited.

# Performance

## Back-tested and actual performance chart



## Back-tested and actual annual returns

Year	MSCI BofA US Dualcast Index
2024	17.76%
2023	1.94%
2022	9.19%
2021	12.69%
2020	16.92%
2019	16.29%
2018	2.76%
2017	-1.38%
2016	9.19%
2015	2.68%
2014	17.27%
2013	8.71%

Source: MSCI. Data from 12/3/2012 to 12/31/24. The Index was created on June 28, 2024. Levels for the Index before June 28, 2024, represent hypothetical data determined by retroactive application of a back-tested model, itself designed with the benefit of hindsight. Past performance - whether actual, backtested or simulated - is not indicative of future performance. Actual performance will vary, perhaps materially, from the performance set forth herein. The Index performance represents excess return. The performance of the Index includes a 50bps embedded cost and does not include fees or costs of any financial instrument referencing the Index. Because this Index applies a volatility control mechanism, the range of both positive and negative performance of the Index is limited.



## About MSCI

MSCI is a leading provider of critical decision support tools and services for the global investment community. With over 50 years of expertise in research, data and technology, we power better investment decisions by enabling clients to understand and analyze key drivers of risk and return and confidently build more effective portfolios. We create industry-leading research-enhanced solutions that clients use to gain insight into and improve transparency across the investment process.

To learn more, please visit [www.msci.com](http://www.msci.com)

## Notice & Disclaimer

This document and all of the information contained in it, including without limitation all text, data, graphs, charts (collectively, the "Information") is the property of MSCI Inc. or its subsidiaries (collectively, "MSCI"), or MSCI's licensors, direct or indirect suppliers or any third party involved in making or compiling any Information (collectively, with MSCI, the "Information Providers") and is provided for informational purposes only. The Information may not be modified, reverse-engineered, reproduced or disseminated in whole or in part without prior written permission from MSCI. All rights in the Information are reserved by MSCI and/or its Information Providers.

The Information may not be used to create derivative works or to verify or correct other data or information. For example (but without limitation), the Information may not be used to create indexes, databases, risk models, analytics, software, or in connection with the issuing, offering, sponsoring, managing or marketing of any securities, portfolios, financial products or other investment vehicles utilizing or based on, linked to, tracking or otherwise derived from the Information or any other MSCI data, information, products or services.

The user of the Information assumes the entire risk of any use it may make or permit to be made of the Information. NONE OF THE INFORMATION PROVIDERS MAKES ANY EXPRESS OR IMPLIED WARRANTIES OR REPRESENTATIONS WITH RESPECT TO THE INFORMATION (OR THE RESULTS TO BE OBTAINED BY THE USE THEREOF), AND TO THE MAXIMUM EXTENT PERMITTED BY APPLICABLE LAW, EACH INFORMATION PROVIDER EXPRESSLY DISCLAIMS ALL IMPLIED WARRANTIES (INCLUDING, WITHOUT LIMITATION, ANY IMPLIED WARRANTIES OF ORIGINALITY, ACCURACY, TIMELINESS, NON-INFRINGEMENT, COMPLETENESS, MERCHANTABILITY AND FITNESS FOR A PARTICULAR PURPOSE) WITH RESPECT TO ANY OF THE INFORMATION.

Without limiting any of the foregoing and to the maximum extent permitted by applicable law, in no event shall any Information Provider have any liability regarding any of the Information for any direct, indirect, special, punitive, consequential (including lost profits) or any other damages even if notified of the possibility of such damages. The foregoing shall not exclude or limit any liability that may not be applicable law be excluded or limited, including without limitation (as applicable), any liability for death or personal injury to the extent that such injury results from the negligence or willful default of itself, its servants, agents or sub-contractors.

Information containing any historical information, data or analysis should not be taken as an indication or guarantee of any future performance, analysis, forecast or prediction. Past performance does not guarantee future results.

The Information may include "Signals," defined as quantitative attributes or the product of methods or formulas that describe or are derived from calculations using historical data. Neither these Signals nor any description of historical data are intended to provide investment advice or a recommendation to make (or refrain from making) any investment decision or asset allocation and should not be relied upon as such. Signals are inherently backward-looking because of their use of historical data, and they are not intended to predict the future. The relevance, correlations and accuracy of Signals frequently will change materially.

The Information should not be relied on and is not a substitute for the skill, judgment and experience of the user, its management, employees, advisors and/or clients when making investment and other business decisions. All Information is impersonal and not tailored to the needs of any person, entity or group of persons.

None of the Information constitutes an offer to sell (or a solicitation of an offer to buy), any security, financial product or other investment vehicle or any trading strategy.

It is not possible to invest directly in an index. Exposure to an asset class or trading strategy or other category represented by an index is only available through third party investable instruments (if any) based on that index. MSCI does not issue, sponsor, endorse, market, offer, review or otherwise express any opinion regarding any fund, ETF, derivative or other security, investment, financial product or trading strategy that is based on, linked to or seeks to provide an investment return related to the performance of any MSCI index (collectively, "Index Linked Investments"). MSCI makes no assurance that any Index Linked Investments will accurately track index performance or provide positive investment returns. MSCI Inc. is not an investment adviser or fiduciary and MSCI makes no representation regarding the advisability of investing in any Index Linked Investments.

Index returns do not represent the results of actual trading of investible assets/securities. MSCI maintains and calculates indexes, but does not manage actual assets. The calculation of indexes and index returns may deviate from the stated methodology. Index returns do not reflect payment of any sales charges or fees an investor may pay to purchase the securities underlying the index or Index Linked Investments. The imposition of these fees and charges would cause the performance of an Index Linked Investment to be different than the MSCI index performance.

The Information may contain back tested data. Back-tested performance is not actual performance, but is hypothetical. There are frequently material differences between back tested performance results and actual results subsequently achieved by any investment strategy.

Constituents of MSCI equity indexes are listed companies, which are included in or excluded from the indexes according to the application of the relevant index methodologies. Accordingly, constituents in MSCI equity indexes may include MSCI Inc., clients of MSCI or suppliers to MSCI. Inclusion of a security within an MSCI index is not a recommendation by MSCI to buy, sell, or hold such security, nor is it considered to be investment advice.

Data and information produced by various affiliates of MSCI Inc., including MSCI ESG Research LLC and Barra LLC, may be used in calculating certain MSCI indexes. More information can be found in the relevant index methodologies on [www.msci.com](http://www.msci.com).

MSCI receives compensation in connection with licensing its indexes to third parties. MSCI Inc.'s revenue includes fees based on assets in Index Linked Investments. Information can be found in MSCI Inc.'s company filings on the Investor Relations section of [msci.com](http://msci.com).

MSCI ESG Research LLC is a Registered Investment Adviser under the Investment Advisers Act of 1940 and a subsidiary of MSCI Inc. Neither MSCI nor any of its products or services recommends, endorses, approves or otherwise expresses any opinion regarding any issuer, securities, financial products or instruments or trading strategies and MSCI's products or services are not a recommendation to make (or refrain from making) any kind of investment decision and may not be relied on as such, provided that applicable products or services from MSCI ESG Research may constitute investment advice. MSCI ESG Research materials, including materials utilized in any MSCI ESG Indexes or other products, have not been submitted to, nor received approval from, the United States Securities and Exchange Commission or any other regulatory body. MSCI ESG and climate ratings, research and data are produced by MSCI ESG Research LLC, a subsidiary of MSCI Inc. MSCI ESG Indexes, Analytics and Real Estate are products of MSCI Inc. that utilize information from MSCI ESG Research LLC. MSCI Indexes are administered by MSCI Limited (UK).

Please note that the issuers mentioned in MSCI ESG Research materials sometimes have commercial relationships with MSCI ESG Research and/or MSCI Inc. (collectively, "MSCI") and that these relationships create potential conflicts of interest. In some cases, the issuers or their affiliates purchase research or other products or services from one or more MSCI affiliates. In other cases, MSCI ESG Research rates financial products such as mutual funds or ETFs that are managed by MSCI's clients or their affiliates, or are based on MSCI Inc. Indexes. In addition, constituents in MSCI Inc. equity indexes include companies that subscribe to MSCI products or services. In some cases, MSCI clients pay fees based in whole or part on the assets they manage. MSCI ESG Research has taken a number of steps to mitigate potential conflicts of interest and safeguard the integrity and independence of its research and ratings. More information about these conflict mitigation measures is available in our Form ADV, available at <https://adviserinfo.sec.gov/firm/summary/169222>.

Any use of or access to products, services or information of MSCI requires a license from MSCI. MSCI, Barra, RiskMetrics, IPD and other MSCI brands and product names are the trademarks, service marks, or registered trademarks of MSCI or its subsidiaries in the United States and other jurisdictions. The Global Industry Classification Standard (GICS) was developed by and is the exclusive property of MSCI and S&P Global Market Intelligence. "Global Industry Classification Standard (GICS)" is a service mark of MSCI and S&P Global Market Intelligence.

MIFID2/MIFIR notice: MSCI ESG Research LLC does not distribute or act as an intermediary for financial instruments or structured deposits, nor does it deal on its own account, provide execution services for others or manage client accounts. No MSCI ESG Research product or service supports, promotes or is intended to support or promote any such activity. MSCI ESG Research is an independent provider of ESG data.

Privacy notice: For information about how MSCI collects and uses personal data, please refer to our Privacy Notice at <https://www.msci.com/privacy-pledge>.

The MSCI Indices are calculated and administered by COMPASS FINANCIAL TECHNOLOGIES SA. COMPASS

FINANCIAL TECHNOLOGIES SA uses its best efforts to ensure that the MSCI Indices are calculated correctly. COMPASS FINANCIAL TECHNOLOGIES SA has no obligation to point out errors in the MSCI Indices to third parties including without limitation to investors and/or financial intermediaries. The calculation, the administration, the publication and the dissemination of the MSCI Indices by COMPASS FINANCIAL TECHNOLOGIES SA does not constitute a recommendation by COMPASS FINANCIAL TECHNOLOGIES SA to invest capital in any financial products using the MSCI Indices nor does it in any way represent an assurance or opinion of COMPASS FINANCIAL TECHNOLOGIES SA with regard to any investment therein. Purchasers of a financial product are aware, and accept, that index calculations are based on large quantities of data provided by third parties and are thus susceptible to errors, interruptions and delays. This may result in errors, interruptions and delays in the Index(es) which may have impact on any financial product.

## About Bank of America

Bank of America is one of the world's leading financial institutions, serving individual consumers, small and middle-market businesses and large corporations with a full range of banking, investing, asset management and other financial and risk management products and services. The company provides unmatched convenience in the United States, serving approximately 69 million consumer and small business clients with approximately 3,800 retail financial centers, approximately 15,000 ATMs (automated teller machines) and award-winning digital banking with approximately 57 million verified digital users. Bank of America is a global leader in wealth management, corporate and investment banking and trading across a broad range of asset classes, serving corporations, governments, institutions and individuals around the world. Bank of America offers industry-leading support to approximately 4 million small business households through a suite of innovative, easy-to-use online products and services. The company serves clients through operations across the United States, its territories and more than 35 countries. Bank of America Corporation stock is listed on the New York Stock Exchange (NYSE: BAC).

## BofA Securities Disclaimer

The BofA methodology for applied bond allocation (the "BofA Methodology") and the name "BofAS" and trademarks "BofAS", and "BofA" (collectively, the "BofAS Trademarks") are the intellectual property of BofA Securities, Inc. and its affiliates ("BofAS"). The BofA Methodology has been licensed to MSCI Inc. ("MSCI") by BofAS on an "AS IS" basis for inclusion in certain index(es) identified hereunder for which MSCI is the owner (the "Index(es)"). BofAS is not the "administrator" of the Licensee Indices for the purposes of Regulation (EU) 2016/1011 of the European Parliament and the Council of 8 June 2016 on indices used as benchmarks in financial instruments and financial contracts or to measure the performance of investment funds) in the European Union (the "EU Benchmarks Regulations") or the Benchmarks (Amendment and Transitional Provision) (EU Exit) Regulations 2019 which transposed the EU Benchmark Regulation into UK Law (the "UK Benchmarks Regulations") (collectively, the "Benchmarks Regulations"). BofAS was not and is not involved in any way in the calculation, maintenance or review of the Index(es). BOFAS DOES NOT MAKE, AND HEREBY SPECIFICALLY DISCLAIMS, ANY REPRESENTATIONS, ENDORSEMENTS, GUARANTEES, OR WARRANTIES, EXPRESS OR IMPLIED, INCLUDING, WITHOUT LIMITATION, ANY OF MERCHANTABILITY OR FITNESS FOR A PARTICULAR PURPOSE OF THE BOFAS METHODOLOGY, BOFAS TRADEMARKS OR THE INDEX(ES) (INCLUDING WITHOUT LIMITATION, THEIR QUALITY, ACCURACY, SUITABILITY AND/OR COMPLETENESS), AND AS TO RESULTS TO BE OBTAINED BY MSCI, ISSUERS OR OWNERS OF ANY FINANCIAL PRODUCT REFERENCING ANY OF THE INDEX(ES), OR ANY OTHER PERSON OR ENTITY. BOFAS FURTHER DISCLAIMS ANY REPRESENTATIONS RELATING TO TITLE OR NON-INFRINGEMENT OF INTELLECTUAL PROPERTY RIGHTS WITH RESPECT TO ANY OF THE INDEX(ES). ANY RELATED INFORMATION, THE BOFAS TRADEMARKS, OR ANY FINANCIAL PRODUCT REFERENCING ANY OF THE INDEX(ES). PROSPECTIVE INVESTORS ACKNOWLEDGE THAT THEY ARE RESPONSIBLE FOR DETERMINING THE NATURE, POTENTIAL VALUE, AND SUITABILITY FOR ITSELF OF ANY PARTICULAR SECURITY, TRANSACTION, INVESTMENT STRATEGY OR FINANCIAL PRODUCT REFERENCING ANY OF THE INDEX(ES) AND THAT BOFAS DOES NOT GIVE SUCH ADVICE OR RECOMMENDATIONS. Without limiting the foregoing, in no event shall BofAS have any liability for any direct, indirect, special, incidental, punitive, consequential (including, without limitation, lost profits) or any other damages in connection with the BofA Methodology, the BofAS Trademarks or the Index(es). BofAS (or its affiliates) may be engaging in services or transactions for its other clients or for its own proprietary accounts which could affect the value of the constituents underlying an Index and thereby the calculated values of the Index(es).

©2025 MSCI Inc. All rights reserved

