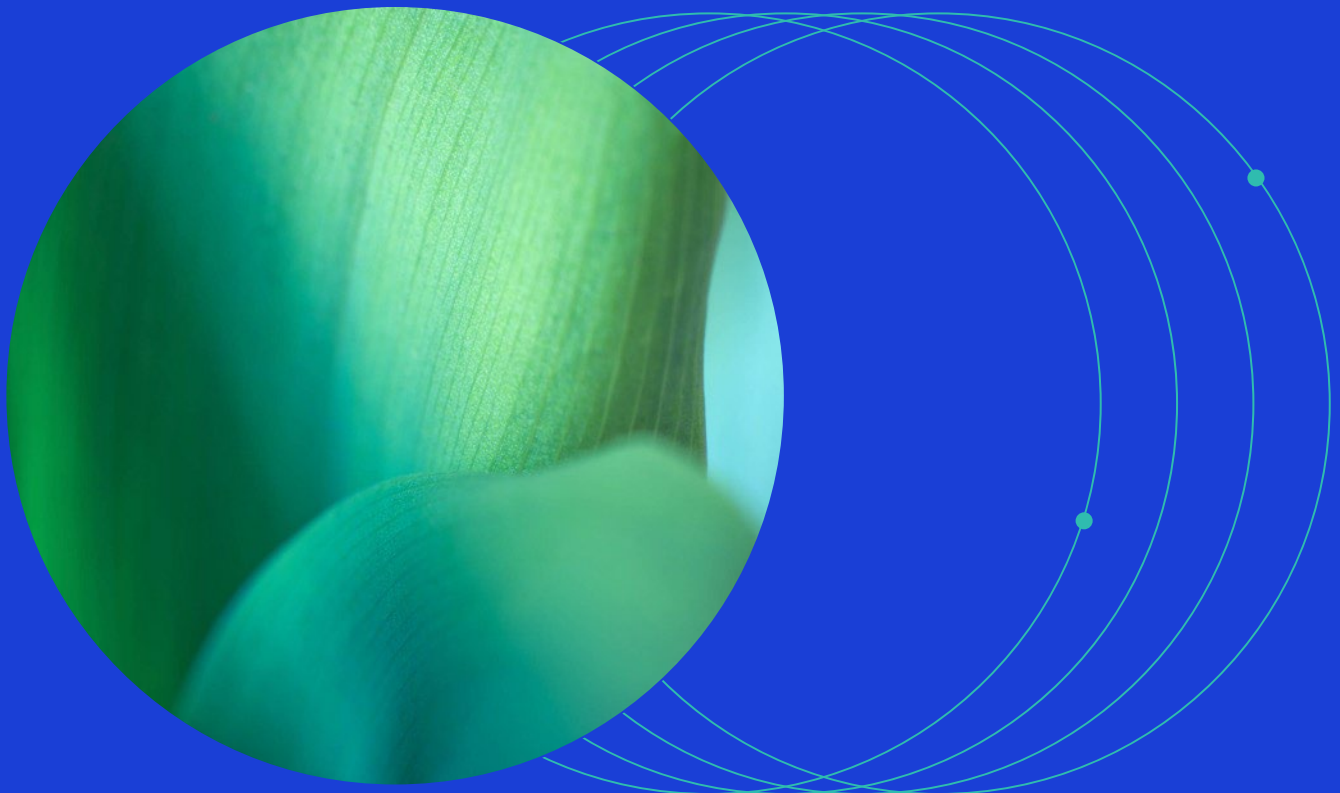




December 2025

MSCI Fixed Income Index Calculation Methodology



Contents

1	Introduction.....	3
2	MSCI Fixed Income Indexes	4
3	MSCI Fixed Income Index Return Calculation Methodology	5
4	MSCI Index Level Datapoints	10
	Appendix: Transaction cost adjustment on Index Returns.....	13
	Appendix: Credit Rating Scale	14
	Appendix: Treatment for Negative Accrued Interest	15
	Appendix: Treatment of Missing Data and Usage of Alternate Sources.....	15
	Appendix: Glossary of Terms.....	16
	Changes to this Document.....	17

1 Introduction

This methodology book describes MSCI's general Index calculation methodology for the MSCI Fixed Income Indexes.

These policies and guidelines affect all securities across the MSCI Fixed Income Indexes and products. Unless otherwise stated the policies and guidelines apply therefore to all securities in the MSCI Fixed Income universe.

Please note that the index construction methodology, input data specification and other guiding principles for MSCI Fixed Income Indexes can be found at www.msci.com.

2 MSCI Fixed Income Indexes

MSCI Fixed Income Indexes measure the performance of a set of fixed income securities over time. They are calculated using the Laspeyres' concept of a weighted arithmetic average together with the concept of chain-linking.

MSCI calculates its fixed income indexes in "local" currency as well as in USD. Index levels are also available in several other currencies such as EUR, GBP etc. While the local currency series of indexes cannot be replicated in the real world, it represents the theoretical performance of an index without any impact from foreign exchange fluctuations i.e., a continuously hedged portfolio.

MSCI Fixed Income Indexes are calculated 5 days a week, from Monday to Friday. However, the index levels may not change on days that are noted as holidays as per the MSCI Fixed Income Data methodology¹.

MSCI also reviews its fixed income indexes on an ongoing basis to account for the following:

- If an index constituent is no longer priced (intra-rebalancing) by the pricing source or the price is unavailable, the last available price is used.
- MSCI, at times, may use a price different from the last available price provided, including 0.00 in the case of a default or missed interest payment. MSCI will employ procedures as noted in the MSCI Fixed Income Data Methodology document relevant to pricing.

Please see Appendix 5.4 for detailed policy around handling of missing data and use of alternate data sources.

Announcements with relevant information pertaining to MSCI Fixed Income Indexes will be made at 6 p.m. EST and calculated Index levels will be distributed at end of each business day at 7 p.m. EST

¹ MSCI Fixed Income Data Methodology on <https://www.msci.com/index-methodology>

3 MSCI Fixed Income Index Return Calculation Methodology

The total return index measures the change in market value of a Fixed Income portfolio over a given period relative to a starting base date value. This includes, return from fixed income security price² movements, exchange rate fluctuations, coupon income earned as well as P&L generated from redemption of principal.

3.1 Market value of a Fixed Income Security

Market Value of a security is defined as the product of its notional amount outstanding and dirty price. Dirty price of the security is calculated by adding its clean bid price and accrued interest³. Therefore, market value of the security accounts for daily changes in price and interest accrued from the fixed income security.

$$DP_{t,j} = P_{t,j} + A_{t,j} \text{ --- (1)}$$

$$MV_{t,j} = \frac{DP_{t,j} * N_{s,j} * K_{t,j}}{100} \text{ --- (2)}$$

Where:

$P_{t,j}$ - Clean Bid Price of the security j at the close of day t

$A_{t,j}$ - Accrued Interest of the security j at the close of day t⁴

$DP_{t,j}$ - Dirty Price of the security j at the close of day t

$N_{s,j}$ - Amount Outstanding of the security j at the close of the previous index rebalancing day s

$MV_{t,j}$ - Market Value of the security j at the close of day t

$K_{t,j}$ - Security Inclusion Factor of the security j at the close of day t

3.2 Market value and Cash Calculations

In the MSCI Fixed Income Indexes, constituent securities accrue cash balance from regular interest payments and principal redemptions in between two index reviews. The accrued cash is reinvested across the index on the Rebalancing Date.

Therefore, we define market value with cash as follows.

² In the document term price refers to price of the fixed income security, unless explicitly stated otherwise. Please refer to MSCI Fixed Income Data Methodology for detailed specification on input data points.

³ Please refer to MSCI Fixed Income Glossary for definition of the technical terms used in the document.

⁴ Please refer to Appendix – Section 5.3 of the document for details in adjustment to accrued interest in the ex-coupon period.

$$MVC_{t,j} = MV_{t,j} + CCB_{t,j} \text{ --- (3)}$$

Where:

$MVC_{t,j}$ - Market Value with Cash of the security j at the close of day t

$CCB_{t,j}$ - Total cumulative cash balance of the security j at the close of day t

Total cumulative cash balance of the security is a summation of cash flow accrued from interest payments and principal redemptions between last Rebalancing date and the return calculation date (t).

$$CCB_{t,j} = CCB_{t-1,j} + \text{Cash from Coupon}_{t,j} \text{ --- (4)}$$

Where:

$CCB_{t,j}$ - Total cumulative cash balance of the security j accrued since last rebalancing at the close of t

In case of a redemption or coupon payment event for a bond, cash from coupon and cash from redemption are calculated using the formulae defined below.

$$\text{Cash from Coupon}_{t,j} = \frac{\text{CouponPaid}_{j,t}}{100} * N_{s,j} * K_{t,j}^5 \text{ --- (5)}$$

Where:

CouponPaid_j - Coupon payment of the bond j at the close of day t

3.3 Security Level Total Return Calculation

MSCI calculates daily security level total return to account for changes in –

- Market Price
- Accrued Interest
- Cash generated from coupon payments.
- Exchange Rate

Daily security level total return between t-1 and t is calculated using the following formula.

$$SLTR_{t-1,t,j}^{USD} = \left(\frac{\text{Adjusted } MVC_{t,j}}{\text{Initial } MVC_{t,j}} - 1 \right) \text{ --- (6)}$$

⁵ Please refer to Appendix – Section 5.3 for details on calculation of cash from coupon for bonds with a provision for ex-coupon period.

$$\text{Initial } MVC_{t,j} = MVC_{t-1,j} * FX_{t-1,j} \text{ --- (7)}$$

$$\text{Adjusted } MVC_{t,j} = MVC_{t,j} * FX_{t,j} \text{ --- (8)}$$

Where:

$FX_{t,j}$ – Foreign exchange rate applicable for security j at the close of day t

$\text{Initial } MVC_{t,j}$ – Market value inclusive of cash with which security j is included in the opening index portfolio for return calculation on day t

$\text{Adjusted } MVC_{t,j}$ – Market value inclusive of cash for security j adjusted for changes in price, interest and / or principal on day t

Note that $\text{Adjusted } MVC_{t,j}$ calculation shown above pertains to return calculation in base currency which is USD. In case of return calculation in "local" currency, the following formula is employed.

$$SLTR_{t-1,t,j}^{local} = \left(\frac{MVC_{t,j} * FX_{t-1,j}}{\text{Initial } MVC_{t,j}} - 1 \right) \text{ --- (9)}$$

MSCI decomposes security level total return calculation into the following components for attribution purposes.

3.4 Security Level Price Return

Price return of the security in local currency is calculated using the following formula-

$$SLPR_{t-1,t,j}^{local} = \frac{P_{t,j}}{P_{t-1,j}} - 1 \text{ --- (10)}$$

Where:

$P_{t,j}$ – Clean Bid Price of the security j at the close of day t

3.5 Security Level Income Return

Income Return of the security in local currency represents part of total return that is earned via regular interest payments as well as interest accrued over time in between interest payment dates.

$$SLIR_{t-1,t,j}^{local} = \frac{1 + SLTR_{t-1,t,j}^{local}}{1 + SLPR_{t-1,t,j}^{local}} - 1 \text{ --- (11)}$$

3.6 Currency

Fixed Income securities denominated in foreign currency will be impacted by the movement of exchange rate between foreign and local currency. MSCI captures return from exchange rate movements using the following formula.

$$FXR_{t-1,t,j} = \frac{FX_{t,j}}{FX_{t-1,j}} - 1 \quad \text{--- (12)}$$

Accounting for FX movements, local total and price returns can be converted into total and price returns of various currencies (e.g., USD, EUR, GBP etc.) using the following formulae –

$$SLTR_{t-1,t,j}^{USD} = (1 + SLTR_{t-1,t,j}^{local}) * (1 + FXR_{t-1,t,j}) - 1 \quad \text{--- (13)}$$

$$SLPR_{t-1,t,j}^{USD} = (1 + SLPR_{t-1,t,j}^{local}) * (1 + FXR_{t-1,t,j}) - 1 \quad \text{--- (14)}$$

3.7 Index Level Total Return Calculation

Index level total return can be calculated using the formula below –

$$Index\ TR_{t-1,t}^{USD} = \sum_{j=1}^n SLTR_{t-1,t,j}^{USD} * opening\ wt_{t,j}^{MVC} \quad \text{--- (15)}$$

$$Index\ TR_{t-1,t}^{local} = \sum_{j=1}^n SLTR_{t-1,t,j}^{local} * opening\ wt_{t,j}^{MVC} \quad \text{--- (16)}$$

Where:

opening $wt_{t,j}^{MVC}$ – Opening weight of security j in the index including market value and cash on day t

$$opening\ wt_{t,j}^{MVC} = \frac{Initial\ MVC_{t,j}}{\sum_{j=1}^n Initial\ MVC_{t,j}}$$

3.8 Index Level Total Return Attribution

Security level attribution outlined earlier in Section 2.3 is extended to the index level by aggregating security level price and income returns using the weighted average method. Daily Index level total return is attributed into the following two parts –

- Daily Index Level Price Return (Index PR)

⁶ Note that on the effective date of index rebalancing, certain variants of the index total return are adjusted to account for transaction costs. Details on transaction cost adjustment to the total return variant is outlined in the Appendix – Section 5.1.

- Daily Index Level Income Return (Index IR)

They are calculated as shown in the formulae below –

$$\text{Index } PR_{t-1,t}^{USD} = \sum_{j=1}^n SLPR_{t-1,t,j}^{USD} * \text{opening } wt_{t,j}^{MVC} \text{ --- (17)}$$

$$\text{Index } PR_{t-1,t}^{local} = \sum_{j=1}^n SLPR_{t-1,t,j}^{local} * \text{opening } wt_{t,j}^{MVC} \text{ --- (18)}$$

$$\text{Index } IR_{t-1,t}^{USD} = \frac{1 + \text{Index } TR_{t-1,t}^{USD}}{1 + \text{Index } PR_{t-1,t}^{USD}} - 1 \text{ --- (19)}$$

$$\text{Index } IR_{t-1,t}^{local} = \frac{1 + \text{Index } TR_{t-1,t}^{local}}{1 + \text{Index } PR_{t-1,t}^{local}} - 1 \text{ --- (20)}$$

3.9 Calculation of Index Levels

Generally, MSCI will calculate and publish three variants of the index levels. They will start with the base value (example: 1000) and will be calculated by chain-linking of appropriate daily index returns. Formulae shown below are example of chain-linking daily index returns in USD between period t-s and t to calculate index levels in USD. A similar approach is used on daily index returns in local currency to calculate index levels in local currency.

$$TRI_t^{USD} = TRI_{t-s}^{USD} * \left[\prod_{t-s < u \leq t} [1 + \text{Index } TR_{u-1,u}^{USD}] \right] \text{ --- (21)}$$

$$PRI_t^{USD} = PRI_{t-s}^{USD} * \left[\prod_{t-s < u \leq t} [1 + \text{Index } PR_{u-1,u}^{USD}] \right] \text{ --- (22)}$$

$$IRI_t^{USD} = IRI_{t-s}^{USD} * \left[\prod_{t-s < u \leq t} [1 + \text{Index } IR_{u-1,u}^{USD}] \right] \text{ --- (23)}$$

Where:

TRI_t^{USD} – Total Return Index Level in USD at the close of day t

PRI_t^{USD} – Price Return Index Level in USD at the close of day t

IRI_t^{USD} – Income Return Index Level in USD at the close of day t

4 MSCI Index Level Datapoints

MSCI calculates aggregated index level data points for MSCI Fixed Income Indexes using weighted average methodology, as shown in the formulae enlisted below.

Index Average Clean Price

$$AP_t = \sum_{j=1}^n P_{t,j} * w_{t,j}^N \text{ --- (24)}$$

Index Average Dirty Price

$$ADP_t = \sum_{j=1}^n DP_{t,j} * w_{t,j}^N \text{ --- (25)}$$

Index Average Coupon

$$AC_t = \sum_{j=1}^n Coupon_j * w_{t,j}^N \text{ --- (26)}$$

Index Average Notional

$$AN_t = \frac{\sum_{j=1}^n N_{t,j} * K_{t,j}}{n} \text{ --- (27)}$$

Index Average Time to Maturity

$$TM_t = \sum_{j=1}^n TM_{t,j} * w_{t,j}^N \text{ --- (28)}$$

$$\text{Where, } TM_{t,j} = \frac{\text{Number of days between Maturity Date and } t}{365}$$

Index Average Modified Duration

$$AD_t^{MOD} = \sum_{j=1}^n D_{t,j}^{MOD} * w_{t,j}^{MVC} \text{ --- (29)}$$

Index Average Effective duration

$$AD_t^{EFF} = \sum_{j=1}^n D_{t,j}^{EFF} * w_{t,j}^{MVC} \text{ --- (30)}$$

Index Average Convexity

$$AX_t = \sum_{j=1}^n X_t * w_{t,j}^{MVC} \text{ --- (31)}$$

Index Average Effective Convexity

$$AEX_t = \sum_{j=1}^n EX_t * w_{t,j}^{MVC} \text{ --- (32)}$$

Index Average Yield to Maturity

$$AY_t = \sum_{j=1}^n Y_{t,j} * w_{t,j}^{MVC} \text{ --- (33)}$$

Index Average Yield to Worst

$$AYW_t = \sum_{j=1}^n YW_{t,j} * w_{t,j}^{MVC} \text{ --- (34)}$$

Index Average OAS

$$OAS_t = \sum_{j=1}^n OAS_{t,j} * w_{t,j}^{DMV} \text{ --- (35)}$$

Index Average Credit Rating

$$ART_t = \sum_{j=1}^n RT_{t,j} * w_{t,j}^{MVC} \text{ --- (36)}$$

MSCI converts credit ratings in letter from Fitch, Moody's and S&P by assigning each security with a credit score using the table presented in the Appendix. Using the numerical scores, final credit rating score of the security is calculated as shown below.

$$\textit{Where, } RT_{t,j} = \max(RT_{t,j}^{\textit{Moody's}}, RT_{t,j}^{\textit{S\&P}})$$

Index level aggregated numerical credit rating score is rounded to the nearest integer and converted back to a MSCI credit rating as presented in the table in the Appendix.

Weight calculation formulae, employed in evaluation of these index level metrics are enlisted below

-

Market Value Weight with Cash

- $$W_{t,j}^{MVC} = \frac{MV_{t,j} * FX_{t,j}}{\sum_{j=1}^n (MV_{t,j} + CCB_{t,j}) * FX_{t,j}}$$

Nominal Weight

- $$W_{t,j}^N = \frac{N_{t,j} * K_{t,j}}{\sum_{j=1}^n N_{t,j} * K_{t,j}}$$

Effective Duration Adjusted Weight

- $$W_{t,j}^{DMV} = \frac{MV_{t,j} * FX_{t,j} * D_{t,j}^{EFF}}{\sum_{j=1}^n D_{t,j}^{EFF} * (MV_{t,j} + CCB_{t,j}) * FX_{t,j}}$$

Appendix I: Transaction cost adjustment on Index Returns

On the effective date of index rebalancing ($t = s$), certain variants of the total index return are adjusted to account for transaction costs. The return adjustment for transaction costs reflects the fact that in replicating portfolio rebalancing, new index additions and securities where weight has increased are traded at the ask price, whereas index deletions and securities where weight has decreased are traded at the bid price. The formulae mentioned below calculates the impact of the bid-ask spread on the index total return.

$$Cost_{t=s} = \sum_{\substack{j = \text{all bonds with increase in} \\ \text{wt including} \\ \text{new index additions}}} \frac{P_{ask,t-1,j} - P_{bid,t-1,j}}{P_{bid,t-1,j} + A_{t-1,j}} * (\text{opening } wt_{j,t}^{mv} - \text{closing } wt_{j,t-1}^{mv}) \dots (37)$$

Where:

$P_{t-1,j}^{ask}$ – Closing ask price of security j on one business day before the effective day of rebalancing

$P_{t-1,j}^{bid}$ – Closing bid price of security j on one business day before the effective day of rebalancing

$$\text{opening } wt_{j,t}^{mv} = \frac{\text{Initial } MV_{t,j}}{\sum_{j=1}^n \text{Initial } MV_{t,j}}$$

$$\text{closing } wt_{j,t-1}^{mv} = \frac{\text{Adjusted } MV_{t-1,j}}{\sum_{j=1}^n \text{Adjusted } MV_{t-1,j}}$$

$$\text{Initial } MV_{t,j} = \frac{DP_{t-1,j} * N_{t-1,j} * FX_{t-1,j} * K_{t,j}}{100}$$

$$\text{Adjusted } MV_{t,j} = \frac{DP_{t,j} * N_{t,j} * FX_{t,j} * K_{t,j}}{100}$$

Therefore, index total return (Index TR) on the effective date of rebalancing is adjusted as follows.

$$Index TR_{t=s}^{TC} = Index TR_{t=s} - Cost_{t=s}$$

Where:

$Index TR_s^{TC}$ - Index total return adjusted for transaction cost on the effective date of rebalancing.

Appendix II: Credit Rating Scale

Moody's	S&P	Fitch	Score	MSCI
Aaa	AAA	AAA	0	AAA
Aa1	AA+	AA+	1	AA+
Aa2	AA	AA	2	AA
Aa3	AA-	AA-	3	AA-
A1	A+	A+	4	A+
A2	A	A	5	A
A3	A-	A-	6	A-
Baa1	BBB+	BBB+	7	BBB+
Baa2	BBB	BBB	8	BBB
Baa3	BBB-	BBB-	9	BBB-
Ba1	BB+	BB+	10	BB+
Ba2	BB	BB	11	BB
Ba3	BB-	BB-	12	BB-
B1	B+	B+	13	B+
B2	B	B	14	B
B3	B-	B-	15	B-
Caa1	CCC+	CCC+	16	CCC+
Caa2	CCC	CCC	17	CCC
Caa3	CCC-	CCC-	18	CCC-
Ca	CC	CC	20	CC
C	C	C	23	C
D ⁷	D	D	25	D

⁷ Average ratings methodology applies to defaulted assets too, and default events are reported individually in corporate action.

Appendix III: Treatment for Negative Accrued Interest

Accrued Interest is almost always expected to be positive, but bonds with a provision for ex-coupon period can have negative accrued interest.

If a bond is purchased in the ex-coupon period, the buyer is not entitled to the upcoming coupon payment. The buyer of such a bond thus incurs a loss of interest income for remainder of the ex-coupon period. This aspect is reflected accurately by negative accrued interest during that period.

Total return calculation framework for the MSCI Fixed Income Indexes accounts for this by adjusting security calculation in the ex-coupon period based on when it was added to the index.

If a security was added to the index in the ex-coupon period, then it does not receive coupon payment on the next coupon date (i.e., Cash from Coupon = 0). On the other hand, if a security is already a part of the index portfolio when it enters the ex-coupon period, then accrued interest for the security is adjusted for calculation purposes as shown below.

$$A_{t,j}^{ex-coupon} = A_{t,j} + \frac{CouponPaid_{j,t}}{100}$$

Appendix IV: Treatment of Missing Data and Usage of Alternate Sources

For index maintenance purposes, MSCI often uses data received from multiple sources. Such data may need to be taken on specific and defined dates ('Data Date') as is relevant to a specific index methodology. In certain instances, due to an extraordinary event or exceptional technical issue, data needed as of a Data Date may not be available as expected. In such cases, unless otherwise specified in the relevant index methodology, MSCI will use the most recent data available prior to the Data Date. MSCI will release a public announcement to inform clients about the occurrence of any event where this methodological directive is enacted.

Additionally, MSCI independently monitors the quality of data from its data sources on an ongoing basis. MSCI may under exceptional circumstances elect to use data from alternative sources if MSCI determines that the primary source data is not reflective of market conditions. In such circumstances, and if deemed material, MSCI will release a public announcement to inform clients about the change. All such determinations are made by the Fixed Income & Multi-Asset Class Index Committee (FIMAC IC). If appropriate, MSCI may conduct a consultation with the investment community to gather feedback on the most relevant alternate source.

Appendix V: Glossary of Terms

Glossary of Terms in the order of their appearance

P – Clean Bid Price of a security

A - Accrued Interest of a security

DP - Dirty Price of a security

N - Amount Outstanding of a security

K – Security Inclusion Factor of a security

MV – Market Value of a security

MVC – Market Value with Cash of a security

CCB - Total cumulative cash balance of a security

CouponPaid – Actual coupon paid for a security on the coupon payment date

FX – Foreign exchange rate

Initial MVC – Market value inclusive of cash a security in the opening index portfolio

Adjusted MVC - Market value inclusive of cash for a security adjusted for changes in price, interest and / or principal

SLTR – Security level Total Return

SLPR – Security level Price Return

SLIR – Security level Income Return

FXR – FX Return

Index TR – Index Total Return

Index PR – Index Price Return

Index IR – *Index Income Return*

TRI – Total Return Index Level

PRI – Price Return Index Level

IRI – Income Return Index Level

Appendix VI: Changes to this Document

The following sections have been modified since August 2020:

Section MSCI Fixed Income Indexes: Referenced the MSCI Fixed Income Data methodology for details on holiday treatment.

The following sections have been modified since April 2022:

Section 1.3.1 – Security Level Price Return
 Section 1.3.2 – Security Level Income Return
 Section 1.4.1 – Index Level Total Return Attribution
 Added Section 4.5 – Glossary of Terms

The following sections have been modified since December 2023:

Section 6.2 – Credit rating scale expanded to include all credit ratings till Default

The following sections have been modified since July 2024:

Section 3 – Modified to reflect fixing of amount outstanding as per last rebalance date of the index.
 Section 4 – Removed

The following sections have been modified since December 2025:

Updated to latest template

Contact Us

About MSCI

MSCI is a leading provider of critical decision support tools and services for the global investment community. With over 50 years of expertise in research, data and technology, we power better investment decisions by enabling clients to understand and analyze key drivers of risk and return and confidently build more effective portfolios. We create industry-leading research-enhanced solutions that clients use to gain insight into and improve transparency across the investment process.

To learn more, please visit www.msci.com.
msci.com/contact-us

The process for submitting a formal index complaint can be found on the index regulation page of MSCI's website at: <https://www.msci.com/index-regulation>.

AMERICA

United States	+ 1 888 588 4567 *
Canada	+ 1 416 687 6270
Brazil	+ 55 11 4040 7830
Mexico	+ 52 81 1253 4020

EUROPE, MIDDLE EAST & AFRICA

South Africa	+ 27 21 673 0103
Germany	+ 49 69 133 859 00
Switzerland	+ 41 22 817 9777
United Kingdom	+ 44 20 7618 2222
Italy	+ 39 02 5849 0415
France	+ 33 17 6769 810

EUROPE, MIDDLE EAST & AFRICA

China	+ 86 21 61326611
Hong Kong	+ 852 2844 9333
India	+ 91 22 6784 9160
Malaysia	1800818185 *
South Korea	+ 82 70 4769 4231
Singapore	+ 65 67011177
Australia	+ 612 9033 9333
Taiwan	008 0112 7513 *
Thailand	0018 0015 6207 7181 *
Japan	+ 81 3 4579 0333

* toll-free

Notice and Disclaimer

The data, data feeds, databases, reports, text, graphs, charts, images, videos, recordings, models, metrics, analytics, indexes, ratings, scores, cases, estimates, assessments, software, websites, products, services and other information and materials contained herein or delivered in connection with this notice (collectively, the "Information") are copyrighted, trade secrets (when not publicly available), trademarks and proprietary property of MSCI Inc. or its subsidiaries (collectively, "MSCI"), MSCI's licensors, direct or indirect suppliers and authorized sources, and/or any third party contributing to the Information (collectively, with MSCI, the "Information Providers"). All rights in the Information are reserved by MSCI and its Information Providers and user(s) shall not, nor assist others to, challenge or assert any rights in the Information.

Unless you contact MSCI and receive its prior written permission, you must NOT use the Information, directly or indirectly, in whole or in part (i) for commercial purposes, (ii) in a manner that competes with MSCI or impacts its ability to commercialize the Information or its services, (iii) to provide a service to a third party, (iv) to permit a third party to directly or indirectly access, use or resell the Information, (v) to redistribute or resell the Information in any form, (vi) to include the Information in any materials for public dissemination such as fund factsheets, market presentations, prospectuses, and investor information documents (e.g. KIDs or KIDS), (vii) to create or as a component of any financial products, whether listed or traded over the counter or on a private placement basis or otherwise, (viii) to create any indexes, ratings or other data products, including in derivative works combined with other indexes or data or as a policy, product or performance benchmarks for active, passive or other financial products, (ix) to populate a database, or (x) to train, use as an input to, or otherwise in connection with any artificial intelligence, machine learning, large language models or similar technologies except as licensed and expressly authorized under MSCI's AI Contracting Supplement at <https://www.msci.com/legal/supplemental-terms-for-client-use-of-artificial-intelligence>.

The intellectual property rights of MSCI and its Information Providers may not be misappropriated or used in a competitive manner through the use of third-party data or financial products linked to the Information, including by using an MSCI index-linked future or option in a competing third-party index to provide an exposure to the underlying MSCI index or by using an MSCI index-linked ETF to create a financial product that provides an exposure to the underlying MSCI index without obtaining a license from MSCI.

The user or recipient of the Information assumes the entire risk of any use it may make, permit or cause to be made of the Information. NONE OF THE INFORMATION PROVIDERS MAKES ANY EXPRESS OR IMPLIED WARRANTIES OR REPRESENTATIONS WITH RESPECT TO THE INFORMATION (OR THE RESULTS TO BE OBTAINED BY THE USE THEREOF), AND TO THE MAXIMUM EXTENT PERMITTED BY APPLICABLE LAW, EACH INFORMATION PROVIDER EXPRESSLY DISCLAIMS ALL IMPLIED WARRANTIES (INCLUDING ANY IMPLIED WARRANTIES OF ORIGINALITY, ACCURACY, TIMELINESS, SUITABILITY, NON-INFRINGEMENT, COMPLETENESS, MERCHANTABILITY AND FITNESS FOR A PARTICULAR PURPOSE) WITH RESPECT TO ANY OF THE INFORMATION. Without limiting any of the foregoing and to the maximum extent permitted by applicable law, in no event shall MSCI or any other Information Provider have any liability arising out of or relating to any of the Information, including for any direct, indirect, special, punitive, consequential (including lost profits) or any other damages, even if notified of the possibility of such damages. The foregoing shall not exclude or limit any liability that may not be applicable law be excluded or limited.

The Information, including index construction, ratings, historical data, or analysis, is not a prediction or guarantee of future performance, and must not be relied upon as such. Past performance is not indicative of future results. The Information may contain back tested data. Back-tested performance based on back-tested data is not actual performance but is hypothetical. There are frequently material differences between back tested performance results and actual results subsequently achieved by any investment strategy. The Information may include "Signals," defined as quantitative attributes or the product of methods or formulas that describe or are derived from calculations using historical data. Signals are inherently backward-looking because of their use of historical data, and they are inherently inaccurate, not intended to predict the future and must not be relied upon as such. The relevance, correlations and accuracy of Signals frequently change materially over time.

The Information may include data relating to indicative prices, evaluated pricing or other information based on estimates or evaluations (collectively, "Evaluations") that are not current and do not reflect real-time traded prices. No evaluation method, including those used by the Information Providers, may consistently generate evaluations or estimates that correspond to actual "traded" prices of any relevant securities or other assets. Evaluations are subject to change at any time without notice and without any duty to update or inform you, may not reflect prices at which actual transactions or collateral calls may occur or have occurred. The market price of securities, financial instruments, and other assets can be determined only if and when executed in the market. There may be no, or may not have been any, secondary trading market for the relevant securities, financial instruments or other assets. Private capital, equity, credit and other assets and their prices may be assessed infrequently, may not be priced on a secondary market, and shall not be relied upon as an explicit or implicit valuation of a particular instrument. Any reliance on fair value estimates and non-market inputs introduces potential biases and subjectivity. Internal Rate of Return metrics are not fully representative without full disclosure of fund cash flows, assumptions, and time horizons.

The Information does not constitute, and must not be relied upon as, investment advice, credit ratings, or proxy advisory or voting services. None of the Information Providers, their products or services, are fiduciaries or make any recommendation, endorsement, or approval of any investment decision or asset allocation. Likewise, the Information does not represent an offer to sell, a solicitation to buy, or an endorsement of any security, financial product, instrument, investment vehicle, or trading strategy, whether or not linked to or in any way based on any MSCI index, rating, subcomponent, or other Information (collectively, "Linked Investments"). The Information should not be relied on and is not a substitute for the skill, judgment and experience of any user when making investment and other business decisions. MSCI is not responsible for any user's compliance with applicable laws and regulations. All Information is impersonal, not tailored to the needs of any person, entity or group of persons, not objectively verifiable in every respect, and may not be based on information that is important to any user.

It is not possible to invest in an index. Exposure to an asset class or trading strategy or other category represented by an index is only available through third party investable instruments (if any) based on that index. MSCI makes no assurance that any Linked Investments will accurately track index performance or provide positive investment returns. Index returns do not represent results of actual trading of investible assets/securities. MSCI maintains and calculates indexes but does not manage assets. The calculation of indexes and index returns may deviate from the stated methodology. Index returns do not reflect payment of any sales charges or fees an investor may pay to purchase securities underlying the index or Linked Investments. The imposition of these fees and charges would cause the performance of a Linked Investment to be different than the MSCI index performance.

Information provided by MSCI Solutions LLC and certain related entities ("MSCI Solutions"), including materials utilized in MSCI sustainability and climate products, have not been submitted to, nor received approval from any regulatory body. MSCI sustainability and climate offerings, research and data are produced by, and ratings are solely the opinion of MSCI Solutions. MSCI India Domestic ESG Ratings are produced by MSCI ESG Ratings and Research Private Limited and offered domestically in India. Other MSCI products and services may utilize information from MSCI Solutions, Barra LLC or other affiliates. More information can be found in the relevant methodologies on www.msci.com. MSCI Indexes are administered by MSCI Limited (UK) and MSCI Deutschland GmbH. No regulated use of any MSCI private real assets indexes in any jurisdiction is permitted without MSCI's express written authorization. The process for applying for MSCI's express written authorization can be found at: <https://www.msci.com/index-regulation>.

MSCI receives compensation in connection with licensing its indexes and other Information to third parties. MSCI Inc.'s revenue includes fees based on assets in Linked Investments. Information can be found in MSCI Inc.'s company filings on the Investor Relations section of msci.com. Issuers mentioned in MSCI Solutions materials or their affiliates may purchase research or other products or services from one or more MSCI affiliates, manage financial products such as mutual funds or ETFs rated by MSCI Solutions or its affiliates or are based on MSCI Indexes. Constituents of MSCI equity indexes are listed companies, which are included in or excluded from the indexes according to the application of the relevant index methodologies. Constituents in MSCI Inc. equity indexes may include MSCI Inc., clients of MSCI or suppliers to MSCI. MSCI Solutions has taken steps to mitigate potential conflicts of interest and safeguard the integrity and independence of its research and ratings.

MIFID2/MIFIR notice: MSCI Solutions does not distribute or act as an intermediary for financial instruments or structured deposits, nor does it deal on its own account, provide execution services for others or manage client accounts. No MSCI product or service supports, promotes or is intended to support or promote any such activity. MSCI Solutions is an independent provider of sustainability and climate data. All use of indicative prices for carbon credits must comply with any rules specified by MSCI. All transactions in carbon credits must be traded "over-the-counter" (i.e. not on a regulated market, trading venue or platform that performs a similar function to a trading venue) and result in physical delivery of the carbon credits.

You may not remove, alter, or obscure any attribution to MSCI or notices or disclaimers that apply to the Information. MSCI, Barra, RiskMetrics, and other MSCI brands and product names are the trademarks, service marks, or registered trademarks of MSCI or its subsidiaries in the United States and other jurisdictions. The Global Industry Classification Standard (GICS) was developed by and is the exclusive property of MSCI and S&P Dow Jones Indices. "Global Industry Classification Standard (GICS)" is a service mark of MSCI and S&P Dow Jones Indices. Terms such as including, includes, for example, such as and similar terms used herein are without limitation.

MSCI and its Information Providers may use automated technologies and artificial intelligence to help generate content and output incorporated in the Information.

Privacy notice: For information about how MSCI collects and uses personal data, please refer to our Privacy Notice at: <https://www.msci.com/privacy-pledge>. For copyright infringement claims contact us at dmca@msci.com. This notice is governed by the laws of the State of New York without regard to conflict of laws principles.