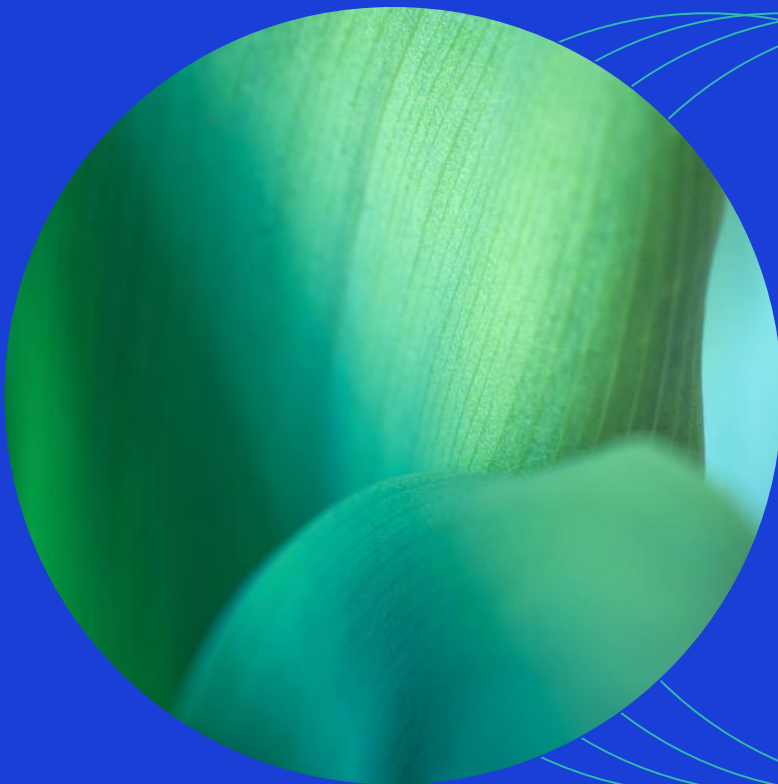




July 2025

# MSCI Fixed Income Selection Indexes Methodology



## Contents

1	Introduction .....	3
2	Constructing the MSCI Fixed Income Selection Indexes .....	4
2.1	Underlying Universe .....	4
2.2	Eligibility Criteria .....	4
2.2.1	ESG Ratings Eligibility .....	4
2.2.2	ESG Controversies Score Eligibility .....	4
2.2.3	Controversial Business Involvement Criteria .....	4
2.3	Index Construction .....	5
2.3.3	Selection of Eligible Issuers.....	5
2.4	Treatment of Unrated Companies.....	5
3	Maintaining the MSCI Fixed Income Selection Indexes .....	7
3.1	Monthly Index Review .....	7
4	MSCI ESG Research.....	9
4.1	MSCI ESG Ratings.....	9
4.2	MSCI ESG Controversies .....	9
4.3	MSCI ESG Business Involvement Screening Research .....	9
	Appendix I: Guidelines on Achieving 50% Target Sector Coverage.....	10
	Appendix II: Controversial Business Screening Criteria .....	11
	Appendix III: Methodology Set .....	13
	Appendix IV: Changes to this Document.....	14

# 1 Introduction

The MSCI Fixed Income Selection Indexes<sup>1</sup> (the 'Indexes') are market value-weighted indexes designed to represent the performance of fixed income securities from issuers that are selected from an underlying index based on Environmental, Social and Governance (ESG) criteria. These criteria exclude constituents based on involvement in specific business activities as well as exposure to ESG controversies. The Indexes are derived from underlying MSCI Corporate Bond Indexes ("Parent Indexes") and aim to achieve sector weights that reflect the sector weights of the corresponding Parent Indexes. The Index construction targets 50% coverage of each Global Industry Classification Standard (GICS®)<sup>2</sup> sector by selecting constituents primarily based on criteria including the ESG rating, the trend in that rating and the company's industry adjusted ESG score.

<sup>1</sup> The Indexes are governed by a set of methodology and policy documents ("Methodology Set"), including the present index methodology document. The Methodology Set for the Indexes can be accessed from MSCI's webpage <https://www.msci.com/index-methodology> in the section 'Search Methodology by Index Name or Index Code'. The Methodology Set includes a document 'ESG Factors in Methodology' that contains the list of environmental, social, and governance factors considered, and how they are applied in the methodology (e.g., selection, weighting or exclusion).

<sup>2</sup> GICS, the global industry classification standard jointly developed by MSCI Inc. and S&P Dow Jones Indices.

## 2 Constructing the MSCI Fixed Income Selection Indexes

### 2.1 Underlying Universe

The selection universe for the MSCI Fixed Income Selection Indexes is defined by the constituents of the underlying MSCI Corporate Bond Indexes.

### 2.2 Eligibility Criteria

The Indexes use company ratings and research provided by MSCI ESG Research<sup>3</sup> to determine eligibility for index inclusion.

#### 2.2.1 ESG Ratings Eligibility

The MSCI Fixed Income Selection Indexes use MSCI ESG Ratings to identify issuers that have demonstrated an ability to manage their ESG risks and opportunities. Issuers are required to have an MSCI ESG Rating of 'BB' or above to be eligible for inclusion in the Indexes.

#### 2.2.2 ESG Controversies Score Eligibility

The MSCI Fixed Income Selection Indexes use MSCI ESG Controversies Scores to identify issuers that are involved in very serious controversies involving the environmental, social, or governance impact of their operations and/or products and services. Issuers are required to have an MSCI ESG Controversies Score of 1 or above to be eligible for inclusion in the Indexes.

#### 2.2.3 Controversial Business Involvement Criteria

The Indexes use MSCI ESG Business Involvement Screening Research to identify companies that are involved in the following business activities. Companies that meet the business involvement criteria are excluded from the Indexes. Please refer to Appendix 2 for details on these criteria.

- Alcohol
- Gambling
- Tobacco
- Nuclear Power
- Conventional Weapons
- Nuclear Weapons
- Controversial Weapons
- Civilian Firearms

<sup>3</sup> See section 4 for further information regarding ESG and climate data used in the Indexes that MSCI Limited and MSCI Deutschland GmbH source from MSCI ESG Research LLC, a separate subsidiary of MSCI Inc. MSCI ESG Research is solely responsible for the creation, determination and management of such data as a provider to MSCI Limited and MSCI Deutschland GmbH. MSCI Limited and MSCI Deutschland GmbH are the benchmark administrators for the MSCI indexes

## 2.3 Index Construction

### 2.3.1 Updating the Eligible Universe

The eligible universe is derived after excluding issuers that do not meet the eligibility criteria described in Section 2.2.

### 2.3.2 Ranking of Eligible

For each GICS sector, eligible issuers of the Parent Index as described in Section 2.2 are ranked based on the following criteria:

- ESG Rating
- ESG Trend<sup>4</sup> (positive ESG Trend preferred to neutral ESG Trend and neutral ESG Trend preferred to negative ESG Trend)
- Current index membership (existing constituents above non-constituents)
- Industry-adjusted ESG scores
- Decreasing market value.

### 2.3.3 Selection of Eligible Issuers

For each sector, eligible issuers of the Parent Index are then selected from the ranked universe in the following order until the target 50% coverage by cumulative market value is reached:

- Issuers in the top 35% cumulative market value coverage of the ranked universe.
- 'AAA' and 'AA' rated issuers in the top 50% cumulative market value coverage of the ranked universe.
- Current index constituent issuers in the top 65% cumulative market value coverage of the ranked universe.
- Remaining eligible issuers in the ranked universe.

Please see Appendix 1 for additional details on the ranking and selection rules. The Indexes include all the fixed income securities in the Parent Index that are issued by companies selected from the eligible universe

## 2.4 Treatment of Unrated Companies

All securities that are not excluded by the specified MSCI ESG Business Involvement Screening Research (BISR) criteria are eligible for inclusion in the index.

---

<sup>4</sup> ESG Trend is defined as the latest change in ESG Rating over the previous 12 months. An issuer without any change in ESG Rating over the previous 12 months will have a neutral ESG Trend.

Companies not assessed by MSCI ESG Research on data for any of the following MSCI ESG Research products are not eligible for inclusion in the Indexes:

- MSCI ESG Ratings
- MSCI ESG Controversies

## 3 Maintaining the MSCI Fixed Income Selection Indexes

### 3.1 Monthly Index Review

- The composition of the Indexes is reviewed monthly, with an effective rebalancing impact on the first business day of the month (Rebalancing Date). For clarification, bonds are added to the Index at the closing of the last business day of every month, however, the return impact is on the first business day of the month.
- In general, change in the Index composition is based on latest<sup>5</sup> data available (including MSCI ESG & Climate data) three days prior to the Rebalancing Date, which is defined as the Cut-Off Date. Any inclusion or exclusion criteria satisfied for a given security in the universe, after the Cut-Off Date (T-3), will generally become effective at the following monthly rebalancing; should conditions remain unchanged. In exceptional cases, for instance, cases of input data correction, MSCI can reduce the Cut-Off Date for Index rebalancing from T-3 to T-2, T-1 or T. In such instances, MSCI will notify Index clients of such changes via announcement.
- MSCI will disclose proforma Index rebalancing results starting the second business day of each month. MSCI will freeze the pro forma Index rebalancing results as of the Cut-Off Date.
- Bonds are added to or deleted from the Index only on monthly rebalancing dates. For the existing Index components any changes to Index eligibility will only be reflected in the next monthly rebalancing.
- Any inclusion or exclusion criteria satisfied for a given security in the universe, after the Cutoff Date, will generally become effective at the following monthly rebalancing; should conditions remain unchanged.
- Any cash that accrues within the index each month is re-invested on a pro-rata basis across the index constituents on the effective date of rebalancing. In essence, cash in the Index is swept out on rebalancing and the opening Index portfolio on the Rebalancing Date starts with zero accrued cash balance.
- Specific variants of total return calculation of the Index on the Rebalancing Date may be adjusted for transaction costs as securities are added to the Index at the offer price.

For further information on index total return calculation please refer to the MSCI Fixed Income Index Calculation Methodology<sup>6</sup>. For the holiday calendar used in the index, please refer to the MSCI

<sup>5</sup> ESG and Climate data will utilize the most recent, quality-assured information available. For index rebalancing, the latest data that has successfully undergone quality assurance checks will be employed. In cases where recent data changes are still undergoing verification, only data that has passed the quality assurance process will be considered.

<sup>6</sup> Please refer to MSCI Fixed Income Index calculation methodology for further details on calculation of market value. Available at <https://www.msci.com/index-methodology>

Fixed Income Data Methodology<sup>7</sup>. MSCI leverages the GICS<sup>®8</sup> sector classification framework for MSCI Corporate Bond Indexes as well. Please refer to MSCI GICS Methodology<sup>9</sup> for details.

---

<sup>7</sup> Please refer to MSCI Fixed Income Index Data methodology for further details on the holiday calendar. Available at <https://www.msci.com/index-methodology>

<sup>8</sup> GICS, the global industry classification standard jointly developed by MSCI Inc. and S&P Dow Jones Indices

<sup>9</sup> The GICS methodology is available at: <https://www.msci.com/gics>



## 4 MSCI ESG Research

The Indexes are products of MSCI Inc. that utilize information such as company ratings and research produced and provided by MSCI ESG Research LLC (MSCI ESG Research), a subsidiary of MSCI Inc. In particular, the Indexes use the following MSCI ESG Research products: MSCI ESG Ratings, MSCI ESG Controversies and MSCI ESG Business Involvement Screening Research. MSCI Indexes are administered by MSCI Limited and MSCI Deutschland GmbH.

### 4.1 MSCI ESG Ratings

MSCI ESG Ratings aim to measure entities' management of environmental, social and governance risks and opportunities. MSCI ESG Ratings use a weighted average key issue calculation that is normalized by industry to arrive at an industry-adjusted ESG score (0-10), which is then translated to a seven-point scale from 'AAA' to 'CCC', indicating how an entity manages relevant key issues relative to industry peers.

The MSCI ESG Ratings methodology can be found at: <https://www.msci.com/legal/disclosures/esg-disclosures>.

### 4.2 MSCI ESG Controversies

MSCI ESG Controversies provide assessments of controversies concerning the potential negative environmental, social, and/or governance impact of company operations, products and services. The evaluation framework used in MSCI ESG Controversies is designed to be consistent with international norms represented by the UN Declaration of Human Rights, the ILO Declaration on Fundamental Principles and Rights at Work, and the UN Global Compact. MSCI ESG Controversies Score falls on a 0-10 scale, with "0" being the most severe controversy.

The MSCI ESG Controversies methodology can be found at: <https://www.msci.com/legal/disclosures/esg-disclosures>.

### 4.3 MSCI ESG Business Involvement Screening Research

MSCI ESG Business Involvement Screening Research (BISR) aims to enable institutional investors to manage environmental, social and governance (ESG) standards and restrictions reliably and efficiently.

For more details on MSCI ESG Business Involvement Screening Research, please refer to <https://www.msci.com/legal/disclosures/esg-disclosures>.

## Appendix I: Guidelines on Achieving 50% Target Sector Coverage

The MSCI Fixed Income Selection Indexes target 50% coverage of the market value of each GICS sector of the Parent Index. The underlying principle in the construction of the indexes is to achieve cumulative sector coverage closest to 50%, while aiming to maintain index stability.

The following guidelines are used in achieving the target cumulative sector coverage of 50%:

- For each sector, the eligible issuers of the Parent Index are first ranked based on the issuer level ESG Rating.
- If two issuers have the same ESG Rating, the issuer with better ESG Trend is given priority (positive ESG Trend preferred to neutral ESG Trend and neutral ESG Trend preferred to negative ESG Trend).
- In case of two issuers with the same ESG Rating and the same ESG Trend, the existing index constituent is given priority to maintain index stability. Between two existing constituents with the same ESG Rating and the same ESG Trend, the company with the higher industry adjusted ESG Score is given priority. For two existing index constituents with the same industry adjusted ESG score, the issuer with the larger market value is given priority.
- The cumulative sector coverage at each rank is calculated.
- In each sector, eligible issuers are selected as per the rules mentioned in Section 2.3.3 until the cumulative sector coverage crosses 50% or there are no eligible issuers left to be selected.
- MSCI defines the issuer that increases the cumulative sector coverage above 50% as the "marginal company".
  - If the marginal issuer is a current index constituent, then it is always selected.
  - If the marginal issuer is not a current index constituent, then it is selected only if the cumulative sector coverage with the marginal issuer is closer to 50% compared to the cumulative sector coverage without the marginal issuer.
- The minimum cumulative sector coverage is set at 45%.
  - The marginal company is always selected if this is required to achieve cumulative sector coverage of 45%.
- Issuers which are ineligible as per Section 2.2 will not be selected even if the cumulative sector coverage after selection of all eligible issuers is below 50%.

## Appendix II: Controversial Business Screening Criteria

Issuers that are involved in certain controversial business activities are excluded from the MSCI Selection Indexes:

- Alcohol
  - All issuers classified as a “Producer” that earn either 50% or more revenue or more than \$1 billion in revenue from alcohol-related products.
- Gambling
  - All issuers classified as involved in “Operations” and “Support” that earn 50% or more in aggregate revenue, or more than \$1 billion in revenue, from gambling-related products.
- Tobacco
  - All issuers classified as a “Producer” that earn either 50% or more revenue or more than \$1 billion in revenue from tobacco-related products.
- Nuclear Power
  - All issuers with 6000 MW or more of installed capacity attributed to nuclear sources or with 50% or more of installed capacity attributed to nuclear sources.
  - All issuers involved in nuclear fuel enrichment for nuclear power generation.
  - All issuers involved in uranium mining for nuclear power generation.
  - All issuers involved in nuclear reactor design or construction for nuclear power generation.
- Conventional Weapons
  - All issuers that manufacture conventional weapons components or conventional weapons and weapons systems and earn 50% or more in revenue, or \$3 billion or more in revenue from these activities.
- Nuclear Weapons
  - All issuers involved in manufacturing nuclear weapon components or nuclear weapon systems.
- Controversial Weapons
  - All issuers with any tie to Controversial Weapons (cluster munitions, landmines, depleted uranium weapons, biological/chemical weapons, blinding lasers, non-detectable fragments and incendiary weapons).
- Civilian Firearms

- All issuers classified as a "Producer" that earn either 50% or more revenue or more than \$100 million in revenue from civilian firearms.

## Appendix III: Methodology Set

The Indexes are governed by a set of methodology and policy documents ("Methodology Set"), including the present index methodology document as mentioned below:

- Description of methodology set –  
<https://www.msci.com/index/methodology/latest/FIInfo>
- MSCI Fixed Income Data Methodology –  
<https://www.msci.com/index/methodology/latest/FIDATA>
- MSCI Fixed Income Calculation Methodology –  
<https://www.msci.com/index/methodology/latest/FIINDEXCALC>
- MSCI Fixed Income Glossary of Terms –  
<https://www.msci.com/index/methodology/latest/FIGLOSS>
- MSCI Fixed Income Index Policies –  
<https://www.msci.com/index/methodology/latest/FIINDEXPOLICY>
- MSCI Corporate Bond Indexes Methodology –  
<https://www.msci.com/index/methodology/latest/FIIGCORP>
- ESG Factors in Methodology\*

The Methodology Set for the Indexes can also be accessed from MSCI's webpage <https://www.msci.com/index-methodology> in the section 'Search Methodology by Index Name or Index Code'.

\*'ESG Factors in Methodology' contains the list of environmental, social, and governance factors considered, and how they are applied in the methodology (e.g., selection, weighting or exclusion). It can be accessed in the Methodology Set as described above.

## Appendix IV: Changes to this Document

**The following modifications have been made since May 2023:**

Section 1 has been updated to provide additional references.  
Re-aligned sections 2 and 4

**The following sections have been modified as of December 2023:**

Updated Section 2 to add further clarification regarding the eligibility of securities.  
Clarified treatment of Cut Off Date for exceptional cases in Section 3.

**The following sections have been modified as of December 2024:**

Section 2

- Added details regarding the MSCI ESG Research data used for Index Construction.

Section 2.4

- New Section detailing the treatment of companies with ratings and research not available from MSCI ESG Research.

Appendix III: Methodology Set

- Added details on the Methodology Set for the Index

**The following sections have been modified as of February 2025:**

- Updated the methodology name from MSCI Fixed Income ESG Leaders Indexes to MSCI Fixed Income Selection Indexes.

**The following sections have been modified as of July 2025:**

- Updated the branding template.
- Updated links for ESG Data Disclosures in Section 4

## Contact Us

### About MSCI

MSCI is a leading provider of critical decision support tools and services for the global investment community. With over 50 years of expertise in research, data and technology, we power better investment decisions by enabling clients to understand and analyze key drivers of risk and return and confidently build more effective portfolios. We create industry-leading research-enhanced solutions that clients use to gain insight into and improve transparency across the investment process.

To learn more, please visit [www.msci.com](http://www.msci.com).  
[msci.com/contact-us](http://msci.com/contact-us)

The process for submitting a formal index complaint can be found on the index regulation page of MSCI's website at: <https://www.msci.com/index-regulation>.

### AMERICA

United States	+ 1 888 588 4567 *
Canada	+ 1 416 687 6270
Brazil	+ 55 11 4040 7830
Mexico	+ 52 81 1253 4020

### EUROPE, MIDDLE EAST & AFRICA

South Africa	+ 27 21 673 0103
Germany	+ 49 69 133 859 00
Switzerland	+ 41 22 817 9777
United Kingdom	+ 44 20 7618 2222
Italy	+ 39 02 5849 0415
France	+ 33 17 6769 810

### EUROPE, MIDDLE EAST & AFRICA

China	+ 86 21 61326611
Hong Kong	+ 852 2844 9333
India	+ 91 22 6784 9160
Malaysia	1800818185 *
South Korea	+ 82 70 4769 4231
Singapore	+ 65 67011177
Australia	+ 612 9033 9333
Taiwan	008 0112 7513 *
Thailand	0018 0015 6207 7181 *
Japan	+ 81 3 4579 0333

\* toll-free

## Notice and Disclaimer

This document and all of the information contained in it, including without limitation all text, data, graphs, charts (collectively, the "Information") is the property of MSCI Inc. or its subsidiaries (collectively, "MSCI"), or MSCI's licensors, direct or indirect suppliers or any third party involved in making or compiling any Information (collectively, with MSCI, the "Information Providers") and is provided for informational purposes only. The Information may not be modified, reverse-engineered, reproduced or disseminated in whole or in part without prior written permission from MSCI. All rights in the Information are reserved by MSCI and/or its Information Providers.

The Information may not be used to create derivative works or to verify or correct other data or information. For example (but without limitation), the Information may not be used to create indexes, databases, risk models, analytics, software, or in connection with the issuing, offering, sponsoring, managing or marketing of any securities, portfolios, financial products or other investment vehicles utilizing or based on, linked to, tracking or otherwise derived from the Information or any other MSCI data, information, products or services.

The user of the Information assumes the entire risk of any use it may make or permit to be made of the Information. NONE OF THE INFORMATION PROVIDERS MAKES ANY EXPRESS OR IMPLIED WARRANTIES OR REPRESENTATIONS WITH RESPECT TO THE INFORMATION (OR THE RESULTS TO BE OBTAINED BY THE USE THEREOF), AND TO THE MAXIMUM EXTENT PERMITTED BY APPLICABLE LAW, EACH INFORMATION PROVIDER EXPRESSLY DISCLAIMS ALL IMPLIED WARRANTIES (INCLUDING, WITHOUT LIMITATION, ANY IMPLIED WARRANTIES OF ORIGINALITY, ACCURACY, TIMELINESS, NON-INFRINGEMENT, COMPLETENESS, MERCHANTABILITY AND FITNESS FOR A PARTICULAR PURPOSE) WITH RESPECT TO ANY OF THE INFORMATION.

Without limiting any of the foregoing and to the maximum extent permitted by applicable law, in no event shall any Information Provider have any liability regarding any of the Information for any direct, indirect, special, punitive, consequential (including lost profits) or any other damages even if notified of the possibility of such damages. The foregoing shall not exclude or limit any liability that may not by applicable law be excluded or limited, including without limitation (as applicable), any liability for death or personal injury to the extent that such injury results from the negligence or willful default of itself, its servants, agents or sub-contractors.

Information containing any historical information, data or analysis should not be taken as an indication or guarantee of any future performance, analysis, forecast or prediction. Past performance does not guarantee future results.

The Information may include "Signals," defined as quantitative attributes or the product of methods or formulas that describe or are derived from calculations using historical data. Neither these Signals nor any description of historical data are intended to provide investment advice or a recommendation to make (or refrain from making) any investment decision or asset allocation and should not be relied upon as such. Signals are inherently backward-looking because of their use of historical data, and they are not intended to predict the future. The relevance, correlations and accuracy of Signals frequently will change materially.

The Information should not be relied on and is not a substitute for the skill, judgment and experience of the user, its management, employees, advisors and/or clients when making investment and other business decisions. All Information is impersonal and not tailored to the needs of any person, entity or group of persons.

None of the Information constitutes an offer to sell (or a solicitation of an offer to buy), any security, financial product or other investment vehicle or any trading strategy.

It is not possible to invest directly in an index. Exposure to an asset class or trading strategy or other category represented by an index is only available through third party investable instruments (if any) based on that index. MSCI does not issue, sponsor, endorse, market, offer, review or otherwise express any opinion regarding any fund, ETF, derivative or other security, investment, financial product or trading strategy that is based on, linked to or seeks to provide an investment return related to the performance of any MSCI index (collectively, "Index Linked Investments"). MSCI makes no assurance that any Index Linked Investments will accurately track index performance or provide positive investment returns. MSCI Inc. is not an investment adviser or fiduciary and MSCI makes no representation regarding the advisability of investing in any Index Linked Investments. Index returns do not represent the results of actual trading of investible assets/securities. MSCI maintains and calculates indexes, but does not manage actual assets. The calculation of indexes and index returns may deviate from the stated methodology. Index returns do not reflect payment of any sales charges or fees an investor may pay to purchase the securities underlying the index or Index Linked Investments. The imposition of these fees and charges would cause the performance of an Index Linked Investment to be different than the MSCI index performance.

The Information may contain back tested data. Back-tested performance is not actual performance, but is hypothetical. There are frequently material differences between back tested performance results and actual results subsequently achieved by any investment strategy.

Constituents of MSCI equity indexes are listed companies, which are included in or excluded from the indexes according to the application of the relevant index methodologies. Accordingly, constituents in MSCI equity indexes may include MSCI Inc., clients of MSCI or suppliers to MSCI.

Inclusion of a security within an MSCI index is not a recommendation by MSCI to buy, sell, or hold such security, nor is it considered to be investment advice.

Data and information produced by various affiliates of MSCI Inc., including MSCI ESG Research LLC and Barra LLC, may be used in calculating certain MSCI indexes. More information can be found in the relevant index methodologies on [www.msci.com](http://www.msci.com).

MSCI receives compensation in connection with licensing its indexes to third parties. MSCI Inc.'s revenue includes fees based on assets in Index Linked Investments. Information can be found in MSCI Inc.'s company filings on the Investor Relations section of [msci.com](http://msci.com).

MSCI ESG Research LLC is a Registered Investment Adviser under the Investment Advisers Act of 1940 and a subsidiary of MSCI Inc. Neither MSCI nor any of its products or services recommends, endorses, approves or otherwise expresses any opinion regarding any issuer, securities, financial products or instruments or trading strategies and MSCI's products or services are not a recommendation to make (or refrain from making) any kind of investment decision and may not be relied on as such, provided that applicable products or services from MSCI ESG Research may constitute investment advice. MSCI ESG Research materials, including materials utilized in any MSCI ESG Indexes or other products, have not been submitted to, nor received approval from, the United States Securities and Exchange Commission or any other regulatory body. MSCI ESG and climate ratings,



research and data are produced by MSCI ESG Research LLC, a subsidiary of MSCI Inc. MSCI ESG Indexes, Analytics and Real Estate are products of MSCI Inc. that utilize information from MSCI ESG Research LLC. MSCI Indexes are administered by MSCI Limited (UK) and MSCI Deutschland GmbH. Please note that the issuers mentioned in MSCI ESG Research materials sometimes have commercial relationships with MSCI ESG Research and/or MSCI Inc. (collectively, "MSCI") and that these relationships create potential conflicts of interest. In some cases, the issuers or their affiliates purchase research or other products or services from one or more MSCI affiliates. In other cases, MSCI ESG Research rates financial products such as mutual funds or ETFs that are managed by MSCI's clients or their affiliates, or are based on MSCI Inc. Indexes. In addition, constituents in MSCI Inc. equity indexes include companies that subscribe to MSCI products or services. In some cases, MSCI clients pay fees based in whole or part on the assets they manage. MSCI ESG Research has taken a number of steps to mitigate potential conflicts of interest and safeguard the integrity and independence of its research and ratings. More information about these conflict mitigation measures is available in our Form ADV, available at <https://adviserinfo.sec.gov/firm/summary/169222>.

Any use of or access to products, services or information of MSCI requires a license from MSCI. MSCI, Barra, RiskMetrics, IPD and other MSCI brands and product names are the trademarks, service marks, or registered trademarks of MSCI or its subsidiaries in the United States and other jurisdictions. The Global Industry Classification Standard (GICS) was developed by and is the exclusive property of MSCI and S&P Global Market Intelligence. "Global Industry Classification Standard (GICS)" is a service mark of MSCI and S&P Global Market Intelligence.

MIFID2/MIFIR notice: MSCI ESG Research LLC does not distribute or act as an intermediary for financial instruments or structured deposits, nor does it deal on its own account, provide execution services for others or manage client accounts. No MSCI ESG Research product or service supports, promotes or is intended to support or promote any such activity. MSCI ESG Research is an independent provider of ESG data.

Privacy notice: For information about how MSCI collects and uses personal data, please refer to our Privacy Notice at <https://www.msci.com/privacy-pledge>.