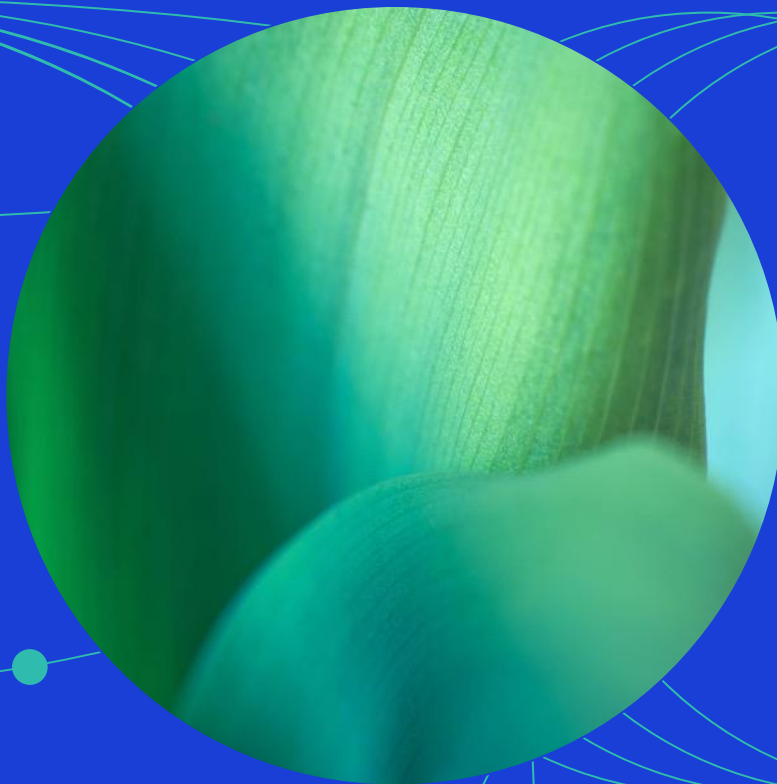




MSCI Global Low Carbon Target Indexes Methodology



Contents

| | | |
|----------|--|-----------|
| 1 | Introduction | 3 |
| 2 | Constructing the Indexes | 4 |
| 2.1 | Defining the Eligible Universe | 4 |
| 2.2 | Defining the Carbon Exposure of Each Security in the Eligible Universe..... | 4 |
| 2.3 | Defining the Optimization Parameters | 5 |
| 2.4 | Determining the Optimized Index | 5 |
| 2.5 | Treatment of Unrated Companies | 5 |
| 3 | Maintaining the Indexes | 7 |
| 3.1 | Semi-Annual Index Reviews..... | 7 |
| 3.2 | Ongoing Event-Related Maintenance | 7 |
| 4 | MSCI Solutions | 9 |
| 4.1 | MSCI Controversies | 9 |
| 4.2 | MSCI Business Involvement Screening Research | 9 |
| 4.3 | MSCI Climate Change Metrics | 9 |
| | Appendix I: Calculation of Carbon Exposure Metrics..... | 10 |
| | Appendix II: Companies Involved in Controversial Weapons Business | 12 |
| | Appendix III: Barra Equity Model Used in The Optimization..... | 14 |
| | Appendix IV: New release of Barra® Equity Model or Barra® Optimizer | 15 |
| | Appendix V: Methodology Transition | 16 |
| | Appendix VI: Methodology Set..... | 18 |
| | Appendix VII: Changes to this Document | 19 |

1 Introduction

The MSCI Global Low Carbon Target Indexes (the “Indexes”) are designed to address two dimensions of carbon exposure – carbon emissions and fossil fuel reserves. The Index is constructed by selecting constituents of a market capitalization weighted index (the “Parent Index”) through an optimization process that aims to:

- Maximize the reduction of carbon exposure relative to the respective Parent Index, measured by carbon emissions and fossil fuel reserves, while ensuring a reduction of at least 30%.
- Control tracking error by applying an ex-ante tracking error constraint of 50 bps while minimizing carbon exposure.
- Have low active sector, country, and regional biases relative to the respective Parent Index¹.

¹ The Indexes are governed by a set of methodology and policy documents (“Methodology Set”), including the present index methodology document. Please refer to Appendix VI for more details.

2 Constructing the Indexes

The Indexes use company ratings and research provided by MSCI Solutions² for the Index construction.

Constructing the Indexes involves the following steps:

- Defining the Eligible Universe
- Defining the Carbon Exposure of each security in the Eligible universe
- Defining the optimization parameters
- Determining the optimized index

2.1 Defining the Eligible Universe

The Eligible Universe for the Indexes is defined by applying the following exclusions on the constituents of the Parent Index.

- **Controversial Weapons:** All companies involved in Controversial Weapons as defined by the methodology of the MSCI Ex-Controversial Weapons Indexes.
- **Controversies:** Companies assessed as having involvement in Controversies that are classified as Red Flags (MSCI Controversy Score of 0) A Red Flag indicates an ongoing Very Severe controversy implicating a company directly through its actions, products, or operations.
- **Thermal Coal Mining:** All companies deriving 1% or more revenue (either reported or estimated) from the mining of thermal coal (including lignite, bituminous, anthracite and steam coal) and its sale to external parties. It excludes revenue from metallurgical coal, coal mined for internal power generation (e.g., in the case of vertically integrated power producers), intracompany sales of mined thermal coal, and revenue from coal trading (either reported or estimated).
- **Oil Sands:** All companies deriving 5% or more revenue from oil sands extraction, which own sands reserves and disclose evidence of deriving revenue from oil sands extraction. Companies that derive revenue from non-extraction activities (e.g., exploration, surveying, processing, refining) or intra-company sales are not excluded. Additionally, companies with no associated revenue are also not excluded.

2.2 Defining the Carbon Exposure of Each Security in the Eligible Universe

The Carbon Exposure of a security is measured in terms of its greenhouse gas (GHG) emissions and its potential emissions from fossil fuel reserves. Please refer to Appendix I for more details.

² See section 4 for further information regarding sustainability and climate data used in the Indexes that MSCI Limited and MSCI Deutschland GmbH source from MSCI Solutions LLC, a separate subsidiary of MSCI Inc. MSCI Solutions is solely responsible for the creation, determination and management of such data as a provider to MSCI Limited and MSCI Deutschland GmbH. MSCI Limited and MSCI Deutschland GmbH are the benchmark administrators for the MSCI indexes.

2.3 Defining the Optimization Parameters

The Indexes are constructed using an optimization process that applies the following objective and constraints:

- Minimize the carbon exposure subject to a tracking error constraint of 50 basis points relative to the respective Parent Index
- A minimum reduction of 30% in Greenhouse Gas (GHG) Intensity (Scope 1+2+3) relative to the respective Parent Index
- A minimum reduction of 30% in Potential Emissions Intensity relative to the Parent Index.
- The maximum weight of an Index constituent will be restricted to 20 times its weight in the respective Parent Index
- The country weight in the Indexes will not deviate more than +/-2% from the country weight in the respective Parent Index
- The above country weight constraint will also apply on China A Stock Connect listings as a group separately in addition to the usual country weight constraint on China
- The sector weights in the Indexes will not deviate more than +/-2% from the sector weights in the Parent Index with the exception of the Energy Sector where the sector weight constraint is not applied
- The one-way turnover of the Indexes is constrained to a maximum of 10% at each index review

In the event that there is no optimal solution that satisfies all the optimization constraints, the turnover constraint will be relaxed up to a maximum turnover of 20% in steps of 1% until an optimal solution is found. If a feasible solution is still not found, the predicted tracking error is instead relaxed in steps of 10 basis points.

2.4 Determining the Optimized Index

The Indexes are constructed using the Barra Open Optimizer in combination with the relevant Barra Equity Model. The optimization uses the universe of eligible securities and the specified optimization objective and constraints to determine the constituents of the Index. After the optimization process, any securities with extremely low weights (less than 1/10th of the minimum weight in the Parent Index) are eliminated, and their weight is proportionately distributed over the remaining securities in order to determine the final Index constituents.

2.5 Treatment of Unrated Companies

Companies not assessed by MSCI Solutions on data for the following MSCI sustainability and climate product are not eligible for inclusion in the Indexes.

- MSCI Controversies
- MSCI Climate Change Metrics
- MSCI Business Involvement Screening Research (BISR)

For the treatment of unrated companies in the calculation of Carbon Exposure metrics, please refer to Appendix I.

3 Maintaining the Indexes

3.1 Index Reviews

The Indexes are reviewed on a semi-annual basis in May and November to coincide with the May and November Index Reviews of the MSCI Global Investable Market Indexes, and the changes are implemented as of the close of the last business day of May and November. In general, the pro forma Index is announced nine business days before the effective date.

At each Index Review, the optimization process outlined in Section 2 is implemented. In general, MSCI uses MSCI Solutions data³ (i.e., MSCI Climate Change Metrics, MSCI Controversies and MSCI Business Involvement Screening Research) as of the end of the month preceding the Index Reviews. For some securities, such data may not be published by MSCI Solutions by the end of the month preceding the Index Review. For such securities, MSCI will use ESG data published after the end of month, when available.

3.2 Ongoing Event-Related Maintenance

The general treatment of corporate events in the Index aims to minimize turnover outside of Index Reviews. The methodology aims to appropriately represent an investor’s participation in an event based on relevant deal terms and pre-event weighting of the index constituents that are involved. Further, changes in index market capitalization that occur as a result of corporate event implementation will be offset by a corresponding change in the Variable Weighting Factor (VWF) of the constituent.

Additionally, if the frequency of Index Reviews in the Parent Index is greater than the frequency of Index Reviews in the Index, the changes made to the Parent Index during intermediate Index Reviews will be neutralized in the Index.

The following section briefly describes the treatment of common corporate events within the Index.

No new securities will be added (except where noted below) to the Index between Index Reviews. Parent Index deletions will be reflected simultaneously.

Event Type

Event Details

New additions to the Parent Index

A new security added to the Parent Index (such as IPO and other early inclusions) will not be added to the index.

Spin-Offs

All securities created as a result of the spin-off of an existing Index constituent will be added to the Index at the time of event implementation. Reevaluation for continued inclusion in the Index will occur at the subsequent Index Review.

³ See section 4 for details of data sourced from MSCI Solutions used in the Indexes.

Merger/Acquisition

For Mergers and Acquisitions, the acquirer’s post event weight will account for the proportionate amount of shares involved in deal consideration, while cash proceeds will be invested across the Index.

If an existing Index constituent is acquired by a non-Index constituent, the existing constituent will be deleted from the Index and the acquiring non-constituent will not be added to the Index.

Changes in Security Characteristics

A security will continue to be an Index constituent if there are changes in characteristics (country, sector, size segment, etc.) Reevaluation for continued inclusion in the Index will occur at the subsequent Index Review.

Further detail and illustration regarding specific treatment of corporate events relevant to this Index can be found in the MSCI Corporate Events Methodology book under the sections detailing the treatment of events in Capped Weighted and Non-Market Capitalization Weighted indexes.

The MSCI Corporate Events methodology book is available at:

<https://www.msci.com/index/methodology/latest/CE>.

4 MSCI Solutions

The Indexes are products of MSCI Inc. that utilize information such as company ratings and research produced and provided by MSCI Solutions LLC (MSCI Solutions), a subsidiary of MSCI Inc. In particular, the Indexes use the following MSCI sustainability and climate products: MSCI Controversies, MSCI Business Involvement Screening Research, MSCI Climate Change Metrics. MSCI Indexes are administered by MSCI Limited and MSCI Deutschland GmbH.

4.1 MSCI Controversies

MSCI Controversies provide assessments of controversies concerning the potential negative environmental, social, and/or governance impact of company operations, products and services. The evaluation framework used in MSCI Controversies is designed to be consistent with international norms represented by the UN Declaration of Human Rights, the ILO Declaration on Fundamental Principles and Rights at Work, and the UN Global Compact. MSCI Controversies Score falls on a 0-10 scale, with "0" being the most severe controversy.

The MSCI Controversies methodology can be found at: <https://www.msci.com/legal/disclosures/esg-disclosures>.

4.2 MSCI Business Involvement Screening Research

MSCI Business Involvement Screening Research (BISR) aims to enable institutional investors to manage environmental, social and governance (ESG) standards and restrictions reliably and efficiently.

The MSCI Business Involvement Screening Research methodology can be found at: <https://www.msci.com/legal/disclosures/esg-disclosures>.

4.3 MSCI Climate Change Metrics

MSCI Climate Change Metrics provides climate data and tools to support institutional investors seeking to integrate climate risk and opportunities into their investment strategy and processes. This includes investors seeking to achieve a range of objectives, including measuring and reporting on climate risk exposure, implementing low carbon and fossil fuel-free strategies, alignment with temperature pathways and factoring climate change research into their risk management processes, in particular through climate scenario analysis for both transition and physical risks.

The dataset spans across the four dimensions of a climate strategy: transition risks, green opportunities, physical risks and 1.5° alignment.

For more details on MSCI Climate Change Metrics, please refer to <https://www.msci.com/legal/disclosures/climate-disclosures>

Appendix I: Calculation of Carbon Exposure Metrics

Index Carbon Emissions

Greenhouse Gas (GHG) Emissions Intensity

MSCI Solutions collects company-specific direct (Scope 1) and indirect (Scope 2) greenhouse gas emissions (GHG) data from company public documents and/or the Carbon Disclosure Project. If a company does not report GHG emissions, then MSCI Solutions estimates Scope 1 and Scope 2 GHG emissions.

MSCI Solutions estimates company-specific indirect (Scope 3) GHG emissions from the Scope 3 Carbon Emissions Estimation Model. The data is generally updated on an annual basis.

Calculation of GHG Intensity

Carbon emissions of a company are normalized for size by dividing annual carbon emissions by Enterprise Value including Cash (EVIC). The Carbon Emissions Intensity is calculated using the latest Scope 1+2 carbon emissions, Scope 3 carbon emissions and EVIC of a company.

Security Level GHG Intensity (Scope 1+2+3) =

$$\text{Security Level GHG Intensity (Scope 1 + 2)} + \text{Security Level GHG Intensity (Scope 3)}$$

Security Level GHG Intensity (Scope 1+2) =

$$\frac{(\text{Scope 1 + 2 Carbon Emissions})}{\text{EVIC (in M\$)}}$$

If Scope 1+2 carbon emissions and/or EVIC are not available, the average Scope 1+2 intensity of all the constituents of the MSCI ACWI in the same GICS Industry Group in which the security belongs is used.

Unadjusted Security Level GHG Intensity (Scope 3) =

$$\frac{(\text{Scope 3 Carbon Emissions})}{\text{EVIC (in M\$)}}$$

If Scope 3 carbon emissions and/or EVIC are not available, the average Scope 3 intensity of all the constituents of the MSCI ACWI in the same GICS Industry Group in which the security belongs is used.

Weighted Average GHG Intensity of Index =

$$\sum_i (\text{Index Weight} * \text{Security Level GHG Intensity})$$

Index Potential Emissions Intensity

MSCI Solutions collects fossil fuel reserves data where relevant for companies which have reserves, typically in the Oil & Gas, Coal Mining and Electric Utilities industries. Fossil fuel reserves can be used for several applications including energy or industrial purposes (e.g., coking coal used for steel production). For the construction of the MSCI Global Low Carbon Target Indexes, only fossil fuel reserves used for energy purposes are taken into account.

To convert reserves data to potential carbon emissions, MSCI Solutions applies a formula from the Potsdam Institute for Climate Impact Research.⁴

MSCI normalizes for the company’s size by dividing the potential carbon emissions of the company by its EVIC.

Security Level Potential Emissions Intensity =

$$\frac{\text{Potential Emissions}}{\text{EVIC (in M\$)}}$$

If potential emissions data is not available, MSCI uses zero fossil fuel reserves.

Weighted Average Potential Emissions Intensity of Index =

$$\sum_i (\text{Index Weight} * \text{Security Level Potential Emissions Intensity})$$

⁴ Malte Meinshausen, Nicolai Meinshausen, William Hare, Sarah C. B. Raper, Katja Frieler, Reto Knutti, David J. Frame & Myles R. Allen. *Greenhouse-gas emission Target for limiting global warming to 2 °C.* **Nature** 458, 1158-1162 (30 April 2009) | doi:10.1038/nature08017; Received 25 September 2008; Accepted 25 March 2009. Supplementary Information, p. 7.

Appendix II: Companies Involved in Controversial Weapons Business

Companies which meet the following Controversial Weapons criteria are excluded from the Index

- **Cluster Bombs**
MSCI Solutions' cluster bomb research identifies public companies that are involved in the production of cluster bombs and munitions, or the essential components of these products.
- **Landmines**
MSCI Solutions' landmines research identifies public companies that are involved in the production of anti - personnel landmines, anti - vehicle landmines, or the essential components of these products.
- **Depleted Uranium Weapons**
MSCI Solutions' depleted uranium weapons research identifies public companies involved in the production of depleted uranium weapons and armor.
- **Chemical and Biological Weapons**
MSCI Solutions' chemical and biological weapons research identifies public companies that are involved in the production of chemical and biological weapons, or the essential components of these products.
- **Blinding Laser Weapons**
MSCI Solutions' blinding laser weapons research identifies public companies that are involved in the production of weapons utilizing laser technology to cause permanent blindness.
- **Non-Detectable Fragments**
MSCI Solutions' non-detectable fragments research identifies public companies that are involved in the production of weapons that use non-detectable fragments to inflict injury.
- **Incendiary Weapons (White Phosphorus)**
MSCI Solutions' incendiary weapons research identifies companies that are involved in the production of weapons using white phosphorus.

Involvement criteria:

- Producers of the weapons
- Producers of key components of the weapons (only applies to cluster bombs, landmines, depleted uranium weapons as well as chemical and biological weapons)
- Ownership of 20% or more of a weapons or components producer
- The minimum limit is raised to 50% for financial companies having an ownership in a company that manufactures controversial weapons or key components of controversial weapons

- Owned 50% or more by a company involved in weapons or components production

Revenue limits:

Any identifiable revenues, i.e., zero tolerance

The exclusion criteria above are reflective of the MSCI Global ex Controversial Weapons Index Methodology⁵. For details please refer to MSCI Global ex Controversial Weapons Indexes Methodology at <https://www.msci.com/index/methodology/latest/XCW>.

⁵ For more information, please refer to the MSCI Global ex Controversial Weapons Index Methodology at www.msci.com/index-methodology

Appendix III: Barra Equity Model Used in The Optimization

Since inception till the November 2017 Semi-Annual Index Review, the Index had an optimization setup which used the Barra Global Equity Model (GEM3L).

The Index currently use has an optimization setup which uses the MSCI Barra Global Equity Model for Long-Term Investors (GEMLTL). The change of optimization setup was completed without any change in the prevailing index methodology.

Appendix IV: New release of Barra[®] Equity Model or Barra[®] Optimizer

A major new release of the relevant Barra Equity Model or Barra Optimizer may replace the former version within a suitable timeframe.

Appendix V: Methodology Transition

The Index transitioned to the enhanced methodology as part of the November 2022 Semi-Annual Index Review (SAIR).

History of Indexes Created After the Transition

For Indexes created after the transition, the enhancements will be implemented in the Index history as per the following schedule.

| Methodology Enhancement | Reference to Methodology Book Section | Historical Implementation Date |
|--|--|---------------------------------------|
| (1) Relaxation mechanism in case of infeasible optimization | Section 2.3 | November 2013 SAIR |
| (2) BISR and Controversies Screens | Section 2.1 | November 2013 SAIR |
| (3) Increase in Sector Limit for Carbon Emissions Exclusions | Section 2.3 | November 2013 SAIR |
| (4) Use of EVIC and Weighted Average method to calculate Carbon Exposure Metrics | Appendix I | November 2013 SAIR |
| (5) Use of "Fossil Fuel Reserves Energy Application" factor to calculate Potential Emissions | Section 2.2.2 | May 2020 SAIR |
| (6) Use of Scope 3 Emissions in defining Carbon Exposure | Section 2.2.1 | May 2020 SAIR |

Treatment of Certain Custom Indexes

As announced by MSCI on September 15, 2022 to subscribers of relevant custom indexes, the enhancements were not implemented as part of the November 2022 SAIR in certain custom indexes that have been referencing the MSCI Global Low Carbon Target Indexes methodology in their specification forms. Therefore, for such custom indexes, the MSCI Global Low Carbon Target Indexes methodology will no longer be used as a basis for the weighting and rebalancing of such indexes starting December 1, 2022 and until further notice or otherwise agreed. Subscribers should instead refer to MSCI Global Low Carbon Target Core Indexes methodology available at <https://www.msci.com/index-methodology> as a basis for the weighting and rebalancing of such indexes.

Appendix VI: Methodology Set

The Indexes are governed by a set of methodology and policy documents (“Methodology Set”), including the present index methodology document as mentioned below:

- Description of methodology set – <https://www.msci.com/index/methodology/latest/ReadMe>
- MSCI Corporate Events Methodology – <https://www.msci.com/index/methodology/latest/CE>
- MSCI Fundamental Data Methodology – <https://www.msci.com/index/methodology/latest/FundData>
- MSCI Index Calculation Methodology – <https://www.msci.com/index/methodology/latest/IndexCalc>
- MSCI Index Glossary of Terms – <https://www.msci.com/index/methodology/latest/IndexGlossary>
- MSCI Index Policies – <https://www.msci.com/index/methodology/latest/IndexPolicy>
- MSCI Global Industry Classification Standard (GICS) Methodology – <https://www.msci.com/index/methodology/latest/GICS>
- MSCI Global Investable Market Indexes Methodology – <https://www.msci.com/index/methodology/latest/GIMI>
- ESG Factors In Methodology*

The Methodology Set for the Indexes can also be accessed from MSCI’s webpage <https://www.msci.com/index-methodology> in the section ‘Search Methodology by Index Name or Index Code’.

* ‘ESG Factors in Methodology’ contains the list of environmental, social, and governance factors considered, and how they are applied in the methodology (e.g., selection, weighting or exclusion). It can be accessed in the Methodology Set as described above.

Appendix VII: Changes to this Document

The following sections have been modified since September 2014:

The details on the Corporate Events treatment are now included in Section 4.2.

The following sections have been modified since June 2017:

Section 3.2

- Updated link to the description of MSCI ESG CarbonMetrics

Section 4.1

- Clarification on use of ESG data for securities whose data would be available after the end of the month preceding Index Review.

The following sections have been modified since September 2017:

Section 3.4

- Clarification on the turnover constraint applied at each index review.

The following sections have been modified since October 2017:

Appendix II: Barra Equity Model Used In the Optimization

- Added Appendix II to update the information on transition of MSCI Global Low Carbon Target Indexes to GEMLTL

The following sections have been modified since November 2017:

Section 3.4

Updated to reflect the additional constraint on China A Stock Connect listings

The following sections have been modified since the November 2022 Semi-Annual Index Review following the transition to the enhanced methodology:

Section 2

- Added the information on ESG Products used in the Index methodology

Section 3.1

- Added the list of ESG exclusions

Section 3.2.1

- Added reference to Scope 3 emissions
- Changed the metric used to normalize carbon emissions

Section 3.2.2

- Changed the metric used to normalize Potential Emissions

Section 3.3

- Changed the tracking error constraint

Appendix 2 Companies Involved in Controversial Weapons Business

- Added detailing Controversial Weapons criteria

Appendix 4 New release of Barra® Equity Model or Barra® Optimizer

- Added to clarify treatment of new releases of the relevant Barra Equity Model or Barra Optimizer

The following sections have been modified since February 2023:

- Methodology book was updated to reflect the transition of the MSCI Global Investable Market Indexes (GIMI) to Quarterly Comprehensive Index Reviews.
- All references to “Semi-Annual Index Reviews” and “Quarterly Index Reviews” of the MSCI GIMI were replaced with “Index Reviews”

Appendix 5 Methodology Transition

- Added an appendix on the transition to the new methodology

The following sections have been modified as of May 2023:

Section 2.1

- Clarified the exclusion criteria for companies involved in ESG Controversies

Section 4: MSCI ESG Research

- Moved that section after the Section 3 (Maintaining the MSCI Low Carbon Target Indexes)
- Updated the descriptions of MSCI ESG Research products

The following sections have been modified as of January 2024:

Sections 2.2.1 and 2.2.2

- Sections deleted and content moved to Appendix 1

Section 2.5

- New section detailing the treatment of companies with ratings and research not available from MSCI ESG Research

Appendix 1

- The calculation of GHG Intensity was updated to reflect the missing data treatment for Scope 1+2, Scope 3 and EVIC. The calculation of Potential Emissions Intensity was clarified.

Appendix 6

- Added details on the Methodology Set for the Indexes

The following sections have been modified as of November 2024:

Section 2.6 Treatment of Unrated Companies

- Added the treatment of companies when data on business involvement screening research or climate change metrics research is not available from MSCI ESG Research

Section 4 MSCI ESG Research

- Updated with the latest descriptions and links

The following sections have been modified as of November 2025

Section 1: Introduction

- Updated the optimization objective to specify that the reduction of carbon exposure relative to the Parent Index must achieve a minimum reduction of 30% in Carbon Exposure

Section 2.3: Defining the Optimization Parameters

- Added new optimization parameters to ensure a minimum 30% reduction in Carbon Exposure, including Greenhouse Gas (GHG) Intensity and Potential Emissions Intensity relative to the Parent Index

Contact Us

About MSCI

MSCI is a leading provider of critical decision support tools and services for the global investment community. With over 50 years of expertise in research, data and technology, we power better investment decisions by enabling clients to understand and analyze key drivers of risk and return and confidently build more effective portfolios. We create industry-leading research-enhanced solutions that clients use to gain insight into and improve transparency across the investment process.

To learn more, please visit www.msci.com.
msci.com/contact-us

The process for submitting a formal index complaint can be found on the index regulation page of MSCI's website at: <https://www.msci.com/index-regulation>.

AMERICA

| | |
|---------------|--------------------|
| United States | + 1 888 588 4567 * |
| Canada | + 1 416 687 6270 |
| Brazil | + 55 11 4040 7830 |
| Mexico | + 52 81 1253 4020 |

EUROPE, MIDDLE EAST & AFRICA

| | |
|----------------|--------------------|
| South Africa | + 27 21 673 0103 |
| Germany | + 49 69 133 859 00 |
| Switzerland | + 41 22 817 9777 |
| United Kingdom | + 44 20 7618 2222 |
| Italy | + 39 02 5849 0415 |
| France | + 33 17 6769 810 |

ASIA PACIFIC

| | |
|-------------|-----------------------|
| China | + 86 21 61326611 |
| Hong Kong | + 852 2844 9333 |
| India | + 91 22 6784 9160 |
| Malaysia | 1800818185 * |
| South Korea | + 82 70 4769 4231 |
| Singapore | + 65 67011177 |
| Australia | + 612 9033 9333 |
| Taiwan | 008 0112 7513 * |
| Thailand | 0018 0015 6207 7181 * |
| Japan | + 81 3 4579 0333 |

* toll-free

Notice and Disclaimer

The data, data feeds, databases, reports, text, graphs, charts, images, videos, recordings, models, metrics, analytics, indexes, ratings, scores, cases, estimates, assessments, software, websites, products, services and other information and materials contained herein or delivered in connection with this notice (collectively, the "Information") are copyrighted, trade secrets (when not publicly available), trademarks and proprietary property of MSCI Inc. or its subsidiaries (collectively, "MSCI"), MSCI's licensors, direct or indirect suppliers and authorized sources, and/or any third party contributing to the Information (collectively, with MSCI, the "Information Providers"). All rights in the Information are reserved by MSCI and its Information Providers and user(s) shall not, nor assist others to, challenge or assert any rights in the Information.

Unless you contact MSCI and receive its prior written permission, you must NOT use the Information, directly or indirectly, in whole or in part (i) for commercial purposes, (ii) in a manner that competes with MSCI or impacts its ability to commercialize the Information or its services, (iii) to provide a service to a third party, (iv) to permit a third party to directly or indirectly access, use or resell the Information, (v) to redistribute or resell the Information in any form, (vi) to include the Information in any materials for public dissemination such as fund fact sheets, market presentations, prospectuses, and investor information documents (e.g. KIIDs or KIDs), (vii) to create or as a component of any financial products, whether listed or traded over the counter or on a private placement basis or otherwise, (viii) to create any indexes, ratings or other data products, including in derivative works combined with other indexes or data or as a policy, product or performance benchmarks for active, passive or other financial products, (ix) to populate a database, or (x) to train, use as an input to, or otherwise in connection with any artificial intelligence, machine learning, large language models or similar technologies except as licensed and expressly authorized under MSCI's AI Contracting Supplement at <https://www.msci.com/legal/supplemental-terms-for-client-use-of-artificial-intelligence>.

The intellectual property rights of MSCI and its Information Providers may not be misappropriated or used in a competitive manner through the use of third-party data or financial products linked to the Information, including by using an MSCI index-linked future or option in a competing third-party index to provide an exposure to the underlying MSCI index or by using an MSCI index-linked ETF to create a financial product that provides an exposure to the underlying MSCI index without obtaining a license from MSCI.

The user or recipient of the Information assumes the entire risk of any use it may make, permit or cause to be made of the Information. NONE OF THE INFORMATION PROVIDERS MAKES ANY EXPRESS OR IMPLIED WARRANTIES OR REPRESENTATIONS WITH RESPECT TO THE INFORMATION (OR THE RESULTS TO BE OBTAINED BY THE USE THEREOF), AND TO THE MAXIMUM EXTENT PERMITTED BY APPLICABLE LAW, EACH INFORMATION PROVIDER EXPRESSLY DISCLAIMS ALL IMPLIED WARRANTIES (INCLUDING ANY IMPLIED WARRANTIES OF ORIGINALITY, ACCURACY, TIMELINESS, SUITABILITY, NON-INFRINGEMENT, COMPLETENESS, MERCHANTABILITY AND FITNESS FOR A PARTICULAR PURPOSE) WITH RESPECT TO ANY OF THE INFORMATION. Without limiting any of the foregoing and to the maximum extent permitted by applicable law, in no event shall MSCI or any other Information Provider have any liability arising out of or relating to any of the Information, including for any direct, indirect, special, punitive, consequential (including lost profits) or any other damages, even if notified of the possibility of such damages. The foregoing shall not exclude or limit any liability that may not by applicable law be excluded or limited.

The Information, including index construction, ratings, historical data, or analysis, is not a prediction or guarantee of future performance, and must not be relied upon as such. Past performance is not indicative of future results. The Information may contain back tested data. Back-tested performance based on back-tested data is not actual performance but is hypothetical. There are frequently material differences between back tested performance results and actual results subsequently achieved by any investment strategy. The Information may include "Signals," defined as quantitative attributes or the product of methods or formulas that describe or are derived from calculations using historical data. Signals are inherently backward-looking because of their use of historical data, and they are inherently inaccurate, not intended to predict the future and must not be relied upon as such. The relevance, correlations and accuracy of Signals frequently change materially over time.

The Information may include data relating to indicative prices, evaluated pricing or other information based on estimates or evaluations (collectively, "Evaluations") that are not current and do not reflect real-time traded prices. No evaluation method, including those used by the Information Providers, may consistently generate evaluations or estimates that correspond to actual "traded" prices of any relevant securities or other assets. Evaluations are subject to change at any time without notice and without any duty to update or inform you, may not reflect prices at which actual transactions or collateral calls may occur or have occurred. The market price of securities, financial instruments, and other assets can be determined only if and when executed in the market. There may be no, or may not have been any, secondary trading market for the relevant securities, financial instruments or other assets. Private capital, equity, credit and other assets and their prices may be assessed infrequently, may not be priced on a secondary market, and shall not be relied upon as an explicit or implicit valuation of a particular instrument. Any reliance on fair value estimates and non-market inputs introduces potential biases and subjectivity. Internal Rate of Return metrics are not fully representative without full disclosure of fund cash flows, assumptions, and time horizons.

The Information does not constitute, and must not be relied upon as, investment advice, credit ratings, or proxy advisory or voting services. None of the Information Providers, their products or services, are fiduciaries or make any recommendation, endorsement, or approval of any investment decision or asset allocation. Likewise, the Information does not represent an offer to sell, a solicitation to buy, or an endorsement of any security, financial product, instrument, investment vehicle, or trading strategy, whether or not linked to or in any way based on any MSCI index, rating, subcomponent, or other Information (collectively, "Linked Investments"). The Information should not be relied on and is not a substitute for the skill, judgment and experience of any user when making investment and other business decisions. MSCI is not responsible for any user's compliance with applicable laws and regulations. All Information is impersonal, not tailored to the needs of any person, entity or group of persons, not objectively verifiable in every respect, and may not be based on information that is important to any user.

It is not possible to invest in an index. Exposure to an asset class or trading strategy or other category represented by an index is only available through third party investable instruments (if any) based on that index. MSCI makes no assurance that any Linked Investments will accurately track index performance or provide positive investment returns. Index returns do not represent results of actual trading of investible assets/securities. MSCI maintains and calculates indexes but does not manage assets. The calculation of indexes and index returns may deviate from the stated methodology. Index returns do not reflect payment of any sales charges or fees an investor may pay to purchase securities underlying the index or Linked Investments. The imposition of these fees and charges would cause the performance of a Linked Investment to be different than the MSCI index performance.

Information provided by MSCI Solutions LLC and certain related entities ("MSCI Solutions"), including materials utilized in MSCI sustainability and climate products, have not been submitted to, nor received approval from any regulatory body. MSCI sustainability and climate offerings, research and data are produced by, and ratings are solely the opinion of MSCI Solutions. MSCI India Domestic ESG Ratings are produced by MSCI ESG Ratings and Research Private Limited and offered domestically in India. Other MSCI products and services may utilize information from MSCI Solutions, Barra LLC or other affiliates. More information can be found in the relevant methodologies on www.msci.com. MSCI Indexes are administered by MSCI Limited (UK) and MSCI Deutschland GmbH. No regulated use of any MSCI private real assets indexes in any jurisdiction is permitted without MSCI's express written authorization. The process for applying for MSCI's express written authorization can be found at: <https://www.msci.com/index-regulation>.

MSCI receives compensation in connection with licensing its indexes and other Information to third parties. MSCI Inc.'s revenue includes fees based on assets in Linked Investments. Information can be found in MSCI Inc.'s company filings on the Investor Relations section of msci.com. Issuers mentioned in MSCI Solutions materials or their affiliates may purchase research or other products or services from one or more MSCI affiliates, manage financial products such as mutual funds or ETFs rated by MSCI Solutions or its affiliates or are based on MSCI Indexes. Constituents of MSCI equity indexes are listed companies, which are included in or excluded from the indexes according to the application of the relevant index methodologies. Constituents in MSCI Inc. equity indexes may include MSCI Inc., clients of MSCI or suppliers to MSCI. MSCI Solutions has taken steps to mitigate potential conflicts of interest and safeguard the integrity and independence of its research and ratings.

MIFID2/MIFIR notice: MSCI Solutions does not distribute or act as an intermediary for financial instruments or structured deposits, nor does it deal on its own account, provide execution services for others or manage client accounts. No MSCI product or service supports, promotes or is intended to support or promote any such activity. MSCI Solutions is an independent provider of sustainability and climate data. All use of indicative prices for carbon credits must comply with any rules specified by MSCI. All transactions in carbon credits must be traded "over-the-counter" (i.e. not on a regulated market, trading venue or platform that performs a similar function to a trading venue) and result in physical delivery of the carbon credits.

You may not remove, alter, or obscure any attribution to MSCI or notices or disclaimers that apply to the Information. MSCI, Barra, RiskMetrics, and other MSCI brands and product names are the trademarks, service marks, or registered trademarks of MSCI or its subsidiaries in the United States and other jurisdictions. The Global Industry Classification Standard (GICS) was developed by and is the exclusive property of MSCI and S&P Dow Jones Indices. "Global Industry Classification Standard (GICS)" is a service mark of MSCI and S&P Dow Jones Indices. Terms such as including, includes, for example, such as and similar terms used herein are without limitation.

MSCI and its Information Providers may use automated technologies and artificial intelligence to help generate content and output incorporated in the Information.

Privacy notice: For information about how MSCI collects and uses personal data, please refer to our Privacy Notice at: <https://www.msci.com/privacy-pledge>. For copyright infringement claims contact us at dmca@msci.com. This notice is governed by the laws of the State of New York without regard to conflict of laws principles.