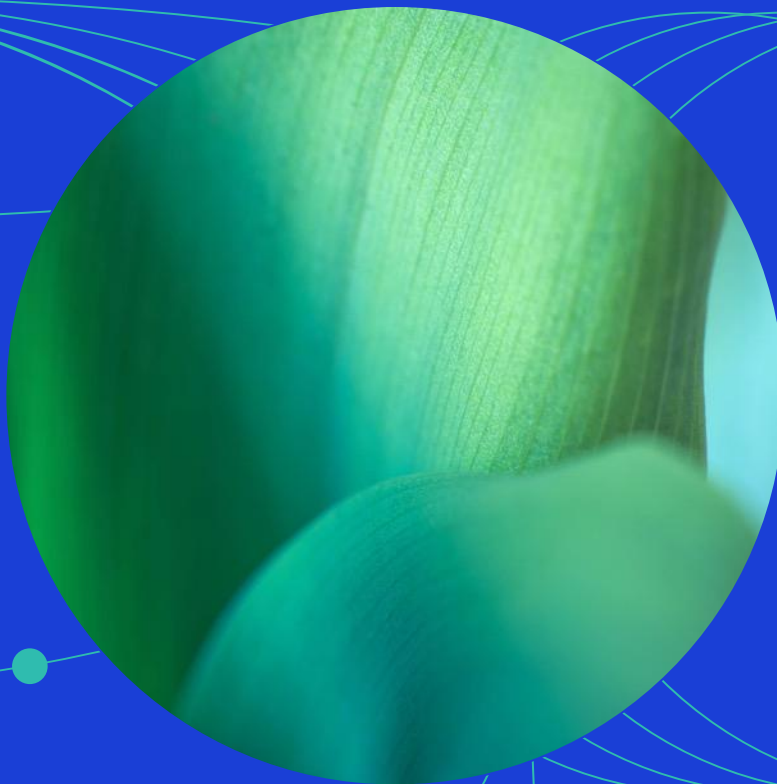




May 2026

MSCI Value Advanced Select Indexes Methodology



Contents

1	Introduction	4
2	Constructing the Indexes	5
2.1	Defining the Parent Index	5
2.2	Eligible Universe	5
2.3	Defining the Exclusion Criteria	5
2.3.1	Controversy-Based Exclusion Criteria	5
2.3.2	Business Exclusion Criteria	5
2.4	Defining the Security Level Carbon Exposure.....	6
2.4.1	Greenhouse Gas Emissions.....	6
2.5	Defining the Optimization Setup	6
2.5.1	Calculation of the Value Score.....	6
2.5.2	Optimization Constraints	6
2.6	Determining the Optimized Index	8
2.7	Treatment of Unrated Companies	8
3	Maintaining the Indexes	9
3.1	Semi-Annual Index Reviews.....	9
3.2	Monthly Review of Controversies.....	9
3.3	Ongoing Event Related Changes	9
4	MSCI Solutions	11
4.1	MSCI ESG Ratings	11
4.2	MSCI Controversies	11
4.3	MSCI Business Involvement Screening Research	11
4.4	MSCI Climate Change Metrics	11
4.4.1	Fossil Fuels and Power Generation Metrics	12
4.4.2	Greenhouse Gas (GHG) Emissions.....	12
4.5	MSCI Impact Solutions: Sustainable Impact metrics	12
	Appendix I: The Parent Index and the Base Currency for Optimization	14

Appendix II: Business Exclusion Criteria 15

Appendix III: Handling Infeasible Optimizations 17

Appendix IV: New Release of Barra® Equity Model or Barra® Optimizer..... 18

Appendix V: Company-Level Sustainable Exposure and Calculation of Index SE% ... 19

Appendix VI: Minimum Index SE% 20

Appendix VII: Calculation of Carbon Exposure Metrics..... 21

Appendix VIII: Methodology Set.....22

Appendix IX: Changes to this Document 23

1 Introduction

The MSCI Value Advanced Select Indexes (the 'Indexes')¹ are designed to represent the performance of a strategy that seeks systematic integration of environmental, social and governance (ESG) norms and maximizes its exposure to the Value factor.

The Indexes are constructed by selecting constituents of a market capitalization weighted index (the 'Parent Index') and applying an optimization process that aims to:

- Maximize exposure to the Value factor.
- Reduce GHG Intensity by 21% relative to its respective Parent Index.
- Improve the weighted-average industry-adjusted ESG score of the Index with respect to its respective Parent Index.
- Minimize the ex-ante tracking error relative to its respective Parent Index.
- Ensure that the index-level sustainable exposure (which reflects a particular interpretation of the company-level sustainable investment assessment as per Article 2(17) of the Sustainable Finance Disclosure Regulation (SFDR) along with an associated aggregation method) meets the relevant index-level sustainable exposure percentage ("Index SE%") thresholds. The minimum thresholds vary depending on the respective Parent Index and are listed in Appendix VI.

¹ The Indexes are governed by a set of methodology and policy documents ("Methodology Set"), including the present index methodology document. Please refer to Appendix VIII for more details.

2 Constructing the Indexes

The Indexes use company ratings and research provided by MSCI Solutions LLC (“MSCI Solutions”)² for the index construction.

Constructing the Indexes involves the following steps:

- Defining the Parent Index
- Defining the exclusion criteria
- Defining the security level carbon exposure
- Defining the optimization setup
- Determining the optimized index
- Defining the business exclusion criteria

The steps mentioned above are defined in detail in the subsequent sections.

2.1 Defining the Parent Index

Construction of the Indexes begins with identifying the Parent Index and the Eligible Universe for optimization. The Parent Index serves as the universe of eligible securities for optimization. A list of the Indexes and their respective Parent Indexes is provided in Appendix I.

2.2 Eligible Universe

The Eligible Universe is constructed by excluding securities from the Parent Index based on the exclusion criteria described below.

2.3 Defining the Exclusion Criteria

2.3.1 Controversy-Based Exclusion Criteria

Securities of companies assessed as having involvement in controversies that are classified as Red Flags (MSCI Controversies Score of 0) are excluded. A Red Flag indicates an ongoing Very Severe controversy implicating a company directly through its actions, products, or operations.

2.3.2 Business Exclusion Criteria

Companies that are involved in specific businesses which have high potential for negative social and/or environmental impact are ineligible for inclusion in the Indexes. Please refer to Appendix II for details on these criteria

- Controversial Weapons

² See Section 4 for further information regarding sustainability and climate data used in the Indexes that MSCI Limited and MSCI Deutschland GmbH source from MSCI Solutions LLC (“MSCI Solutions”), a separate subsidiary of MSCI Inc. MSCI Solutions is solely responsible for the creation, determination and management of such data as a provider to MSCI Limited and MSCI Deutschland GmbH. MSCI Limited and MSCI Deutschland GmbH are the benchmark administrators for the MSCI indexes.

- Nuclear Weapons
- Civilian Firearms
- Tobacco
- Thermal Coal
- Oil Sands

In addition to the above, companies that fail to comply with the United Nations Global Compact Principles (UN Global Compact Alignment value of "Fail") are also excluded from the Indexes. Please refer to Appendix II for more details on these criteria.

2.4 Defining the Security Level Carbon Exposure

The security level carbon exposure is measured in terms of its greenhouse gas emissions. The Indexes use MSCI Climate Change Metrics data from MSCI Solutions.

2.4.1 Greenhouse Gas Emissions

MSCI Solutions collects company-specific direct (Scope 1) and indirect (Scope 2) greenhouse gas (GHG) emissions data from company public documents and/or the Carbon Disclosure Project. If a company does not report GHG emissions, then MSCI Solutions uses its proprietary methodology to estimate Scope 1 and Scope 2 GHG emissions.

For newly added companies to the Index which do not report emission data and where MSCI Solutions has not yet estimated the greenhouse gas emissions, MSCI uses the average emissions per dollar of issuer market capitalization for the companies in the same industry group, multiplied by the market capitalization of the company as the estimated emission for the company.

2.5 Defining the Optimization Setup

The optimization objective is to maximize the Value score, while controlling the ex-ante Tracking Error relative to the Parent Index at the time of rebalancing.

The optimization is performed from a base currency perspective and does not allow short selling of securities. The default currency is the US Dollar.

Please refer to Appendix I for more details.

2.5.1 Calculation of the Value Score

The winsorized Value z-score score for each security is calculated using the formulae defined in Section 2.2 of the MSCI Enhanced Value Indexes Methodology (for details about the methodology, please refer to: <https://www.msci.com/index-methodology>).

2.5.2 Optimization Constraints

At each Semi-Annual Index Review, the following optimization constraints are employed, which aim to ensure replicability and investability:

- The ex-ante Tracking Error of the Index, relative to the Parent Index will be capped at 5%
- The maximum weight of an Index constituent will be restricted to the lower of (the weight of the security in the Parent Index + 2%) and 10 times the weight of the security in the Parent Index. The minimum weight of an index constituent will be restricted to be the higher of the (weight of the security in the Parent Index - 2%) and 0.05%
- The minimum number of index constituents will be 100
- For countries with weight greater than 2.5% in a composite Parent Index, the weight in the Index will not deviate more than +/-5% from the country weight in the Parent Index
- For countries with weight less than 2.5% in a composite Parent Index, the weight in the Index will be capped at 3 times their weight in the Parent Index
- The above country weight constraint will also apply on China A Stock Connect listings as a group separately in addition to the usual country weight constraint on China
- The sector weights of the Index will not deviate more than +/-5% from the sector weights of the Parent Index
- The minimum weighted-average industry-adjusted ESG score of the Index at the time of rebalancing will be higher of the following:
 - 110% of the weighted-average industry-adjusted ESG score of the Parent Index and
 - The ESG Score of the Index by removing at least bottom 10% of the Parent Index by lowest ESG score
- The minimum reduction in the Weighted Average Carbon Emission Intensity³ relative to the Parent Index will be 21%
- The constraint on minimum Index SE% (which reflects a particular interpretation of the company-level sustainable investment assessment as per Article 2(17) of the Sustainable Finance Disclosure Regulation (SFDR)⁴³ along with an associated aggregation method) for the Index is defined in Appendix VI.
- The one-way turnover of the Index is constrained to a maximum of 20% at each Index Review.

Please refer to Appendix V for the criteria used to determine the company-level sustainable exposure qualification and the calculation of Index SE%.

The Weighted Average Carbon Intensity is calculated using the formulae defined in Appendix VII.

³ Carbon Intensity = Scope 1 & 2 Emission / Sales.

⁴ Regulation (EU) 2019/2088 of the European Parliament and of the Council of 27 November 2019 on sustainability-related disclosures in the financial services sector, available at: <https://eur-lex.europa.eu/legalcontent/EN/TXT/PDF/?uri=CELEX:32019R2088&from=EN>

2.6 Determining the Optimized Index

The Indexes are constructed using the Barra Open Optimizer in combination with the relevant Barra Equity Model⁵. The optimization uses the Eligible Universe as the universe of eligible securities and the specified optimization objective and constraints to determine the Index. Infeasible optimizations are handled as explained in Appendix III.

2.7 Treatment of Unrated Companies

Companies not assessed by MSCI Solutions on data for any of the following MSCI sustainability and climate products are not eligible for inclusion in the Indexes.

- MSCI ESG Ratings
- MSCI Controversies
- MSCI Climate Change Metrics
- MSCI Business Involvement Screening Research (BISR)

For the treatment of unrated companies in the calculation of target metrics for the optimization process, please refer to Appendix VII

⁵ Please refer to Appendix IV for the detailed information on model usage

3 Maintaining the Indexes

3.1 Semi-Annual Index Reviews

The Indexes are subject to a semi-annual review usually as of the close of the last business day of May and November, coinciding with the May and November Index Reviews of the MSCI Global Investable Market Indexes. Fundamental variables and Barra Equity Model data as of the end of April and October are used respectively.

In general, MSCI uses MSCI Solutions data⁶ (including MSCI ESG Ratings, MSCI Controversies Scores, MSCI Business Involvement Screening Research, MSCI Impact Solutions and MSCI Climate-change metrics) as of the end of the month preceding the Index Reviews for the rebalancing of the Index. For some securities, such data may not be published by MSCI Solutions by the end of the month preceding the Index Review. For such securities, MSCI will use data published after the end of month, when available, for the rebalancing of the Index.

The pro forma Indexes are in general announced nine business days before the effective date.

3.2 Monthly Review of Controversies

Index constituents are reviewed on a monthly basis for the involvement in controversies and for compliance with the United Nations Global Compact Principles. Existing constituents will be deleted if they face controversies as defined by MSCI Controversies Score of 0 ('Red Flag' companies), or if they fail to comply with the UN Global Compact Principles (UN Global Compact Alignment value of "Fail").

MSCI uses MSCI Controversies data as of the end of the month preceding the review (e.g., end of June data for the end of July monthly review). For some securities, such data may not be published by MSCI Solutions by the end of the month preceding the review. For such securities, MSCI will use data published after the end of month, when available, for the monthly review of the Index.

The pro forma indexes are generally announced nine business days before the first business day of the month

3.3 Ongoing Event Related Changes

The general treatment of corporate events in the Indexes aims to minimize turnover outside of Index Reviews. The methodology aims to appropriately represent an investor's participation in an event based on relevant deal terms and pre-event weighting of the index constituents that are involved. Further, changes in index market capitalization that occur as a result of corporate event implementation will be offset by a corresponding change in the Variable Weighting Factor (VWF) of the constituent.

⁶ See section 4 for details of data sourced from MSCI Solutions used in the Indexes

The following section briefly describes the treatment of common corporate events within the Indexes. No new securities will be added (except where noted below) to the Index between Index Reviews. Parent Index deletions will be reflected simultaneously in the Index.

Event Type	Event Details
New additions to the Parent Index	A new security added to the Parent Index (such as IPO and other early inclusions) will not be added to the index.
Spin-Offs	All securities created as a result of the spin-off of an existing Index constituent will be added to the Index at the time of event implementation. Reevaluation for continued inclusion in the Index will occur at the subsequent Index Review.
Merger/Acquisition	For Mergers and Acquisitions, the acquirer’s post event weight will account for the proportionate amount of shares involved in deal consideration, while cash proceeds will be invested across the Index. If an existing Index constituent is acquired by a non-Index constituent, the existing constituent will be deleted from the Index and the acquiring non-constituent will not be added to the Index.
Changes in Security Characteristics	A security will continue to be an Index constituent if there are changes in characteristics (country, sector, size segment, etc.) Reevaluation for continued inclusion in the Index will occur at the subsequent Index Review.

Further detail and illustration regarding specific treatment of corporate events relevant to this Index can be found in the MSCI Corporate Events Methodology book under the sections detailing the treatment of events in Capped Weighted and Non-Market Capitalization Weighted indexes.

The MSCI Corporate Events methodology book is available at:
<https://www.msci.com/index/methodology/latest/CE>.

4 MSCI Solutions

The Indexes are products of MSCI Inc. that utilize information such as company ratings and research produced and provided by MSCI Solutions LLC (“MSCI Solutions”), a subsidiary of MSCI Inc. In particular, the Indexes use the following MSCI sustainability and climate products: MSCI ESG Ratings, MSCI Controversies, MSCI Business Involvement Screening Research, MSCI Climate Change Metrics, and MSCI Impact Solutions. MSCI Indexes are administered by MSCI Limited and MSCI Deutschland GmbH.

4.1 MSCI ESG Ratings

MSCI ESG Ratings aim to measure entities’ management of environmental, social and governance risks and opportunities. MSCI ESG Ratings use a weighted average key issue calculation that is normalized by industry to arrive at an industry-adjusted ESG score (0-10), which is then translated to a seven-point scale from ‘AAA’ to ‘CCC’, indicating how an entity manages relevant key issues relative to industry peers.

The MSCI ESG Ratings methodology can be found at:

<https://www.msci.com/legal/sustainability-and-climate-resources-and-disclosures>.

4.2 MSCI Controversies

MSCI Controversies provide assessments of controversies concerning the potential negative environmental, social, and/or governance impact of company operations, products and services. The evaluation framework used in MSCI Controversies is designed to be consistent with international norms represented by the UN Declaration of Human Rights, the ILO Declaration on Fundamental Principles and Rights at Work, and the UN Global Compact. MSCI Controversies Score falls on a 0-10 scale, with “0” being the most severe controversy.

The MSCI Controversies methodology can be found at:

<https://www.msci.com/legal/sustainability-and-climate-resources-and-disclosures>.

4.3 MSCI Business Involvement Screening Research

MSCI Business Involvement Screening Research (BISR) aims to enable institutional investors to manage environmental, social and governance (ESG) standards and restrictions reliably and efficiently.

The MSCI Business Involvement Screening Research methodology can be found at:

<https://www.msci.com/legal/sustainability-and-climate-resources-and-disclosures>.

4.4 MSCI Climate Change Metrics

MSCI Climate Change Metrics provide climate data & tools to support institutional investors seeking to integrate climate risk & opportunities into their investment strategy and processes. This includes investors seeking to achieve a range of objectives, including measuring and reporting on climate risk

exposure, implementing low carbon and fossil fuel-free strategies, alignment with temperature pathways and factoring climate change research into their risk management processes, in particular through climate scenario analysis for both transition and physical risks.

For more details on MSCI Climate Change Metrics, please refer to:

<https://www.msci.com/legal/sustainability-and-climate-resources-and-disclosures>.

4.4.1 Fossil Fuels and Power Generation Metrics

MSCI Solutions identifies companies involved in fossil fuel-related assets and activities including fossil fuel reserves, resource extraction, power generation and generation capacity, revenue from such assets and activities and capital investments in such assets and activities. The metrics are based on disclosed activities, disclosed revenue and estimates of revenue that are extrapolated from company disclosures and eligible third-party sources (such as NGOs).

4.4.2 Greenhouse Gas (GHG) Emissions

MSCI Solutions collects reported emissions and uses proprietary estimation methodologies that follows the GHG Protocol in including carbon dioxide (CO₂) and the five other principal GHGs: hydrofluorocarbons (HFCs), methane (CH₄), nitrous oxide (N₂O), perfluorocarbons (PFCs), and sulfur hexafluoride (SF₆). Emissions of these other gases are accounted for in terms of the quantity of CO₂ that has an equivalent global warming potential.

4.5 MSCI Impact Solutions: Sustainable Impact metrics

MSCI Impact Solutions' Sustainable Impact Metrics is designed to identify companies that derive revenue from products or services with positive impact on society and the environment. The Sustainable Impact Metrics are comprised of six Environmental Impact categories and seven Social Impact categories arranged by theme.

MSCI Sustainable Impact Taxonomy

Pillar	Themes	Categories
Environmental Impact	Climate Change	<ol style="list-style-type: none"> 1. Alternative energy 2. Energy efficiency 3. Green building
	Natural capital	<ol style="list-style-type: none"> 4. Sustainable water 5. Pollution prevention 6. Sustainable agriculture
Social Impact	Basic needs	<ol style="list-style-type: none"> 7. Nutrition 8. Major Disease Treatment 9. Sanitation 10. Affordable Real Estate
	Empowerment	<ol style="list-style-type: none"> 11. SME Finance 12. Education 13. Connectivity – Digital divide

Under each of the actionable environmental and social impact themes, MSCI Solutions has identified specific categories of products and services that it has determined companies can offer as potential solutions to environmental and social challenges.

For more details on MSCI Sustainable Impact Metrics, please refer to <https://www.msci.com/legal/sustainability-and-climate-resources-and-disclosures>.

Appendix I: The Parent Index and the Base Currency for Optimization

MSCI Value Advanced Select Index	Parent Index	Base Currency for Optimization
MSCI USA Value Advanced Select Index	MSCI USA Index	USD
MSCI World Value Advanced Select Index	MSCI World Index	USD

Appendix II: Business Exclusion Criteria

MSCI Solutions has developed a framework designed to define significant involvement in controversial activities. According to this framework, there are three tolerance levels: Zero Tolerance, Minimal Tolerance and Low Tolerance.

Each controversial activity screened by the Indexes (except Thermal Coal, Oil Sands and Global Norms) is assigned to one of these tolerance levels:

Activities classified under “Zero Tolerance”

- **Controversial Weapons**

- All companies with any tie to Controversial Weapons (cluster munitions, landmines, depleted uranium weapons, biological/chemical weapons, blinding lasers, non-detectable fragments and incendiary weapons), as defined by the methodology of the MSCI Ex-Controversial Weapons Indexes available at <https://www.msci.com/index/methodology/latest/XCW>.

Activities classified under “Minimal Tolerance”

- **Nuclear Weapons**

- All companies that manufacture nuclear warheads and/or whole nuclear missiles.
- All companies that manufacture components that were developed or are significantly modified for exclusive use in nuclear weapons (warheads and missiles).
- All companies that manufacture or assemble delivery platforms that were developed or significantly modified for the exclusive delivery of nuclear weapons.
- All companies that provide auxiliary services related to nuclear weapons.
- All companies that manufacture components that were not developed or not significantly modified for exclusive use in nuclear weapons (warheads and missiles).
- All companies that manufacture or assemble delivery platforms that were not developed or not significantly modified for the exclusive delivery of nuclear weapons.
- All companies that manufacture components for nuclear-exclusive delivery platforms.

- **Civilian Firearms**

- All companies classified as “Producer” of firearms and small arms ammunitions for civilian markets. It does not include companies that cater to the military, government, and law enforcement markets.
- All companies deriving 5% or more revenue from the distribution (wholesale or retail) of firearms or small arms ammunition intended for civilian use.

- **Tobacco**

- All companies classified as a “Producer”.
- All companies deriving 5% or more aggregate revenue from the production, distribution, retail and supply of tobacco-related products.

Activities not classified under any specific tolerance level

- **Thermal Coal**
 - All companies deriving 5% or more revenue (either reported or estimated) from the mining of thermal coal (including lignite, bituminous, anthracite and steam coal) and its sale to external parties. It excludes: revenue from metallurgical coal; coal mined for internal power generation (e.g. in the case of vertically integrated power producers); intra-company sales of mined thermal coal; and revenue from coal trading.
 - All companies deriving 5% or more revenue (either reported or estimated) from the thermal coal based power generation.
- **Oil Sands**
 - All companies deriving 5% or more revenue from oil sands extraction, which own oil sands reserves and disclose evidence of deriving revenue from oil sands extraction. Companies that derive revenue from nonextraction activities (e.g. exploration, surveying, processing, refining) or intra-company sales are not excluded. Additionally, companies that own oil sands reserves with no associated revenue are also not excluded.
- **Global Norms - United Nations Global Compact Compliance**
 - Failure to comply with the United Nations Global Compact Principles (UN Global Compact Alignment value of "Fail").

Appendix III: Handling Infeasible Optimizations

During the Semi-Annual Index Review, in the event that there is no optimal solution that satisfies all the optimization constraints defined in Section 2.5, the following constraints are relaxed, until an optimal solution is found:

- Relax the maximum weight multiple in steps of 2 up to a maximum of 5 iterations (up to a maximum of 20 times the weight of the security in the Parent Index)
- Relax the turnover constraint in steps of 2%, up to a maximum of 30%
- The maximum active weight multiple constraint and the maximum turnover constraint are alternately relaxed until a feasible solution is achieved. For example, constraints relaxation is executed in the sequence as illustrated below:

Order of Relaxation	Maximum Asset Weight Multiple	Turnover Limit
1	12 times the weight of the security in the Parent Index	20%
2	12 times the weight of the security in the Parent Index	22%
3	14 times the weight of the security in the Parent Index	22%
4	14 times the weight of the security in the Parent Index	24%

In the event that no optimal solution is found after the above constraints have been relaxed and if the ESG Score constraint is set at 110% of the Parent Index ESG Score, the ESG score⁷ is relaxed from 110% of the weighted-average industry- adjusted ESG score of the Parent Index down to a minimum value equivalent to the ESG score of the Index by removing at least bottom 10% of the Parent Index by lowest ESG score in 5 equal steps.

In the event that no optimal solution is found after all the above constraints have been relaxed, the Index will not be rebalanced for that Semi-Annual Index Review.

⁷ Weighted-average industry-adjusted ESG score of the Index

Appendix IV: New Release of Barra® Equity Model or Barra® Optimizer

The methodology presently uses MSCI Barra Global Equity Model for Long-Term Investors (“GEMTL”) for the optimization. A new release of the relevant Barra Equity Model or Barra Optimizer may replace the former version within a suitable timeframe.

Appendix V: Company-Level Sustainable Exposure and Calculation of Index SE%

A company qualifies as having company-level sustainable exposure if it meets all the following conditions

1. MSCI ESG Rating of "BB" or above⁸
2. MSCI Controversies Score of 2 or above⁹
3. At least one of the following conditions is met:
 - a. Derives 20% or more aggregate revenue from any of the thirteen social and environmental impact categories of Sustainable Impact Metrics (including nutrition, sanitation, major diseases treatment, SME finance, education, connectivity, affordable real estate, alternative energy, energy efficiency, green building, pollution prevention, sustainable agriculture and sustainable water).
 - b. Has one or more active carbon emissions reduction target(s) approved by the Science Based Targets initiative (SBTi).
4. Not flagged by the following business involvement criteria:
 - a. Has any tie to Controversial Weapons (cluster munitions, landmines, depleted uranium weapons, biological/chemical weapons, blinding lasers, non-detectable fragments and incendiary weapons), in line with the methodology of the MSCI Ex-Controversial Weapons Indexes available at <https://www.msci.com/index/methodology/latest/XCW>.
 - b. Derives 1% or more revenue (either reported or estimated) from the mining of thermal coal (including lignite, bituminous, anthracite and steam coal) and its sale to external parties.
 - c. Manufactures tobacco products, such as cigars, blunts, cigarettes, ecigarettes, inhalers, beedis, kreteks, smokeless tobacco, snuff, snus, dissolvable and chewing tobacco.
 - d. Derives 5% or more aggregate revenue from the production, distribution, retail, supply and licensing of tobacco-related products

The index-level sustainable exposure is calculated as the sum of the weight of companies in the Index that qualify as having company-level sustainable exposure.

⁸ The condition is not met if the MSCI ESG Rating is missing for the company.

⁹ The condition is not met if the MSCI Controversies Score is missing for the company

Appendix VI: Minimum Index SE%

The following optimization constraints on minimum Index SE% are used for each Index.

No.	Index	Index SE% Threshold
1	MSCI USA Value Advanced Select Index	10%
2	MSCI World Value Advanced Select Index	15%

Appendix VII: Calculation of Carbon Exposure Metrics

Index Carbon Emissions –

For Parent Index constituents where the Scope 1+2 Emissions Intensity is not available, the average Scope 1+2 Emissions Intensity relative to Sales of all the constituents of the MSCI ACWI in the same GICS Industry Group in which the constituent belongs to is used.

Security Level GHG Intensity relative to Sales =

$$\frac{\text{Scope 1 + 2 Carbon Emission}}{\text{Sales (in M\$)}}$$

Missing Data Treatment

If Scope 1+2 carbon emissions and/or Sales are not available, the average Scope 1+2 intensity of all the constituents of the MSCI ACWI in the same GICS Industry Group in which the security belongs is used.

Weighted Average GHG Intensity relative to Sales of the Parent Index –

$$\sum_i (\text{Weight in Parent Index} * \text{Security Level GHG Intensity relative to Sales})$$

Weighted Average GHG Intensity relative to Sales of the Derived Index –

$$\sum_i (\text{Weight in Derived Index} * \text{Security Level GHG Intensity relative to Sales})$$

Appendix VIII: Methodology Set

The Indexes are governed by a set of methodology and policy documents (“Methodology Set”), including the present index methodology document as mentioned below:

- Description of methodology set – www.msci.com/index/methodology/latest/ReadMe
- MSCI Corporate Events Methodology – www.msci.com/index/methodology/latest/CE
- MSCI Fundamental Data Methodology – <https://www.msci.com/index/methodology/latest/FundData>
- MSCI Index Calculation Methodology – www.msci.com/index/methodology/latest/IndexCalc
- MSCI Index Glossary of Terms – www.msci.com/index/methodology/latest/IndexGlossary
- MSCI Index Policies – www.msci.com/index/methodology/latest/IndexPolicy
- MSCI Global Industry Classification Standard (GICS) Methodology – <https://www.msci.com/index/methodology/latest/GICS>
- MSCI Global Investable Market Indexes Methodology – www.msci.com/index/methodology/latest/GIMI
- MSCI Global ex Controversial Weapons Indexes Methodology – <https://www.msci.com/index/methodology/latest/XCW>
- MSCI Enhanced Value Indexes Methodology – <https://www.msci.com/index/methodology/latest/EV>
- ESG Factors In Methodology*

The Methodology Set for the Indexes can also be accessed from MSCI’s webpage <https://www.msci.com/index-methodology> in the section ‘Search Methodology by Index Name or Index Code’.

* ‘ESG Factors in Methodology’ contains the list of environmental, social, and governance factors considered, and how they are applied in the methodology (e.g., selection, weighting or exclusion). It can be accessed in the Methodology Set as described above.

Appendix IX: Changes to this Document

The following sections have been modified since May 2021:

- Appendix I: The Parent Index and the Base Currency for Optimization Addition of MSCI World Value ESG Reduced Carbon Target Select Index

The following sections have been modified since May 2022:

- Section 3.4.2: Optimization Constraints
Update to reflect the change in weighted-average industry-adjusted ESG score and Carbon Emission Intensity constraints
- Appendix III: Handling Infeasible Optimizations Update to reflect the change in weighted-average industry-adjusted ESG score constraint relaxation

The following sections have been modified since November 2022:

- Introduction: Updated to reflect the new requirement on index-level sustainable exposure
- Section 3.6.2: Optimization Constraints Update to reflect the addition of minimum index-level sustainable exposure (Index SE%) constraint
- Section 4.2: Monthly Review of Controversies Added to reflect the monthly exclusions of 'Red Flag Companies'
- Appendix V: Additional details of the calculation of index-level sustainable exposure
- Appendix VI: Added to reflect the optimization constraints on index-level sustainable exposure

The following sections have been modified since December 2022:

- Section 3.5.2 Optimization Constrains: Update to reference Appendix VII
- Appendix VII: Added to reference formulae used for Potential Emissions per dollar of market capitalization calculation.

The following sections have been modified since July 2023:

- Methodology book was updated to reflect the transition of the MSCI Global Investable Market Indexes (GIMI) to Quarterly Comprehensive Index Reviews.
- All references to "Semi-Annual Index Reviews" and "Quarterly Index Reviews" of the MSCI GIMI were replaced with "Index Reviews."
- Section 2.3.1: Clarified the exclusion criteria for companies involved in Controversies.
- Section 4: ESG Research
 - Moved that section after Section 3.
 - Updated the descriptions of MSCI sustainability and climate products.

The following sections have been modified as of February 2025

- The methodology and index names were updated, effective February 3rd; MSCI Value ESG Reduced Carbon Target Select Indexes will be renamed to MSCI Value Advanced Select Indexes.

Section 2.7: Treatment of Unrated Companies

- Moved treatment of companies when ratings and research is not available from MSCI Solutions to a new section.

Section 4.4: MSCI Climate Change Metrics.

- Added a sub-section under Climate Change Metrics to provide additional details on Fossil Fuels related activities and Greenhouse Gas Emissions.

Appendix VIII: Methodology Set

- Added details on the Methodology Set for the Indexes

The following section has been modified as of February 2026

Appendix VII: Calculation of Carbon Exposure Metrics

- The formula for the Security Level GHG Intensity relative to Sales has been corrected to remove reference to Scope 3 Emissions.

The following sections have been modified as of May 2026

Section 2.4: Defining the Security Level Carbon Exposure

- Removed the Potential Carbon Emissions from Fossil Fuels subsection

Section 2.5: Defining the Optimization Setup

- Updated the minimum weighted-average industry-adjusted ESG score
- Removed the minimum reduction of 30% relative to the Parent Index in Potential Emissions
- Modified the minimum reduction in Carbon Emission Intensity relative to the Parent Index from 30% to 21%.

Section 2.7: Treatment of Unrated Companies

- Added the treatment of companies when business involvement screening research and Climate Change Metrics are not available from MSCI Solutions

Appendix III: Handling Infeasible Optimizations

- Modified section to reflect the updated ESG Score constraint

Appendix VII: Calculation of Carbon Exposure Metrics.

- Added the treatment of companies when Climate Change Metrics is not available from MSCI Solutions

- Removed formula for Potential Emissions per dollar of market capitalization calculation.

Contact Us

About MSCI

MSCI is a leading provider of critical decision support tools and services for the global investment community. With over 50 years of expertise in research, data and technology, we power better investment decisions by enabling clients to understand and analyze key drivers of risk and return and confidently build more effective portfolios. We create industry-leading research-enhanced solutions that clients use to gain insight into and improve transparency across the investment process.

To learn more, please visit www.msci.com.

msci.com/contact-us

The process for submitting a formal index complaint can be found on the index regulation page of MSCI's website at: <https://www.msci.com/index-regulation>.

AMERICA

United States	+ 1 888 588 4567 *
Canada	+ 1 416 687 6270
Brazil	+ 55 11 4040 7830
Mexico	+ 52 81 1253 4020

EUROPE, MIDDLE EAST & AFRICA

South Africa	+ 27 21 673 0103
Germany	+ 49 69 133 859 00
Switzerland	+ 41 22 817 9777
United Kingdom	+ 44 20 7618 2222
Italy	+ 39 02 5849 0415
France	+ 33 17 6769 810

ASIA PACIFIC

China	+ 86 21 61326611
Hong Kong	+ 852 2844 9333
India	+ 91 22 6784 9160
Malaysia	1800818185 *
South Korea	+ 82 70 4769 4231
Singapore	+ 65 67011177
Australia	+ 612 9033 9333
Taiwan	008 0112 7513 *
Thailand	0018 0015 6207 7181 *
Japan	+ 81 3 4579 0333

* toll-free

Notice and Disclaimer

The data, data feeds, databases, reports, text, graphs, charts, images, videos, recordings, models, metrics, analytics, indexes, ratings, scores, cases, estimates, assessments, software, websites, products, services and other information and materials contained herein or delivered in connection with this notice (collectively, the "Information") are copyrighted, trade secrets (when not publicly available), trademarks and proprietary property of MSCI Inc. or its subsidiaries (collectively, "MSCI"), MSCI's licensors, direct or indirect suppliers and authorized sources, and/or any third party contributing to the Information (collectively, with MSCI, the "Information Providers"). All rights in the Information are reserved by MSCI and its Information Providers and user(s) shall not, nor assist others to, challenge or assert any rights in the Information.

Unless you contact MSCI and receive its prior written permission, you must NOT use the Information, directly or indirectly, in whole or in part (i) for commercial purposes, (ii) in a manner that competes with MSCI or impacts its ability to commercialize the Information or its services, (iii) to provide a service to a third party, (iv) to permit a third party to directly or indirectly access, use or resell the Information, (v) to redistribute or resell the Information in any form, (vi) to include the Information in any materials for public dissemination such as fund factsheets, market presentations, prospectuses, and investor information documents (e.g. KIDs or KIDS), (vii) to create or as a component of any financial products, whether listed or traded over the counter or on a private placement basis or otherwise, (viii) to create any indexes, ratings or other data products, including in derivative works combined with other indexes or data or as a policy, product or performance benchmarks for active, passive or other financial products, (ix) to populate a database, or (x) to train, use as an input to, or otherwise in connection with any artificial intelligence, machine learning, large language models or similar technologies except as licensed and expressly authorized under MSCI's AI Contracting Supplement at <https://www.msci.com/legal/supplemental-terms-for-client-use-of-artificial-intelligence>.

The intellectual property rights of MSCI and its Information Providers may not be misappropriated or used in a competitive manner through the use of third-party data or financial products linked to the Information, including by using an MSCI index-linked future or option in a competing third-party index to provide an exposure to the underlying MSCI index or by using an MSCI index-linked ETF to create a financial product that provides an exposure to the underlying MSCI index without obtaining a license from MSCI.

The user or recipient of the Information assumes the entire risk of any use it may make, permit or cause to be made of the Information. NONE OF THE INFORMATION PROVIDERS MAKES ANY EXPRESS OR IMPLIED WARRANTIES OR REPRESENTATIONS WITH RESPECT TO THE INFORMATION (OR THE RESULTS TO BE OBTAINED BY THE USE THEREOF), AND TO THE MAXIMUM EXTENT PERMITTED BY APPLICABLE LAW, EACH INFORMATION PROVIDER EXPRESSLY DISCLAIMS ALL IMPLIED WARRANTIES (INCLUDING ANY IMPLIED WARRANTIES OF ORIGINALITY, ACCURACY, TIMELINESS, SUITABILITY, NON-INFRINGEMENT, COMPLETENESS, MERCHANTABILITY AND FITNESS FOR A PARTICULAR PURPOSE) WITH RESPECT TO ANY OF THE INFORMATION. Without limiting any of the foregoing and to the maximum extent permitted by applicable law, in no event shall MSCI or any other Information Provider have any liability arising out of or relating to any of the Information, including for any direct, indirect, special, punitive, consequential (including lost profits) or any other damages, even if notified of the possibility of such damages. The foregoing shall not exclude or limit any liability that may not by applicable law be excluded or limited.

The Information, including index construction, ratings, historical data, or analysis, is not a prediction or guarantee of future performance, and must not be relied upon as such. Past performance is not indicative of future results. The Information may contain back tested data. Back-tested performance based on back-tested data is not actual performance but is hypothetical. There are frequently material differences between back tested performance results and actual results subsequently achieved by any investment strategy. The Information may include "Signals," defined as quantitative attributes or the product of methods or formulas that describe or are derived from calculations using historical data. Signals are inherently backward-looking because of their use of historical data, and they are inherently inaccurate, not intended to predict the future and must not be relied upon as such. The relevance, correlations and accuracy of Signals frequently change materially over time.

The Information may include data relating to indicative prices, evaluated pricing or other information based on estimates or evaluations (collectively, "Evaluations") that are not current and do not reflect real-time traded prices. No evaluation method, including those used by the Information Providers, may consistently generate evaluations or estimates that correspond to actual "traded" prices of any relevant securities or other assets. Evaluations are subject to change at any time without notice and without any duty to update or inform you, may not reflect prices at which actual transactions or collateral calls may occur or have occurred. The market price of securities, financial instruments, and other assets can be determined only if and when executed in the market. There may be no, or may not have been any, secondary trading market for the relevant securities, financial instruments or other assets. Private capital, equity, credit and other assets and their prices may be assessed infrequently, may not be priced on a secondary market, and shall not be relied upon as an explicit or implicit valuation of a particular instrument. Any reliance on fair value estimates and non-market inputs introduces potential biases and subjectivity. Internal Rate of Return metrics are not fully representative without full disclosure of fund cash flows, assumptions, and time horizons.

The Information does not constitute, and must not be relied upon as, investment advice, credit ratings, or proxy advisory or voting services. None of the Information Providers, their products or services, are fiduciaries or make any recommendation, endorsement, or approval of any investment decision or asset allocation. Likewise, the Information does not represent an offer to sell, a solicitation to buy, or an endorsement of any security, financial product, instrument, investment vehicle, or trading strategy, whether or not linked to or in any way based on any MSCI index, rating, subcomponent, or other Information (collectively, "Linked Investments"). The Information should not be relied on and is not a substitute for the skill, judgment and experience of any user when making investment and other business decisions. MSCI is not responsible for any user's compliance with applicable laws and regulations. All Information is impersonal, not tailored to the needs of any person, entity or group of persons, not objectively verifiable in every respect, and may not be based on information that is important to any user.

It is not possible to invest in an index. Exposure to an asset class or trading strategy or other category represented by an index is only available through third party investable instruments (if any) based on that index. MSCI makes no assurance that any Linked Investments will accurately track index performance or provide positive investment returns. Index returns do not represent results of actual trading of investable assets/securities. MSCI maintains and calculates indexes but does not manage assets. The calculation of indexes and index returns may deviate from the stated methodology. Index returns do not reflect payment of any sales charges or fees an investor may pay to purchase securities underlying the index or Linked Investments. The imposition of these fees and charges would cause the performance of a Linked Investment to be different than the MSCI index performance.

Information provided by MSCI Solutions LLC and certain related entities ("MSCI Solutions"), including materials utilized in MSCI sustainability and climate products, have not been submitted to, nor received approval from any regulatory body. MSCI sustainability and climate offerings, research and data are produced by, and ratings are solely the opinion of MSCI Solutions. Other MSCI products and services may utilize information from MSCI Solutions, Barra LLC or other affiliates. More information can be found in the relevant methodologies on www.msci.com. MSCI Indexes are administered by MSCI Limited (UK) and MSCI Deutschland GmbH. No regulated use of any MSCI private real assets indexes in any jurisdiction is permitted without MSCI's express written authorization. The process for applying for MSCI's express written authorization can be found at: <https://www.msci.com/index-regulation>.

MSCI receives compensation in connection with licensing its indexes and other Information to third parties. MSCI Inc.'s revenue includes fees based on assets in Linked Investments. Information can be found in MSCI Inc.'s company filings on the Investor Relations section of msci.com. Issuers mentioned in MSCI Solutions materials or their affiliates may purchase research or other products or services from one or more MSCI affiliates, manage financial products such as mutual funds or ETFs rated by MSCI Solutions or its affiliates or are based on MSCI Indexes. Constituents of MSCI equity indexes are listed companies, which are included in or excluded from the indexes according to the application of the relevant index methodologies. Constituents in MSCI Inc. equity indexes may include MSCI Inc., clients of MSCI or suppliers to MSCI. MSCI Solutions has taken steps to mitigate potential conflicts of interest and safeguard the integrity and independence of its research and ratings.

MIFID2/MIFIR notice: MSCI Solutions does not distribute or act as an intermediary for financial instruments or structured deposits, nor does it deal on its own account, provide execution services for others or manage client accounts. No MSCI product or service supports, promotes or is intended to support or promote any such activity. MSCI Solutions is an independent provider of sustainability and climate data. All use of indicative prices for carbon credits must comply with any rules specified by MSCI. All transactions in carbon credits must be traded "over-the-counter" (i.e. not on a regulated market, trading venue or platform that performs a similar function to a trading venue) and result in physical delivery of the carbon credits.

You may not remove, alter, or obscure any attribution to MSCI or notices or disclaimers that apply to the Information. MSCI, Barra, RiskMetrics, and other MSCI brands and product names are the trademarks, service marks, or registered trademarks of MSCI or its subsidiaries in the United States and other jurisdictions. The Global Industry Classification Standard (GICS) was developed by and is the exclusive property of MSCI and S&P Dow Jones Indices. "Global Industry Classification Standard (GICS)" is a service mark of MSCI and S&P Dow Jones Indices. Terms such as including, includes, for example, such as and similar terms used herein are without limitation.

MSCI and its Information Providers may use automated technologies and artificial intelligence to help generate content and output incorporated in the Information.

Privacy notice: For information about how MSCI collects and uses personal data, please refer to our Privacy Notice at: <https://www.msci.com/privacy-pledge>. For copyright infringement claims contact us at dmca@msci.com. This notice is governed by the laws of the State of New York without regard to conflict of laws principles.